

Adding a Bosco backend to HTCondor-CE

Dr. Derek Weitzel
University of Nebraska - Lincoln

Motivation

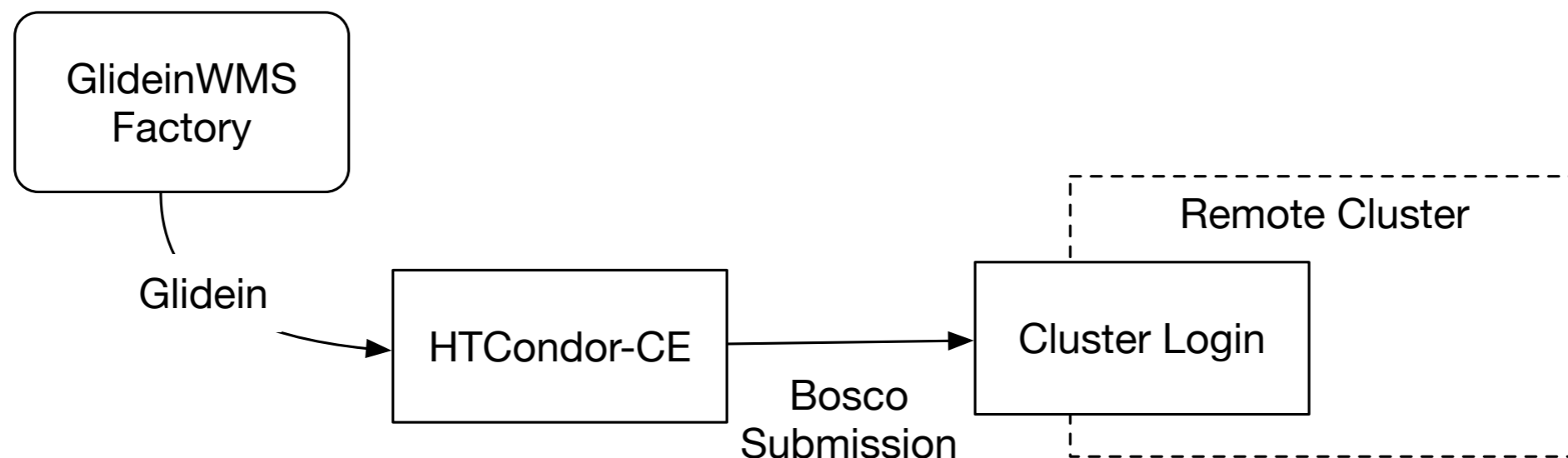
- Sites want an easy on-ramp to the OSG but the OSG full-stack can be daunting!
- However, most sites:
 - Can allow SSH pubkey-based auth.
 - Can easily add user accounts.
- Idea behind BOSCO: Utilize SSH as a gateway.

Motivation

- BOSCO has been used for awhile by the OSG-Connect team. However,
 - Operational effort for this team — effort spent here means they can't spend it elsewhere.
 - Accounting information doesn't show up correctly in Gratia.
 - Results in a slightly different pilot environment.

Our Proposal

- Create a new backend to the standard HTCondor-CE.
- Glideins submitted to this HTCondor-CE are routed to a remote job submission through Bosco
- Transparent to the users, glideins will come from GlideinWMS factories



Installation

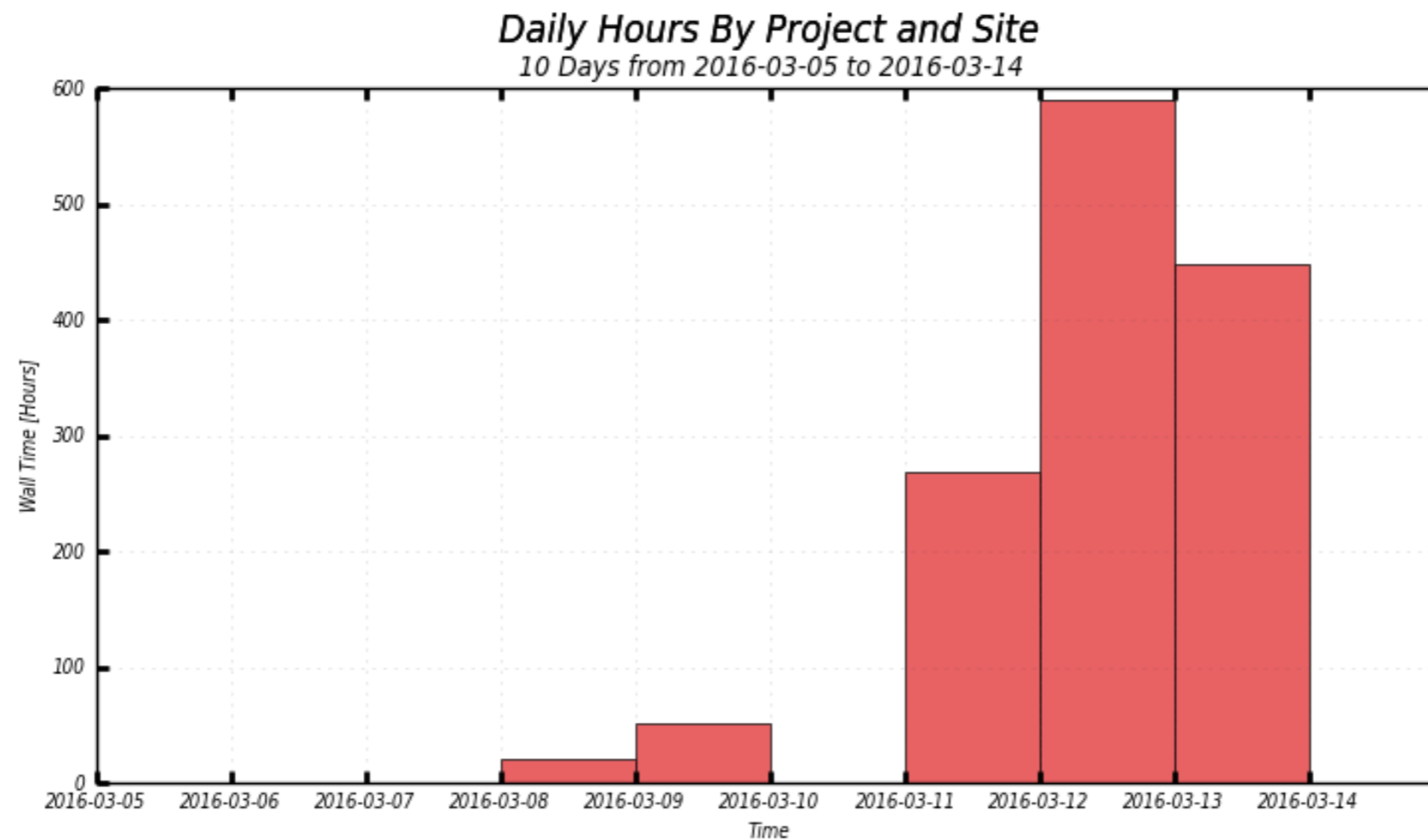
- `yum install htcondor-ce-bosco`
- A simple configuration in `osg-configure`.
- `osg-configure -c` will setup Bosco on the CE and the remote cluster.

Why Bosco?

- Stable and supported by the HTCondor team
- Bosco is quietly being used through the OSG
- For example ...

How it's currently being done

- Last week, AMS began submitting to a local MIT Slurm cluster.



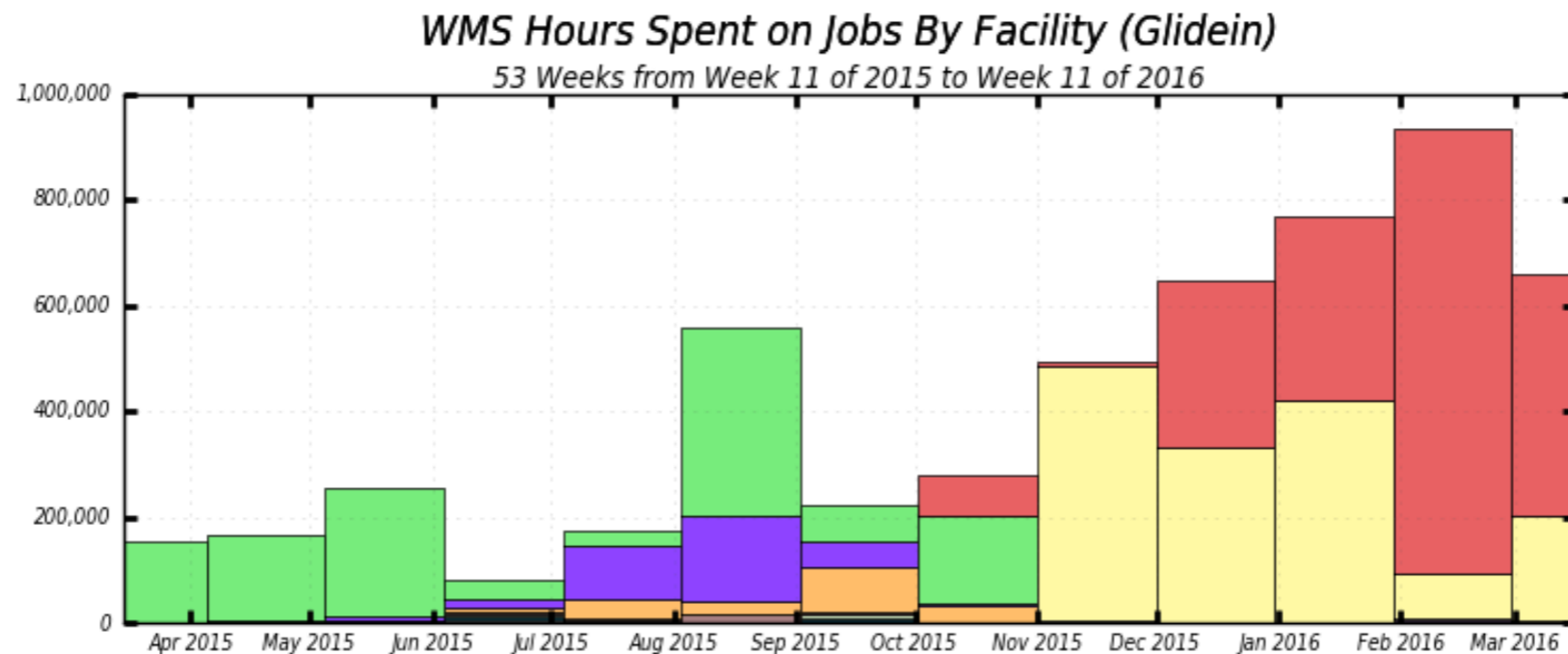
■ AMS , boj@eofe4.mit.edu/pbs

Maximum: 590.21 Hours, Minimum: 0.00 Hours, Average: 153.18 Hours, Current: 447.57 Hours

How it's currently being done

- Bosco is being used all of the OSG, and growing!

5,400,000 Hours



Maximum: 935,694 , Minimum: 79,236 , Average: 415,545 , Current: 661,342

Why did they choose Bosco?

- Wanted to see results very quickly.
 - Often required small software tweaks for each site. Convenient to control the end-to-end for quick iterations.
- Fast progress increases interest and buy-in from sites

HTCondor-CE-Bosco improvements

- Current BOSCO implementations are limited to a single VO submitting to the remote cluster.
- By using an HTCondor-CE-Bosco, multiple VO's can submit to a Bosco instance
- Accounting is the same as any other CE

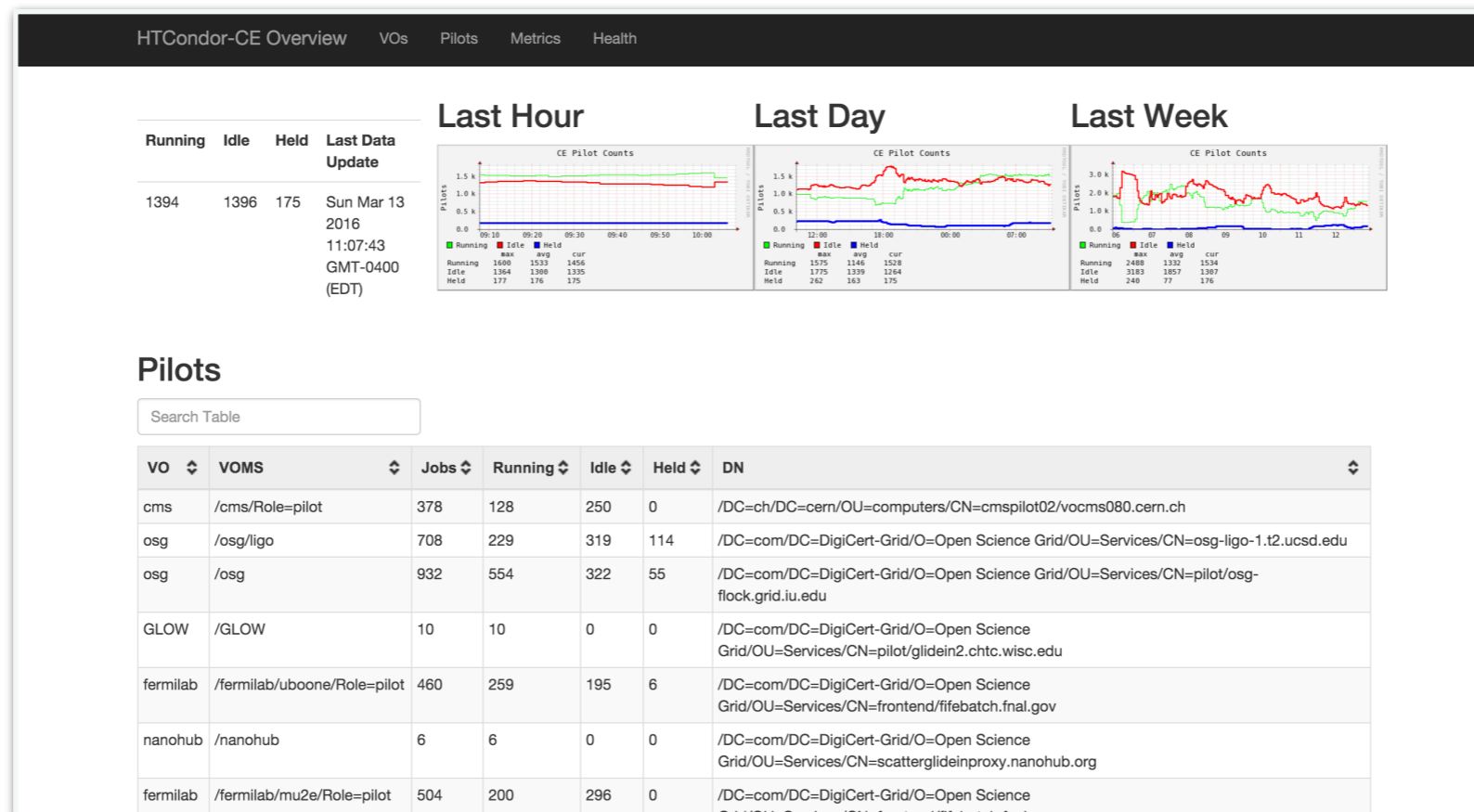
HTCondor-CE-Bosco

- The HTCondor-CE-Bosco will enable a faster on-ramp for new clusters.
- It will provide a great first step to entering the OSG.
 - And allow the OSG-Connect team to offload operational costs to GlideinWMS.
- User support can easily create the CE and send jobs to remote HPC clusters
- **Available later this month**

New Features of HTCondor-CE

HTCondor-CE View

- Provides a clear view into what pilots are running
- Installable through a sub package of htcondor-ce-view



HTCondor Pilot View

- New `condor_ce_status` command output shows the payload information:

```
[root@red ~]# condor_ce_status
```

Worker Node	State	Payload ID	User	Scheduler	Job Runtime	BatchID	BatchUser	Jobs	Pilot Age
red-c0801.unl.edu	Unclaimed				0+15:29:58	5803811.0	cmsprod	37	0+15:30:18
red-c0801.unl.edu	Claimed	436690.16	cmsdataops	msgwms-submit2.fnal.gov	0+04:00:15	5803811.0	cmsprod	37	0+15:30:18
red-c0801.unl.edu	Claimed	437109.65	cmsdataops	msgwms-submit2.fnal.gov	0+04:24:41	5803811.0	cmsprod	37	0+15:30:18
red-c0801.unl.edu	Claimed	437616.56	cmsdataops	msgwms-submit2.fnal.gov	0+00:07:12	5803811.0	cmsprod	37	0+15:30:18
red-c0801.unl.edu	Claimed	437132.39	cmsdataops	msgwms-submit2.fnal.gov	0+04:09:59	5803811.0	cmsprod	37	0+15:30:18
red-c0801.unl.edu	Claimed	437110.8	cmsdataops	msgwms-submit2.fnal.gov	0+04:22:43	5803811.0	cmsprod	37	0+15:30:18
red-c0801.unl.edu	Claimed	437214.89	cmsdataops	msgwms-submit2.fnal.gov	0+03:46:19	5803811.0	cmsprod	37	0+15:30:18
red-c0801.unl.edu	Claimed	437135.91	cmsdataops	msgwms-submit2.fnal.gov	0+04:06:04	5803811.0	cmsprod	37	0+15:30:18
red-c0801.unl.edu	Claimed	437113.83	cmsdataops	msgwms-submit2.fnal.gov	0+04:16:42	5803811.0	cmsprod	37	0+15:30:18
red-c0803.unl.edu	Unclaimed				0+01:36:42	5804385.0	cmsprod	34	0+01:37:03
red-c0803.unl.edu	Claimed	437620.6	cmsdataops	msgwms-submit2.fnal.gov	0+00:08:25	5804385.0	cmsprod	34	0+01:37:03
red-c0803.unl.edu	Claimed	61125.0	cmst1	vocms0311.cern.ch	0+00:48:54	5804385.0	cmsprod	34	0+01:37:03
red-c0803.unl.edu	Claimed	437536.40	cmsdataops	msgwms-submit2.fnal.gov	0+00:46:01	5804385.0	cmsprod	34	0+01:37:03

Questions?