

The MINERvA Operations Report

All Experimenters Meeting

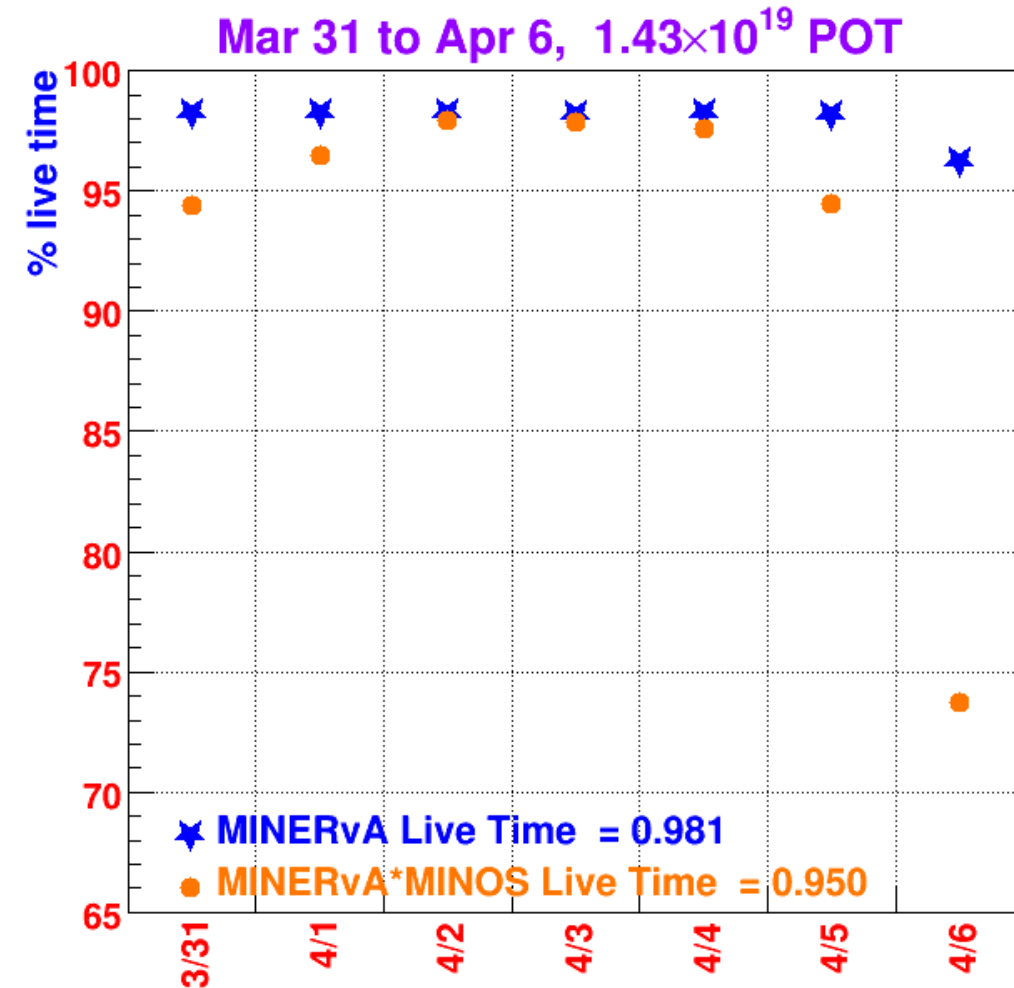
Howard Budd, University of Rochester

Apr 11, 2016





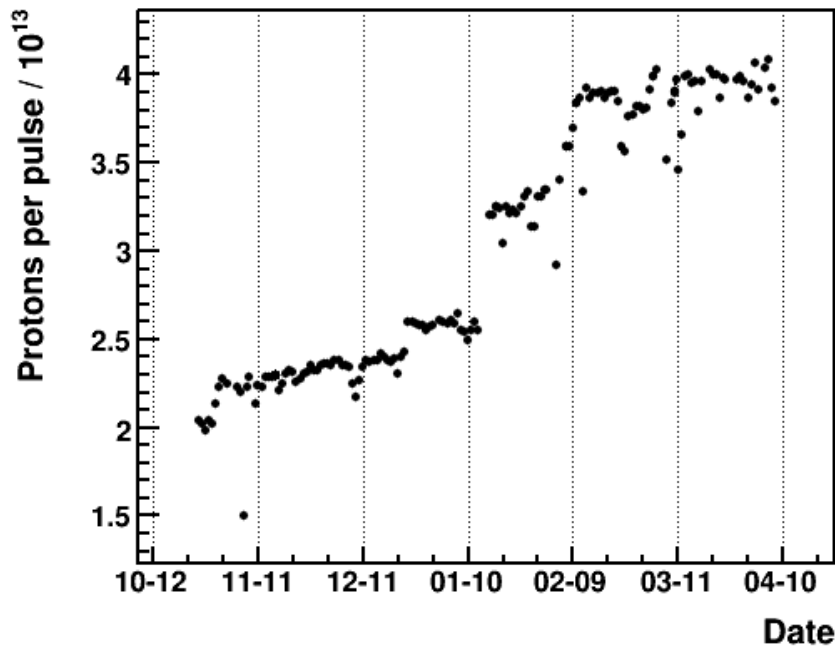
v Data



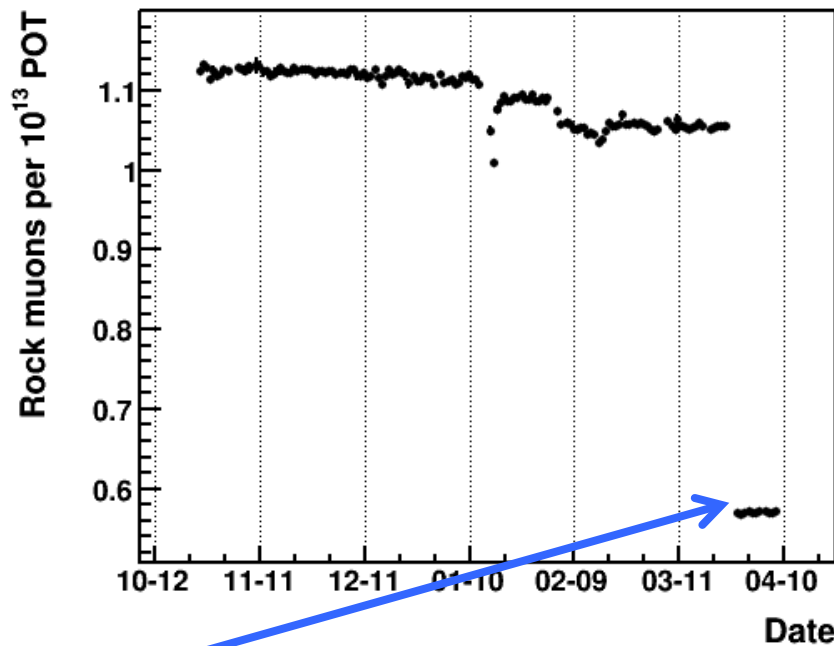
- Live Time – Mar 31-Apr 6, 2016
- 1.43×10^{19} POT
- MINERvA 98.1%
- MINERvA*MINOS 95.0%
- Apr 6 – 96.2% live
 - DAQ error on the new chain, 1-6-3.



Rock Muons/POT



POT/Pulse

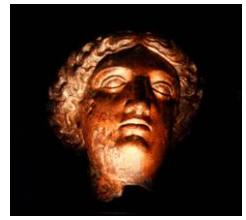


Rock Muons/POT

- The issue is described on the next page



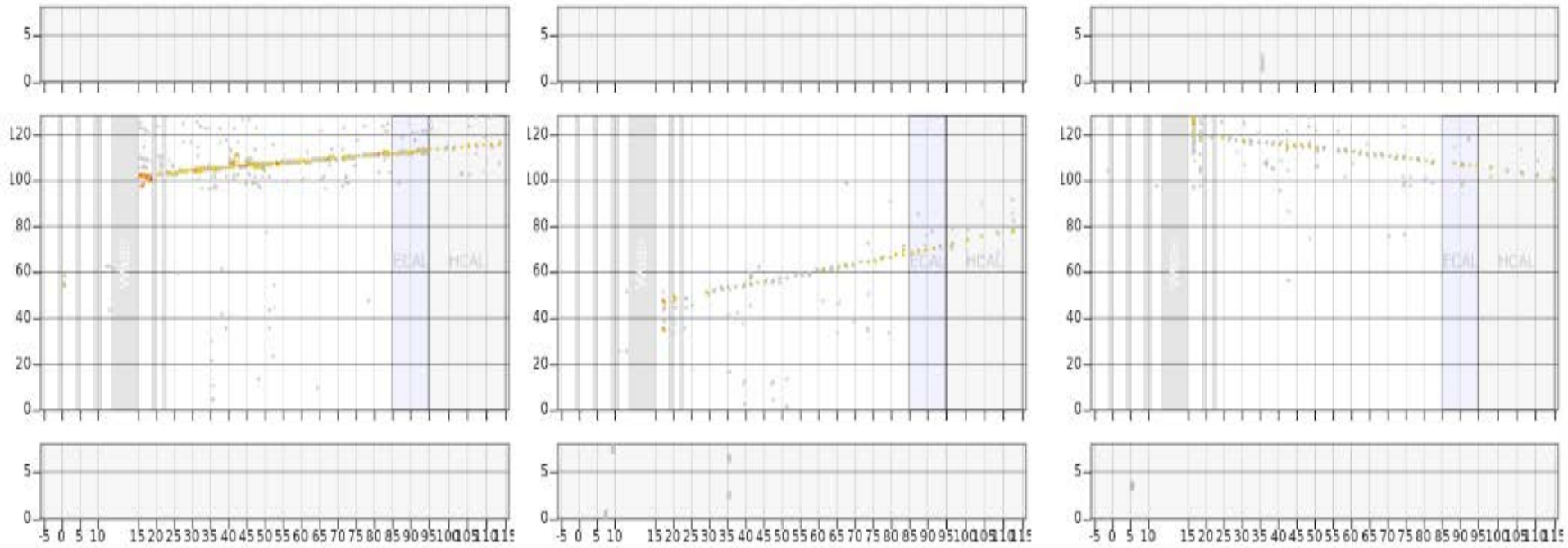
Rock Muons/POT



- This is a lingering effect of the swapping chain 1-2-3 to 1-6-3 on March 25. Changing the hardware associated with the electronics address necessitates updating the FEB calibrations database, which is catalogued by the electronics address. Attempts to do this uncovered unrelated issues which needed to be addressed. We understand these issues and expect to have this entirely resolved in the next couple of days.
- The data for the new chain 1-6-3 is fine.



Event Display



X View

V View

U View

Water Target CCQE



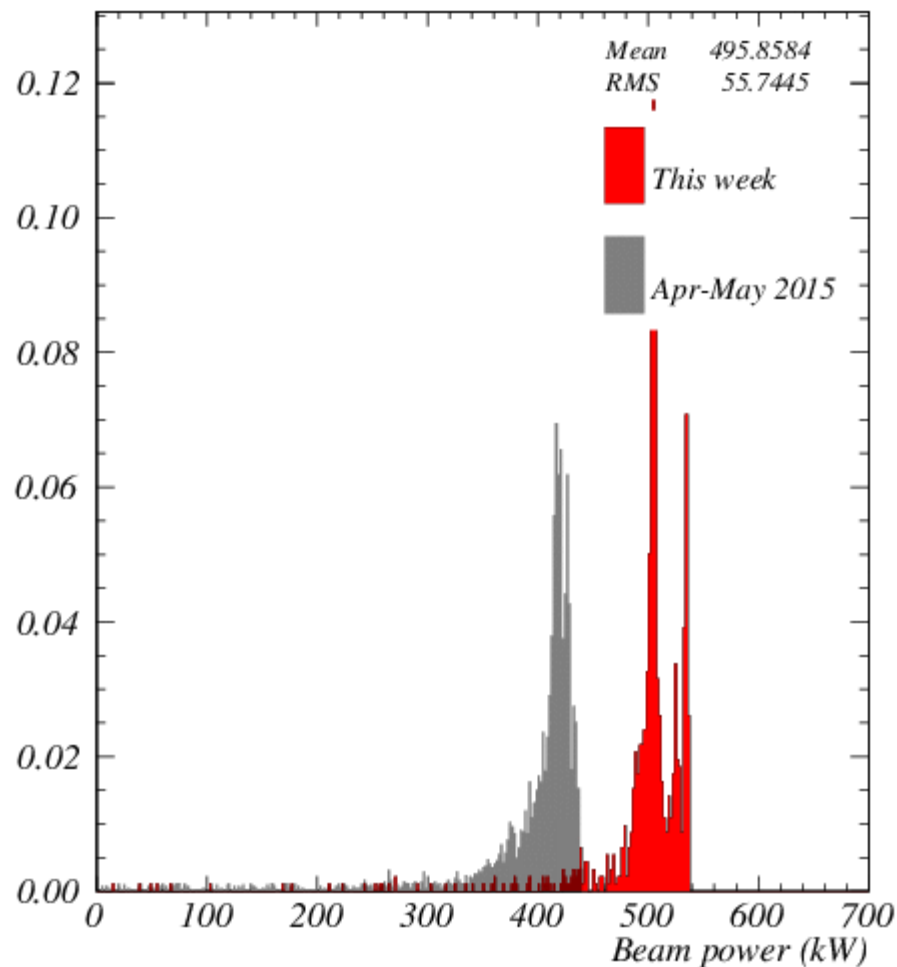
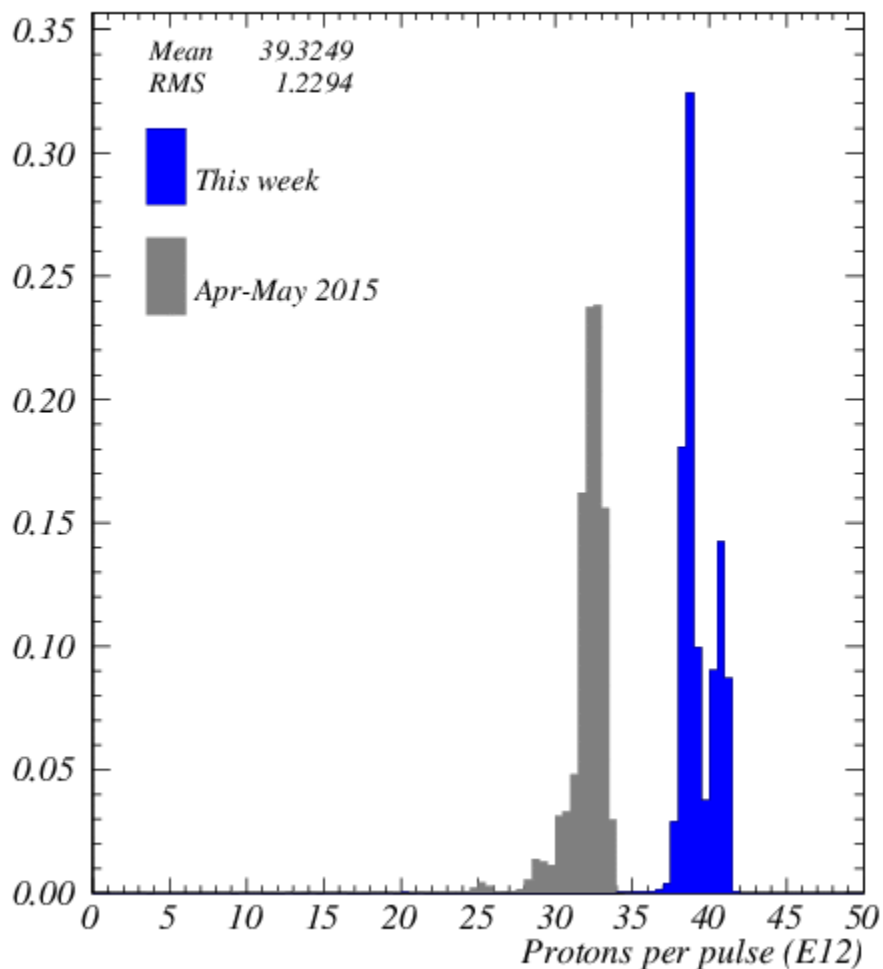
NuMI Beam Plots

Apr 4-10, 2016



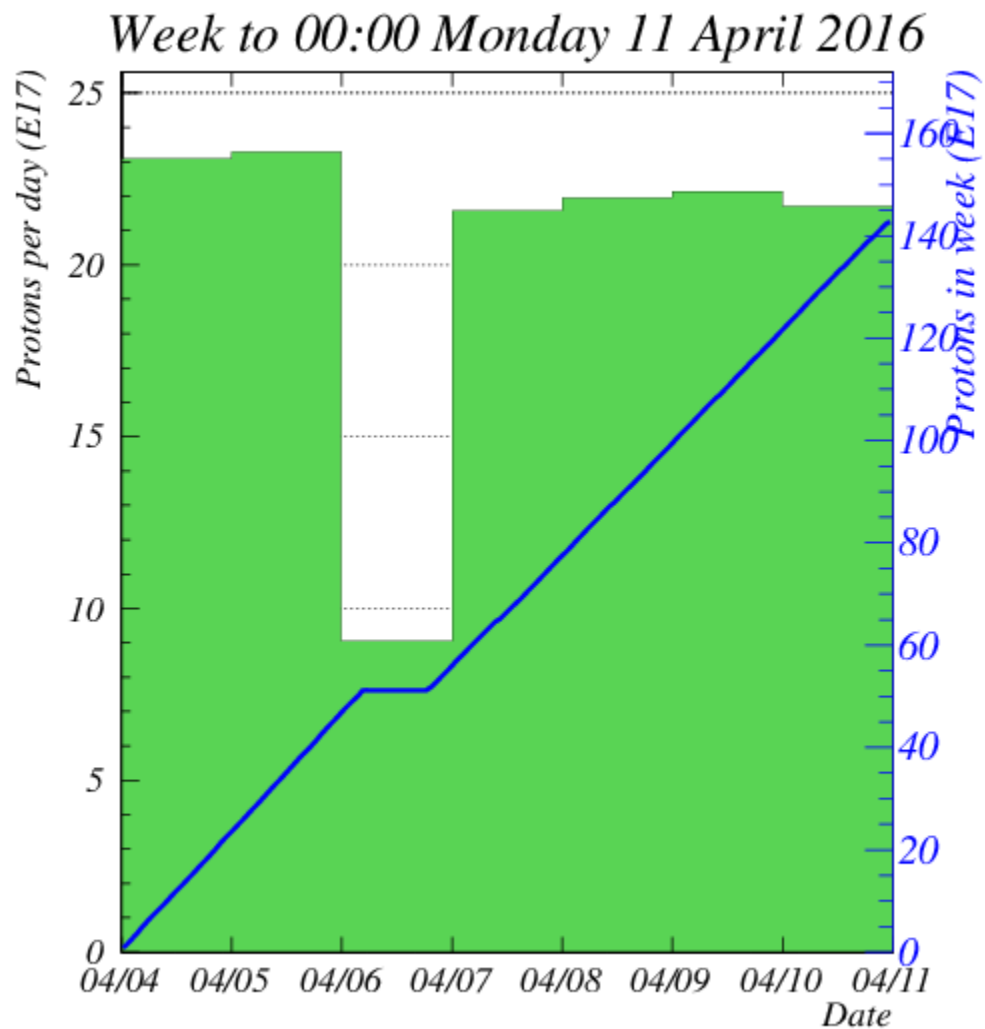
Week ending 00:00 Monday 11 April 2016

Week ending 00:00 Monday 11 April 2016





Protons for the Week



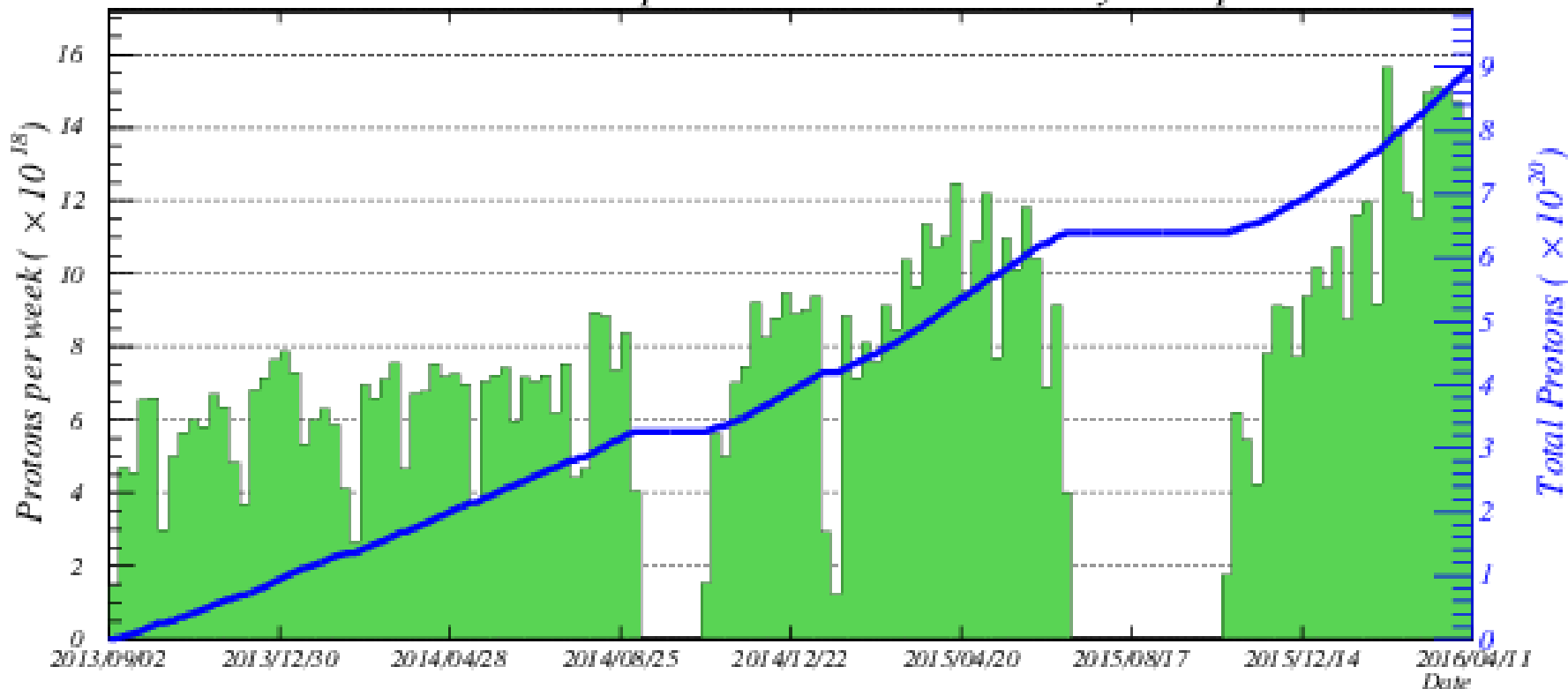
1.43×10^{19} POT
Apr 4-10, 2016



Protons for ME Run



Total MINOS+/*NO*vA protons to 00:00 Monday 11 April 2016



89.86×10^{19} POT - Sep 6, 2013 – Apr 10, 2016