



MINOS+ All Experimenters' Meeting Report

A.P. Schreckenberger
2016-5-9

Detector Issues

- ▶ FD pretty quiet the past week
- ▶ ND likes to be loud
 - ▶ RPS alarm on the 10th required an access to ND
 - ▶ I sang to the rack, and it reset and repowered successfully
 - ▶ ND U10 Wiener power supply had repeated trips and was eventually swapped
 - ▶ Looking into another calibration issue – gains have garnered attention
 - ▶ Investigation ongoing



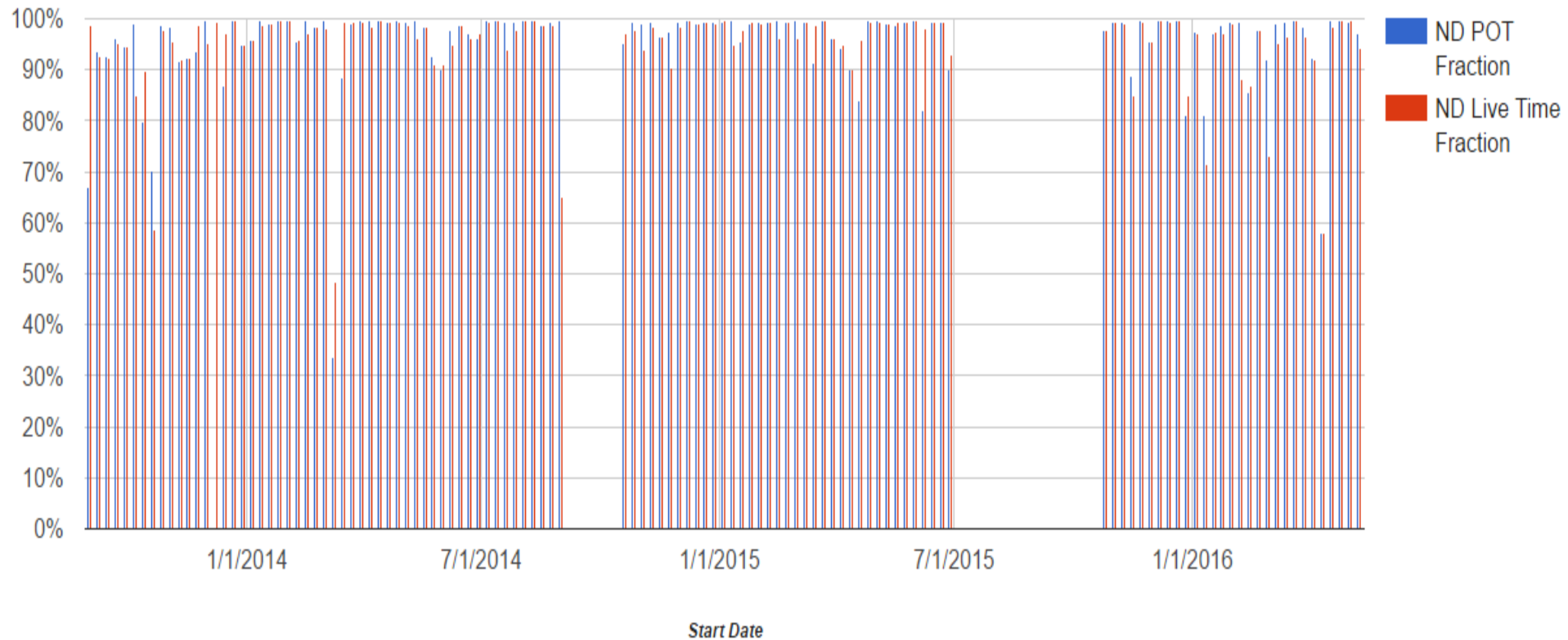
MINOS+ Status

Start Date/Time	End Date/Time	Near Detector		Far Detector	
		POT Fraction	Live Time Fraction	POT Fraction	Live Time Fraction
3/14/16 00:00:00	3/21/16 00:00:00	99.3%	96.5%	99.8%	99.5%
3/21/16 00:00:00	3/28/16 00:00:00	99.7%	99.7%	99.8%	99.8%
3/28/16 00:00:00	4/4/16 00:00:00	98.5%	96.5%	98.3%	98.2%
4/4/16 00:00:00	4/11/16 00:00:00	92.4%	91.9%	99.9%	97.9%
4/11/16 00:00:00	4/18/16 00:00:00	58.3%	58.7%	99.8%	99.9%
4/18/16 00:00:00	4/25/16 00:00:00	99.6%	98.3%	99.4%	99.5%
4/25/16 00:00:00	5/2/16 00:00:00	99.6%	99.7%	98.0%	98.0%
5/2/16 00:00:00	5/9/16 00:00:00	99.5%	99.6%	94.0%	93.8%
5/9/16 00:00:00	5/16/16 00:00:00	97.0%	94.3%	99.9%	99.5%

Bold: LI Issue ND

ND Status

ND POT fraction and Live Time Fraction



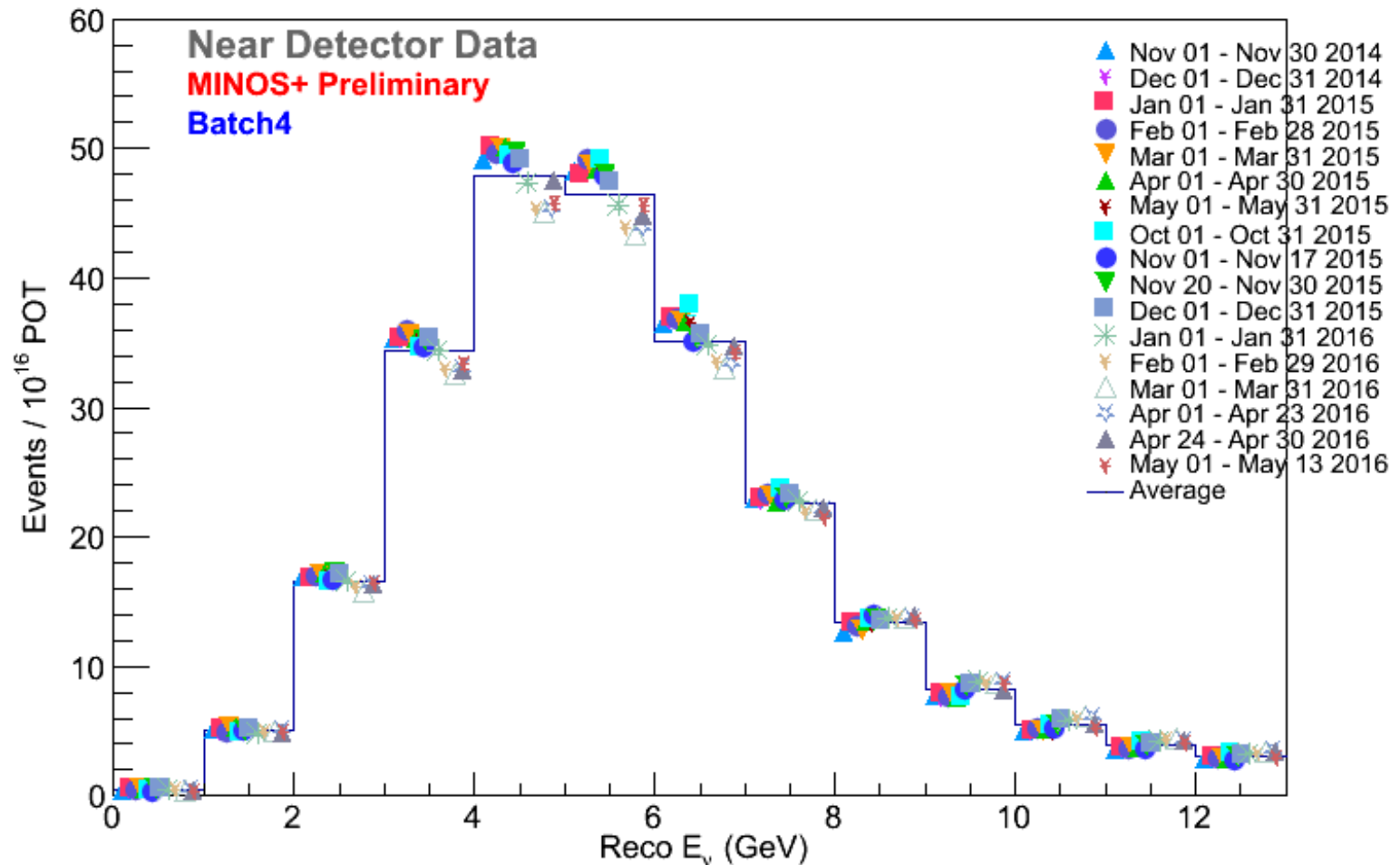
FD Status

FD POT Fraction and Live Time Fraction



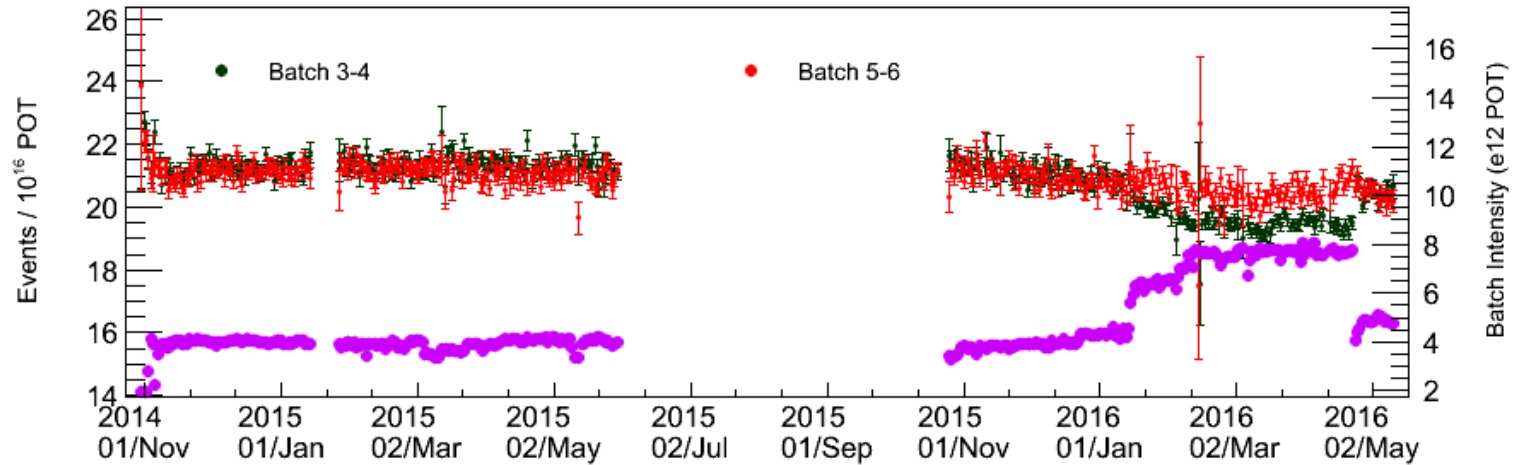
Spectrum Stability Batch 4

Neutrino Selected Batch Energy Spectrum Stability (PQ and NQ)

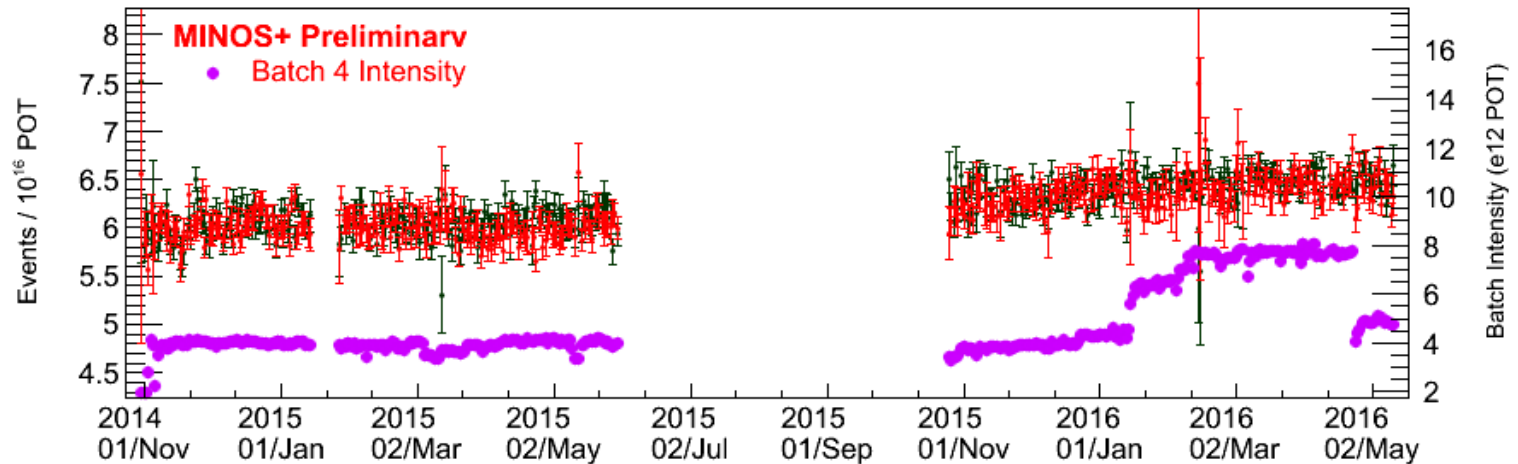


Events/POT vs Time

Neutrino Events Per POT v.s. Time ($E_{\nu} < 8 \text{ GeV}$)

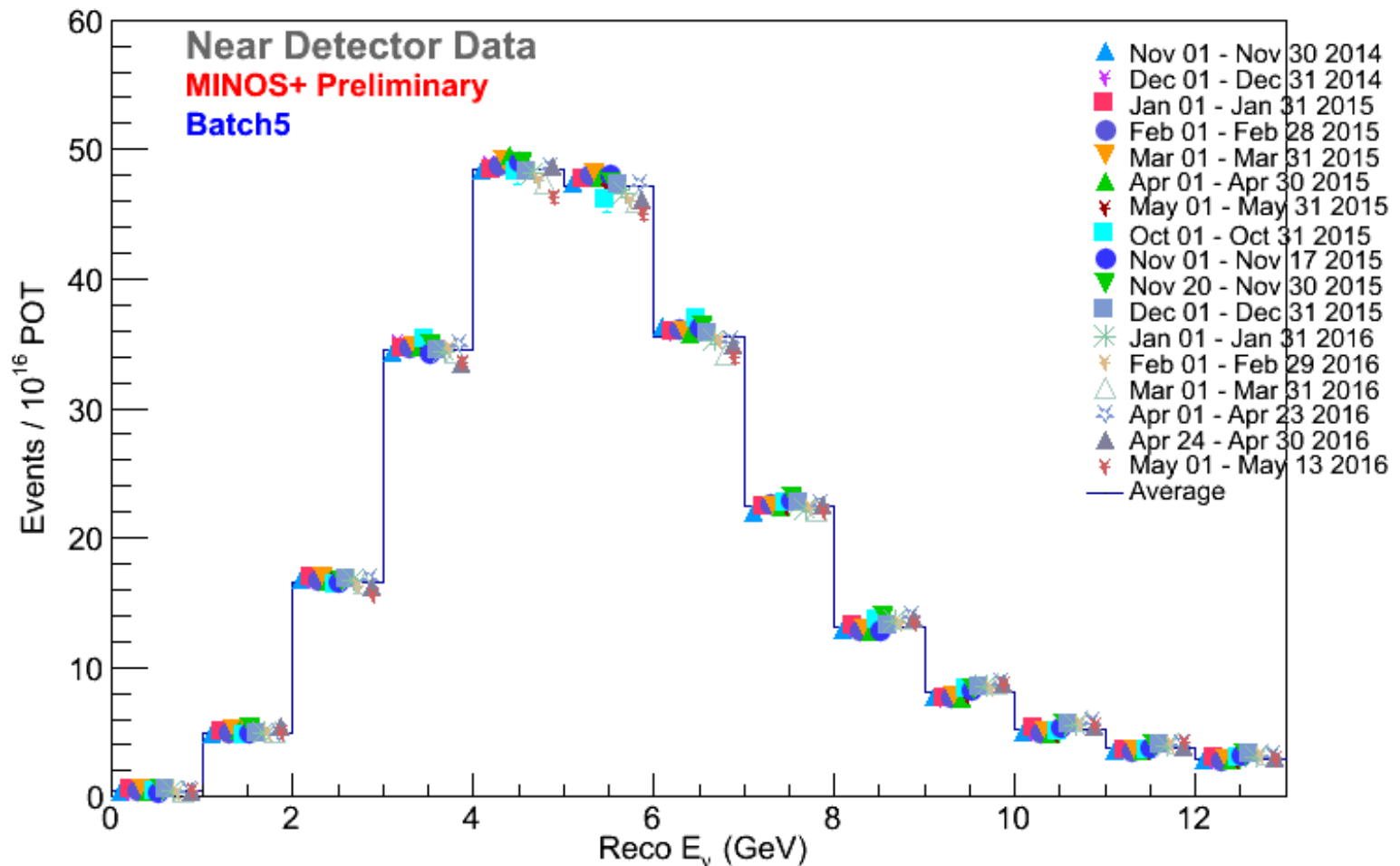


Neutrino Events Per POT v.s. Time ($E_{\nu} > 8 \text{ GeV}$)



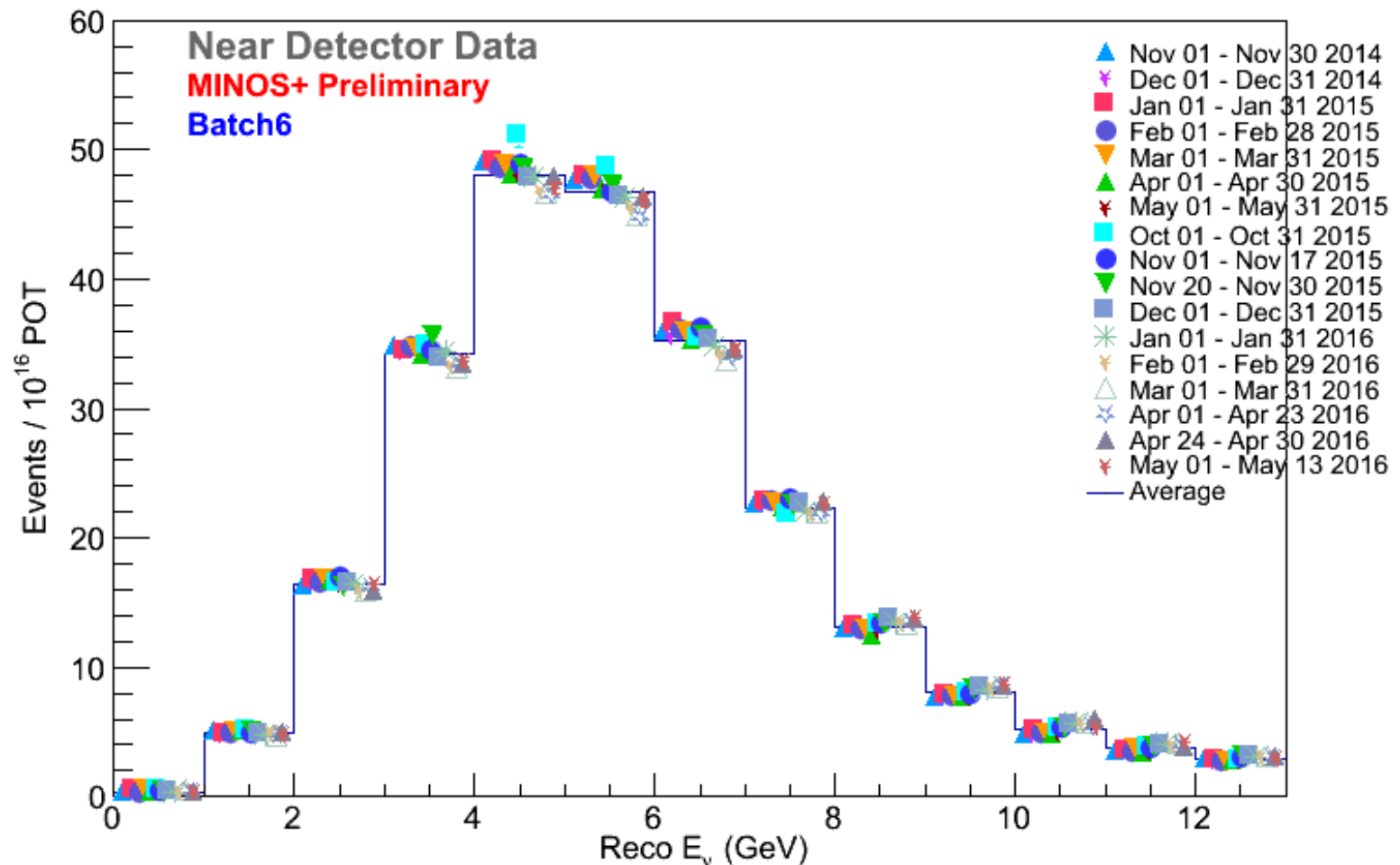
Spectrum Stability Batch 5

Neutrino Selected Batch Energy Spectrum Stability (PQ and NQ)

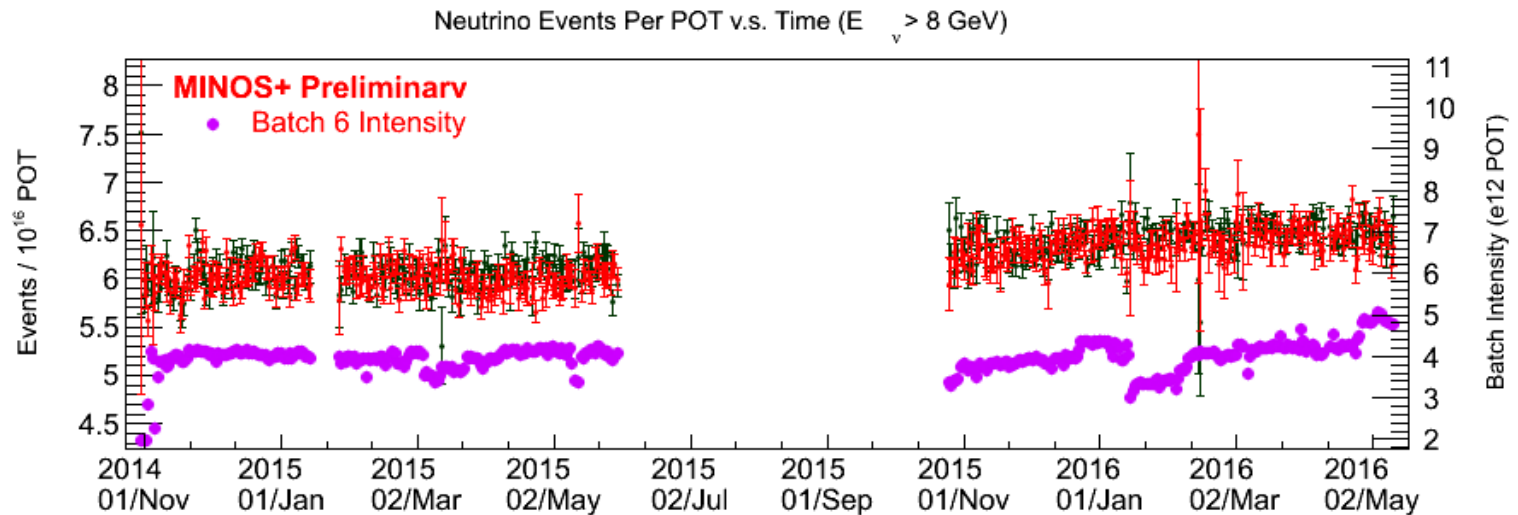
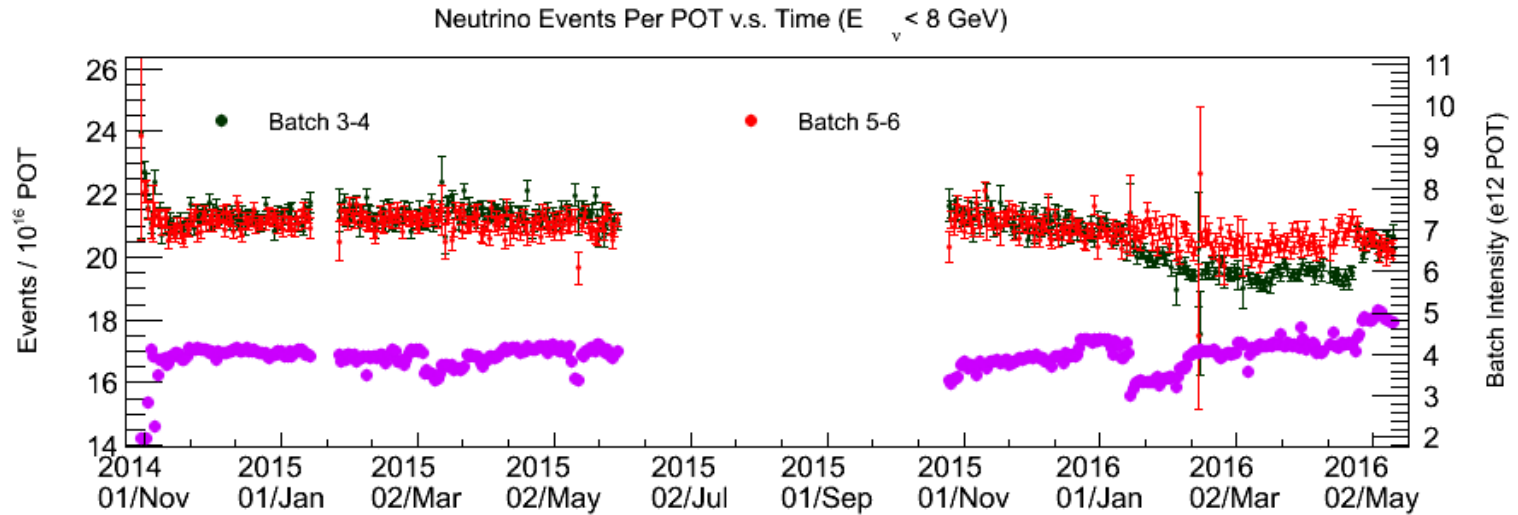


Spectrum Stability Batch 6

Neutrino Selected Batch Energy Spectrum Stability (PQ and NQ)



Events/POT vs Time



Spectrum by Batch!

- ▶ <http://minos.fnal.gov/DataQuality/BatchPage.php>
- ▶ Look, it's a link.
 - ▶ The same one from before, yet now with updated things...