

# The MINERvA Operations Report

## All Experimenters Meeting

Howard Budd, University of Rochester  
May 16, 2016

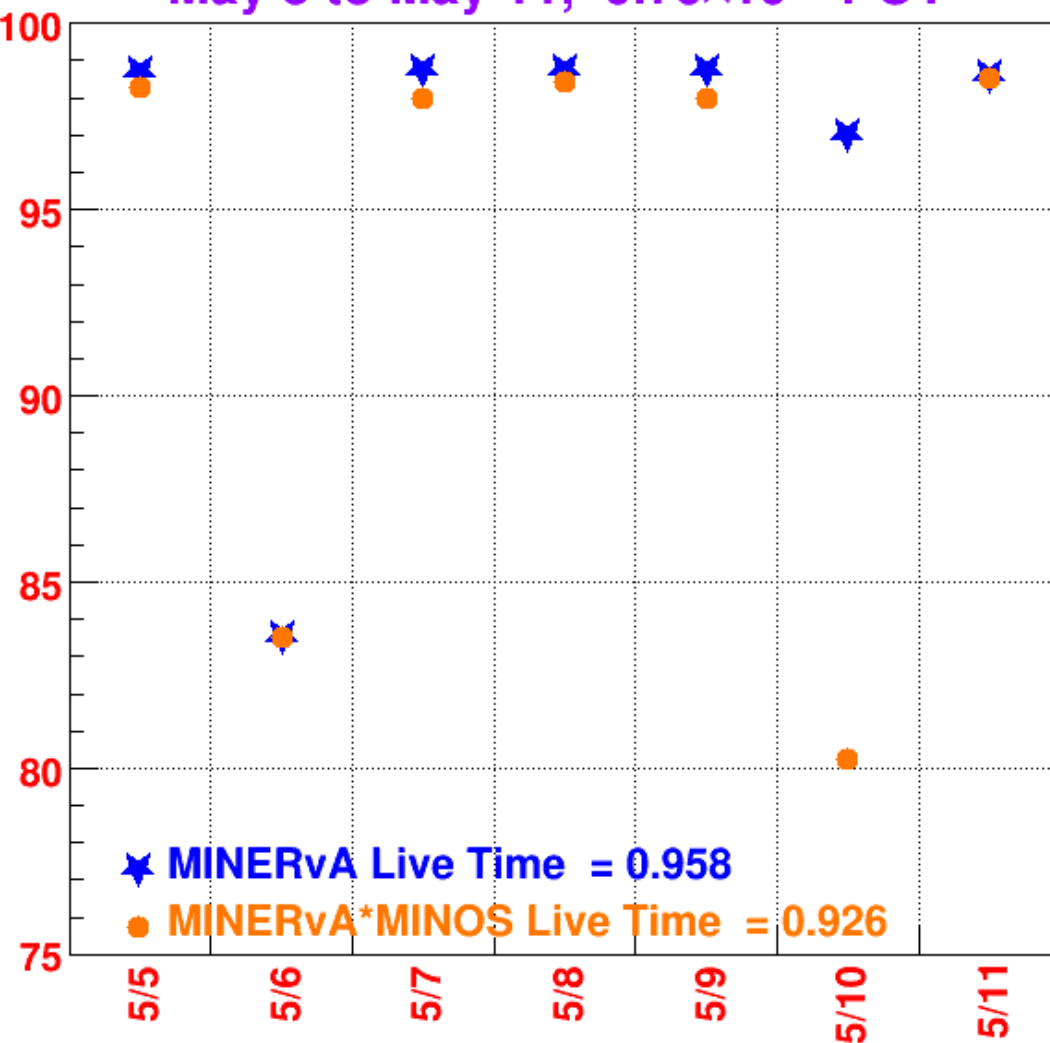




# $\nu$ Data



May 5 to May 11,  $0.79 \times 10^{19}$  POT



- Live Time – May 5-11
- $0.79 \times 10^{19}$  POT
- MINERvA 95.8%
- MINERvA\*MINOS 92.6%



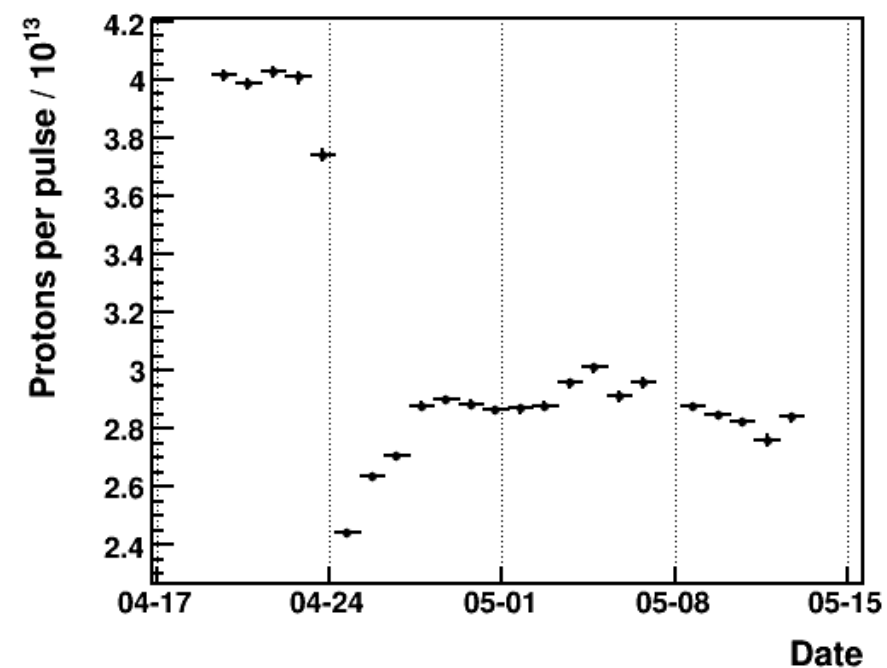
# v Data



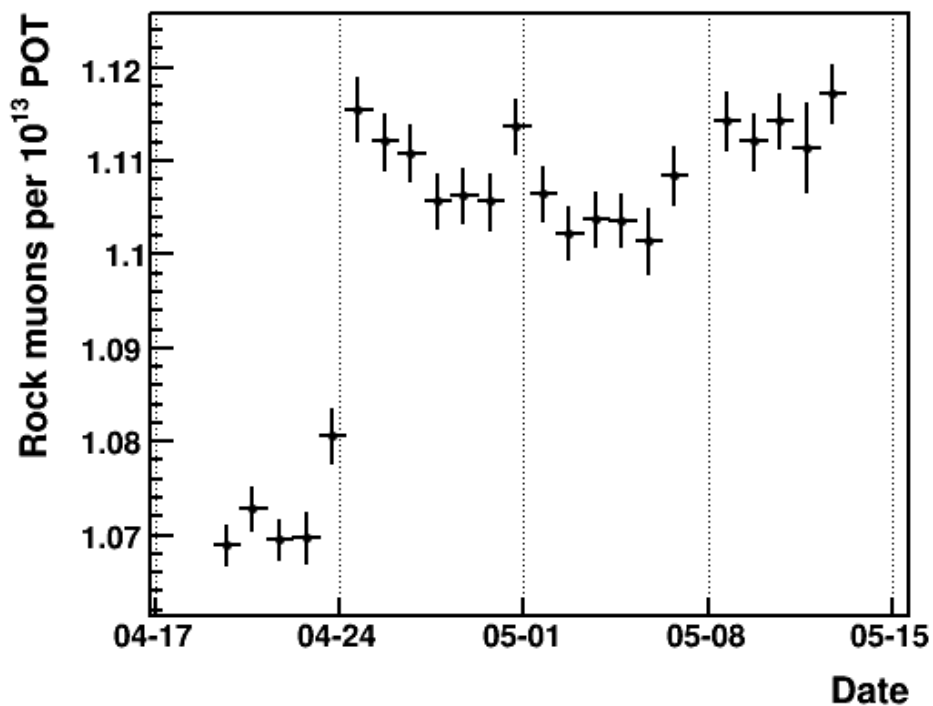
- May 6 – 83.5%
  - A chain failed. The “watchdog” told us there was a DAQ failure. Almost always a chain can be recovered using software such as “slow\_control”. In this case the FESB failed. A FESB converts the incoming 48 volts to 4 volts and powers all the FEBs on a chain. When the FESB was replaced, the chain was powered, and the DAQ worked.
    - This is the 2nd FESB failure in last 5 ½ years.



# Rock Muons/POT



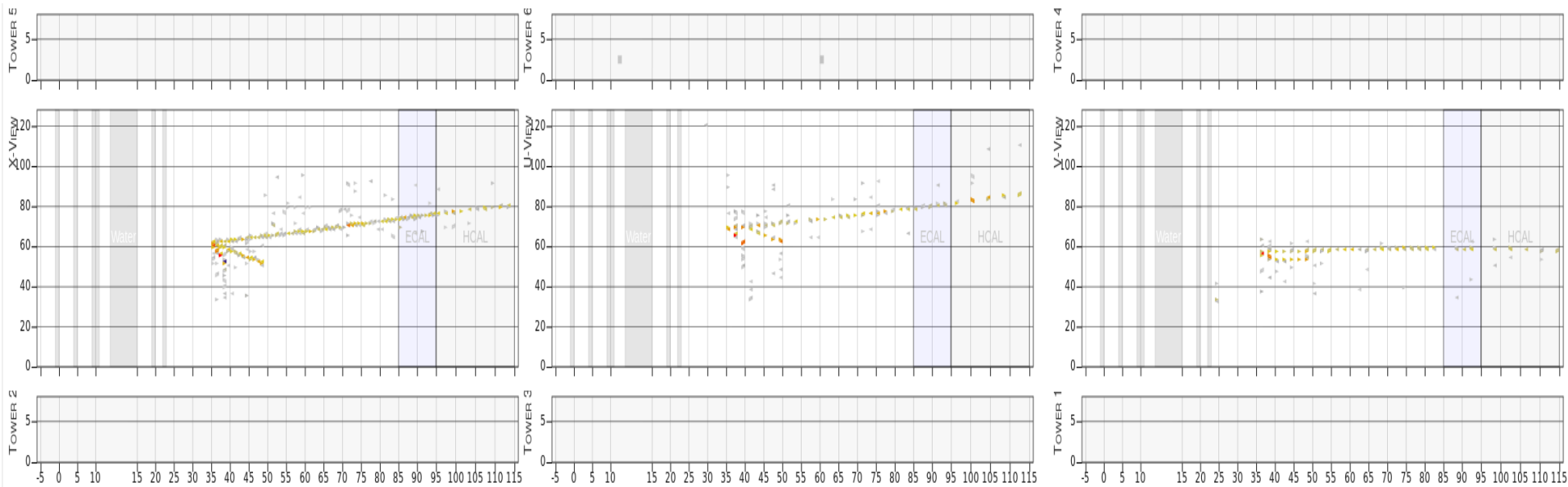
POT/Pulse



Rock Muons/POT



# Event Display



X View

V View

U View

Tracker CC Event

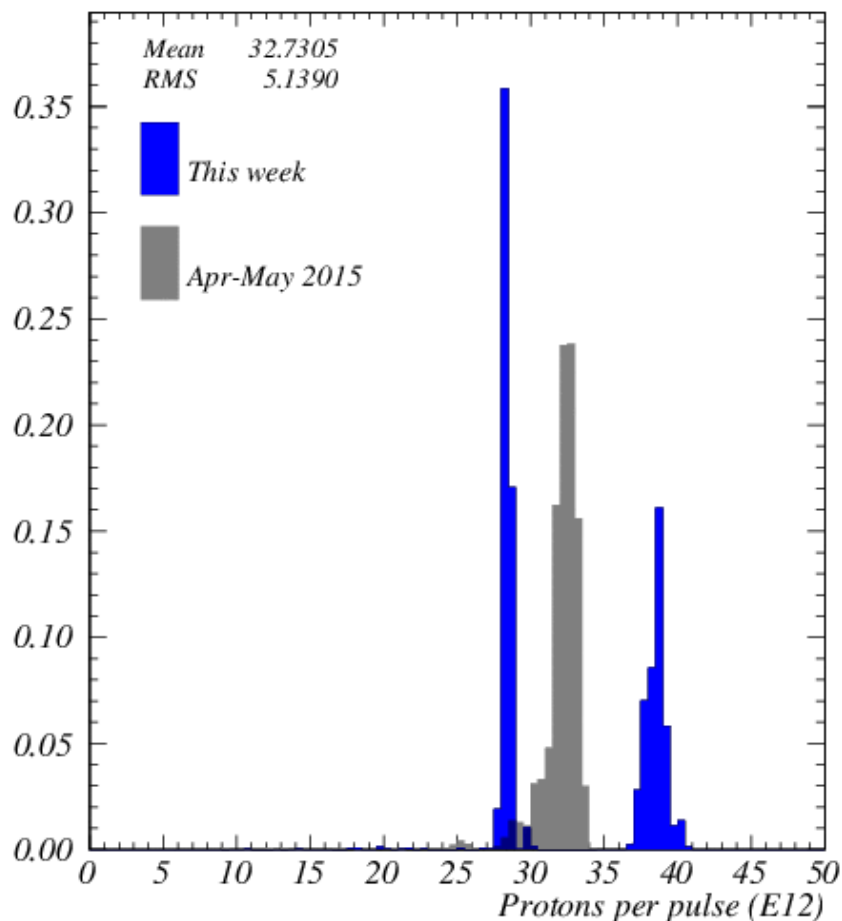


# NuMI Beam Plots

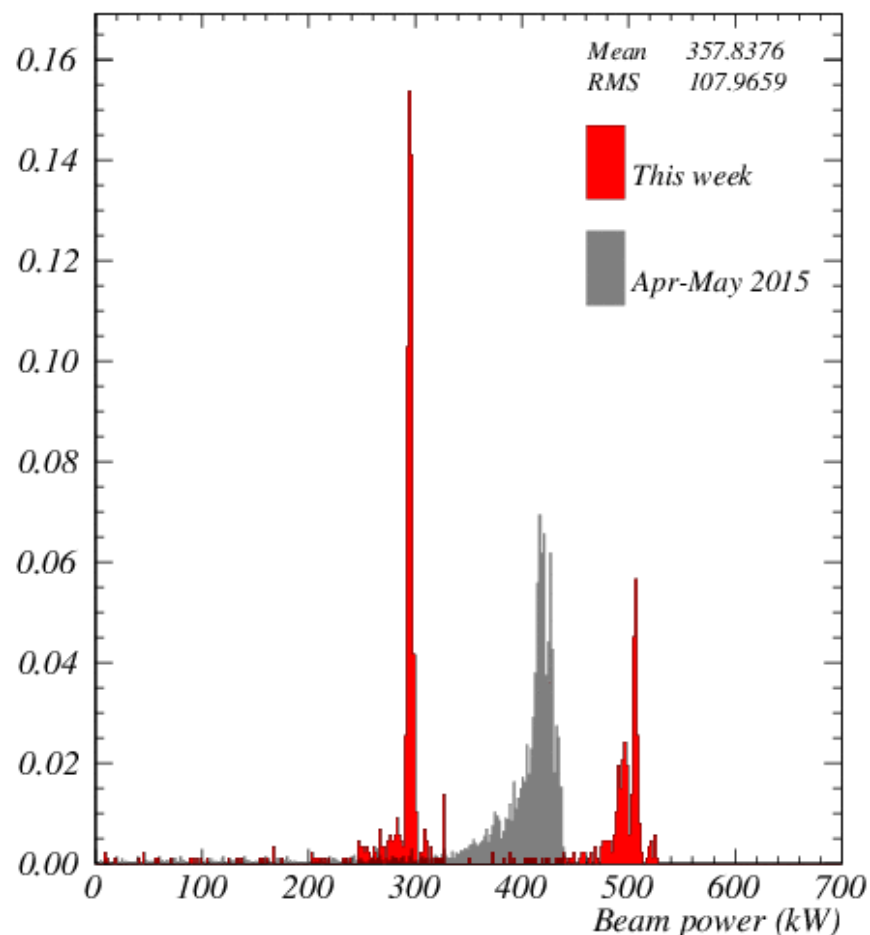
## May 9-15, 2016



*Week ending 00:00 Monday 16 May 2016*



*Week ending 00:00 Monday 16 May 2016*

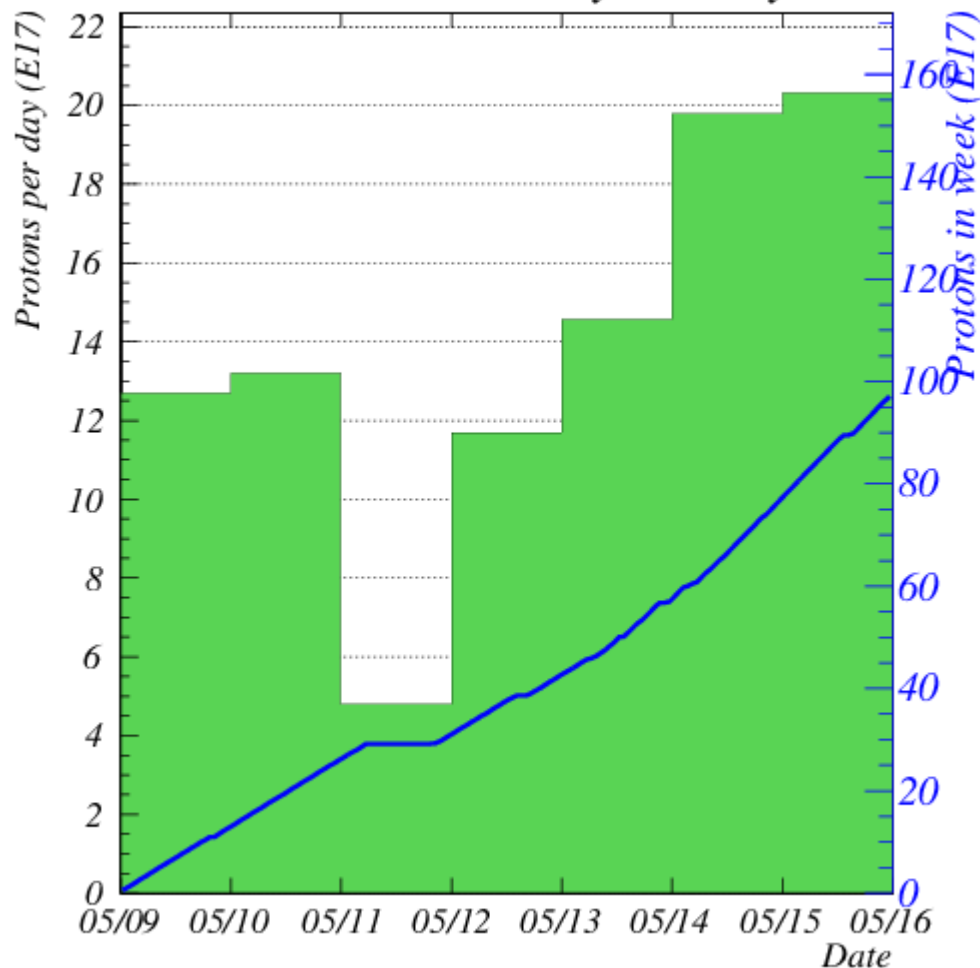




# Protons for the Week



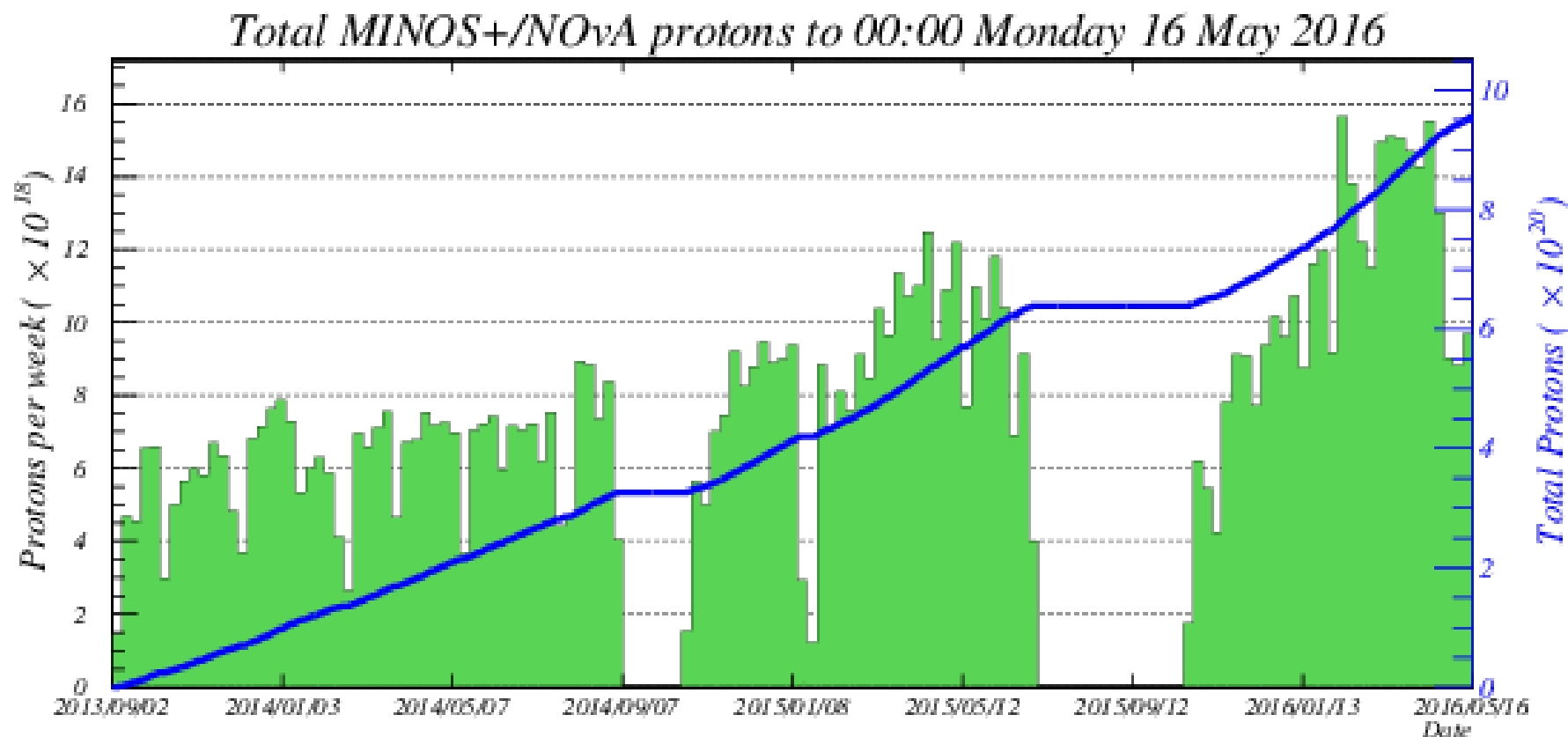
Week to 00:00 Monday 16 May 2016



$0.97 \times 10^{19}$  POT  
May 9-15, 2016



# Protons for ME Run



**$95.47 \times 10^{19}$  POT - Sep 6, 2013 – May 15, 2016**