

The MINERvA Operations Report

All Experimenters Meeting

Howard Budd, University of Rochester
May 23, 2016

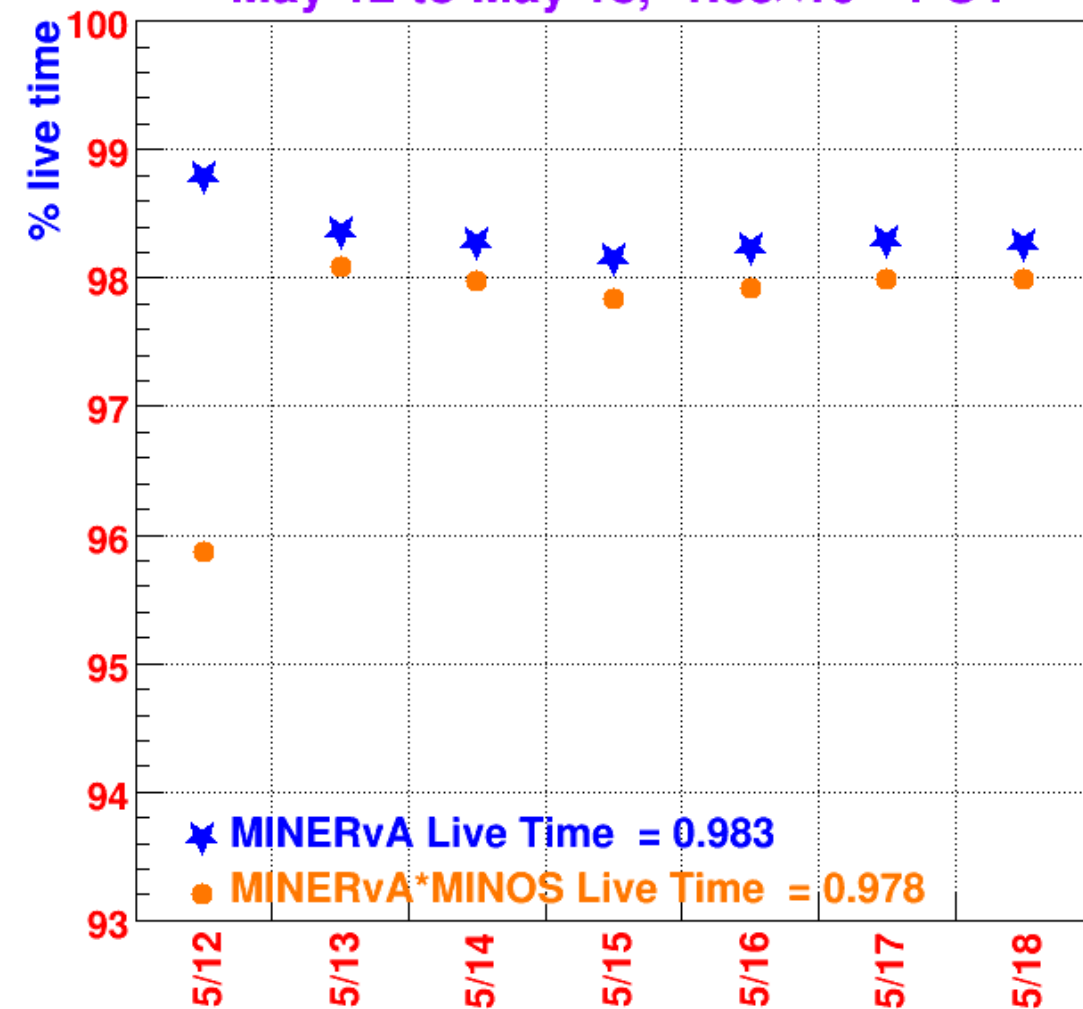




v Data



May 12 to May 18, 1.35×10^{19} POT



- Live Time – May 12-18
- 1.35×10^{19} POT
- MINERvA 98.3%
- MINERvA*MINOS 97.9%



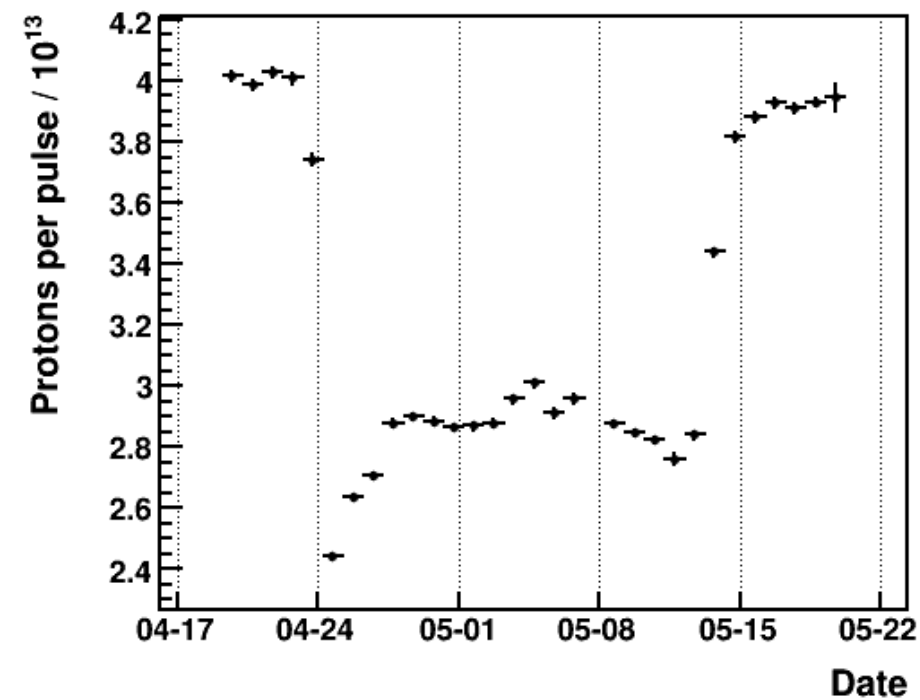
v Data



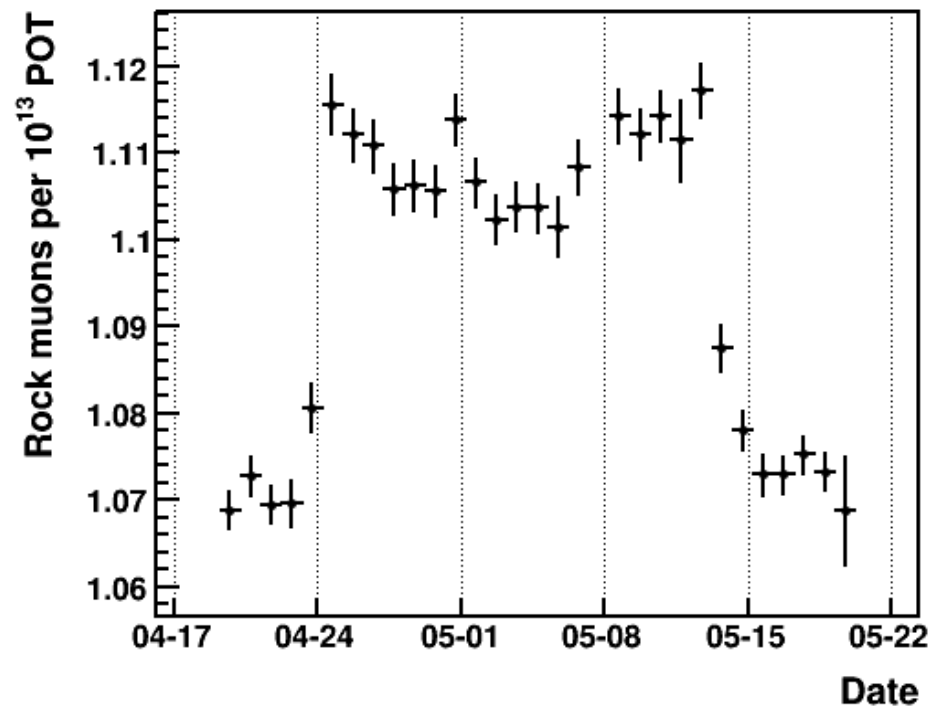
- May 6 – 83.5%, Update on FESB problem from last week
 - A FESB failed and caused a chain to fail.
 - A FESB converts the incoming 48 volts to 4 volts and powers all the FEBs on a chain.
 - Jamieson Olson, PPD EED, looked over the FESB. It looks like contamination from water got inside the FESB through the cooling holes. This likely caused the failure. Probably, this contamination came before the roof was installed. The adjacent FESB has the same contamination on its outside. We will check the FESBs with contamination on the outside during the summer shutdown. The “2011 Easter Rain Storm” soaked this area.



Rock Muons/POT



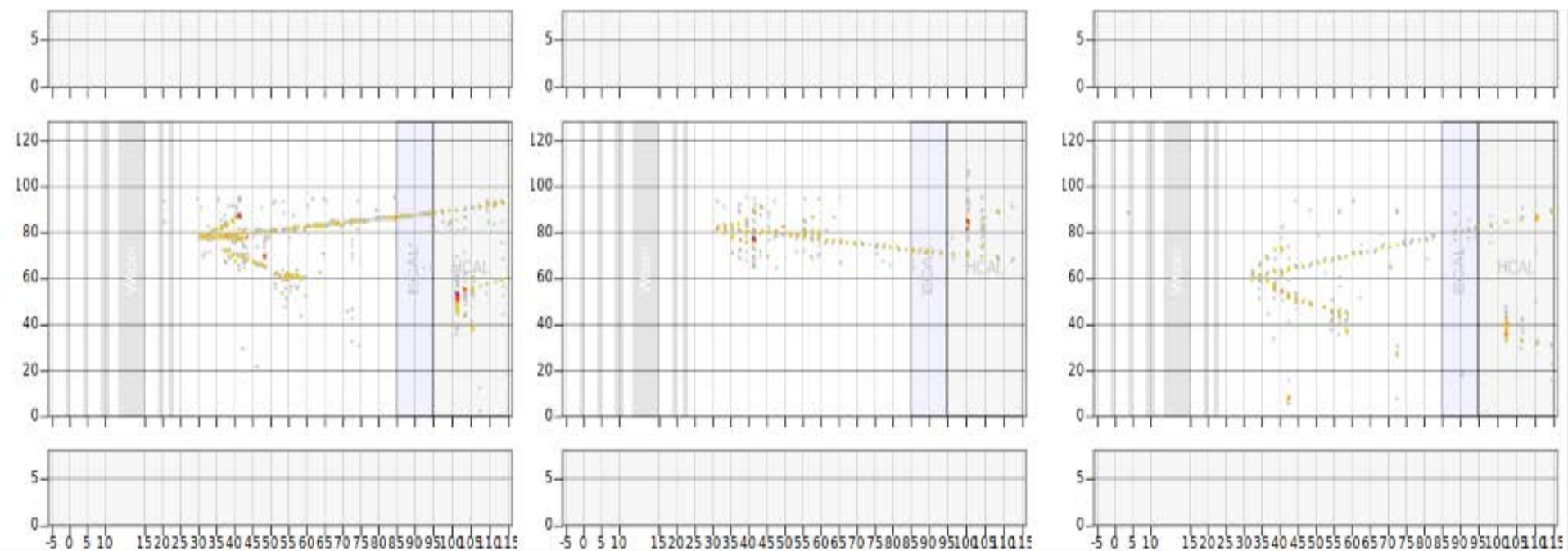
POT/Pulse



Rock Muons/POT



Event Display



X View

V View

U View

Tracker CC Event

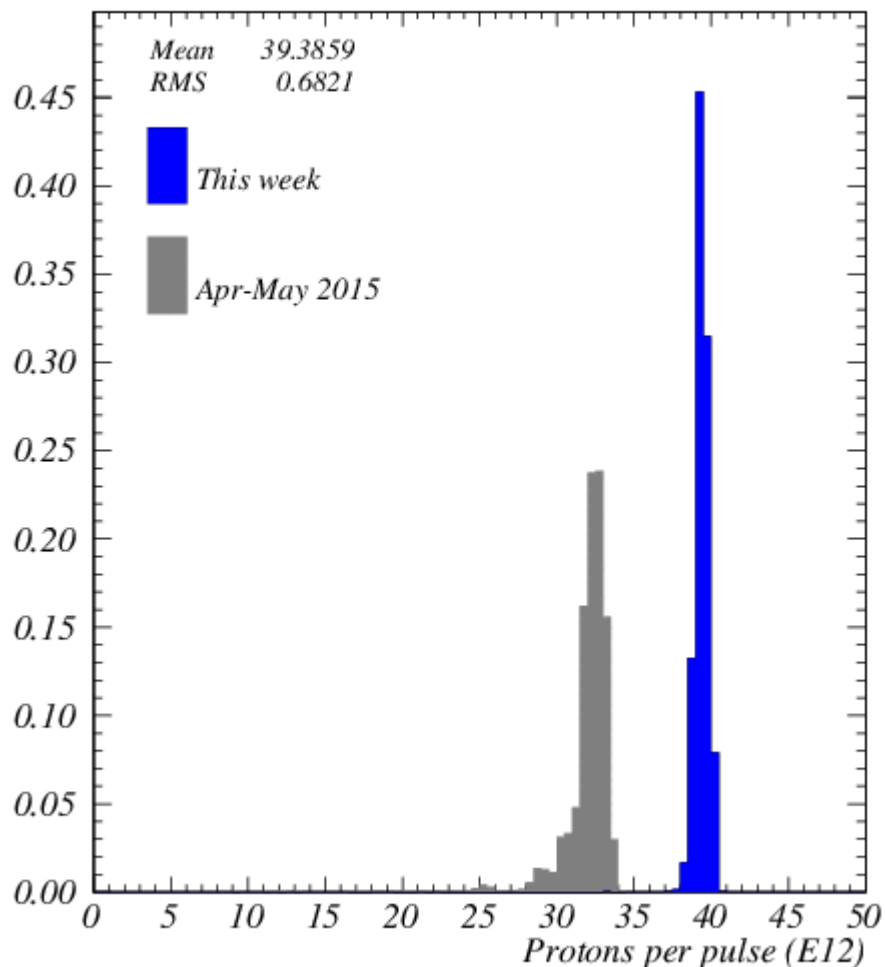


NuMI Beam Plots

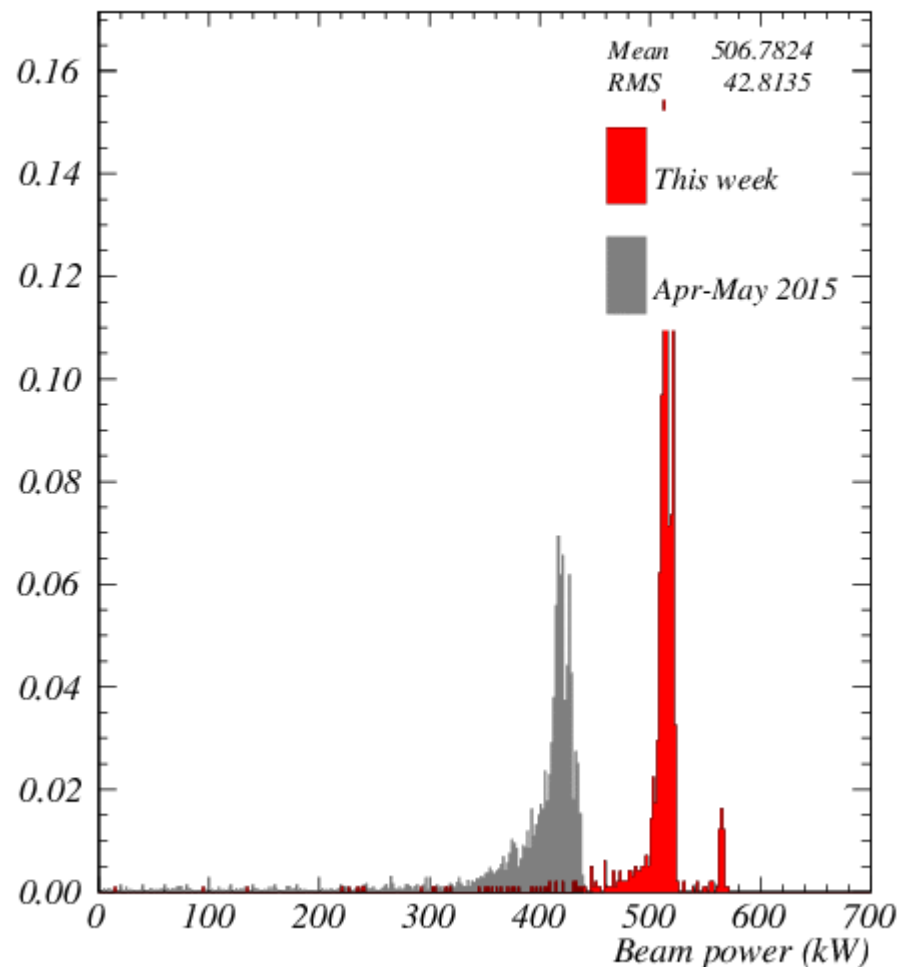
May 16-22, 2016



Week ending 00:00 Monday 23 May 2016

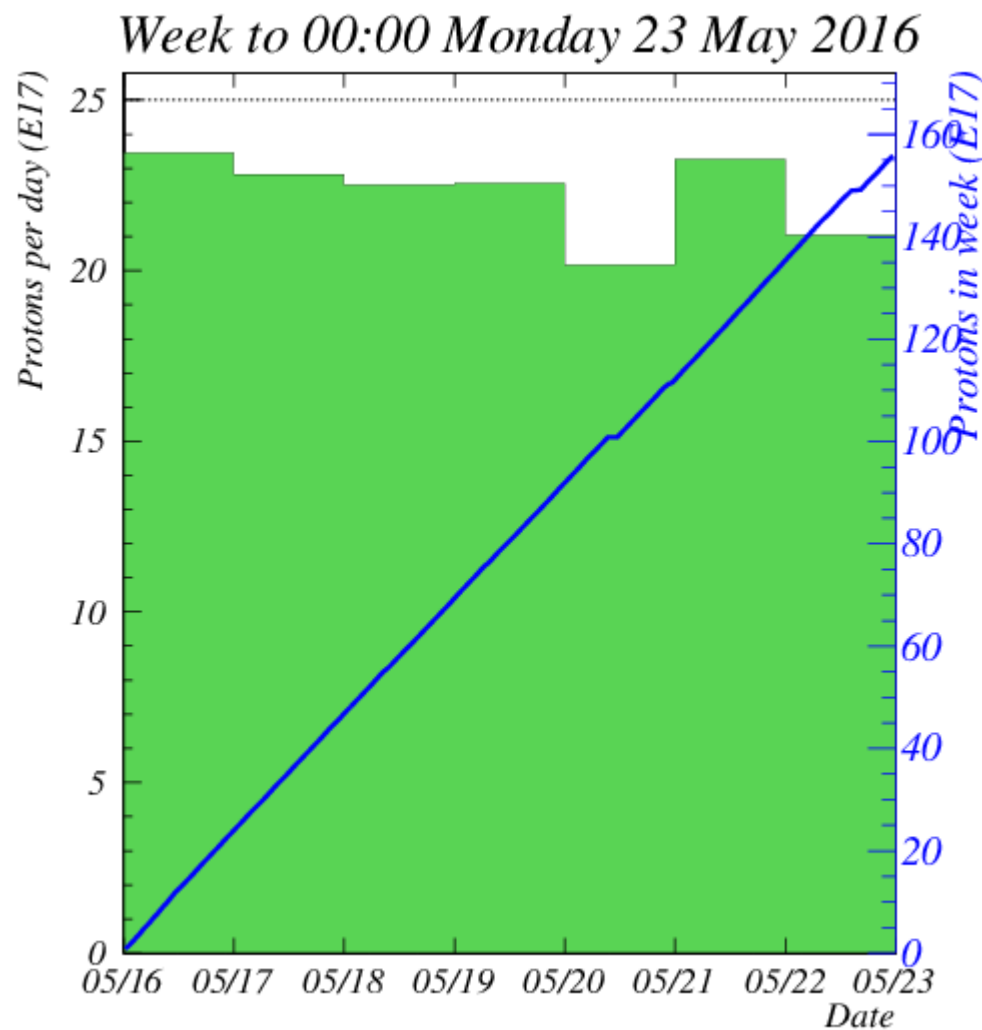


Week ending 00:00 Monday 23 May 2016





Protons for the Week



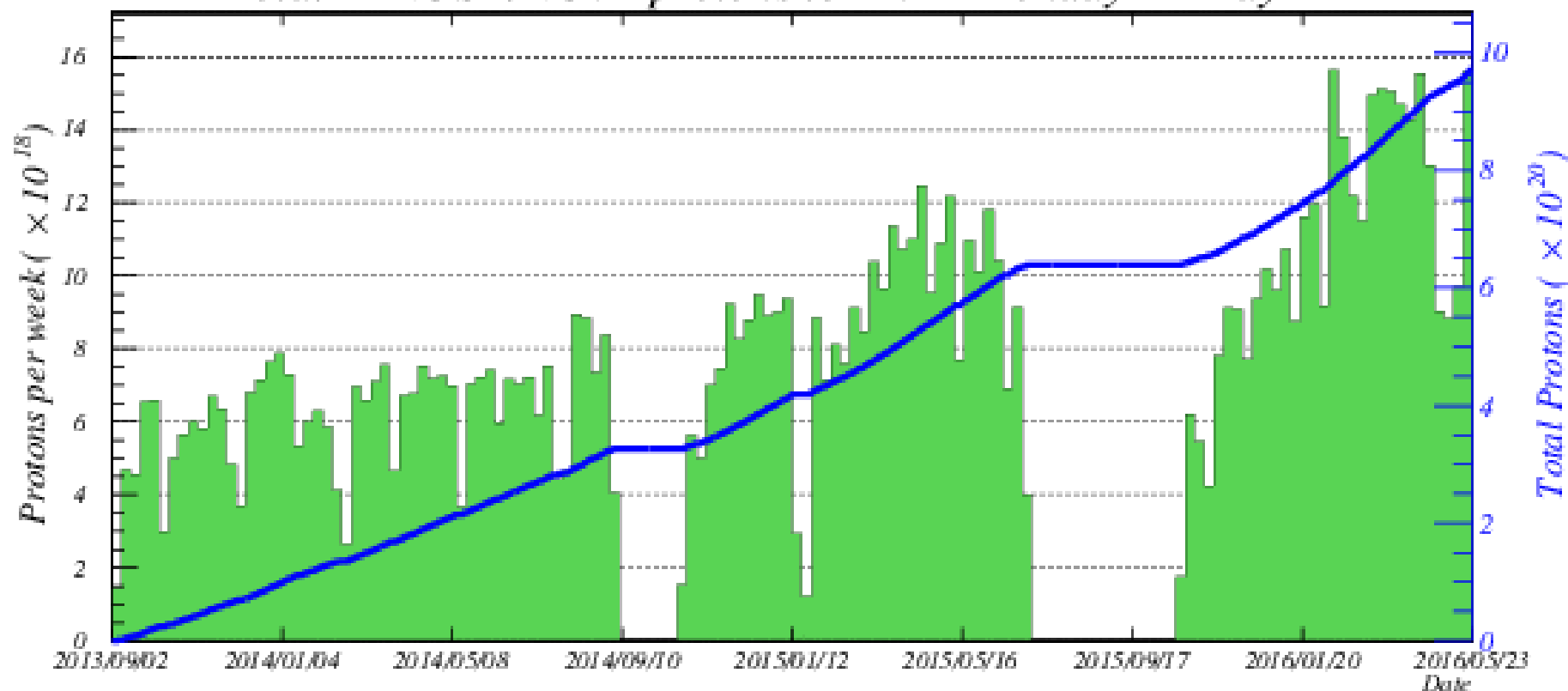
1.56×10^{19} POT
May 16-22, 2016



Protons for ME Run



Total MINOS+/NOvA protons to 00:00 Monday 23 May 2016



97.03×10^{19} POT - Sep 6, 2013 – May 22, 2016