

Top Cap Integration Update

Cryo Camera

Internal Cable Tray

Long Capacitor

Adamo Gendotti

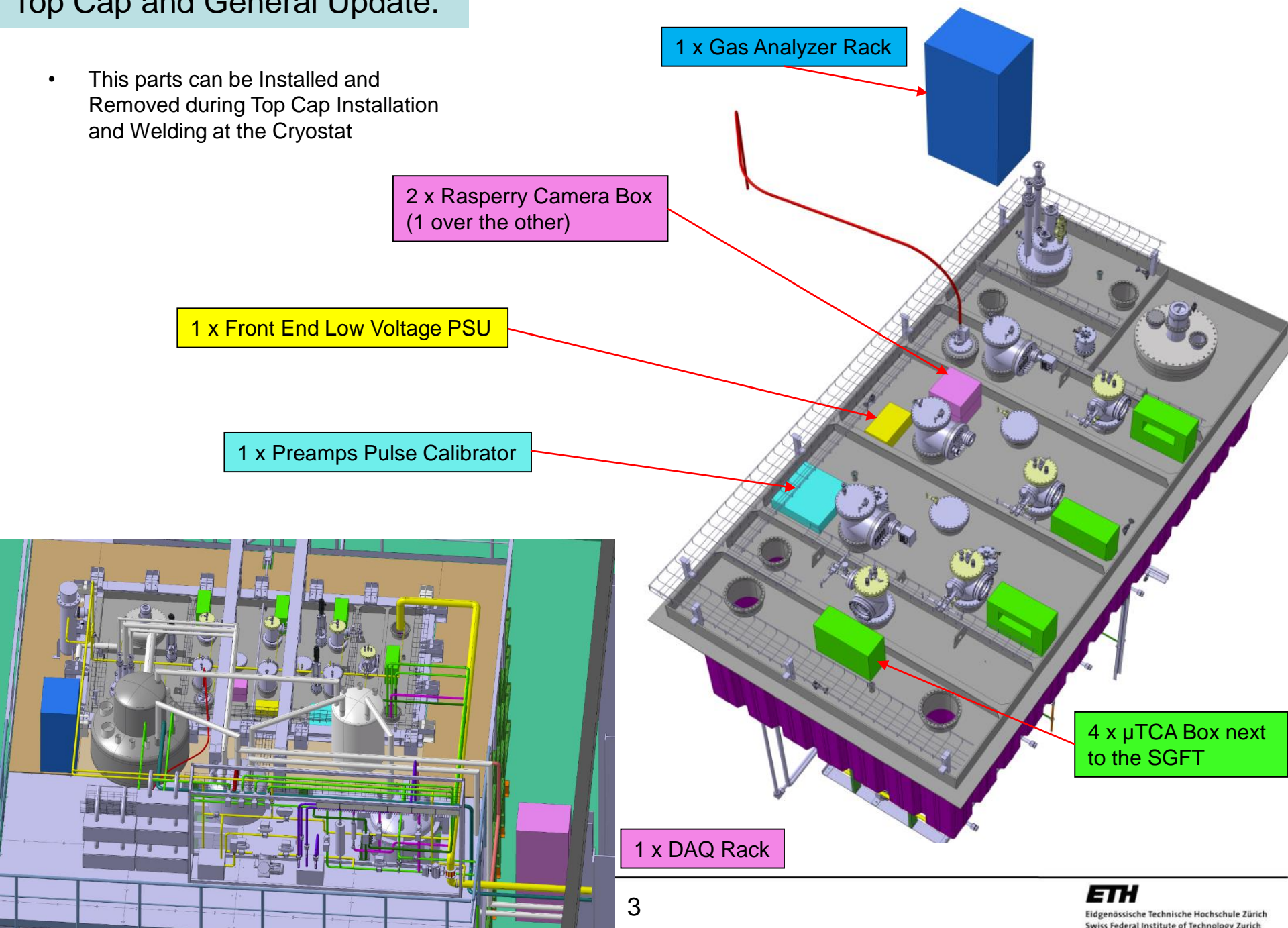
25.05.2016

- Top Cap and General Update:
 - 4 x μ TCA Box next to the SGFT
 - 1 x Preamps Pulse Calibrator
 - 2 x Rasperry Camera Box
 - 1 x Front End Low Voltage PSU
 - 1 x Gas Analyzer Rack
 - 1 x DAQ Rack
 - 2x SGFT Blank Flange updated (for Purity Monitor and additional Ptank measure)
 - 5x CF40 chimneys
 - 1x CF16 chimney

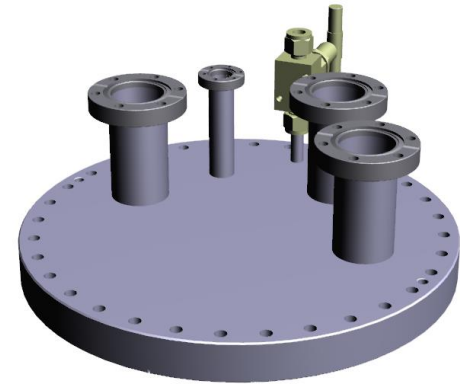
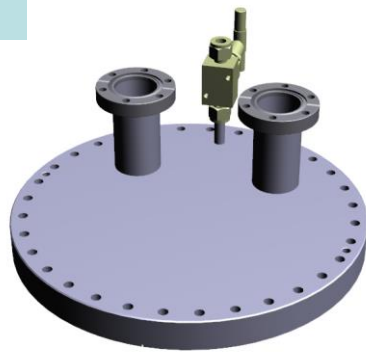
- Inside Cryostat
 - New fixing plates for Drift Cage
 - 1 x Long Capacitor Holder
 - 2 x Vertical Cable Trays (for PMTs Cables, PT Array, Purity monitor Cables)
 - 5 x Cryo Cameras + Holder (3x on Top and 2x on Bottom)
 - 1 x Purity Monitor main Geometry

Top Cap and General Update:

- This parts can be Installed and Removed during Top Cap Installation and Welding at the Cryostat

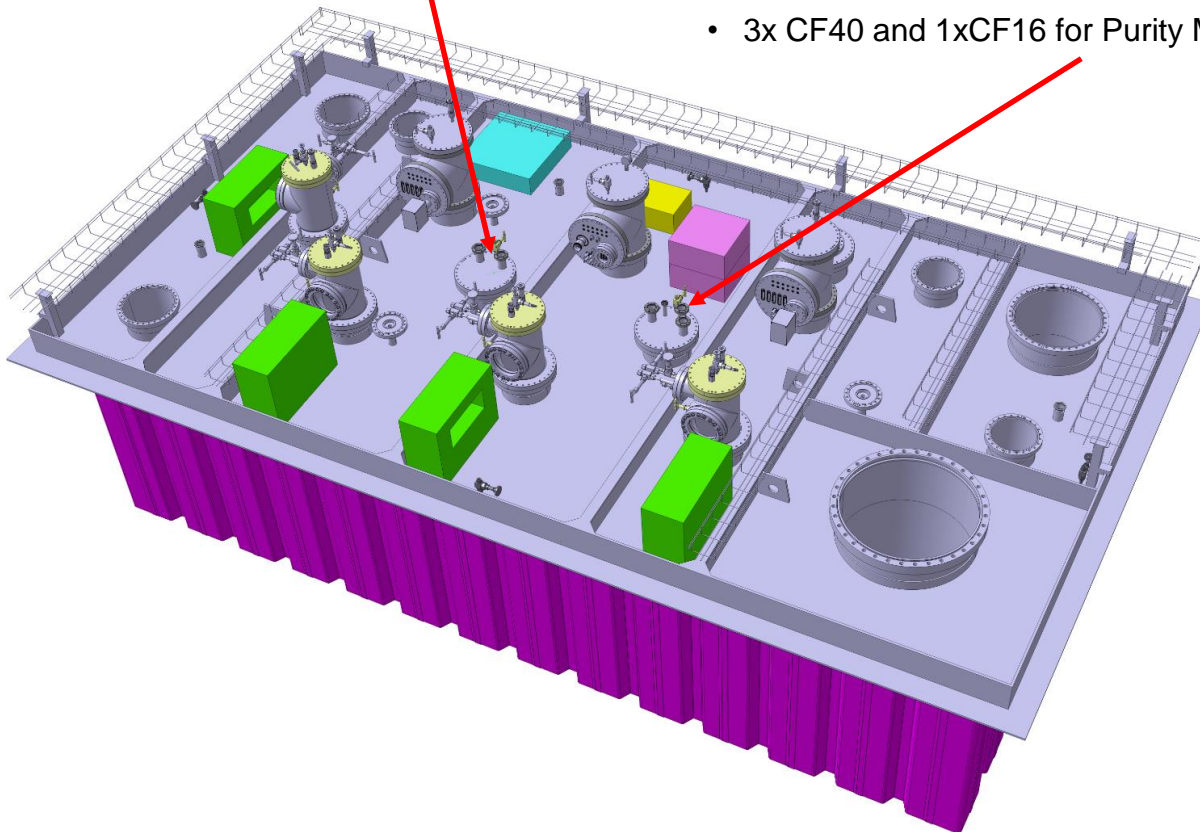


2 x SGFT Blank Flanges:

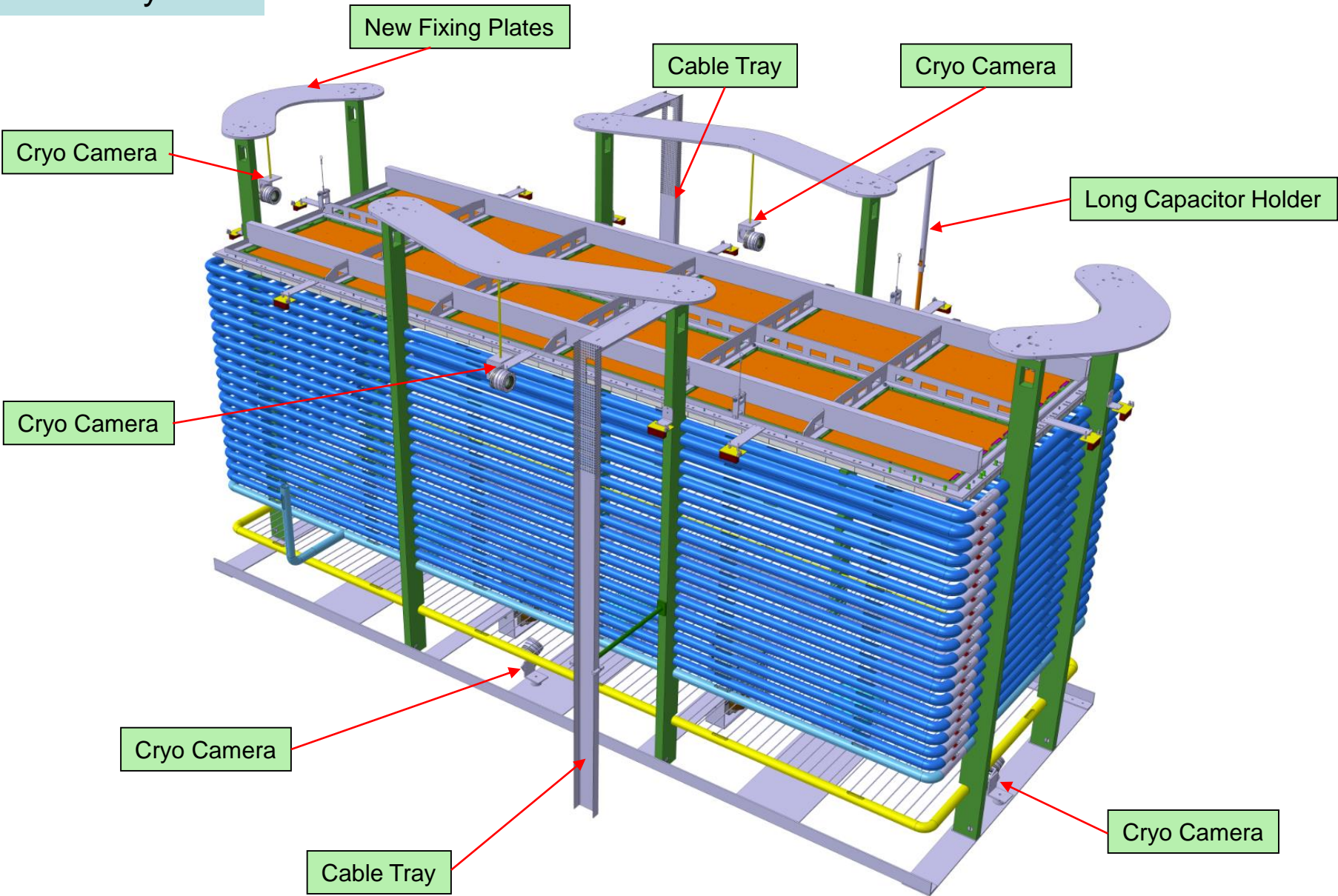


- 2x CF40 for Ptank + spare

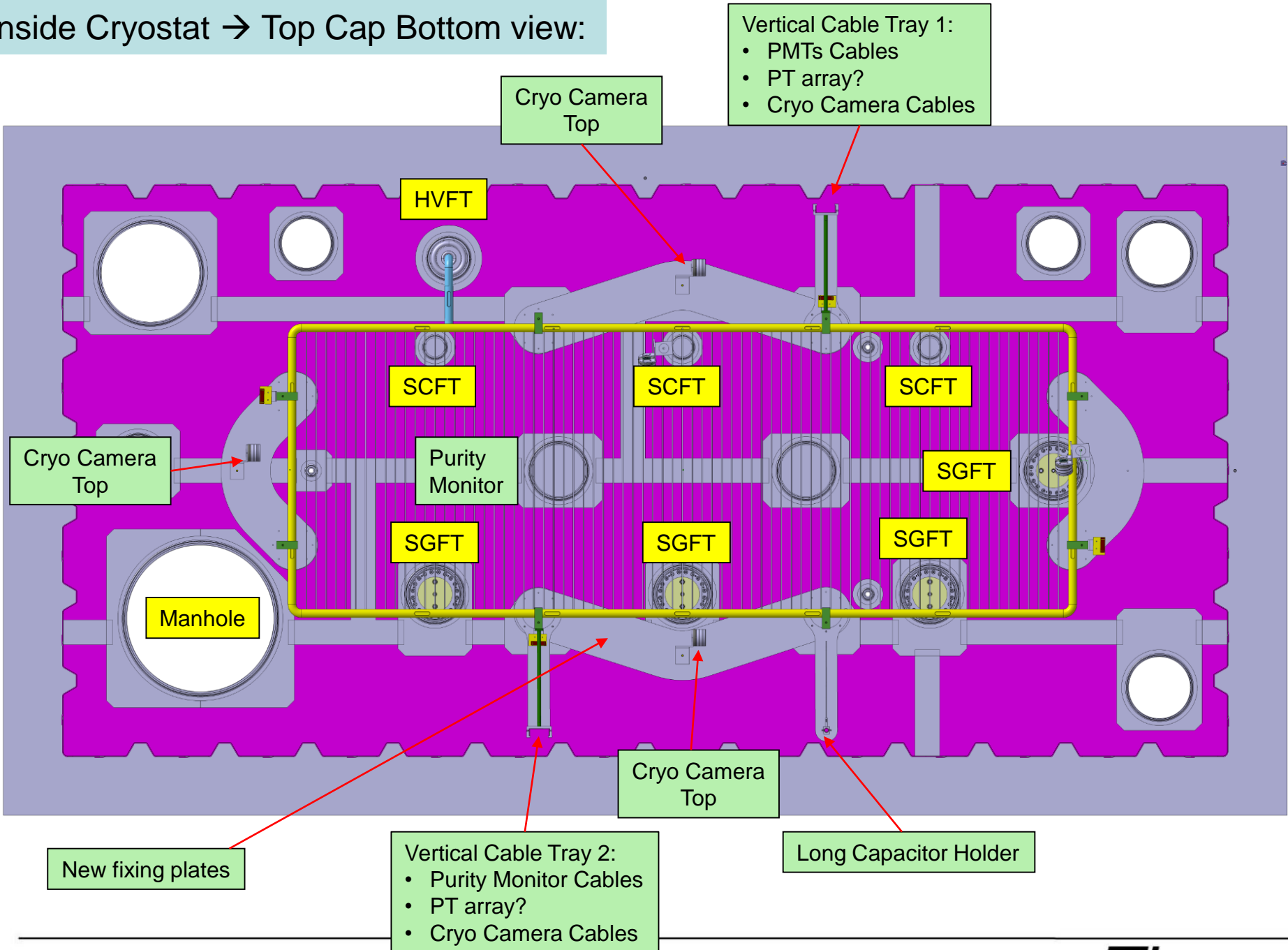
- 3x CF40 and 1xCF16 for Purity Monitor



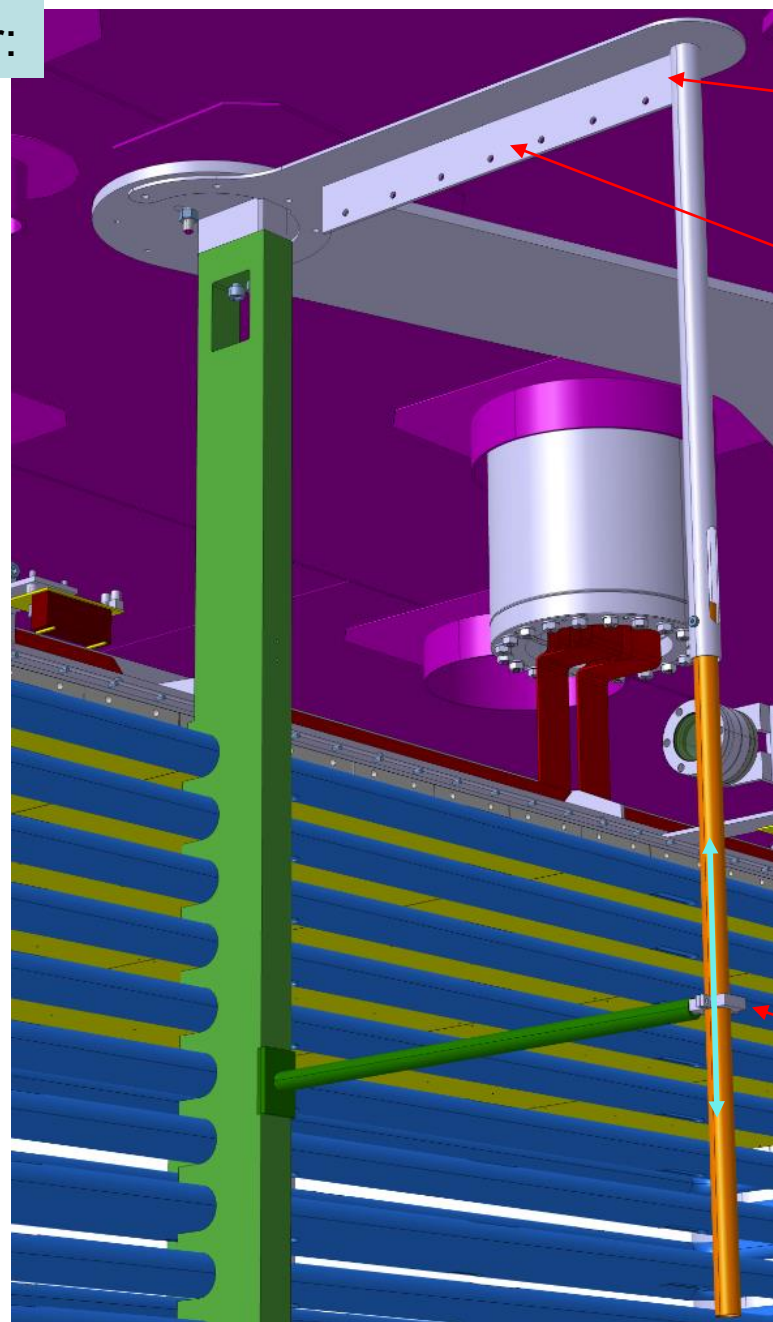
Inside Cryostat:



Inside Cryostat → Top Cap Bottom view:



1 x Long Capacitor Holder:



Horizontal Plate and
Vertical Tube welded
(one part)

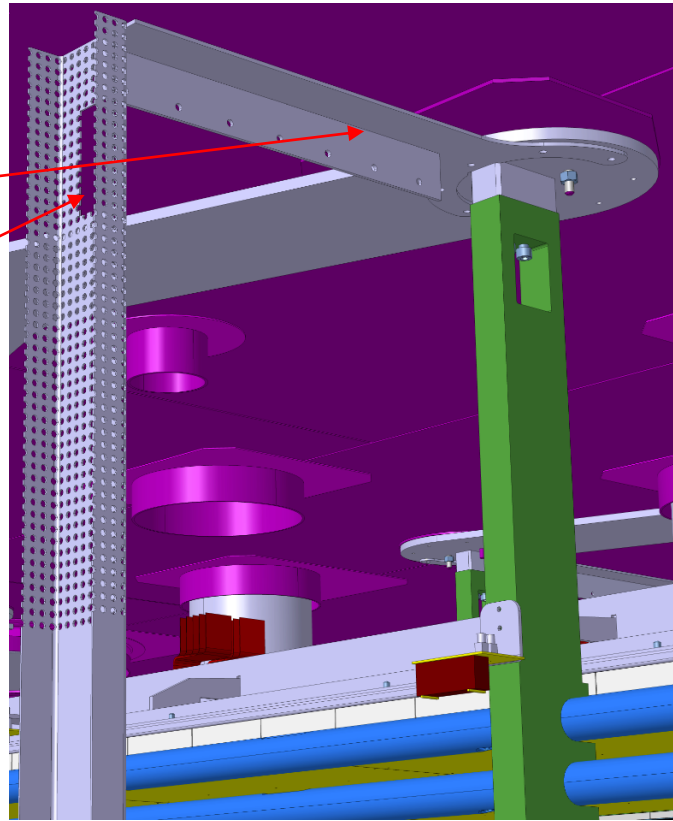
Holes for holding cables

G10 Bottom fixation only
to keep the Distance
(Capacitor can Slide
vertically)

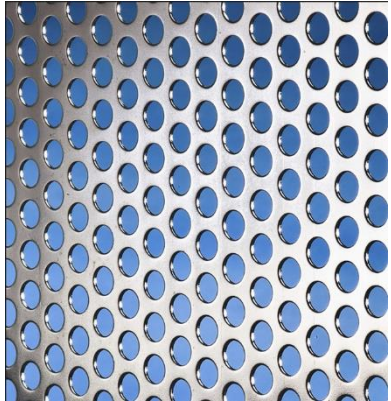
2 x Vertical Cable Trays:

Horizontal Plate and Vertical Cable Trays welded (one part)

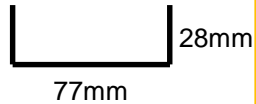
Holes for Cables



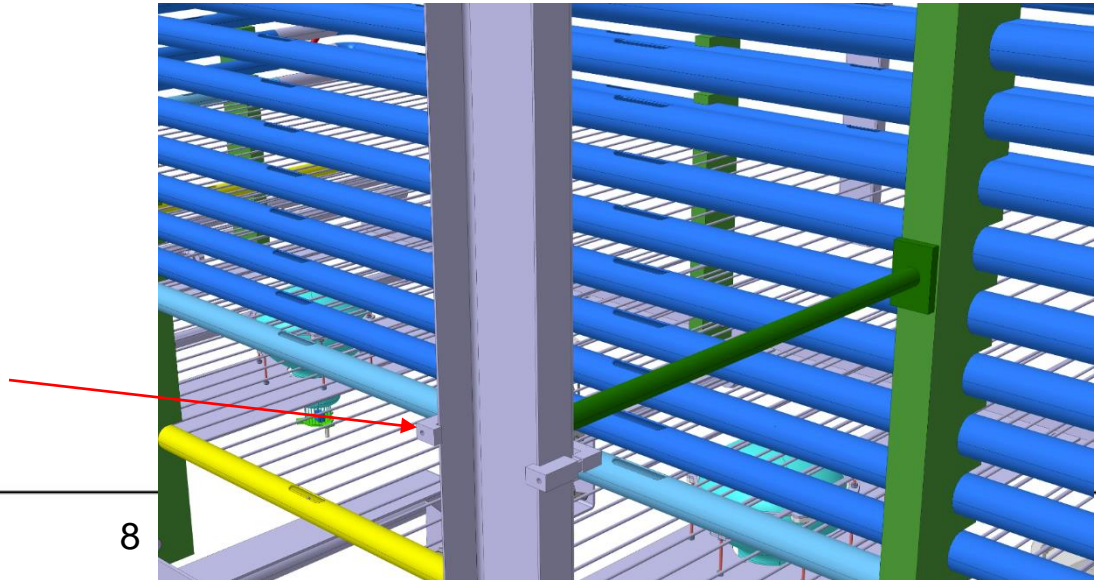
Cable tray is made by SS bored plate



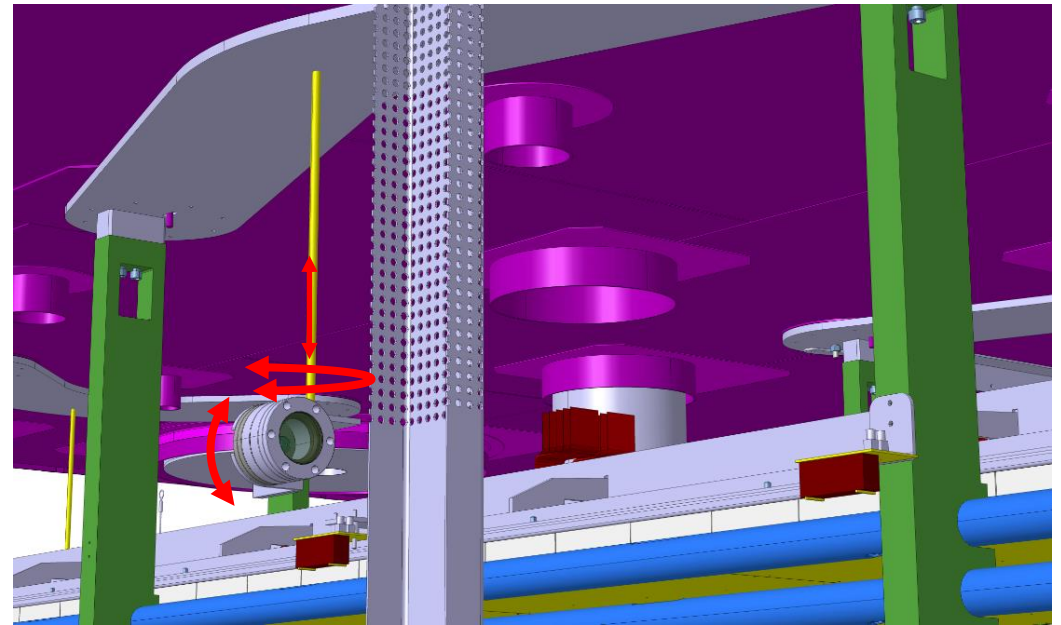
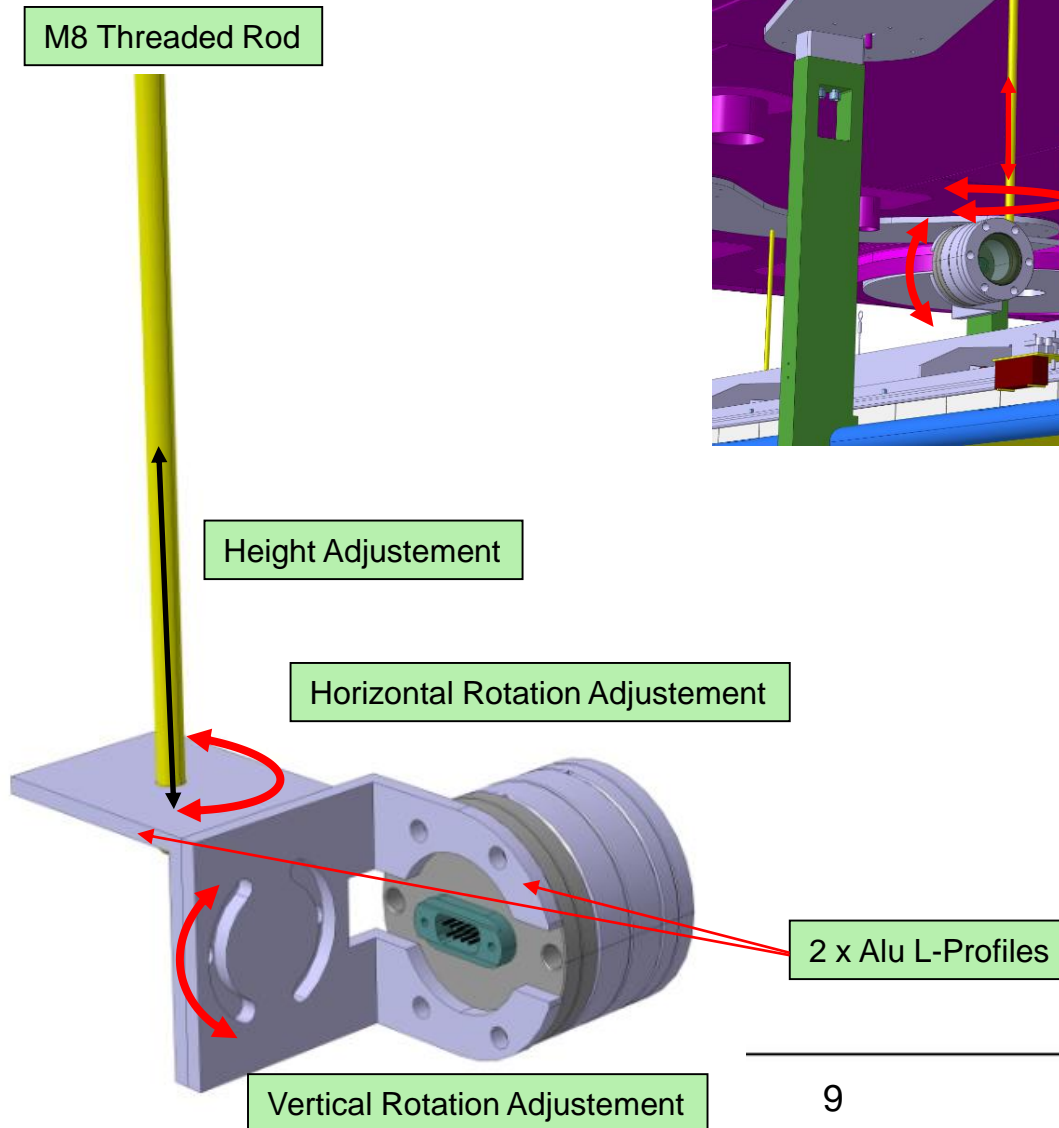
Size Cable tray



G10 Bottom fixation only to keep the Distance (Cable tray can shrink vertically)



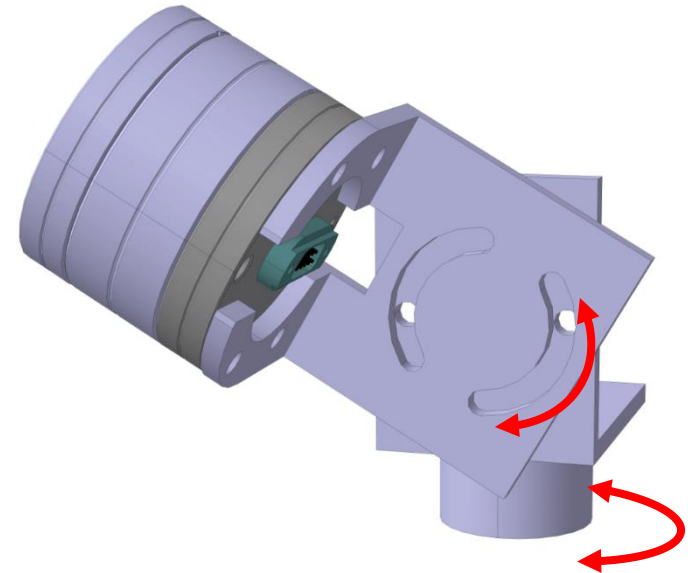
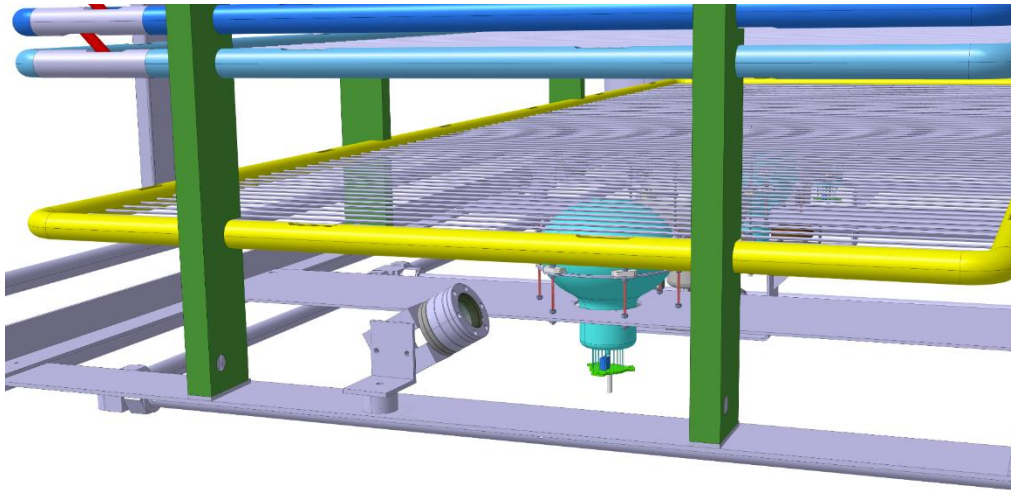
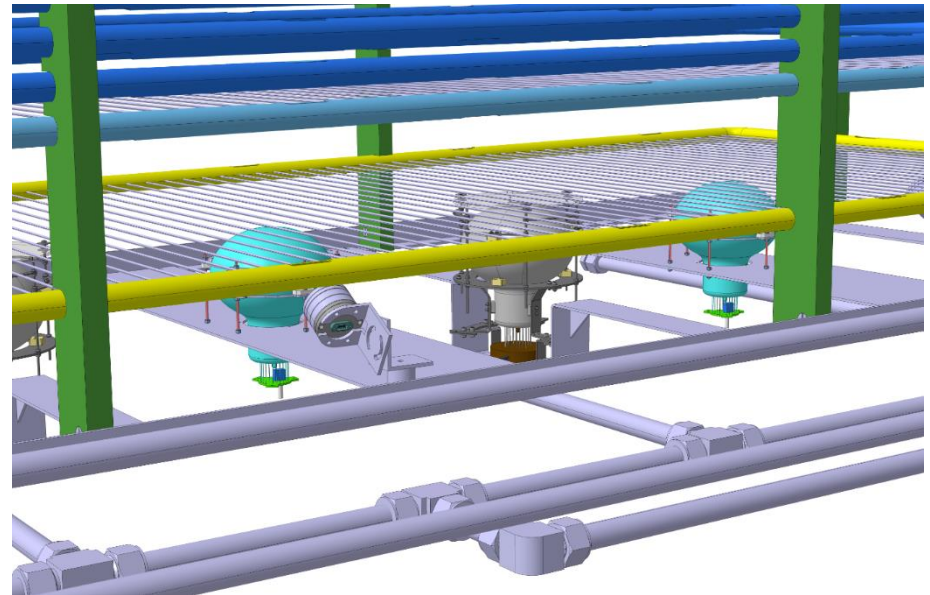
3 x Cryo Camera Holder Top:



- Fix the position → Nut and Locknut will be used

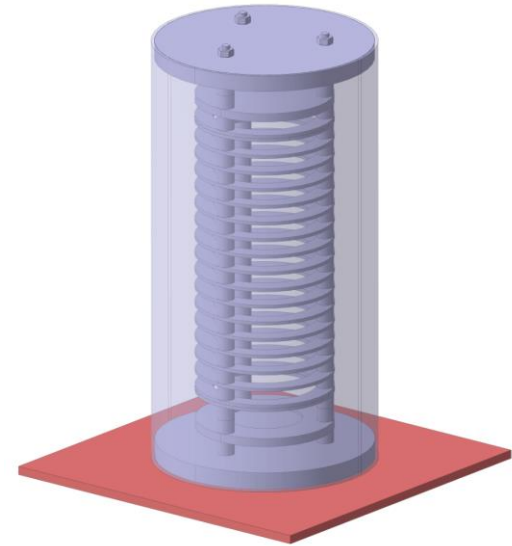
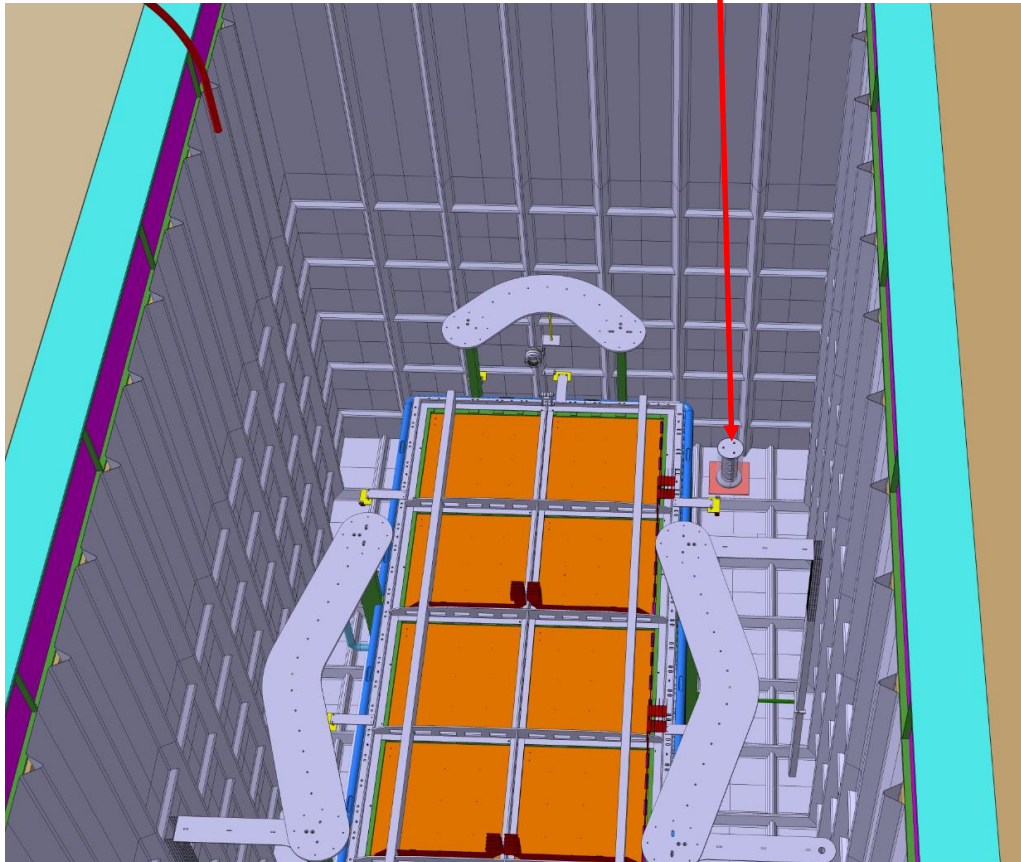
3 x Cryo Camera Holder Bottom:

- Location of the Bottom Camera can be decided later → 8.5mm Dia Hole is necessary on the Bottom Plates of the Driftcage (PMTs Holder)



Purity Monitor:

- Purity Monitor (Main Geometry)
 - placed on the center of a membrane pattern (istalled through the Manhole)
 - near under the Manhole
 - fixed with point glue at the membrane (same as for the PMTs in the 6x6x6)



- Outside Cryostat:

- 2x SGFT Blank Flange updated (for Purity Monitor and additional Ptank measure)

- 5x CF40 chimneys
 - 1x CF16 chimney

- 2 CF 250 arrived at CERN

- Need to order missing CF flanges and give to ETH workshop for welding

- Estimated time 20 June

- Inside Cryostat

- New fixing plates for Drift Cage

- 1 x Long Capacitor Holder

- 2 x Vertical Cable Trays (for PMTs Cables, PT Array, Purity monitor Cables)

- 5 x Cryo Cameras holder (3x on Top and 2x on Bottom)

→ Ready middle of next week

→ Ready the week of 13 June

- 1 x Purity Monitor main Geometry