

NOvA Experiment Status

All Experimenter's Meeting

Jaroslav Zalesak, FNAL/Institute of Physics, Prague

Jun 13, 2016

Operations – Summary



□ BEAM:

- Waiting for 700kW with 6+6 slip stacking and antineutrino run.

□ NearDet:

- A couple short DAQ issues occurred.
- Preparing for the maintenance and planning of noise lowering to make the RHC data taking as much effective as possible.

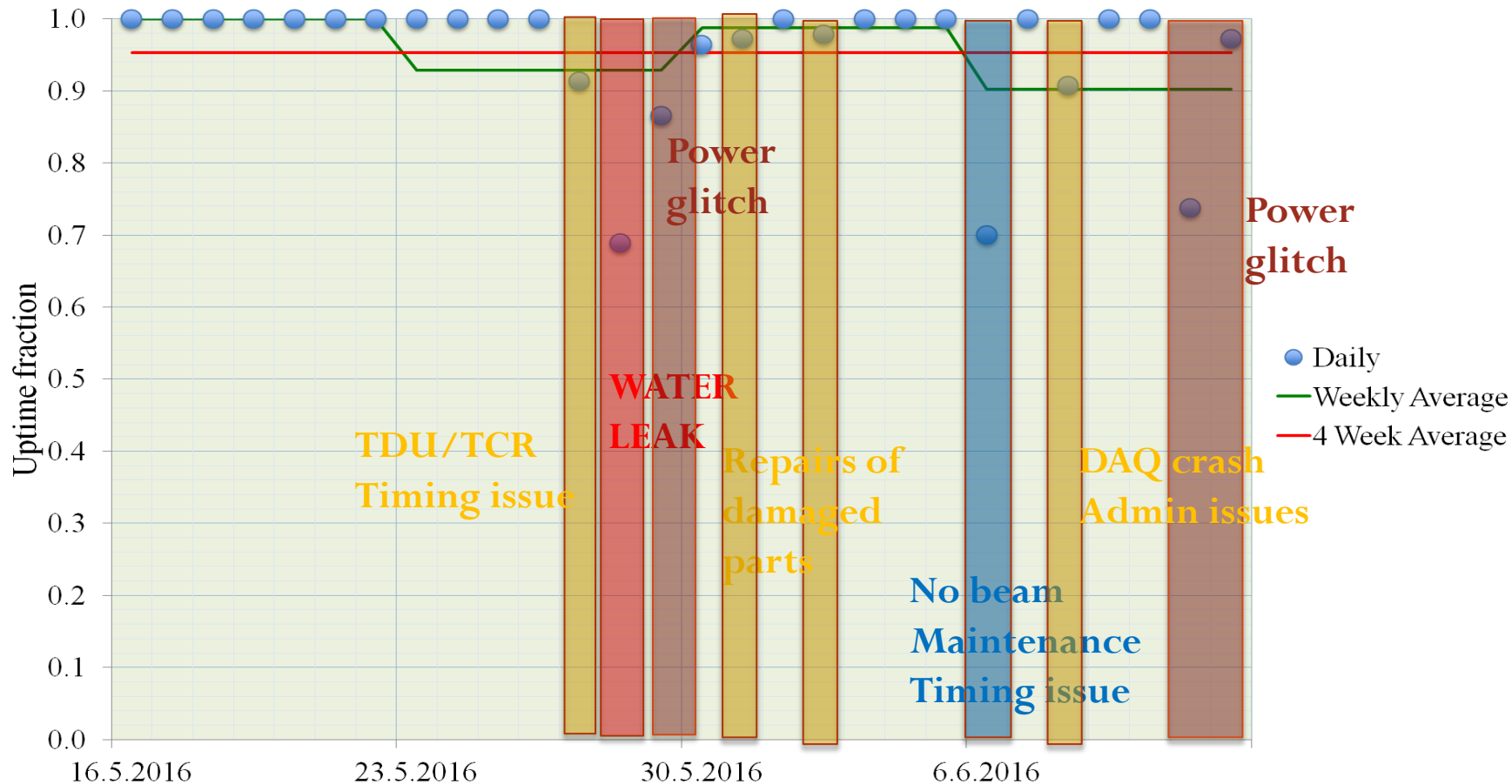
□ FarDet:

- **Another power glitch!**
- Maintenance performed during beam downtime.
- We lost some computing permission causing non-uniform performance of the data treatment.

□ Collaboration: many analysis on recent data going to their ends, depending on them we will ask NHC vs RHC running next FY.

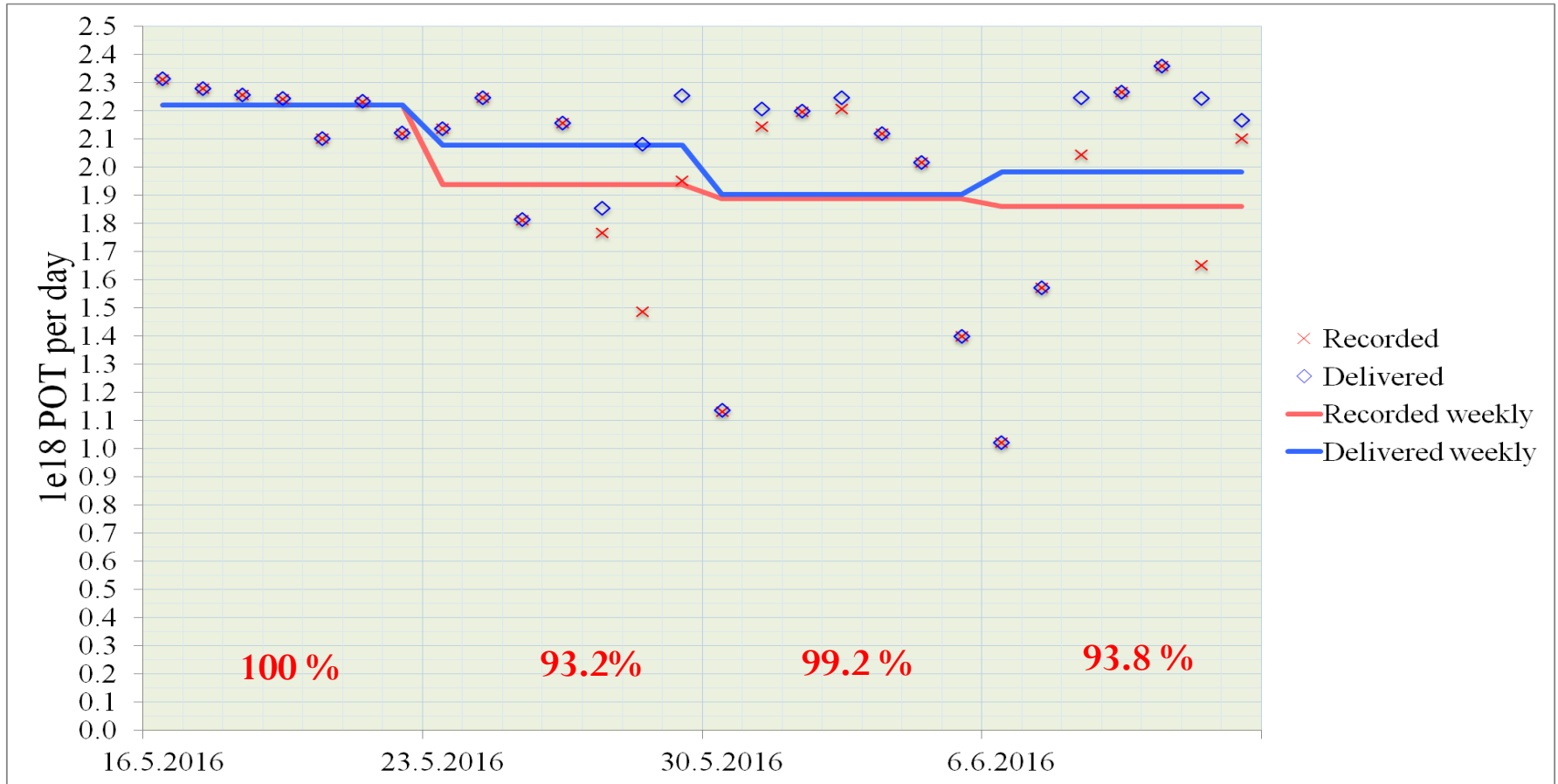
- Discussion on beam summer shutdown tasks.

FD: Data taking Uptime



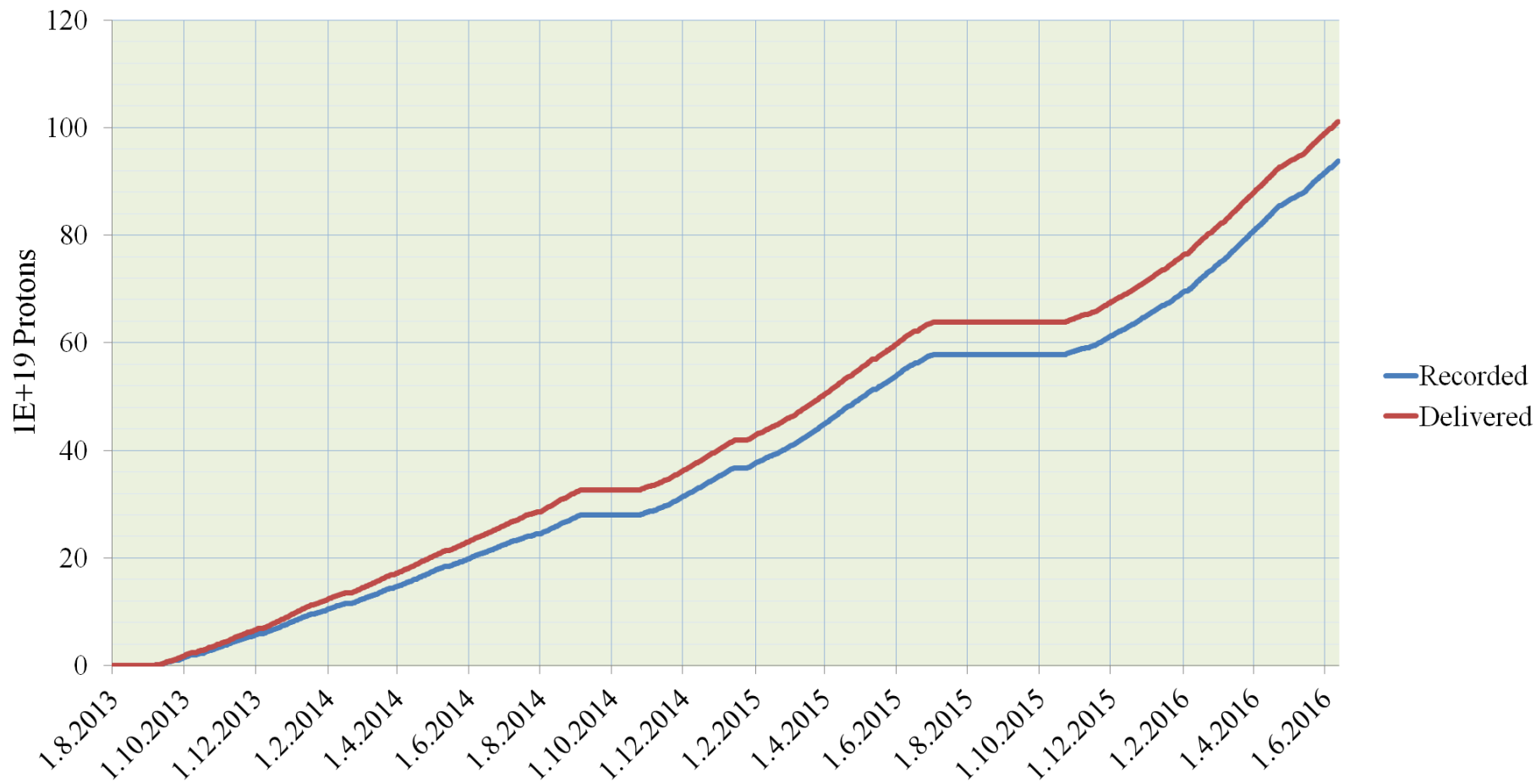
- 90.3%,(4w 95.4%), 7h of 16 hours when beam down – maintenance on Mon
- DAQ (Wed)crashed and during recovery due to computing privileges changes we ran into issue with uniform load of buffer nodes' CPUs computing DDT (no NuMI)trigger data .
- Another power glitch happened on Sat, its recovery cost 6+ hours.
- Also we observed some issue with our timing system, some glitch caused time 1 day off.

FD: POTs delivered/recorded



- 4week average 96.6%, last weeks we took 13.02 of 13.88 e18 POTs.
- Since second analysis cut-off we took 75e18 POTs more.
- Big beam losses correspond mainly to the power glitch on Sat at Ash River site.

FD: Accumulated POTs – all years



➤ **FY2014:** 280/326 e18 POTs (86%) + **FY2015:** 298.5/312.5* e18 POTs (95.5%) [253days]

➤ **FY2016:** 359.2/373.1 e18 POTs (96.3%) [252 days]

**) Including 20.8e18 POTs horn-off data and 2.6e18 non-nominal horn current data.*

➤ **Total beam exposure of FD reached 1.012 e21 POTs (not weighted, all in NHC).**