



MINOS+ All Experimenters' Meeting Report

A.P. Schreckenberger
2016-6-20

Detector Issues

▶ FD Issues

- ▶ Fan pack alarm – cleared swiftly
- ▶ CI special run during beam downtime

▶ ND likes to be loud

- ▶ A few DAQ crashes recovered via reset
- ▶ One minder had all menus with CAPID errors on 15th
 - ▶ New run + branch reset cleared minder of error state
- ▶ Still seeing intermittent LI issue that is driving down livetimes



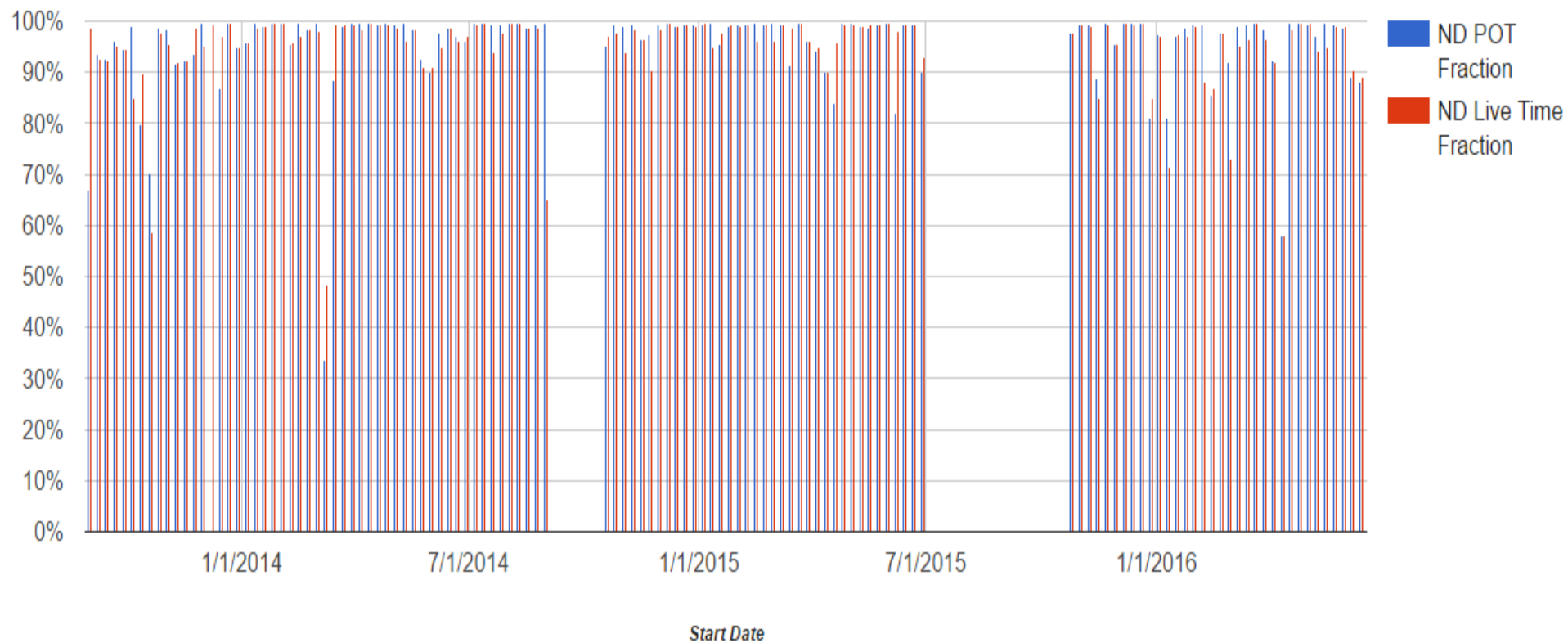
MINOS+ Status

Start Date/Time	End Date/Time	Near Detector		Far Detector	
		POT Fraction	Live Time Fraction	POT Fraction	Live Time Fraction
4/18/16 00:00:00	4/25/16 00:00:00	99.6%	98.3%	99.4%	99.5%
4/25/16 00:00:00	5/2/16 00:00:00	99.6%	99.7%	98.0%	98.0%
5/2/16 00:00:00	5/9/16 00:00:00	99.5%	99.6%	94.0%	93.8%
5/9/16 00:00:00	5/16/16 00:00:00	97.0%	94.3%	99.9%	99.5%
5/16/16 00:00:00	5/23/16 00:00:00	94.4%	94.6%	99.8%	99.9%
5/23/16 00:00:00	5/30/16 00:00:00	99.5%	99.0%	99.9%	99.5%
5/30/16 00:00:00	6/6/16 00:00:00	98.8%	99.0%	94.0%	93.8%
6/6/16 00:00:00	6/13/16 00:00:00	89.2%	90.5%	99.9%	99.4%
6/13/16 00:00:00	6/20/16 00:00:00	88.3%	89.0%	99.7%	99.7%

Bold: LI Issue ND

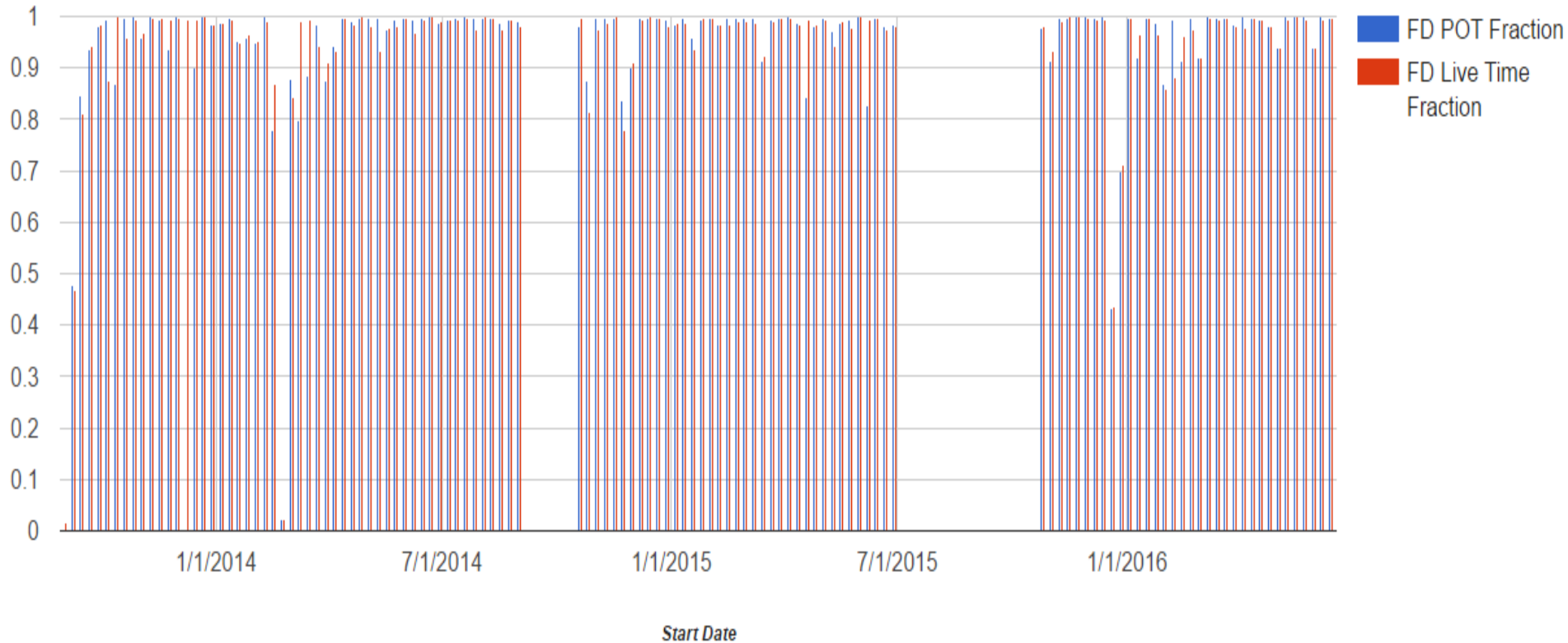
ND Status

ND POT fraction and Live Time Fraction



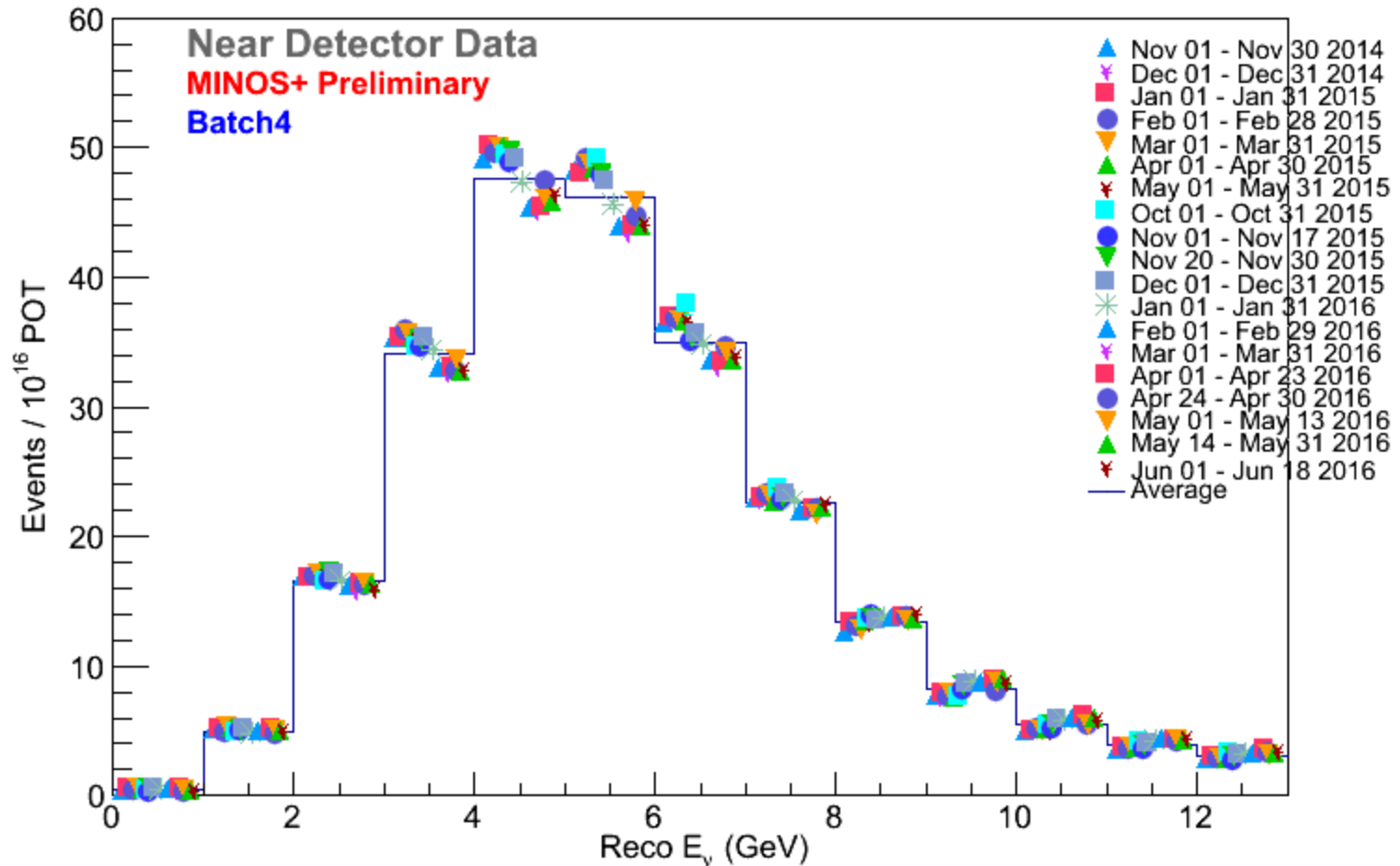
FD Status

FD POT Fraction and Live Time Fraction



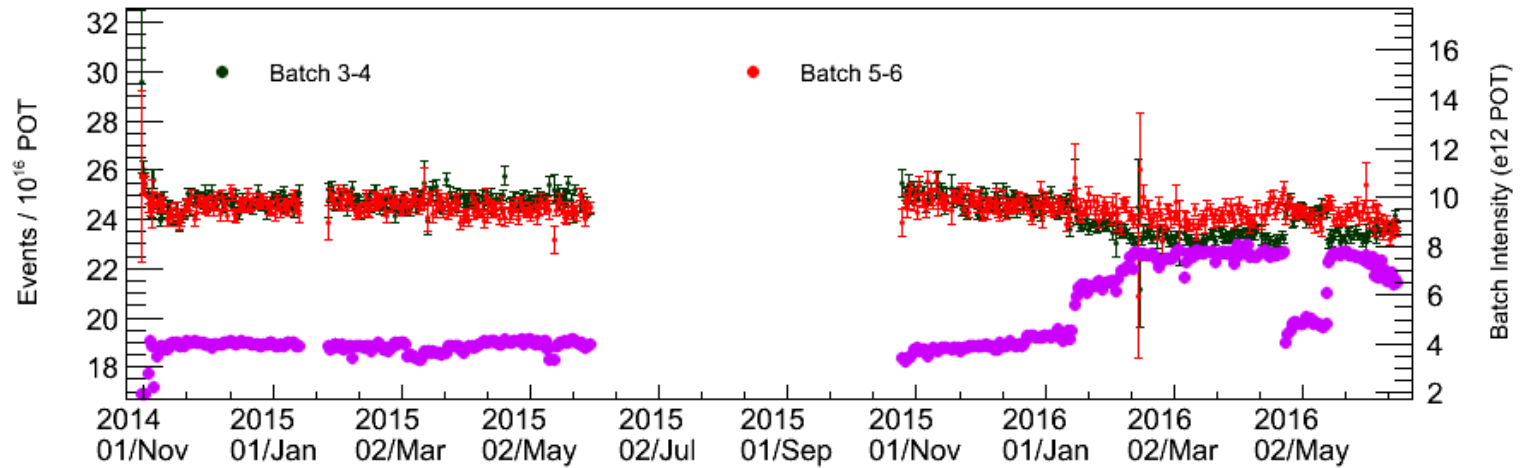
Spectrum Stability Batch 4

Neutrino Selected Batch Energy Spectrum Stability (PQ and NQ)

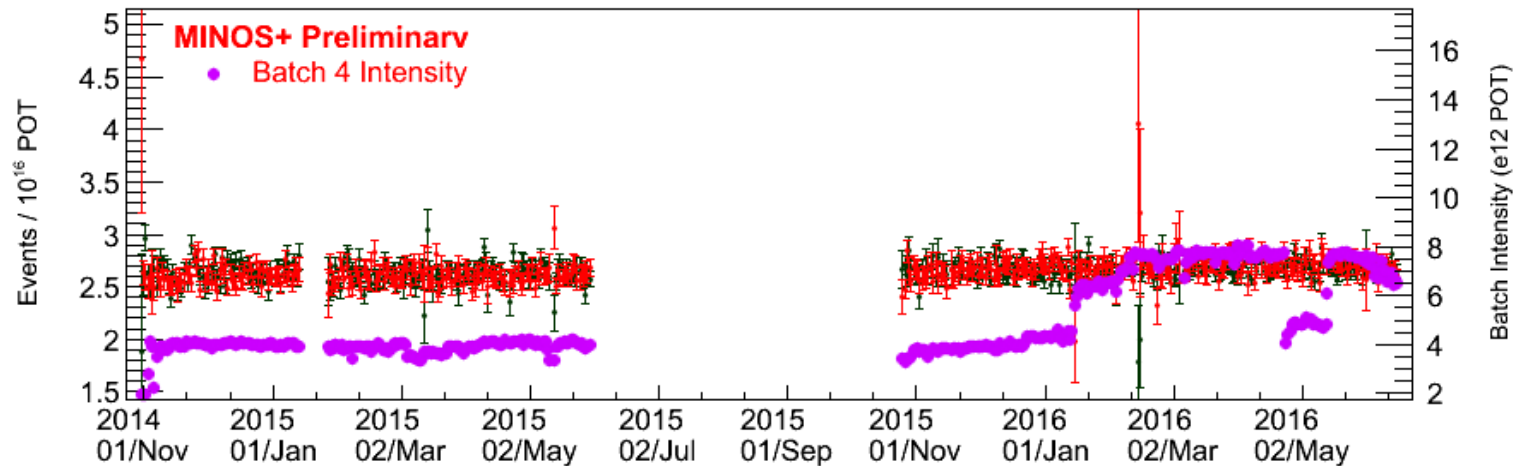


Events/POT vs Time

Neutrino Events Per POT v.s. Time ($E_{\nu} < 14$ GeV)

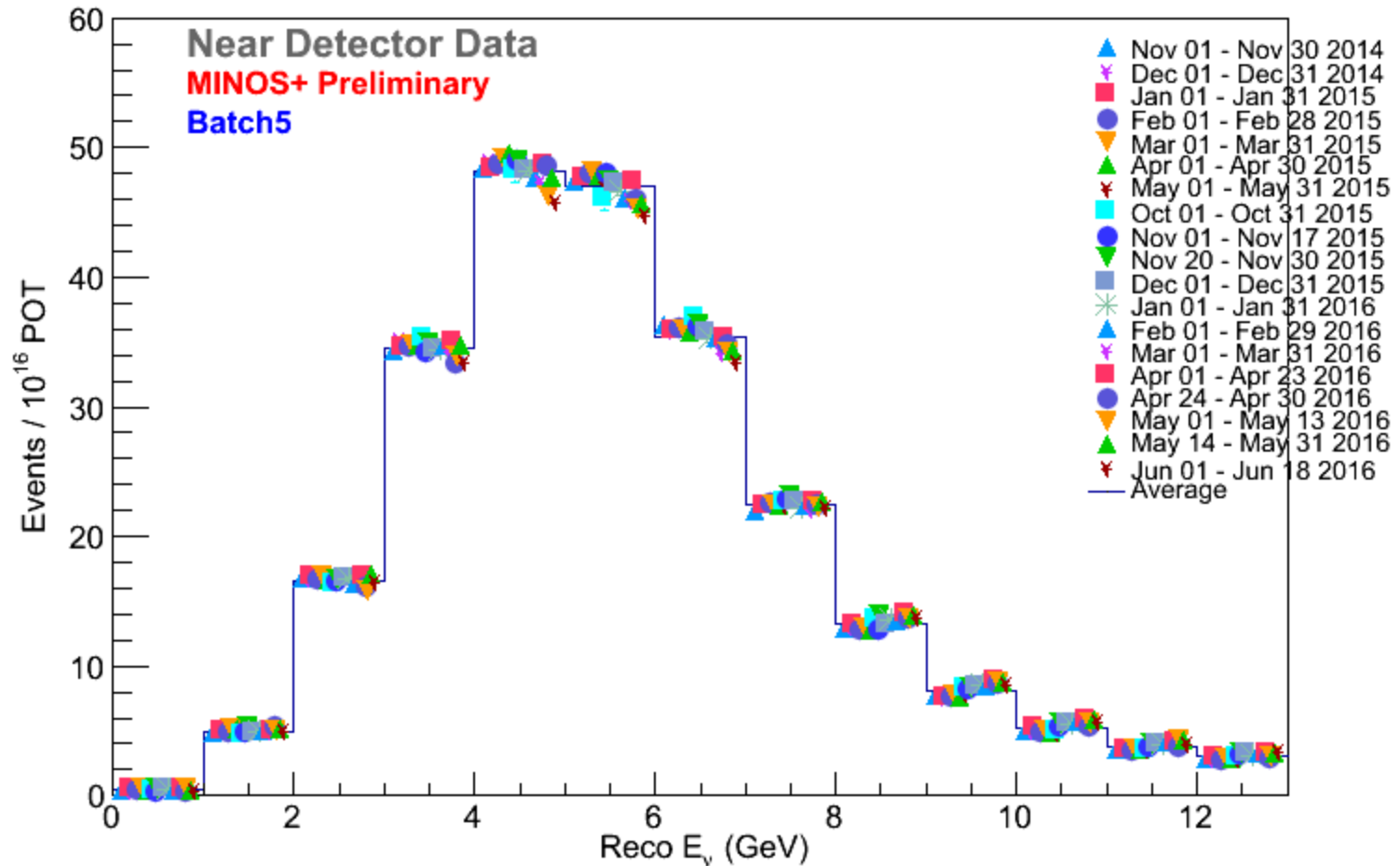


Neutrino Events Per POT v.s. Time ($E_{\nu} > 14$ GeV)



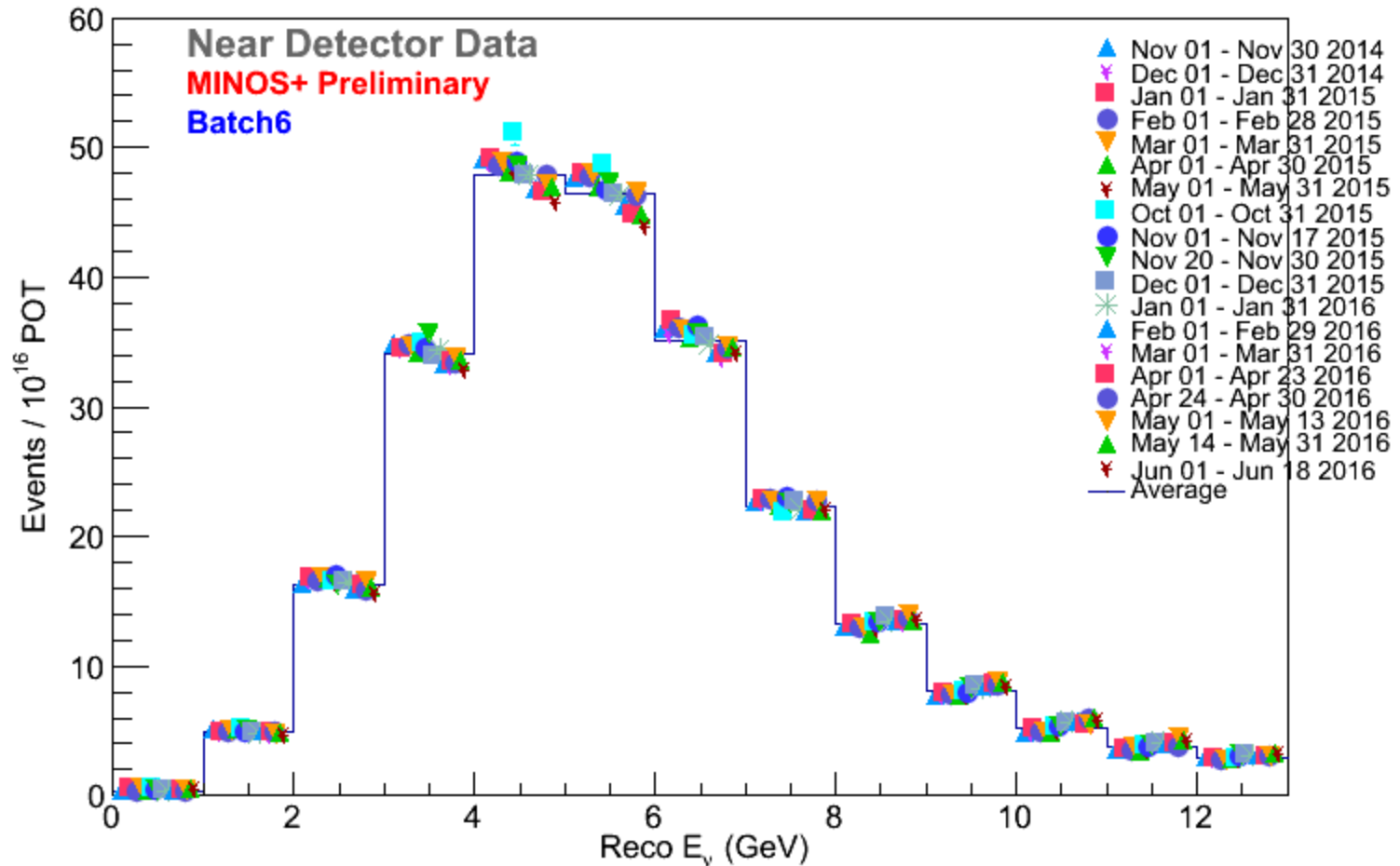
Spectrum Stability Batch 5

Neutrino Selected Batch Energy Spectrum Stability (PQ and NQ)

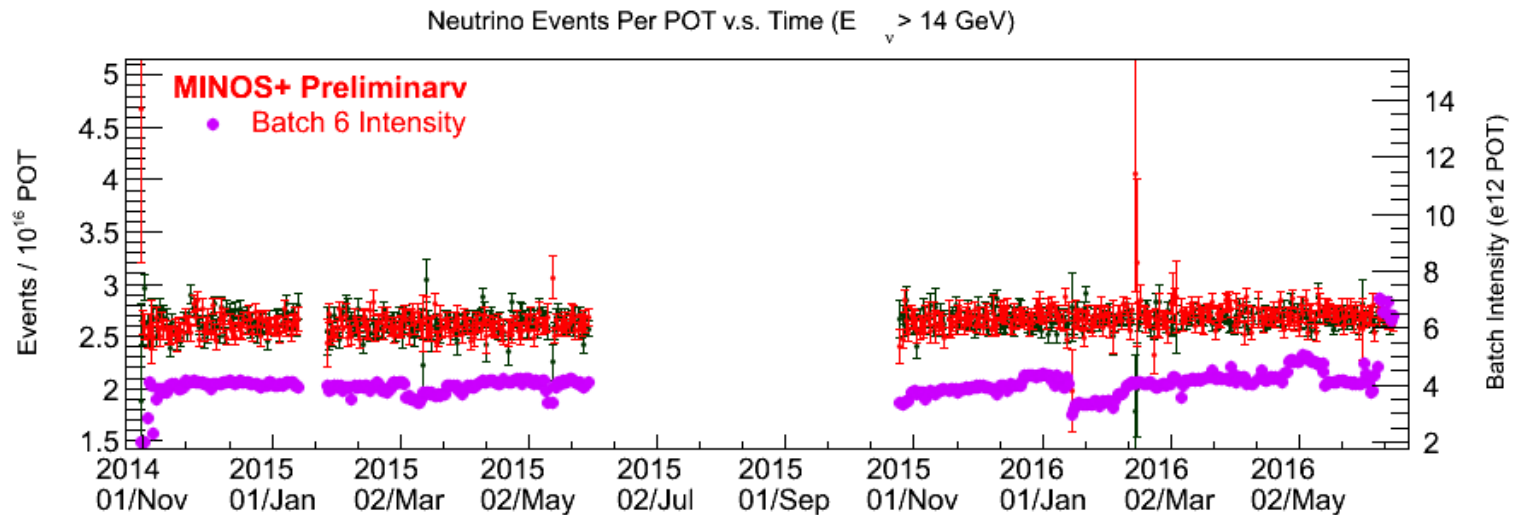
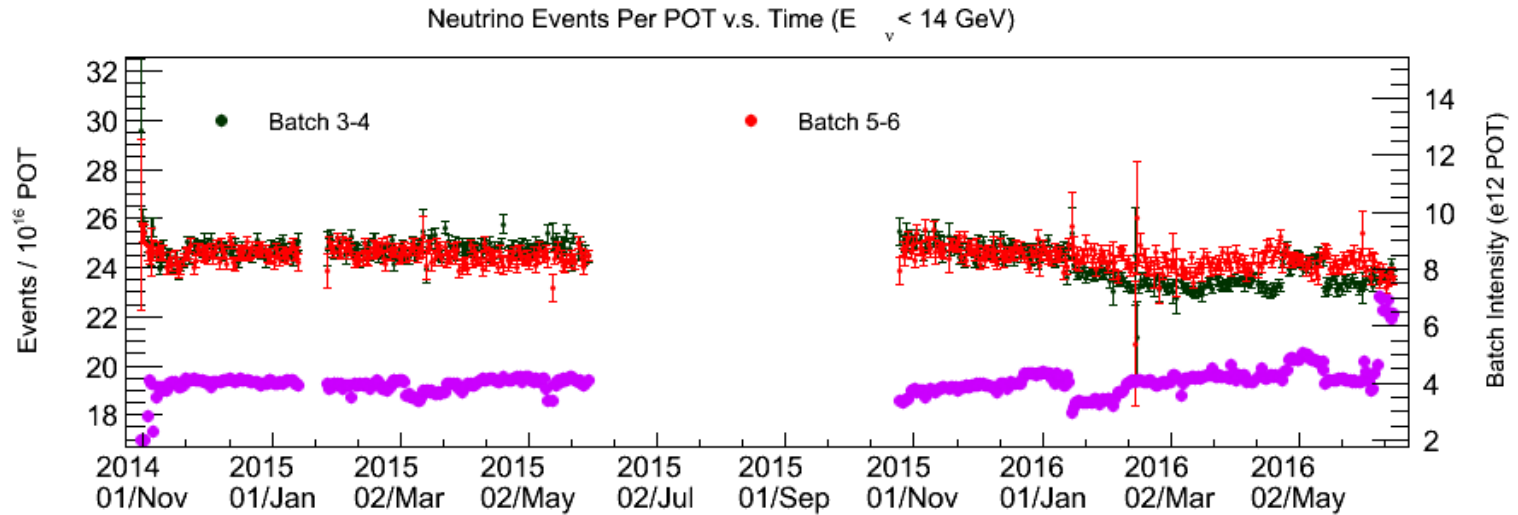


Spectrum Stability Batch 6

Neutrino Selected Batch Energy Spectrum Stability (PQ and NQ)



Events/POT vs Time



Spectrum by Batch!

- ▶ <http://minos.fnal.gov/DataQuality/BatchPage.php>
- ▶ Look, it's a link.
 - ▶ The same one from before, yet now with updated things...