

NOvA Operations Status

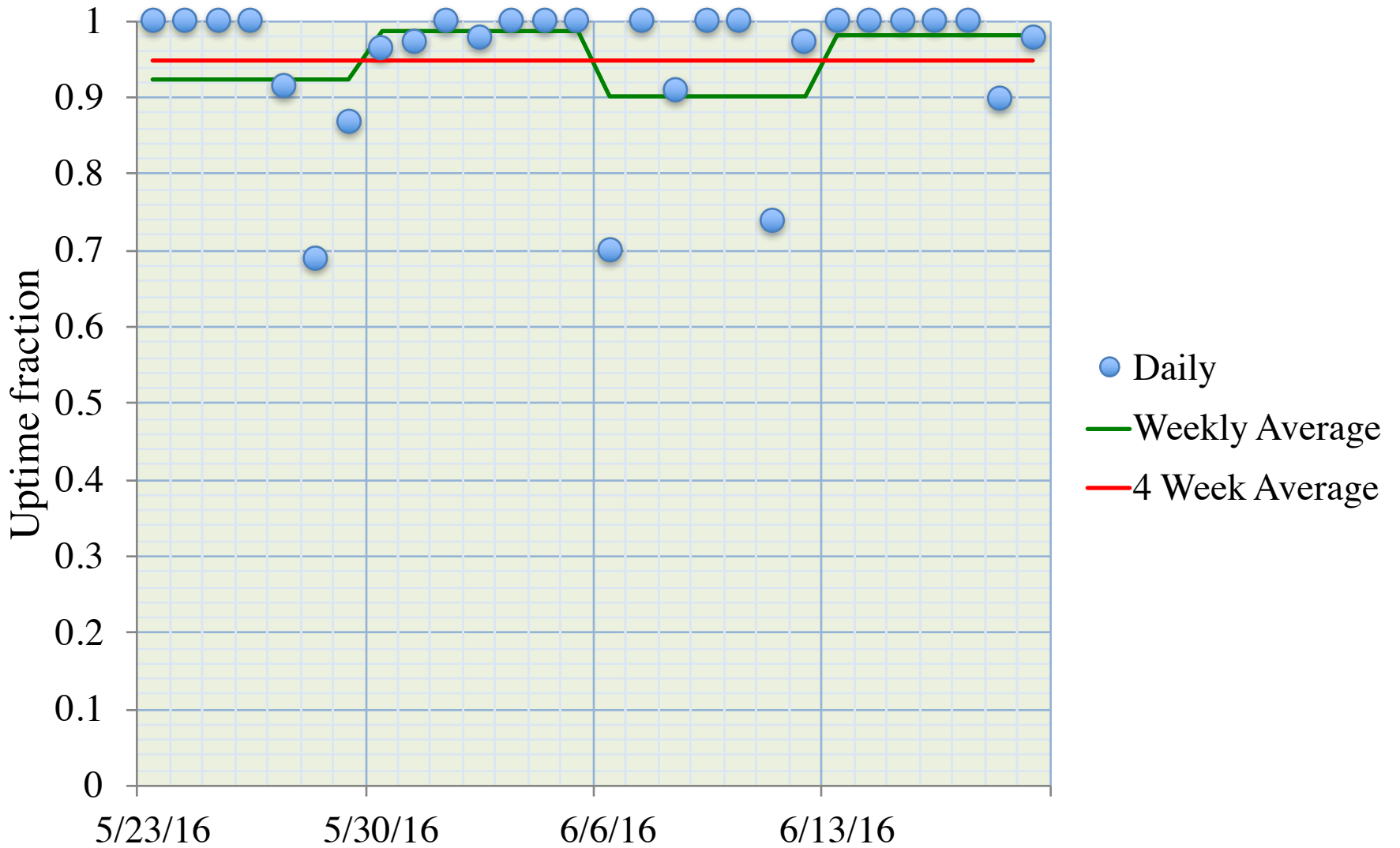
Evan Niner

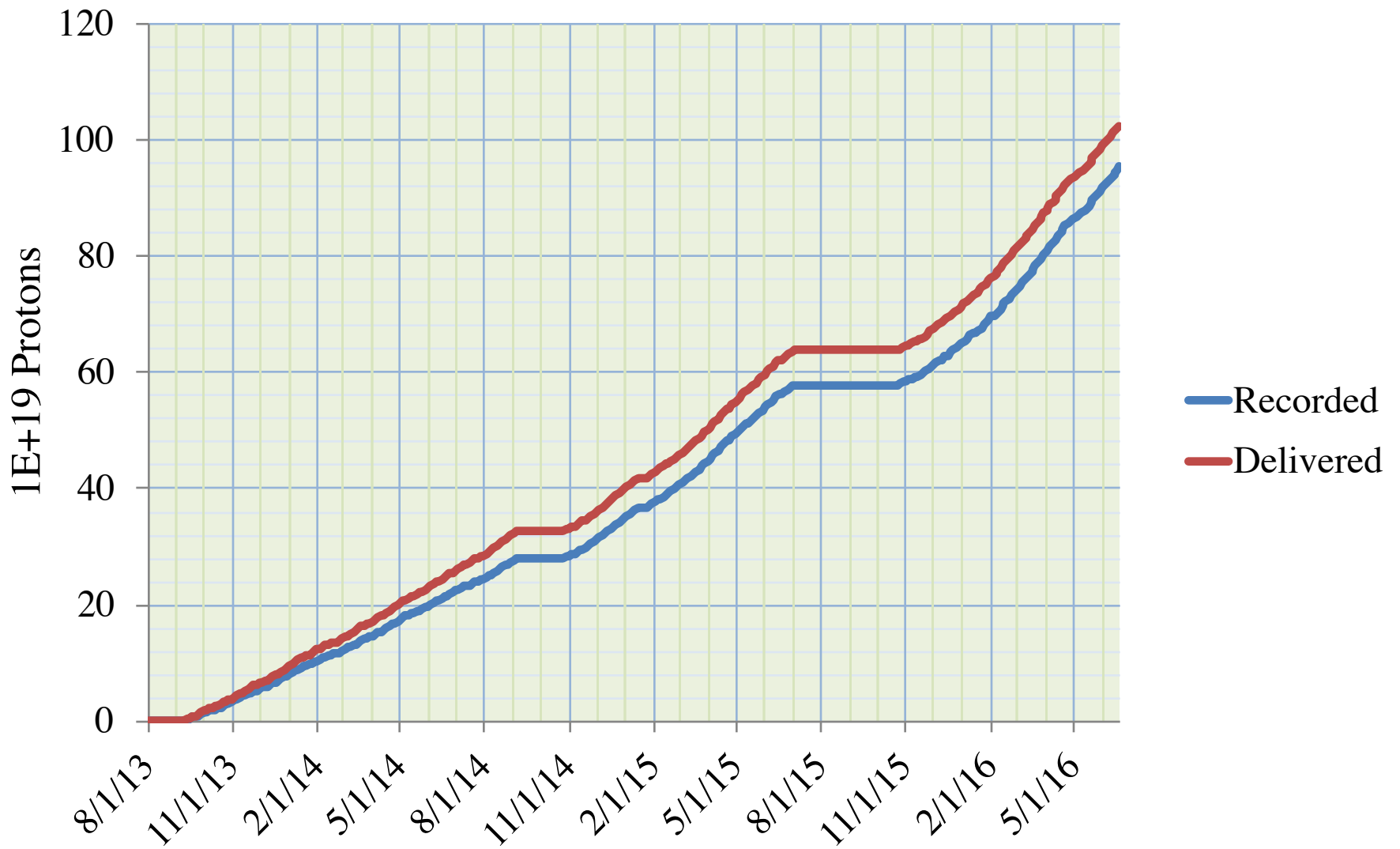
6/20/16

Far Detector

- 98% uptime last week, 96% beam-weighted uptime past month.
- Spill server had a GPS issue on 6/14, sending triggers multiple times (at 10's of Hz). Shifter noticed after ~5 hours. Spill server reset and problem resolved.
- One crash due to data logger.
- One power bump at Ash River caused buffer computing farm to reboot. Cooling stayed up, run restarted.

FD Uptime





3.74e20 POT out of 3.89e20 POT (96%) recorded in FY2016.
 2.99e20 POT / 3.12e20 POT (96%) FY2015.
 2.80e20 POT / 3.26e20 POT (86%) FY2014.

Near Detector

- Effected by same spill server issue on 6/14.
- No other downtimes.

- Primarily user computing this week, focused on Feldman-Cousins calculations.
- Experimenting with running this on the OSG, leading to more failures.

Average Jobs Running Concurrently

3705

Total Jobs Run

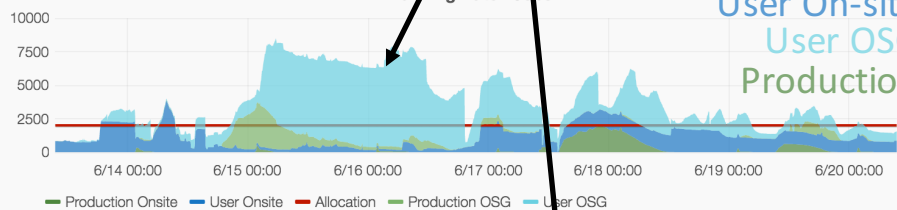
67202

Average Time Spent Waiting in Queue (Production)

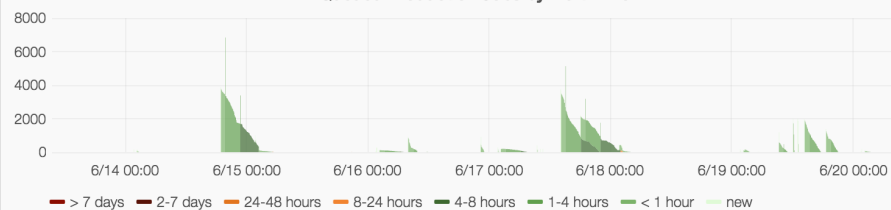
1.902 hour

Running Batch Jobs

User On-site
User OSG
Production



Queued Production Jobs by Wait Time



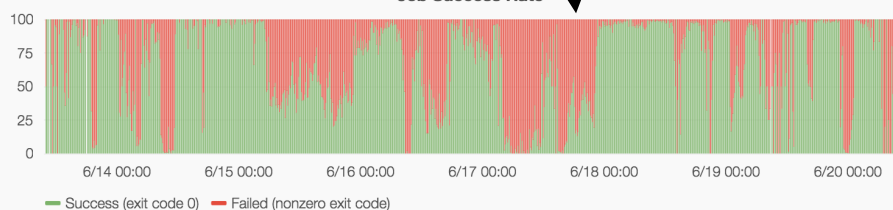
Total Jobs Failed (nonzero exit code)

41797

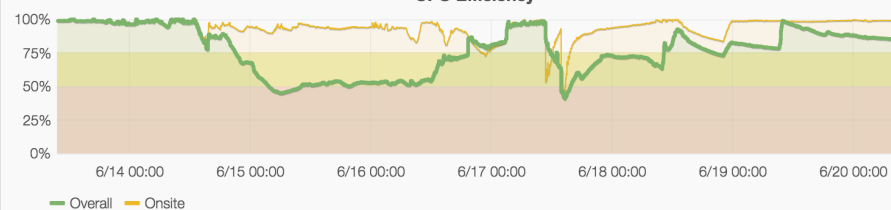
Average CPU Efficiency

74.1%

Job Success Rate



CPU Efficiency



New Data Cataloged

45.1 TB

Total Data Cataloged

7.0 PB

Plans for 6/29

- Will perform FD maintenance next week during down day.
- Assuming we come up in anti-neutrino mode from down day, will power off Near Detector and due maintenance on 6/27.
- Turning the ND off for a day will let the APDs settle into a lower noise level, do it two days in advance to allow recovery.