



# MicroBooNE Status

Athula Wickremasinghe

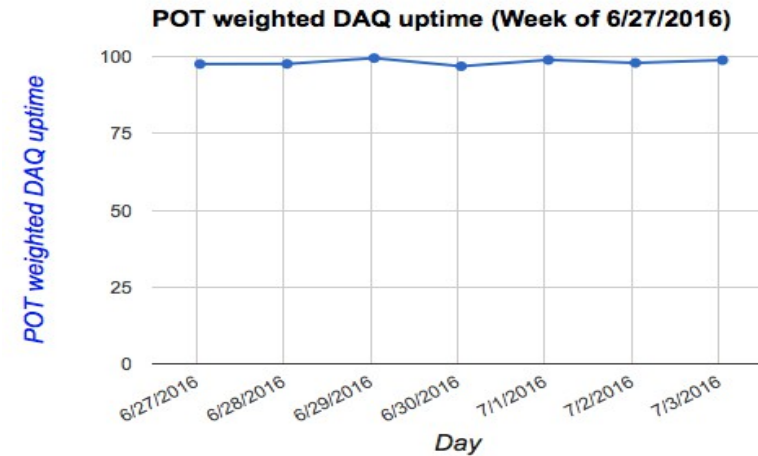
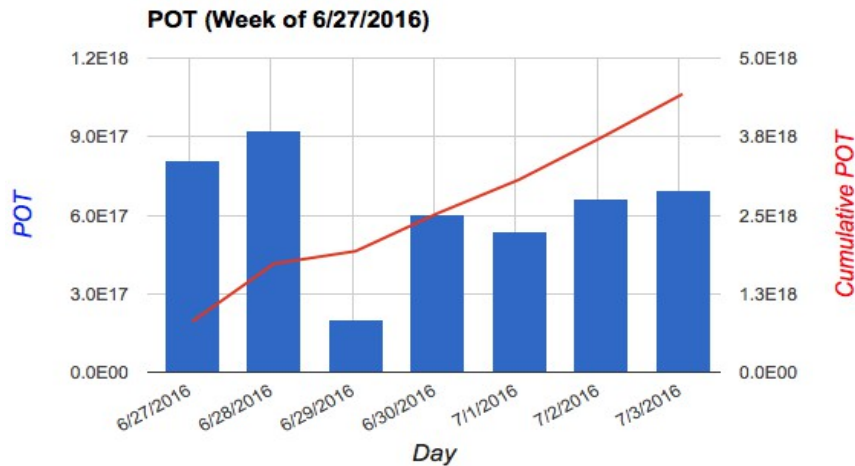
University of Pittsburgh



**All Experimenters' Meeting**  
**11<sup>th</sup> July, 2016**

# POT plots: June 27 week

## POT delivered & recorded



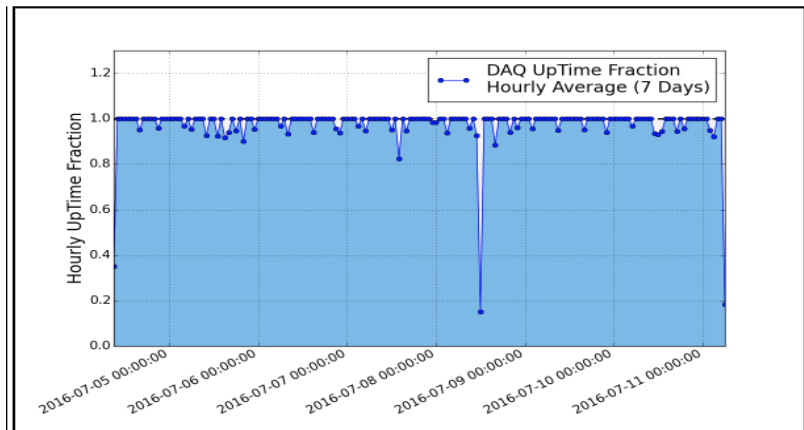
Weekly POT Weighted uptime % = 98.2%

Weekly POT recorded/delivered = 4.34E18/4.43 E18

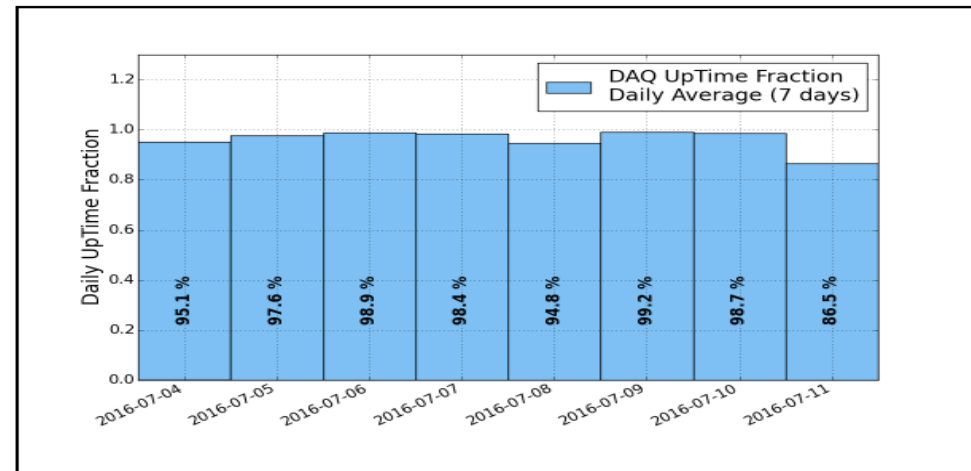
\* Beam down time on June 29.

# DAQ and POT plots: July 07 week

## DAQ Uptime

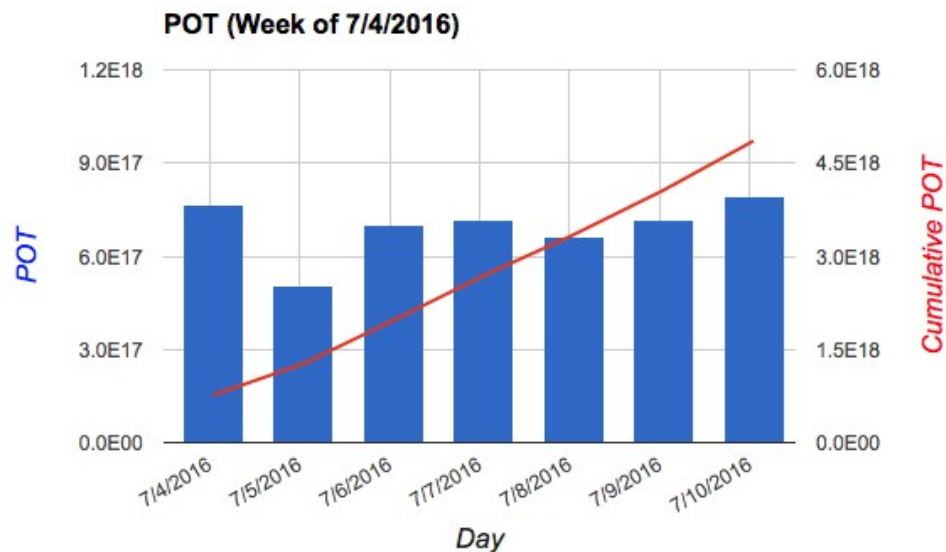


DAQ UpTime (Hourly, Past Week)

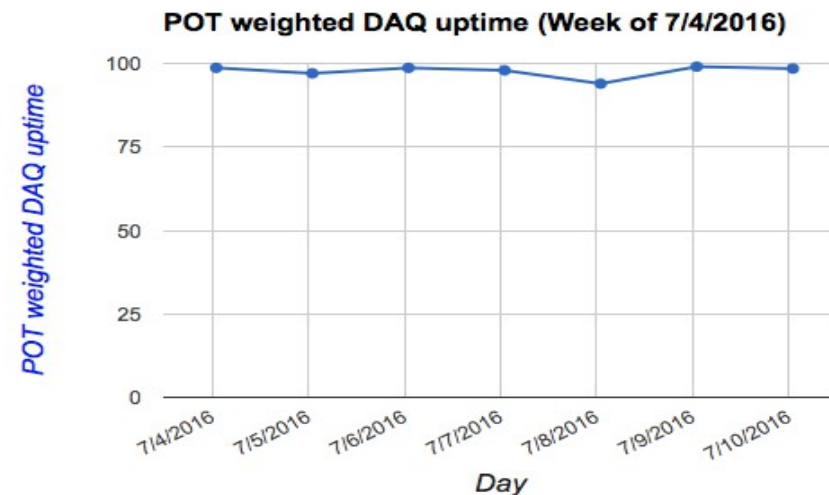


DAQ UpTime (Daily, Past Week)

## POT delivered & recorded



Weekly DAQ Uptime % = 97.5%



07/11/2016

Weekly POT Weighted uptime % = 97.8%

Weekly POT recorded/delivered = 4.75E18/4.86 E18

# Computing Summary: June 27 week

Average Jobs Running Concurrently [↗](#)

**553**

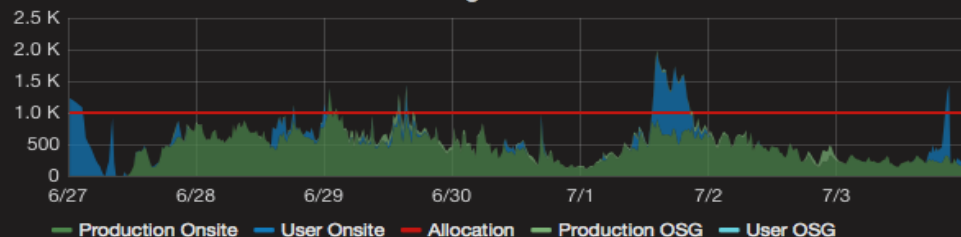
Total Jobs Run [↗](#)

**247354**

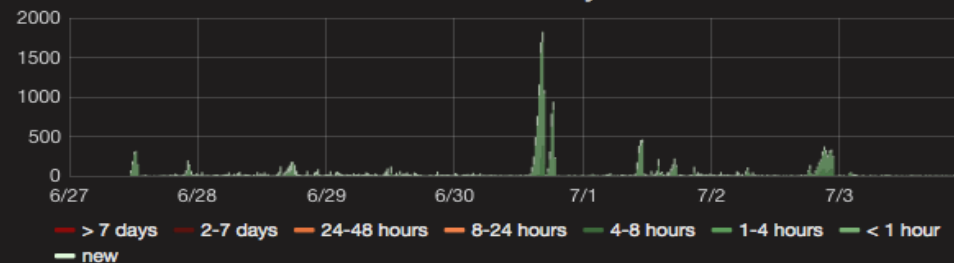
Average Time Spent Waiting in Queue (Production) [↗](#)

**4.5 min**

Running Batch Jobs



Queued Production Jobs by Wait Time



Total Jobs Failed (nonzero exit code)

**15026**

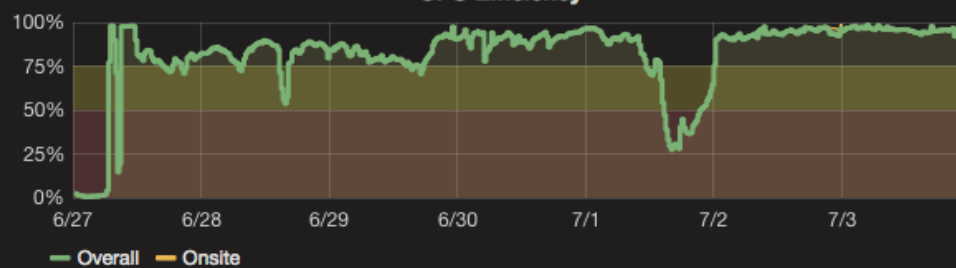
Average CPU Efficiency [↗](#)

**75.5%**

Job Success Rate



CPU Efficiency



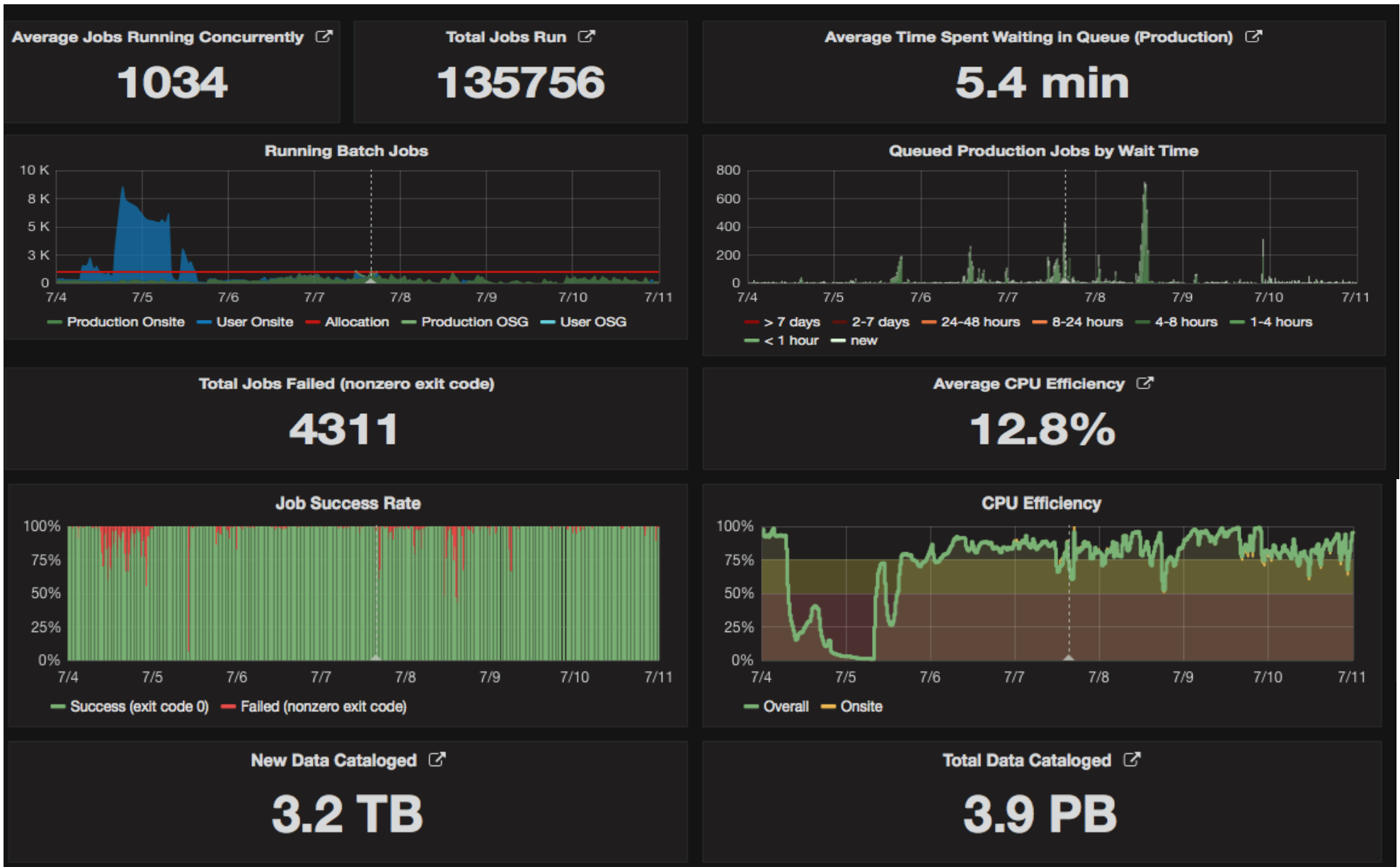
New Data Cataloged [↗](#)

**4.8 TB**

Total Data Cataloged [↗](#)

**3.8 PB**

# Computing Summary: July 07 week



## Other News:

- 6/29 Beam down time work: Pulser Run, Interlock tests and Laser runs
- Found some water drop from the condensation at the Feedthrough. Possible reason: summer with high humidity. People are working on this to have the best possible solution. Suggestions: humidifier, dry fan .. etc
- Good news:  
**Milestone:  $3.3E20$  POT on tape - half of the goal.**

Thank you