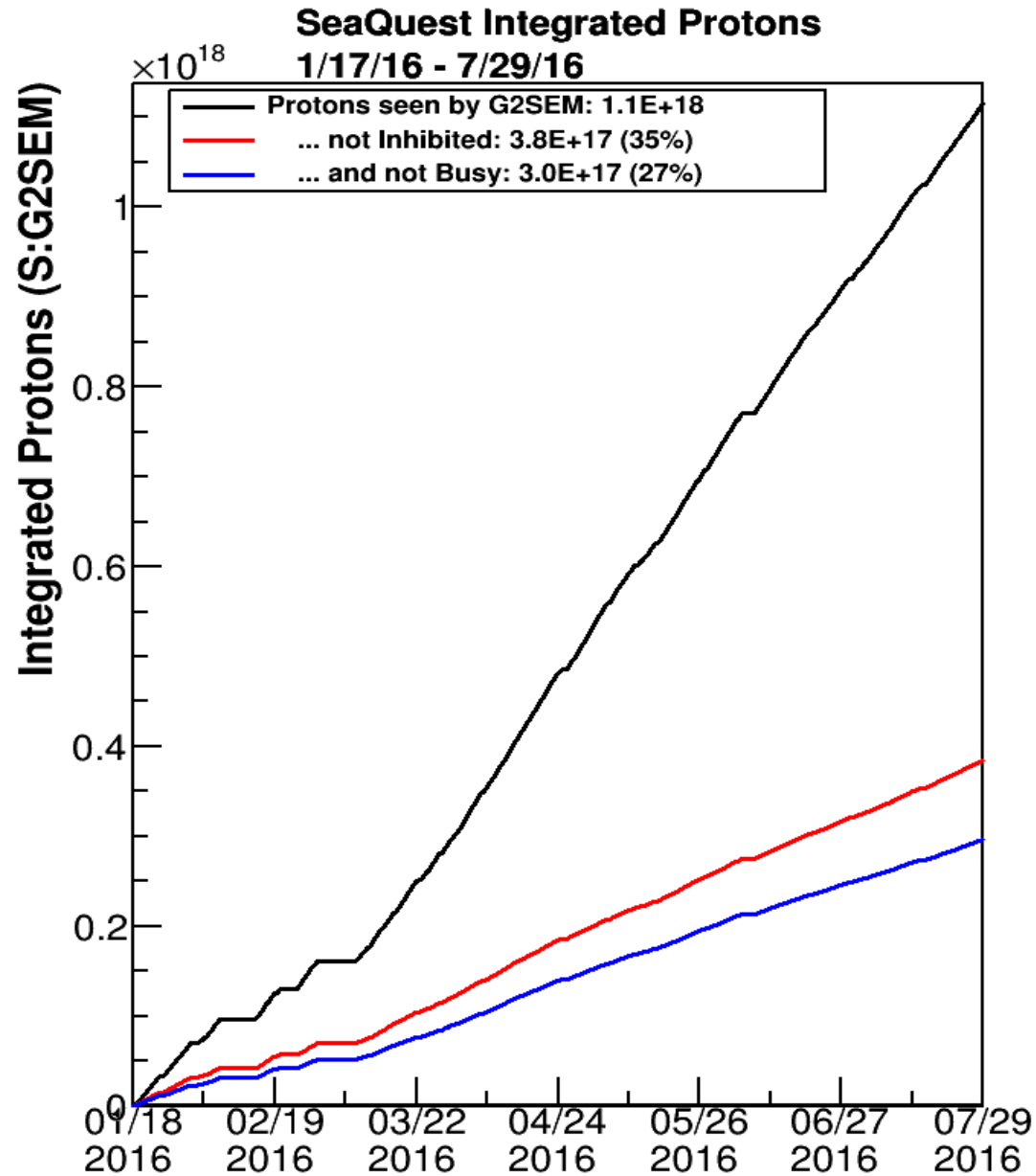


# AEM report from SeaQuest

Andrew Chen  
UIUC

For the Seaquest collaboration  
Aug. 1, 2016

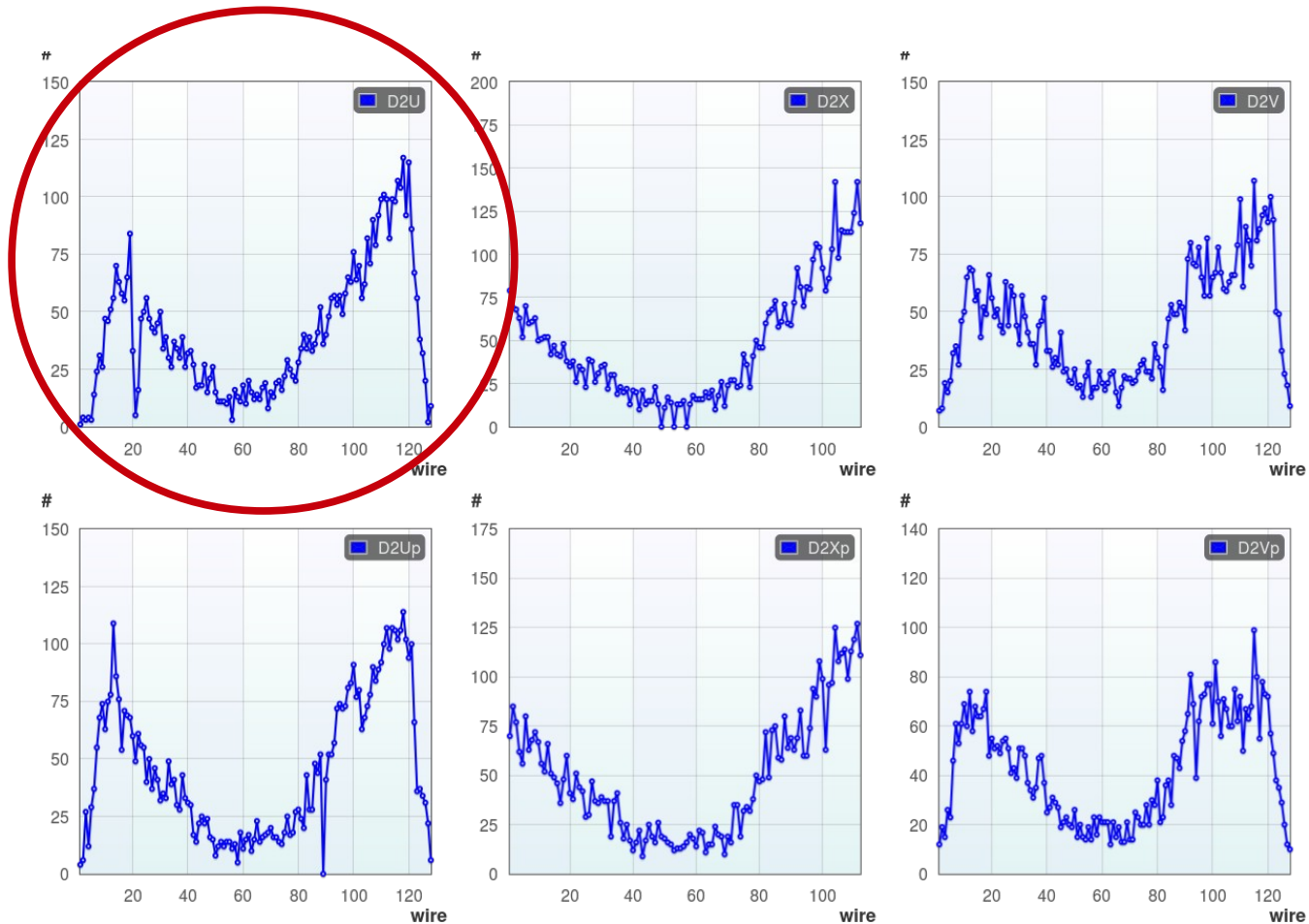
# Integrated protons



# List of tasks

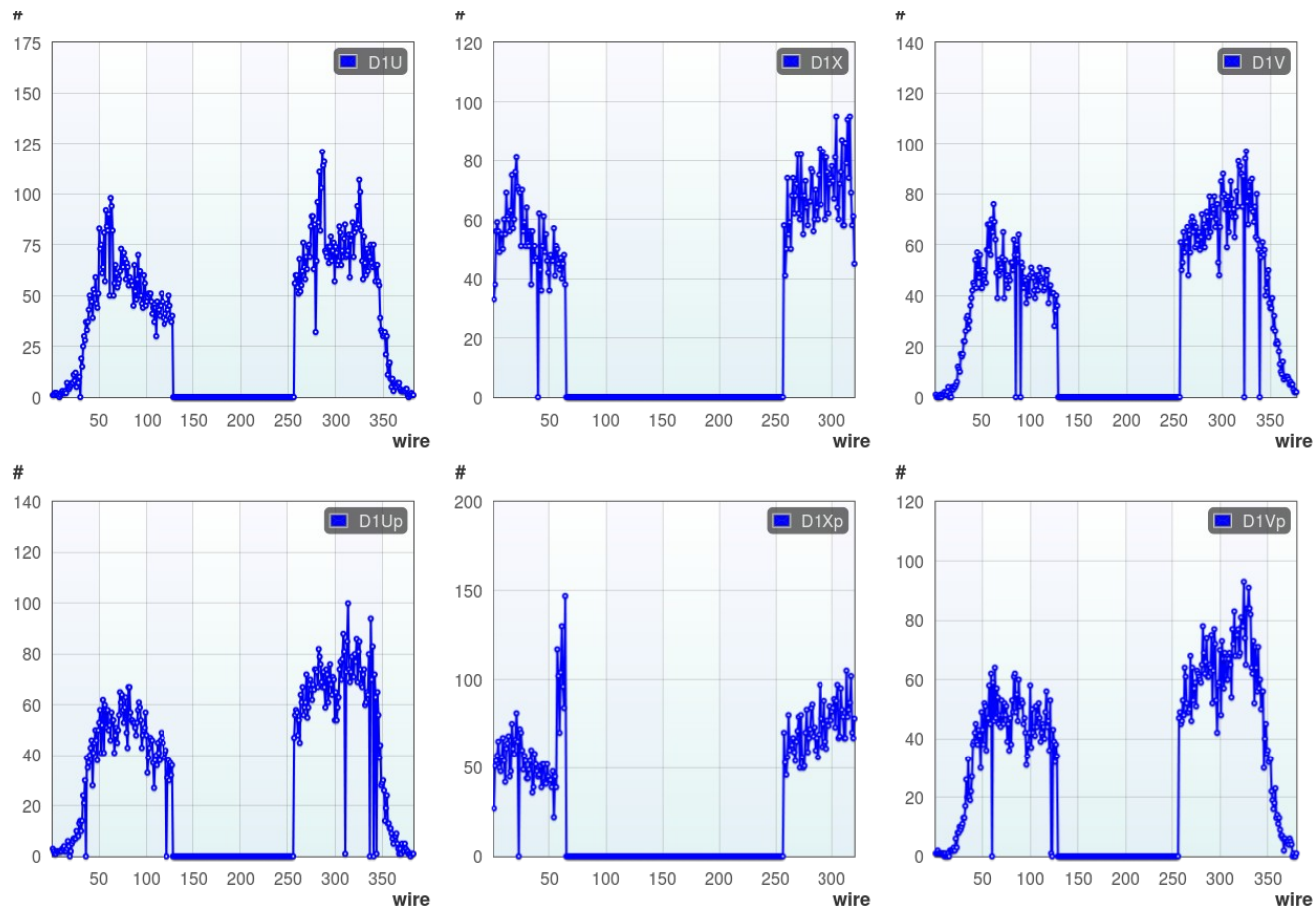
- Warm up targets; turn off HV on detectors
- Switch to Ar:CO<sub>2</sub> for chambers
- Survey detector position
  
- D2U repair
- Prop Tube repair
- St. 1 full readout upgrade
- St. 1 gas system upgrade
- DAQ buffer event upgrade
- Trigger upgrade

# D2U repair



- Kept tripping HV toward the end of data taking; needed to lower HV (by 20V to 50V) to keep it running. Maybe a bit inefficient. Want to check and fix.

# St. 1 full read out upgrade



- The middle of the St. 1 has not been read out. The area is covered by St. 0 chamber.
- Would like to read out these middle channels as well.

# Data analysis

- Production with latest data collected
  - Survey
  - Calibration
  - New Geometry schema
- Integrate new data into existing datasets to update our physics results