

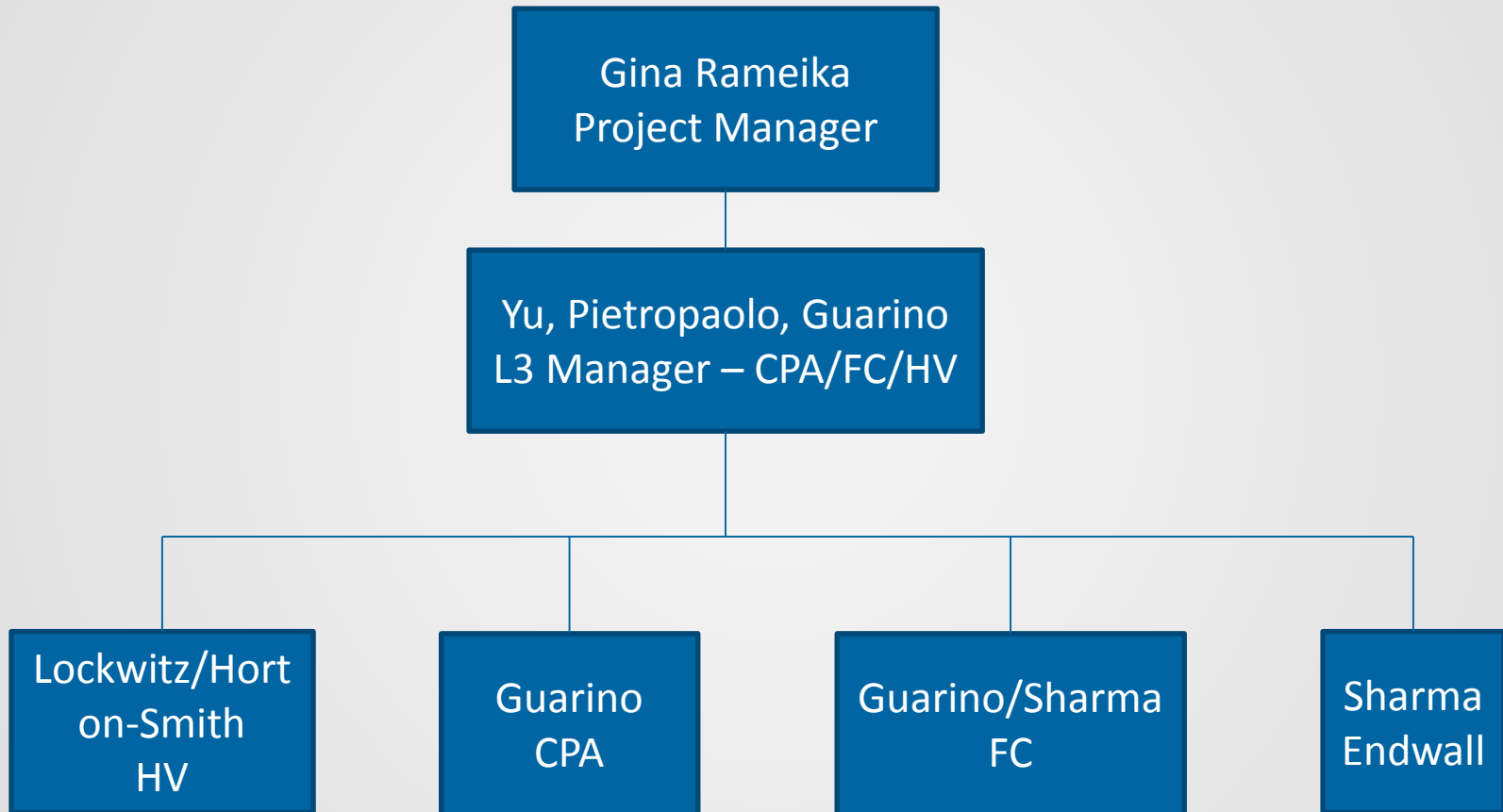
TPC FABRICATION SCHEDULE



VICTOR GUARINO

Argonne National Laboratory
November 10, 2016

CPA/FC/HV ORANIZATION



THE CPA TEAM

ANL	Mockup, mechanical design, system integration, assembly
BNL	Electrical design
CERN	HV test, restive panels, HV feed-through (with ETH), assembly
FNAL	FC-CPA-HV test
KSU	HV bus, electrical design
Princeton	mechanical design and testing
UCLA	HV feed through, filters
UC Davis	HV cup
Yale	HV tests
U. Huston, TX	HV filters

Plus the TPC Installation team (Duke, UW PSL,UMN, ...)



THE FIELD CAGE TEAM

ANL	Mechanical design, system integration
BNL	Mechanical, electrical design
CERN	Profiles, ground planes, HV tests, End-wall assembly(?)
FNAL	FC-CPA-HV test @PC4
LBNL	Beam plug, FC-CPA-HV test @PC4
LSU	Resistor-divider, mechanical mockup
Stony Brook U.	Mechanical mockup, prototyping, top/bottom assembly
William @ Mary	Prototyping, mockup, FC-CPA-HV test @PC4

Plus the TPC Installation team (Duke, UW PSL, UMN, ...)



CPA/FC/HV FABRICATION SCHEDULE

- Overview
 - Complete Ash River testing – what do we learn?
 - Finalize installation concept
 - Perform cold testing at PSL
 - Update design/drawings
 - Production readiness reviews
 - Begin production
- The schedule is driven by completing the Ash River tests, cold testing, and results of HV 35 ton test
- Details in DocDb 1619



CPA MILESTONES

- Update design/drawings based on Ash River experience and review feedback – complete January 3.
- Production Readiness Review – January 5
- Order resistive panels (CERN) and ship to ANL – complete March 27
- Order Material/Fabrication/Assembly (ANL) – complete June 18
- Arrive at CERN August 13



TOP/BOTTOM FC MILESTONES

- Update design/drawings based on Ash River experience and review feedback – complete January 3.
- Production Readiness Review – January 5
- Ground Planes (CERN) delivered to SBU March 15
- Profiles and endcaps at SBU March 30
- Order Material/Fabrication/Assembly – complete July 3
- Arrive at CERN September 1



ENDWALL MILESTONES

- Update design/drawings based on Ash River experience and review feedback – complete January 3.
- Production Readiness Review – January 5
- Profiles and endcaps delivered March 30
- Order Material/Fabrication/Assembly – complete July 18
- Arrive at CERN September 16





CONCLUSION

- A complete design has been developed.
- Four mechanical prototypes have been constructed and shipped to Ash River
- The mounting and deployment of the FC modules will be tested at Ash River before production.
- Extensive physical testing and analysis has been performed.



