

Detector Update

A. Gendotti, S. Murphy, A. Rubbia

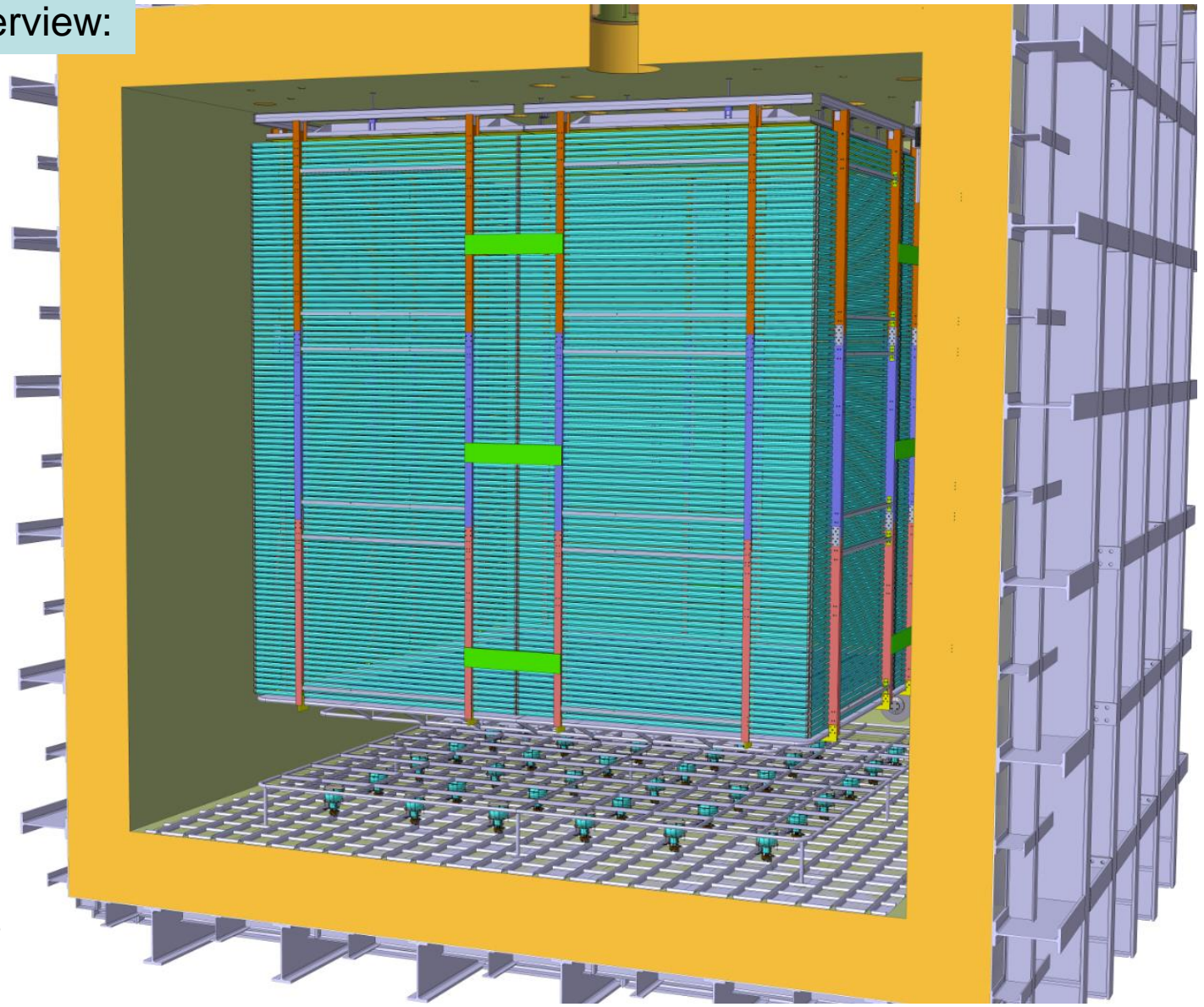
ETH zürich

07.09.2016

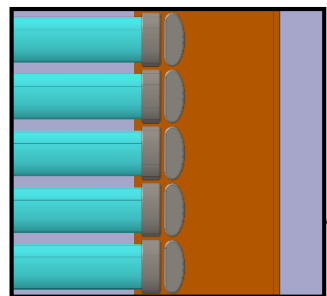
- Field Cage hanging and Installation System
- Clean Room Buffer preliminary Dimension at EHN1
- Top Fts

Detector Update Overview:

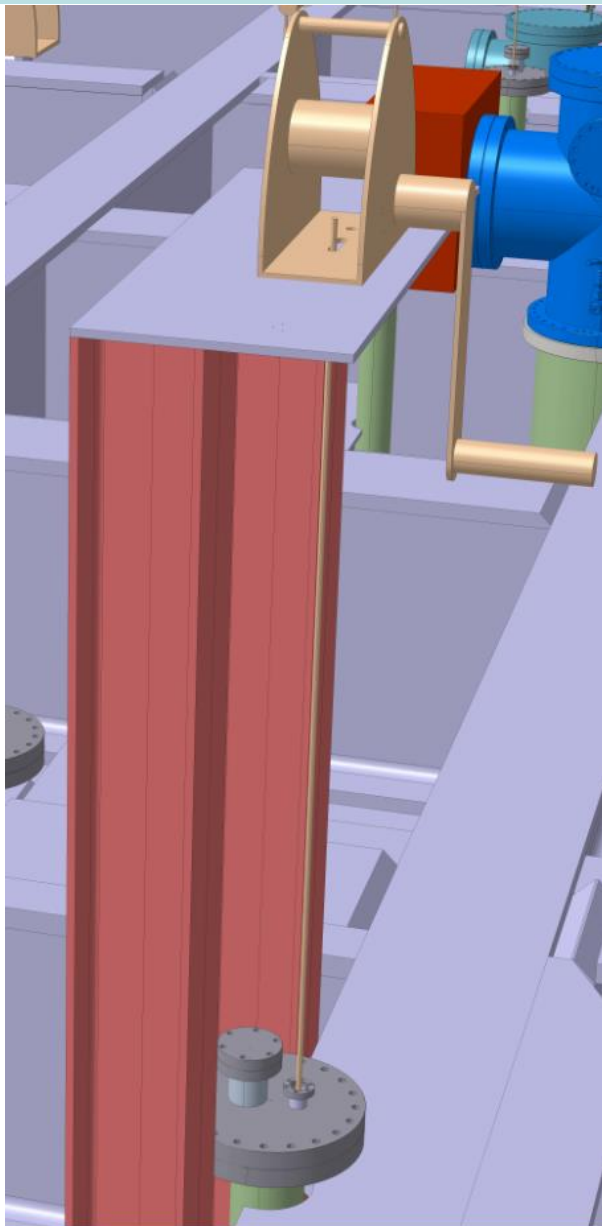
Field Cage Hanging Structure



60mm between Field Shapers



Field Cage hanging and Lifting System proposal



- Temporary structure over each FTs on the top of the Cryostat
- Manual Lifter
- 6mm wire dia →
- 23m Long

Konsolenwinde KWW/KWE



- leicht und geräuscharm
- verzinkt oder in Edelstahl lieferbar
- selbsthemmende Lastdruckbremse
- grosse Seilauflage
- einfache Befestigung
- klappbarer Kurbelgriff
- auch mit abnehmbarer Kurbel oder mit Freischaltkurbel lieferbar

[Bild/Zeichnung KWW300/KWE250]

[Bild/Zeichnung KWW650/KWE650]

[Bild/Zeichnung KWW1250/KWE1000]

Konsolenwinde KWW/KWE

Bestell-Nr.	Tragfähigkeit kg		für Seil-Ø mm	Seil-aufnahme m	Seilweg* mm	Kurbel-kraft** kg	Gewicht kg	Preis** CHF
	erste Seilage	oberste Seilage						
verzinkte Ausführung								
KWW300	300	150	4	22	126	27	3,9	195.00
KWW650	650	330	6	23	39	24	5,9	245.00
KWW1250	1250	490	8	28,5	16	24	16,0	385.00

Edelstahlausführung

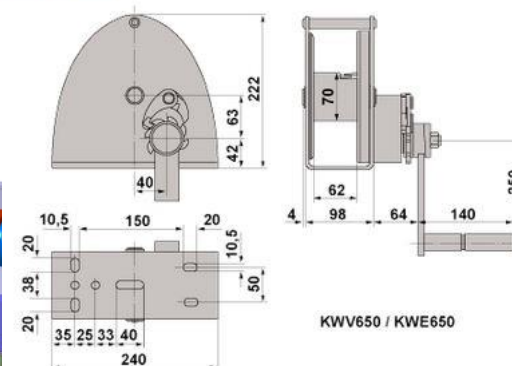
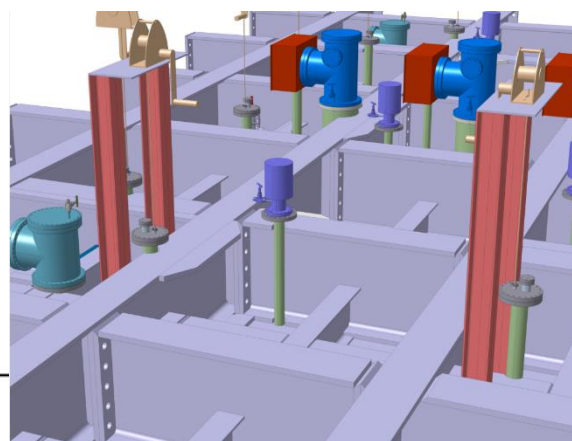
KWE250	250	125	4	22	126	22	3,9	450.00
KWE650	650	340	7	16	39	24	6,3	600.00
KWE1000	1000	390	8	28,5	16	20	16,0	860.00

* Seilweg je Kurbelumdrehung in der 1. Seilage

** Preis ohne Drahtseil

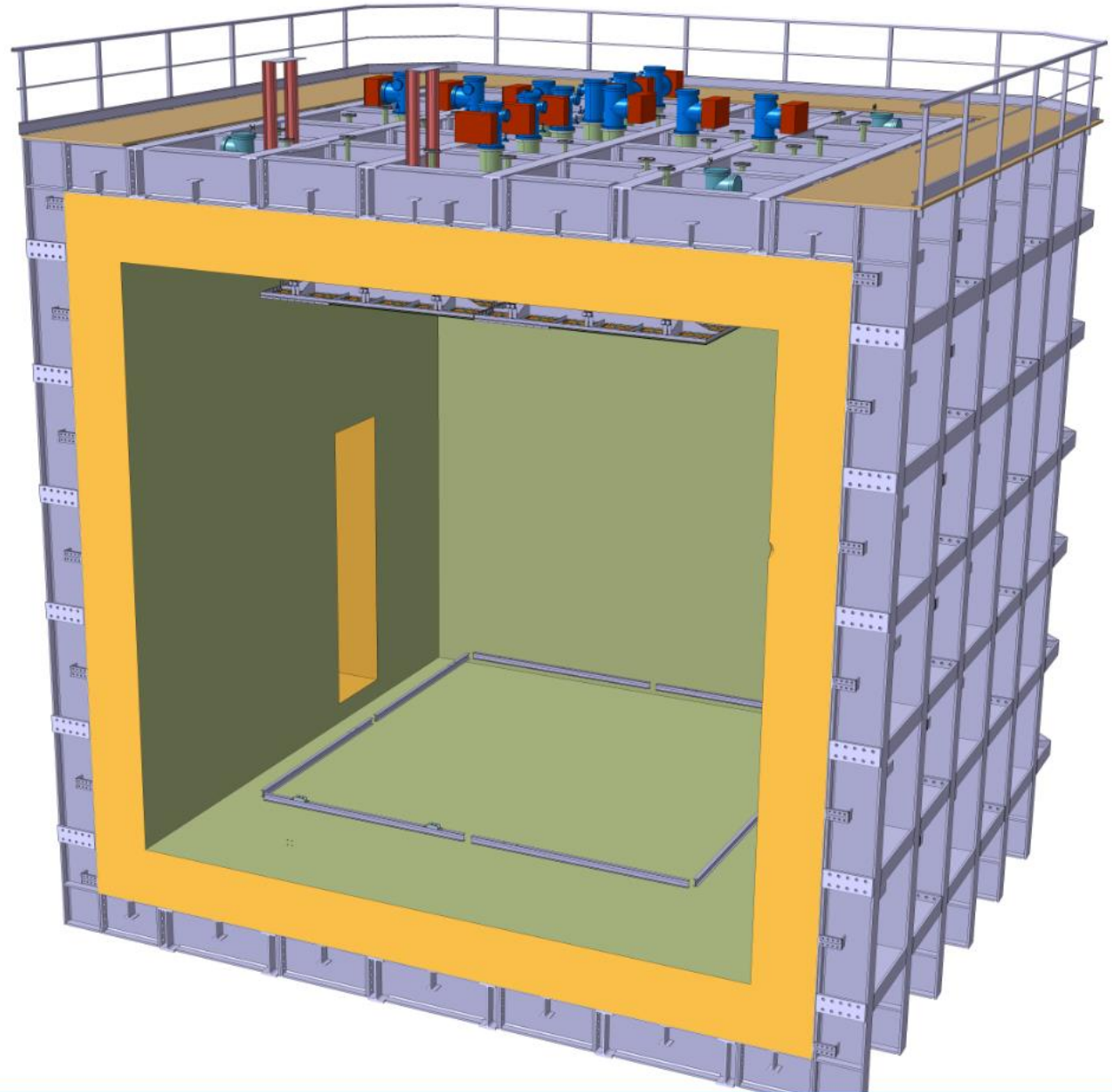
- Windenseile konfektioniert

- Windenseile auf Spule

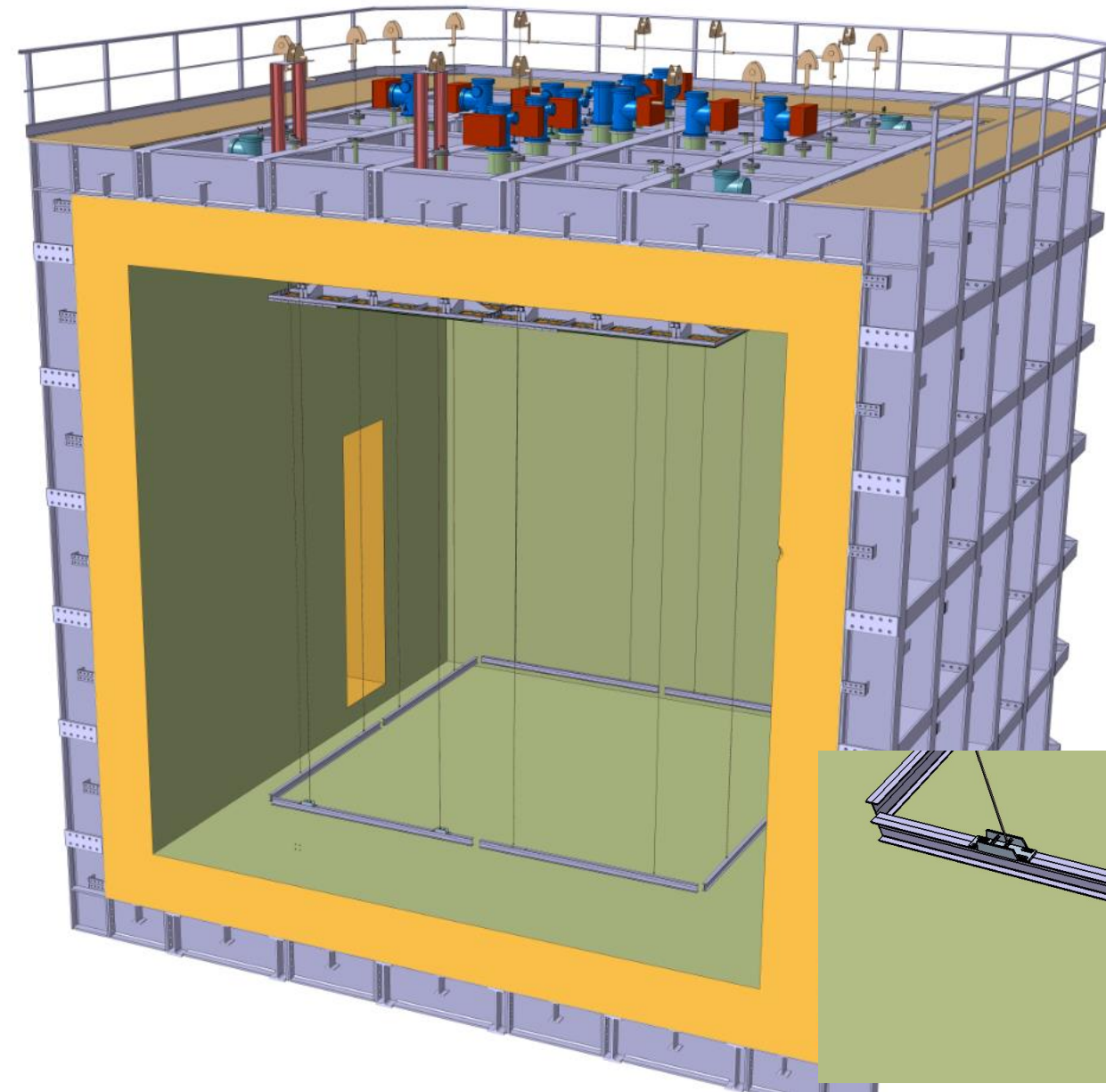


fördern, heben, Lasten bewegen ... **MEILI**

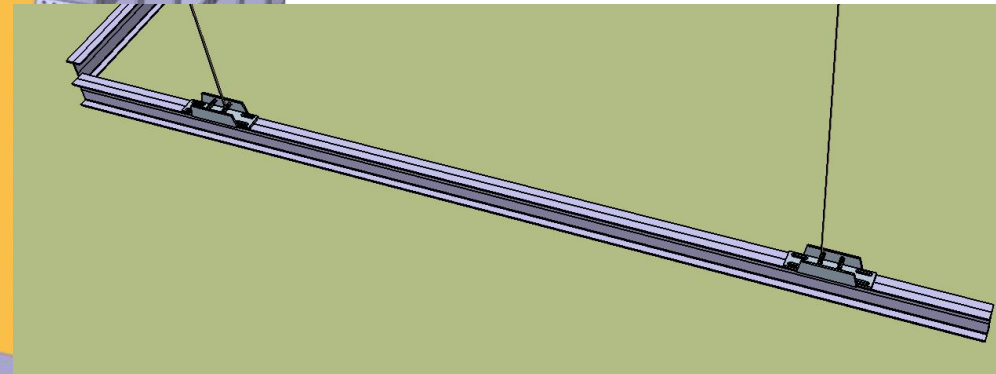
- Place the SS I-Beam in the correct position respect to the Cryostat and CRP



Field Cage hanging and Lifting System proposal

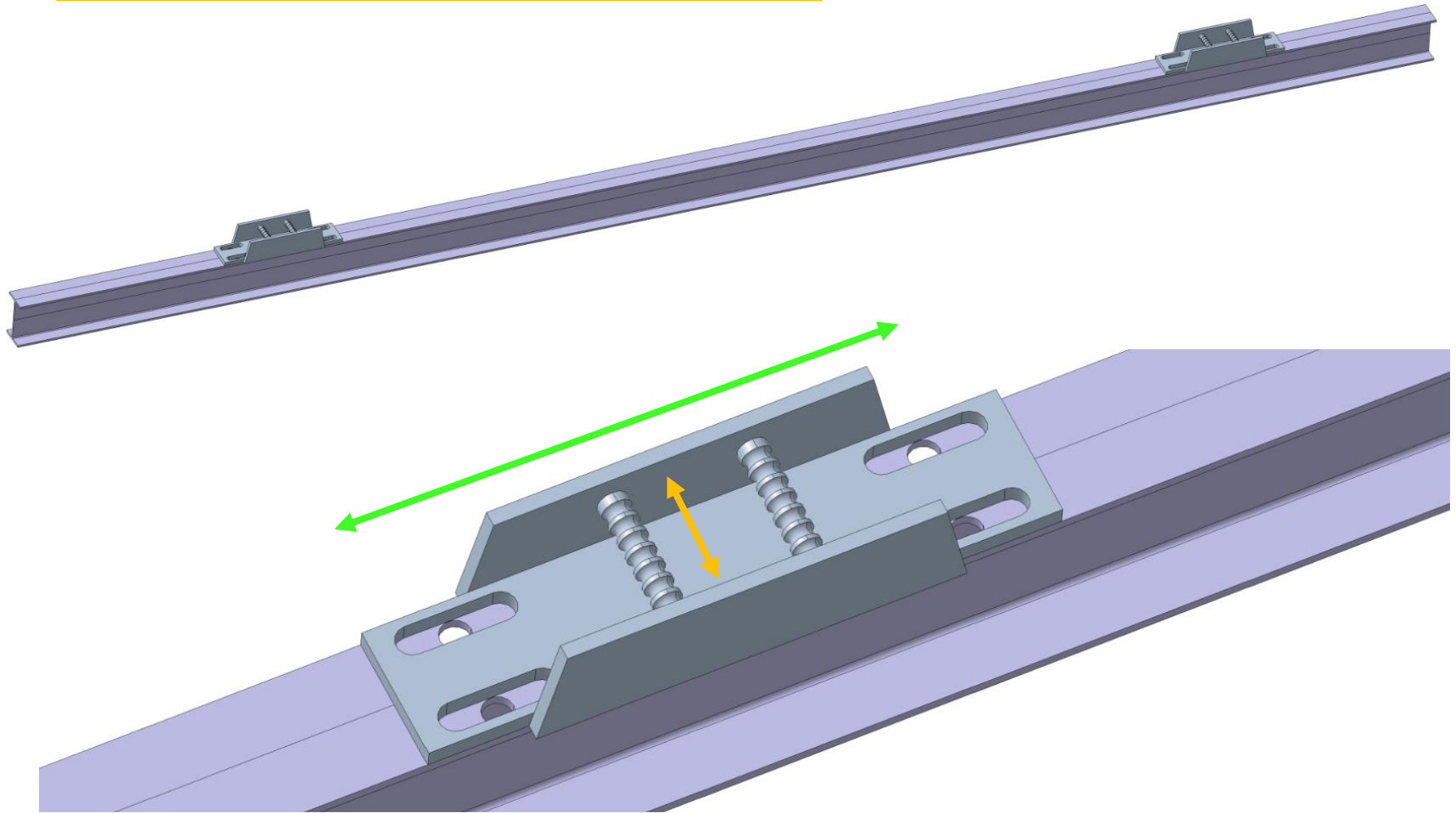


- Lower the lifting wires



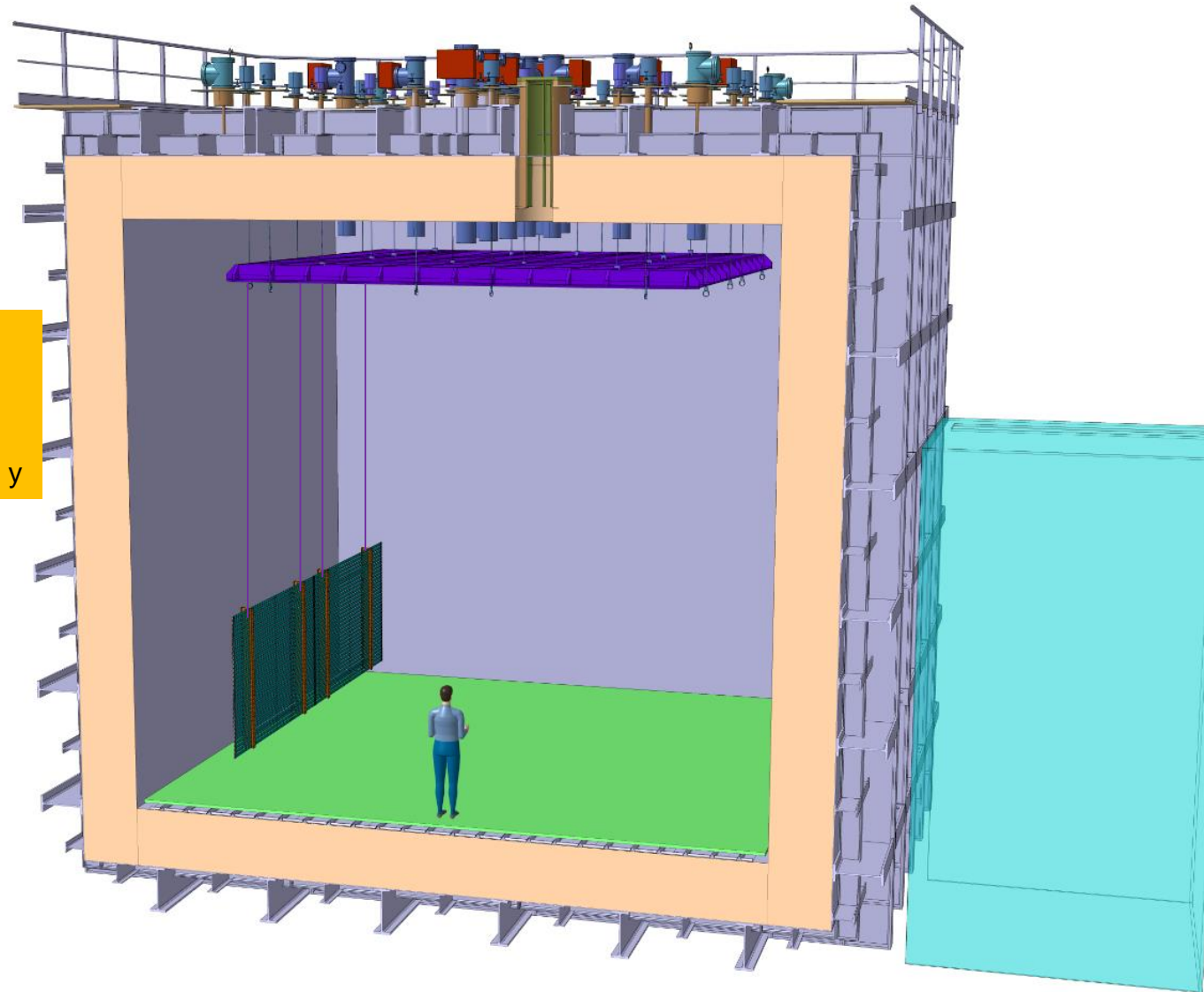
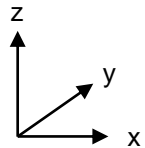
Field Cage hanging and Lifting System proposal

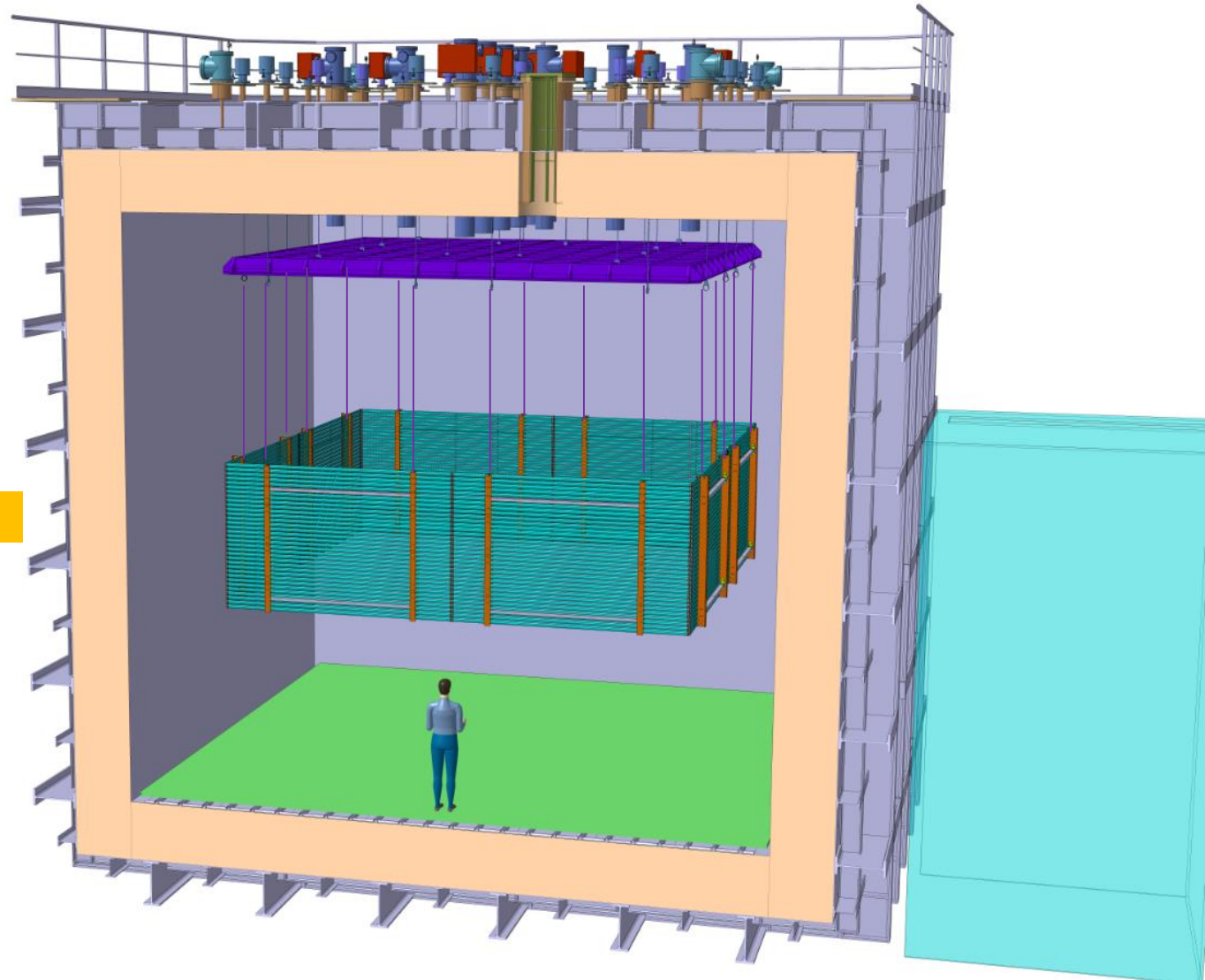
- According to the precision of the penetrations position on top the lifting wire can be fixed in order that the Beam stay in the correct position.



Field Cage hanging and Lifting System proposal

- Beam Lifted and FC Modules can be installed
- 2 People on the Top to manually lift the Modules
- FC is already aligned in x and y



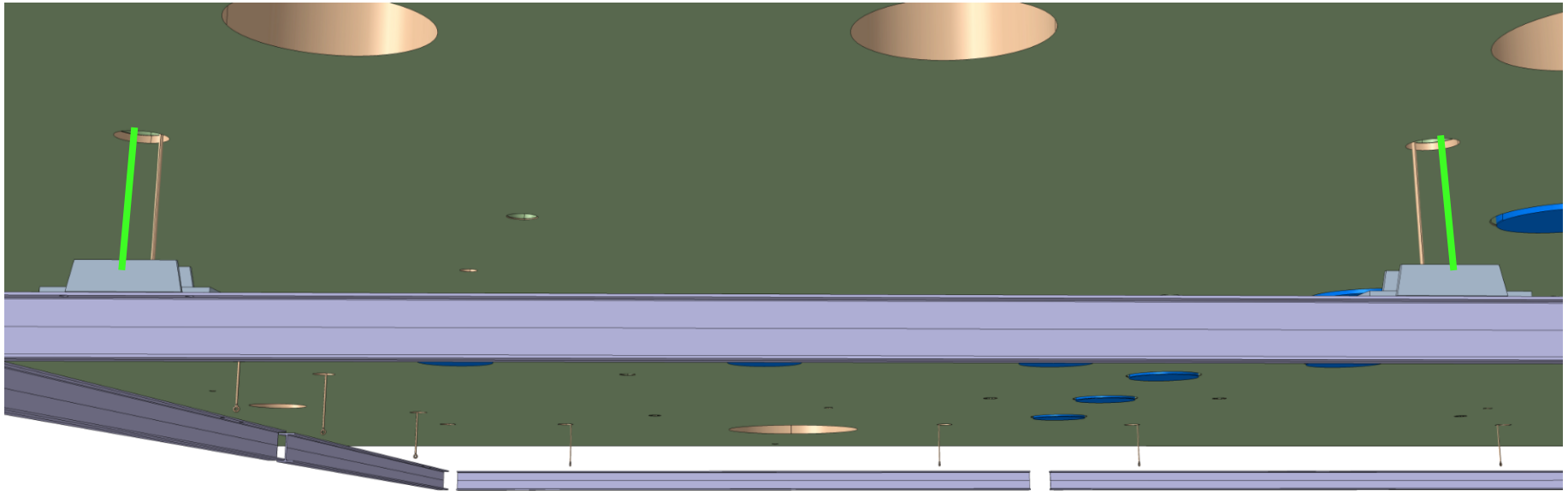


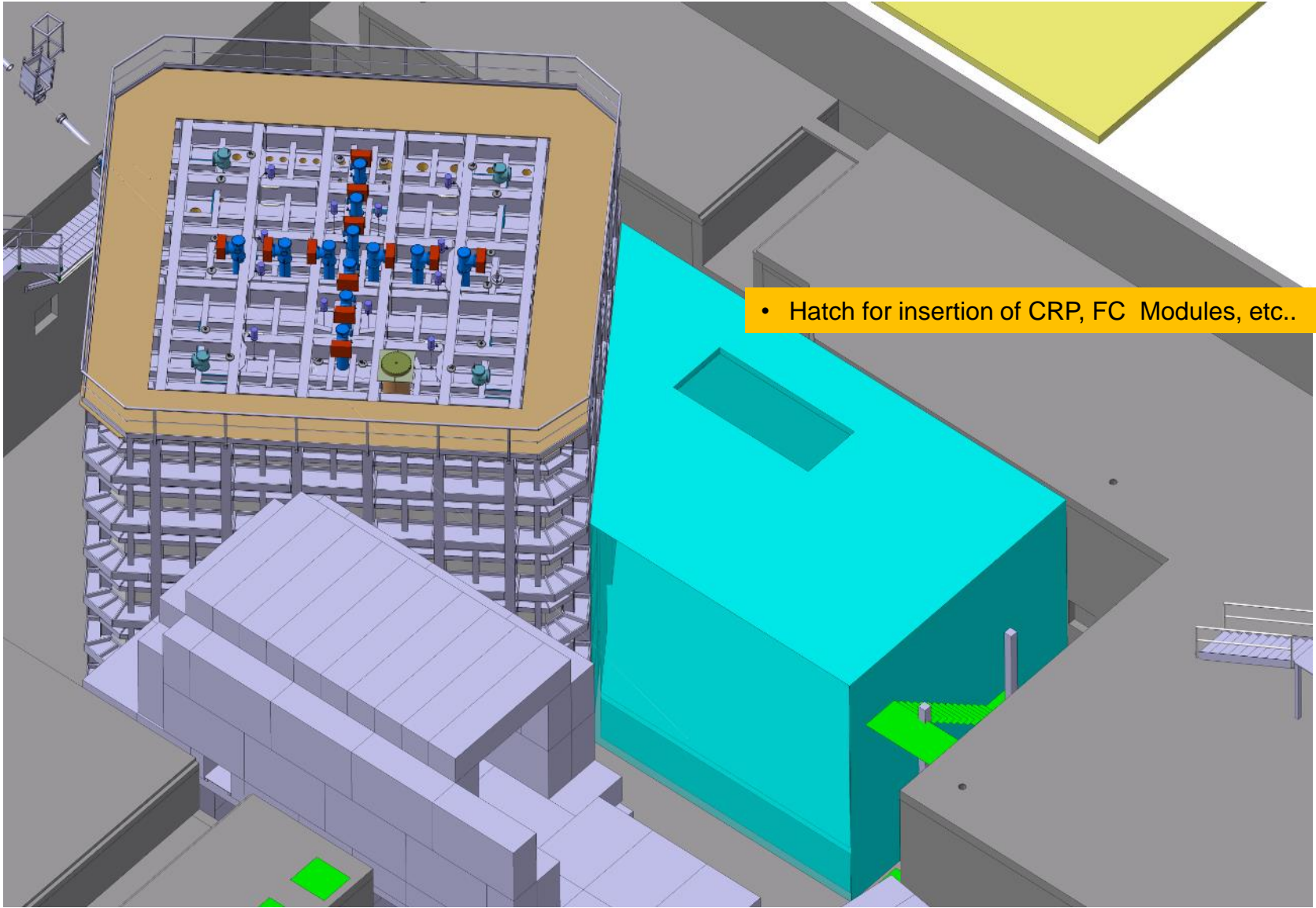
- Install all the modules

Field Cage hanging and Lifting System proposal

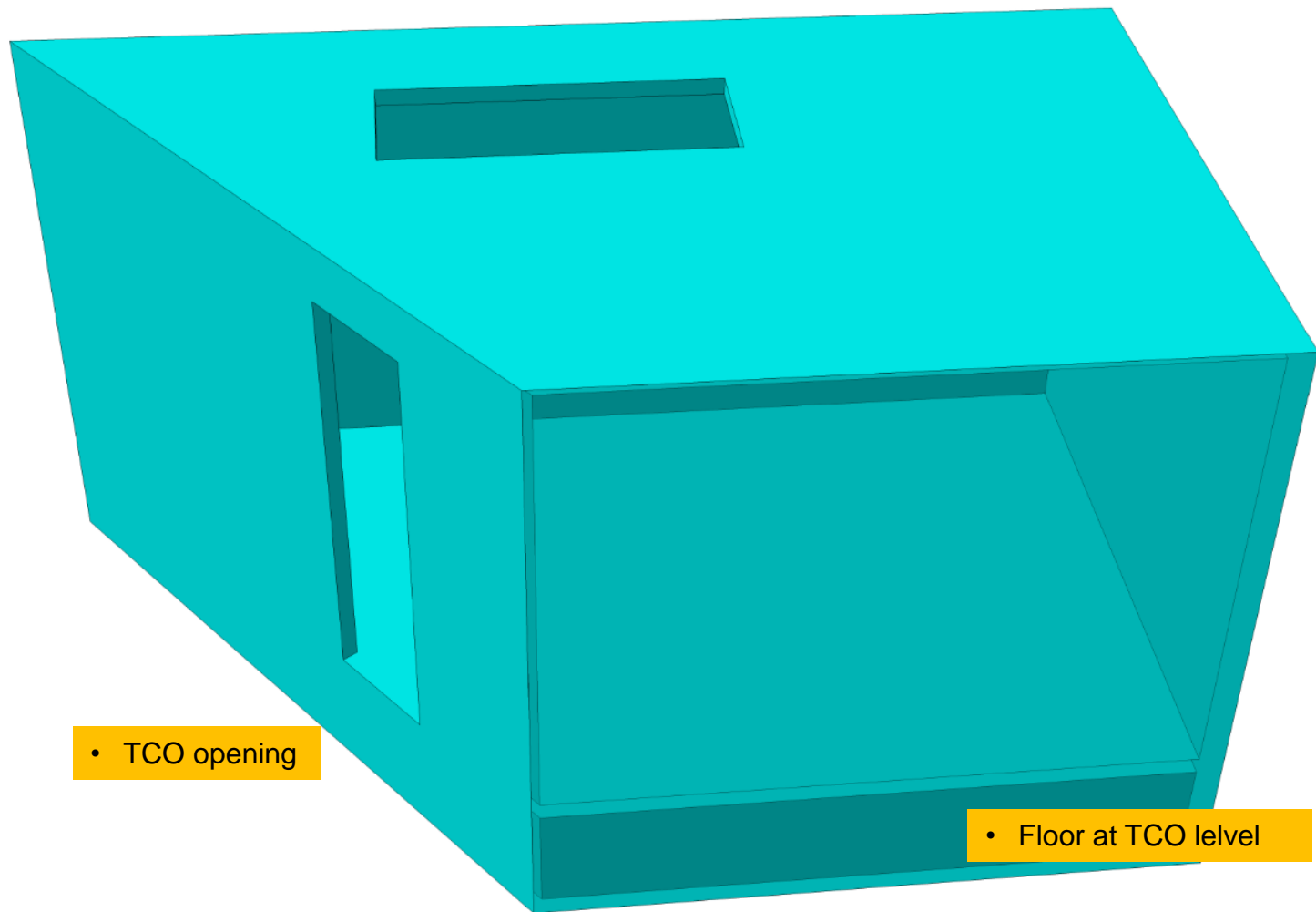


- After the Field Cage is fully installed and in the final position
- Final wires are installed with possibility to fine tune the length
- Installation wires are then removed





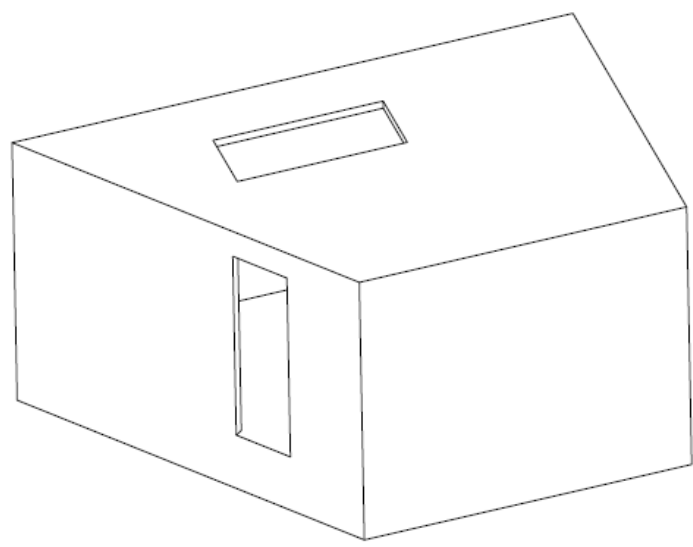
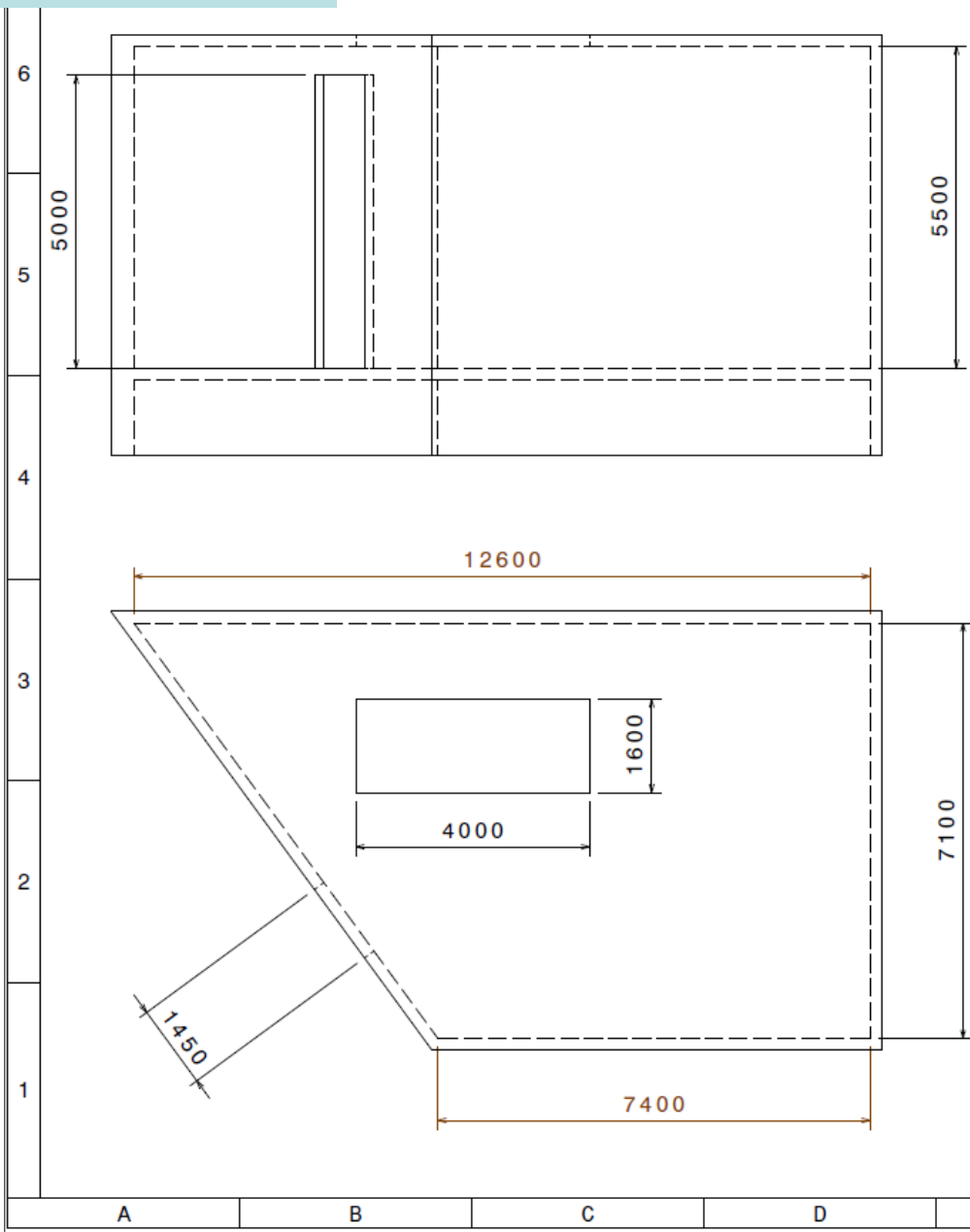
- Hatch for insertion of CRP, FC Modules, etc..



• TCO opening

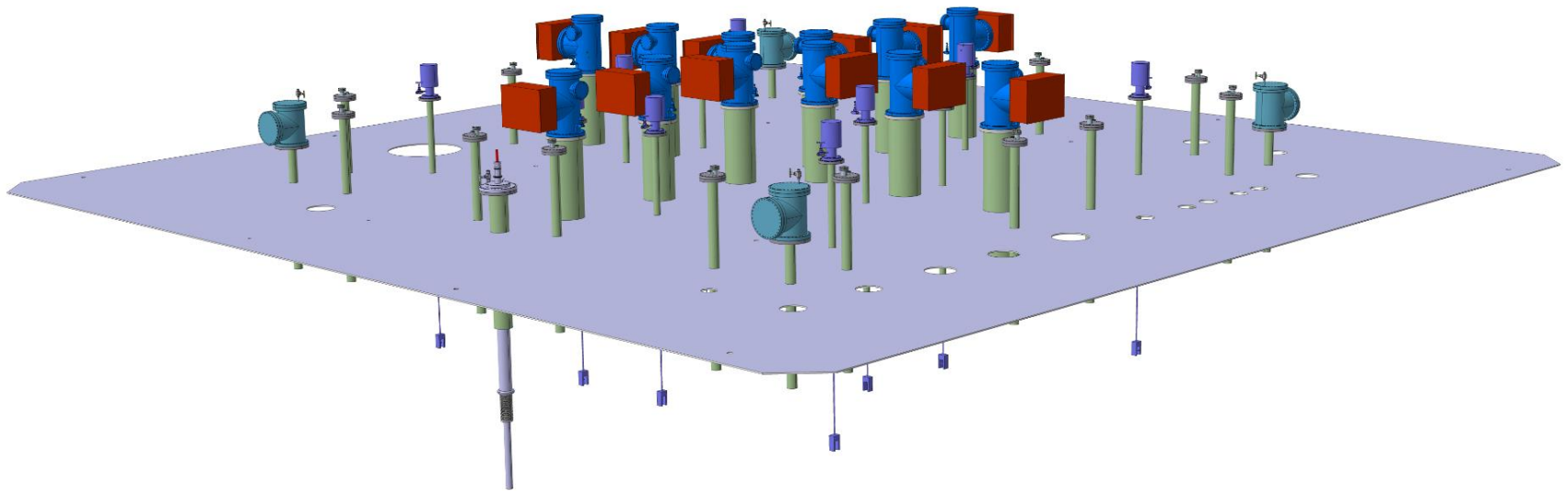
• Floor at TCO level

CLEAN ROOM



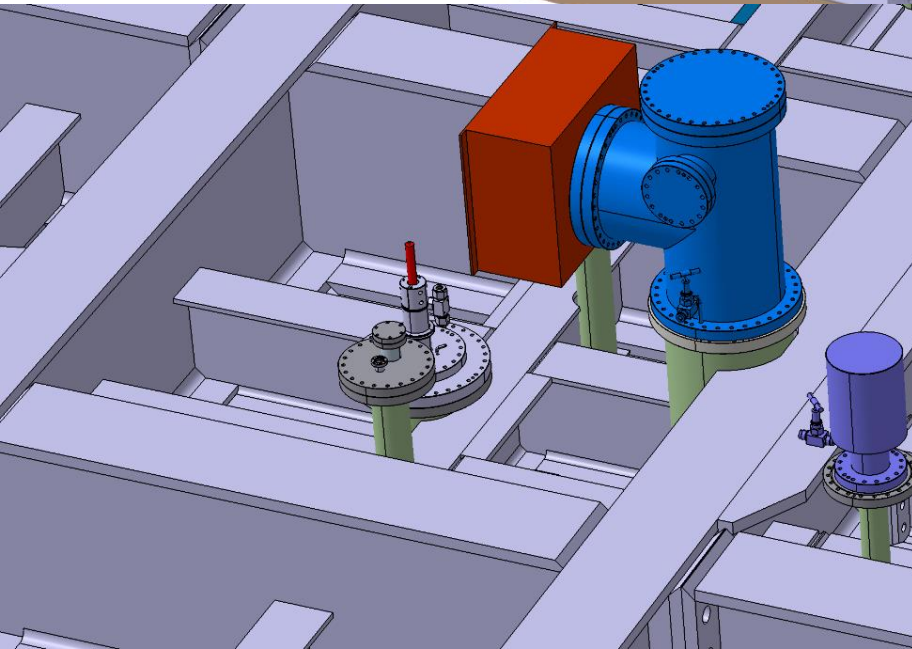
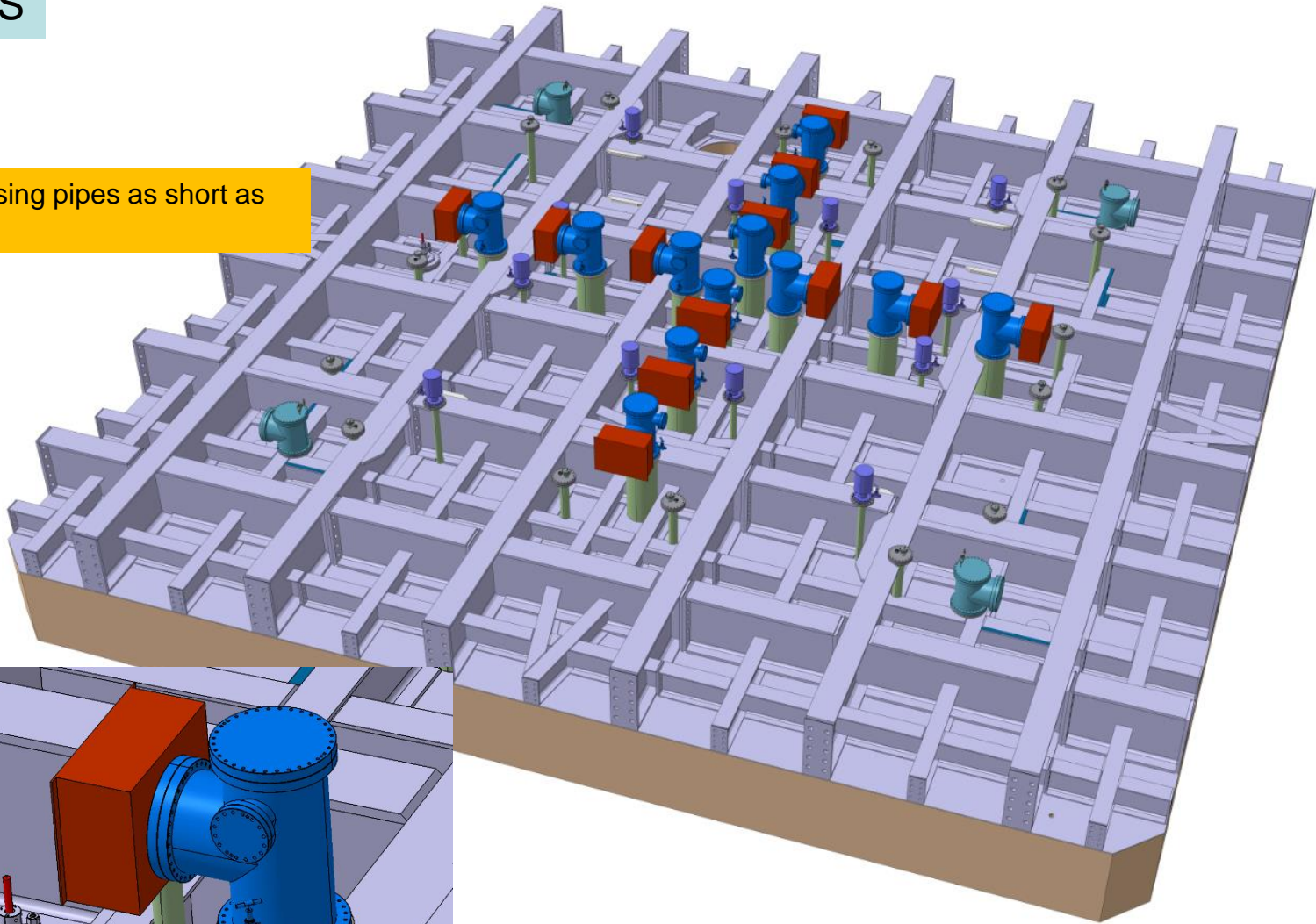
Pos	Amount	Art-Number	Part Name	Material	Description							
1	1	XX-XXXX			Text							
Project: Project Name									Scale	Tot Pages		
Sub-Proj.: Sub-Project Name									1:1	1		
Assembly: Assembly Group Name												
Created: DD.MM.YYYY		Name		Dimensions	From	1	6	30	100	300	1000	Page N°
Last Mod: DD.MM.YYYY		Name		To	6	30	100	300	1000	2000		
Constructed: DD.MM.YYYY		Name		Tolerance	±0.1 0.2 0.3 0.5 0.8 1.2							
<p style="text-align: center;">CLEAN ROOM BUFFER</p>									<p style="text-align: center;">XX-XXXX</p>			

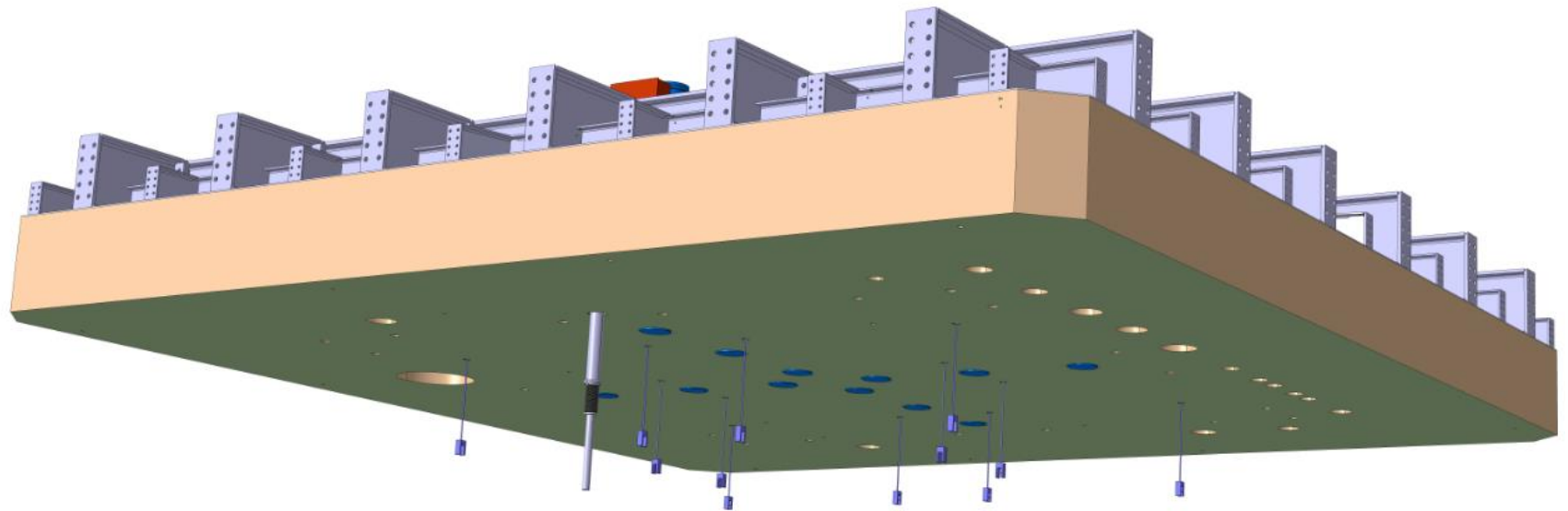
- Crossing pipes at the Cryostat in order to start to define height and size of the Flanges
- Reservate space around



CROSSING PIPES

- Where needed, crossing pipes as short as possible





Thank you