

E906/SeaQuest Report

Michelle M. Medeiros
for the SeaQuest Collaboration



Sep. 12, 2016.

Target.

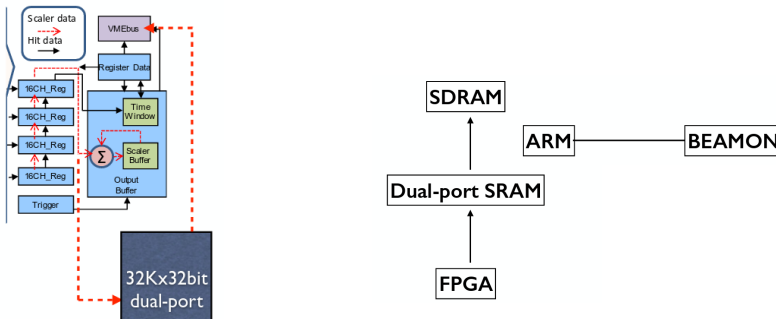
- Radiation survey of target cave was done at the beginning of the shutdown.
- Everyone should wear PPE when accessing the cave.
- The target alarms were recently tested by the Fire Department technicians.

Stations and chambers.

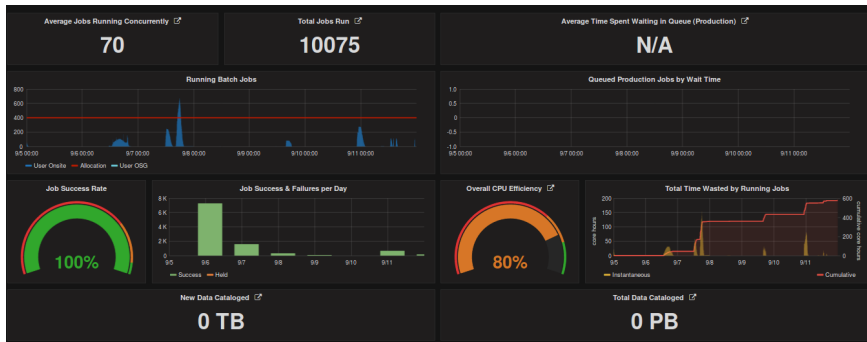
- Changed the gas in the chambers to Ar:CO₂.
- Station 0 tripped (D0Xp) and was turned off for 2 days. When turned on, it was back to normal.
- Scheduled to start the fix of the broken wire in station 2 (D2U) this week.

Upgrade being done:

- Reduce dead time for TDCs. Working with different possible options.
- Eliminate data transfer time:
 - **before:** circular buffer to data buffer
 - **upgrade to:** data directed to dual-port memory divided in 16 banks → read by ARM → saved in SDRAM (40ns per hit) → mapped to VME bus



Computing usage.



Plans.

- Start the chamber work this week → loading dock is cleaned and ready.
- Add read out to station 1 where it is covered by station 0.
- Finish data production for last run (almost finished).
- Finish the DAQ upgrade.