

SeaQuest AEM Update

Bryan Ramson

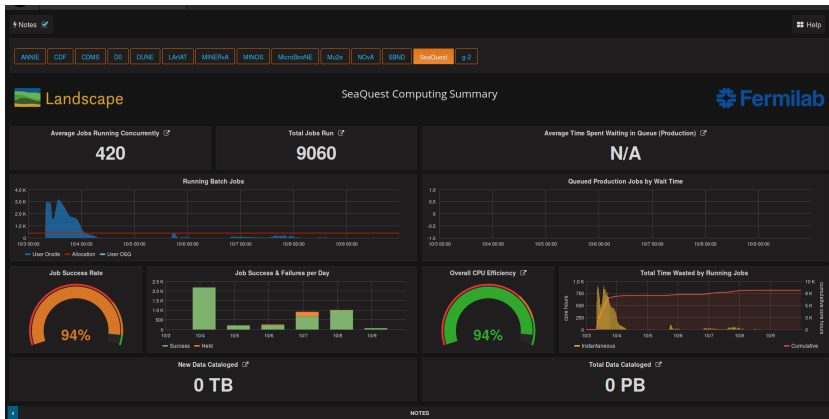
University of Michigan

October 10, 2016

Status Summary

- Target - Standard Shutdown Maintenance Commencing
- DAQ & Trigger - DAQ Upgrade Ongoing
- Chambers - Station 2 Repair Complete
- Hodoscopes - All Clear

Computing Summary



Target

- All wet pumps checked and sent off for maintenance
- Flask pressure sensors sent off for calibration
- Prepping for coldhead and refrigerator maintenance

DAQ

- Changing how events are processed \implies increase in DAQ rate

D2 Chamber Repair

- Craned out Station 2 DC for repair after noticing dead spaces and flickering
- Checked plane electronics connections found one had come loose during running
- Chamber 2 closed and reinstalled