

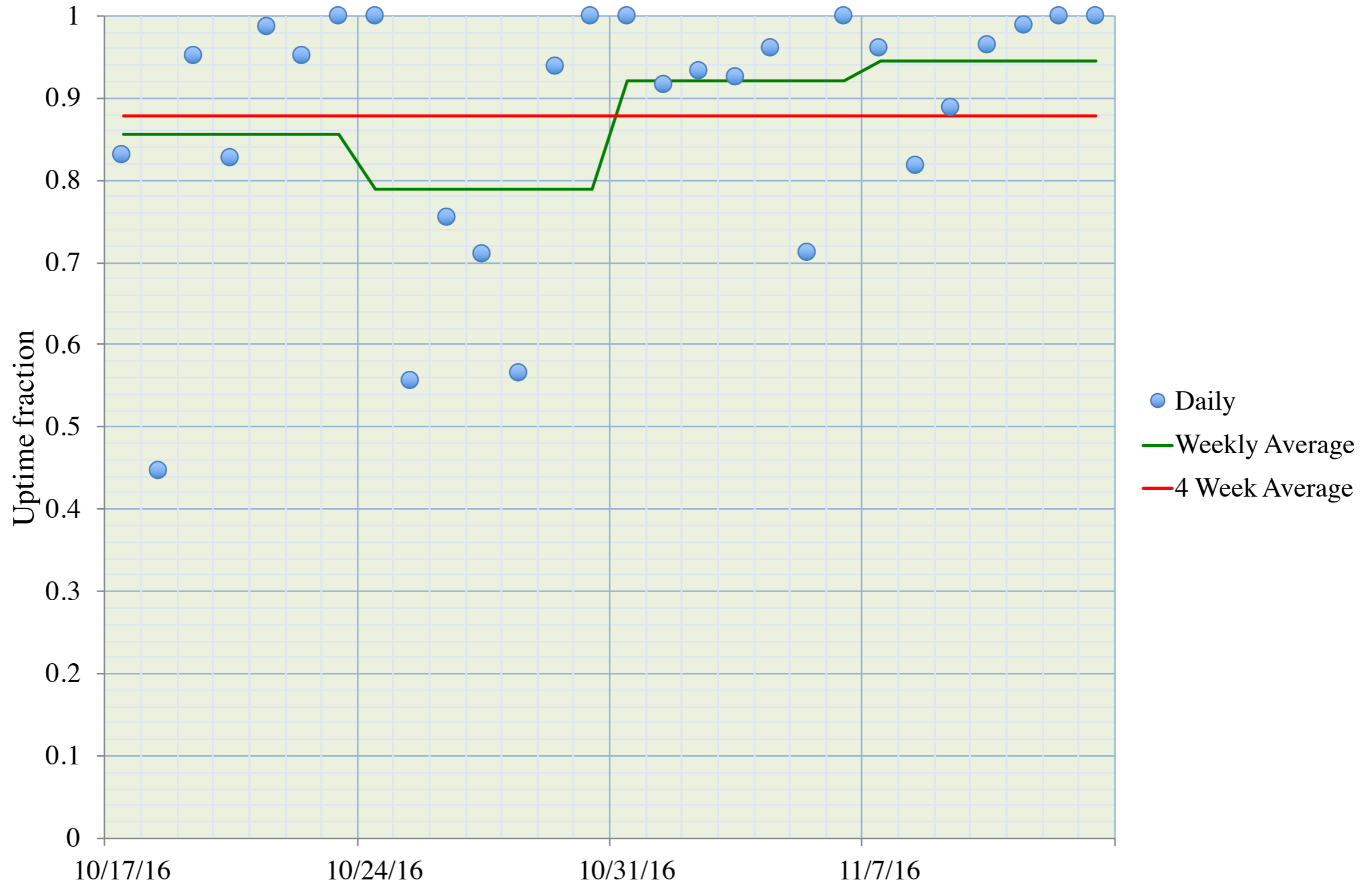
NOvA Operations Status

Evan Niner
11/14/16

Status

- Last week incorporated three new manage nodes into the Far Detector DAQ, have performed without issue.
- Both detectors stable and 100% live since beam returned. Current DAQ software releases are stable.
- Beam has returned in the same location in the NOvA event window as previously.

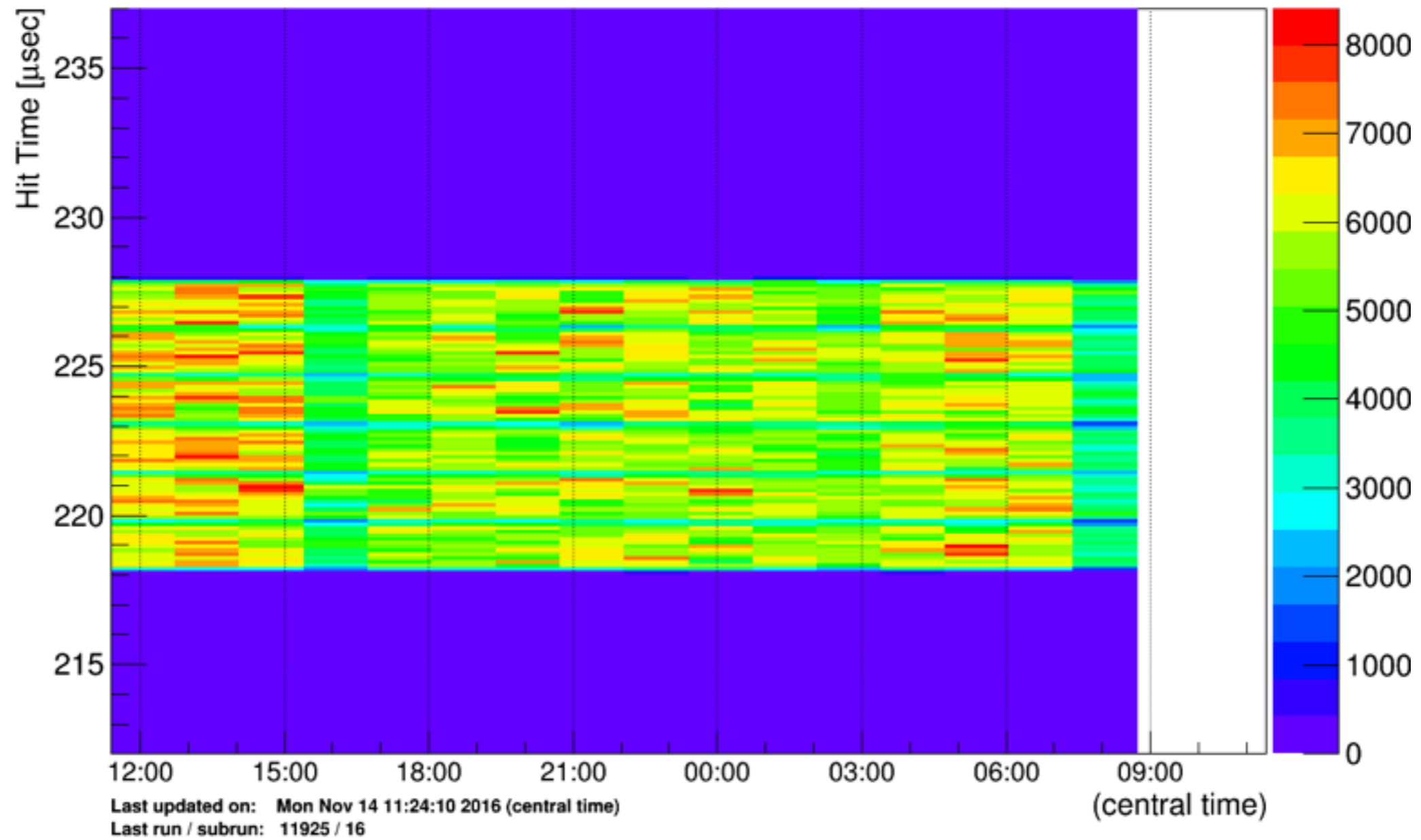
Far Detector Uptime



100% uptime since beam returned on 11/11

Near Detector Timing Peak (current)

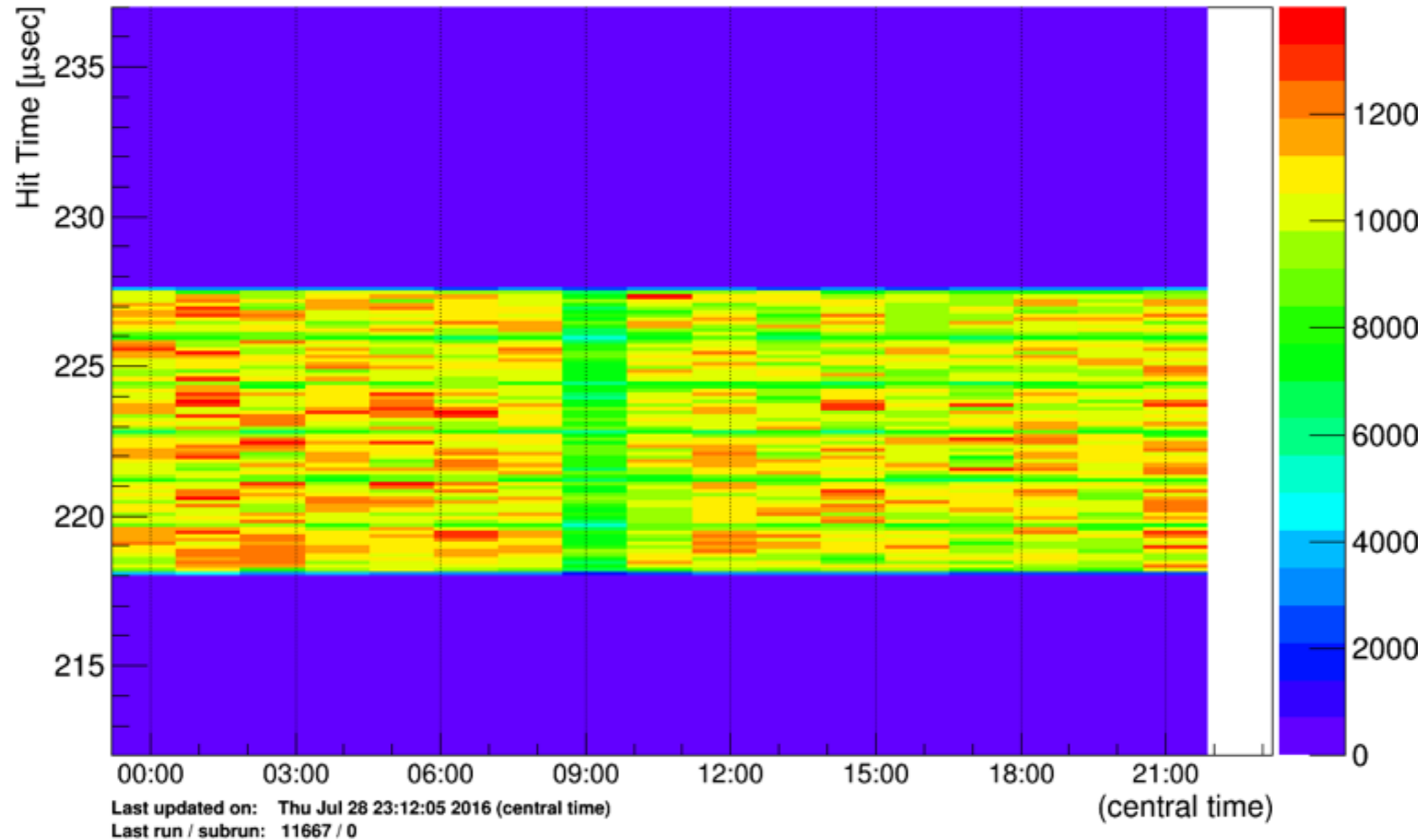
NuMI Time Distribution for All Hits vs. Time - partition 1



Beam routed from booster directly to Main Injector.

Near Detector Timing Peak (pre-shutdown)

NuMI Time Distribution for All Hits vs. Time - partition 1



Beam routed from booster through recycler, the batch spacing is 84 bunches rather than 86, so spill shorter by 188 ns.

Last Week

Average Jobs Running Concurrently [↗](#)

2162

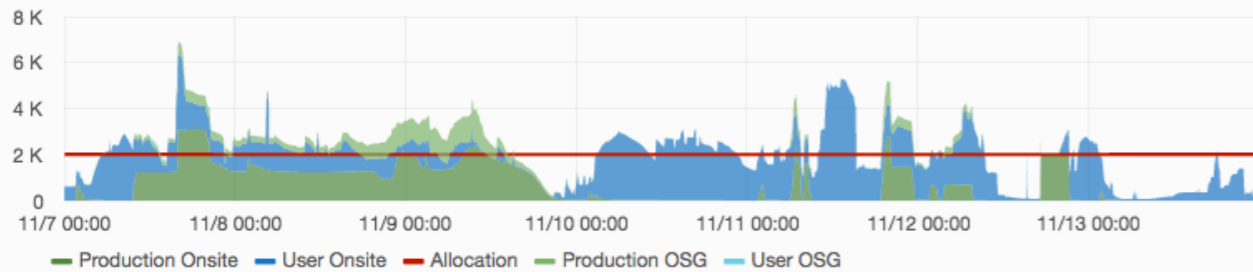
Total Jobs Run [↗](#)

110523

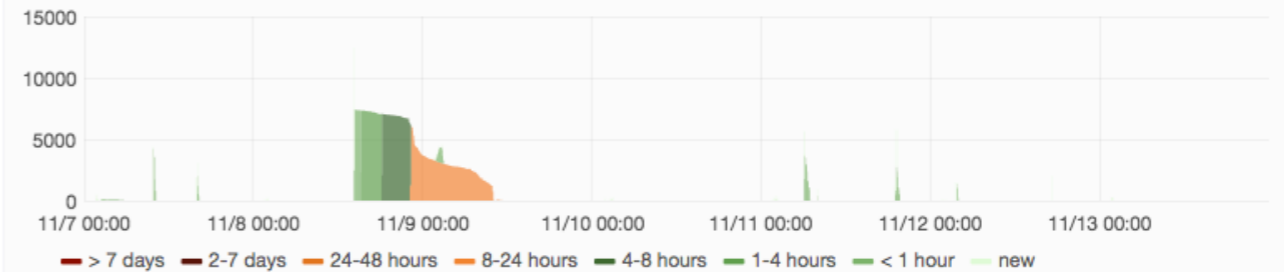
Average Time Spent Waiting in Queue (Production) [↗](#)

7.20 hour

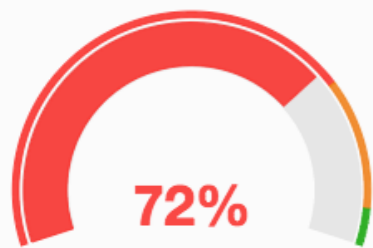
Running Batch Jobs



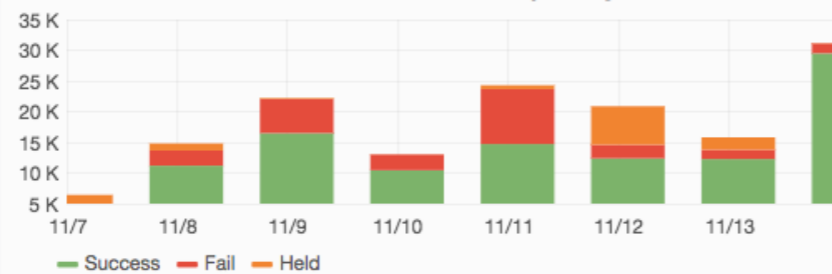
Queued Production Jobs by Wait Time



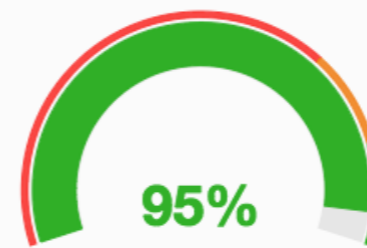
Job Success Rate



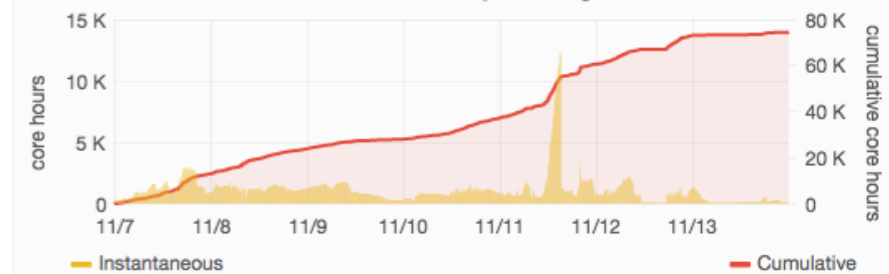
Job Success & Failures per Day



Overall CPU Efficiency [↗](#)



Total Time Wasted by Running Jobs



New Data Cataloged [↗](#)

33.9 TB

Total Data Cataloged [↗](#)

7.9 PB

- “Miniproduction” is getting underway.
 - As mentioned before, we expect a lower success rate as we work on trying out new features of our MC generation.