

NOvA Experiment Status

Gavin Davies

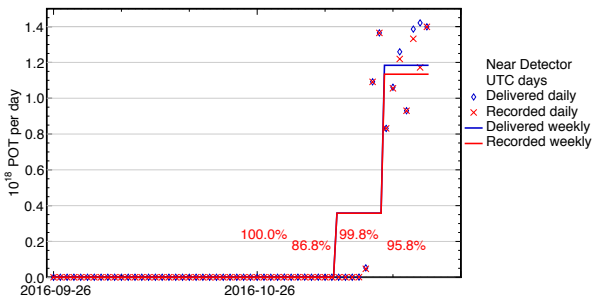
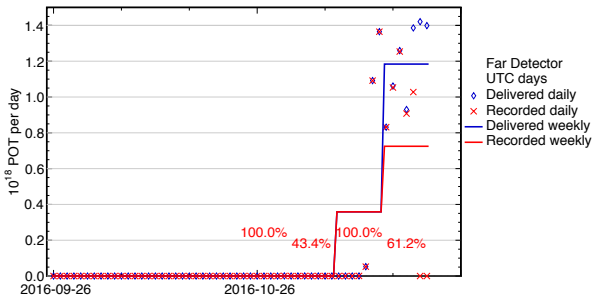
21 November 2016

Highlights from the week

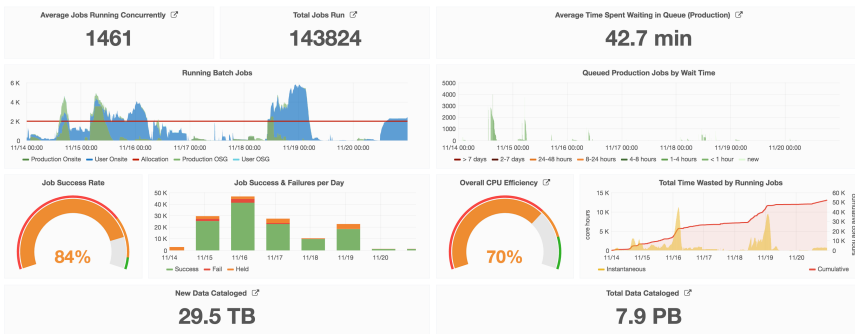
- Major snowstorm in northern Minnesota on Friday
- Partial power outage at the Far Detector
- A sequence of events involving a compressor failure led to overheating in the server room and a 135°F sprinkler discharging
- Have been down since 3:30pm Friday
- Detector was always in a safe state
- Recovery proceeded throughout the weekend and continues today
- We are moving carefully to bring things up in a way that:
 - Protects the computing equipment
 - Allows us to reconstruct more information about the chain of events that led to the incident.



- Far detector running well until snowstorm
- Excluding the weekend, well over 95% efficiency
- Near detector has been running well
- Down 5 hours Friday night due to chiller outage, but weekly efficiency still >95%



Last Week



- We were busy preparing our MC generation tag and trying out a new ntuple file format.
 - Both require many more human cycles than computing cycles.
- With luck we will be starting MC generation before the holiday.