



SCD Computing Summary

November 28th, 2016 through December 5th, 2016

Scientific Computing Metrics

Service Area	Service Offering	11/14	11/15	11/16	11/17	11/18	11/19	11/20	11/21	11/22	11/23	11/24	11/25	11/26	11/27	11/28	11/29	11/30	12/1	12/2	12/3	12/4
		MO	TU	WE	TH	FR	SA	SU	MO	TU	WE	TH	FR	SA	SU	MO	TU	WE	TH	FR	SA	SU
Distributed Computing	Batch Job Management (jobsub, condor_submit)																					
	User Jobs Monitoring (fifemon)																					
High Performance Computing	Wilson Facility Parallel and Tightly Coupled Batch Computing																					
High Throughput Computing	Batch Job Operations - CMS																					
	Data and Application Caching Operations																					
	Distributed Resource Provisioning Operations - CMS																					
Scientific Collaboration Tools	Electronic Logbook																					
	Redmine																					
Scientific Data Management	FTS (File Transfer Service)																					
	SAM (Sequential Access via Metadata)																					
Scientific Data Storage and Access	Active Archive Facility																					
	dCache Disk Cache Storage																					
	Enstore Tape Storage																					
Scientific Database Applications	Conditions Database																					
	Hardware Database																					
	IFBeam Conditions Database (IFBeamDB)																					
Scientific Linux Systems Engineering	Control Room System Management																					
	Experiment Online System Management																					
Scientific Production Processing	POMS																					
Scientific Software Infrastructure	SciSoft																					

Week of 11/28 - 12/4

No outages

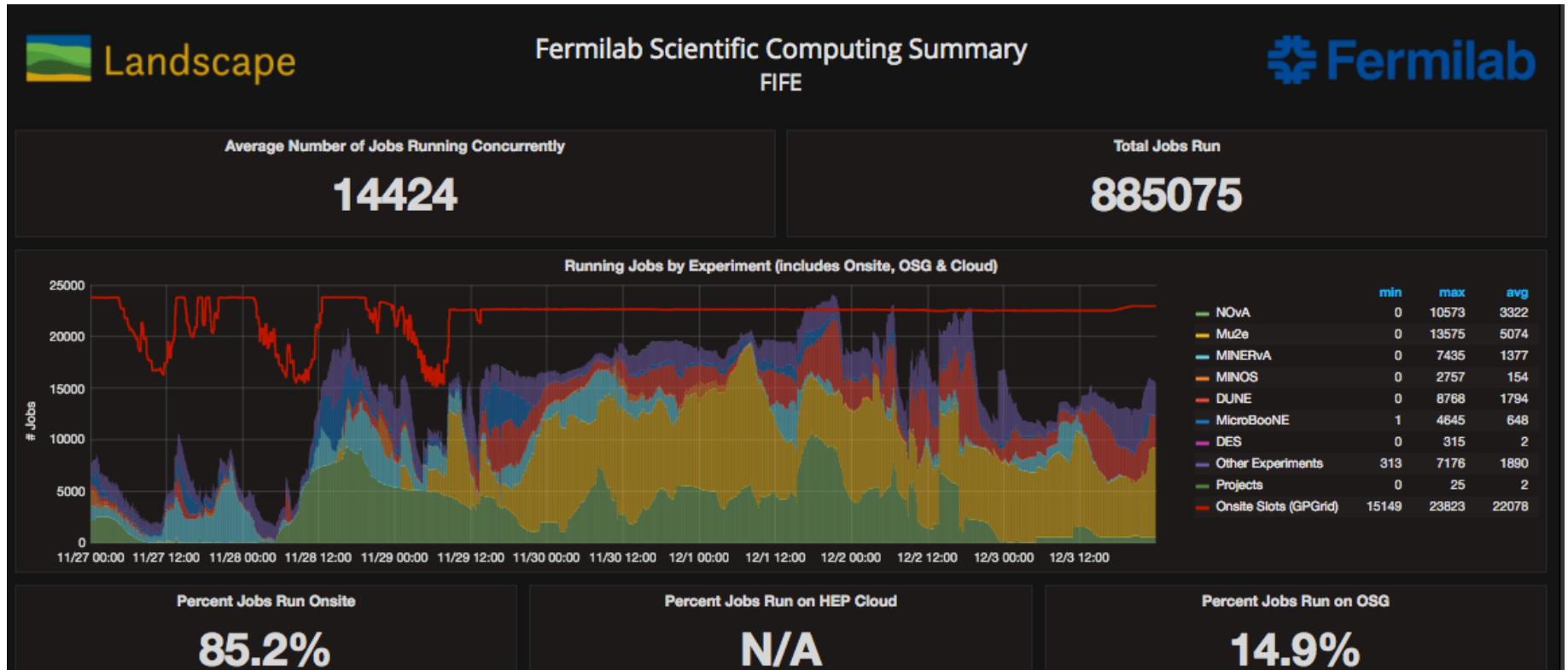
Announcements

Computing systems in LCC being relocated; Wilson cluster off for 2 weeks

Impact

- None Service met SLA
- Degradation Service is down for a few localized users
- Moderate Service is down for a moderate number of users
- Significant Service is down for large number of users /causes disruption to lab ops
- Extensive Service is down or causes serious disruption to lab operations
- External Service is down due to external service provider
- Scheduled Service is down due to scheduled outage

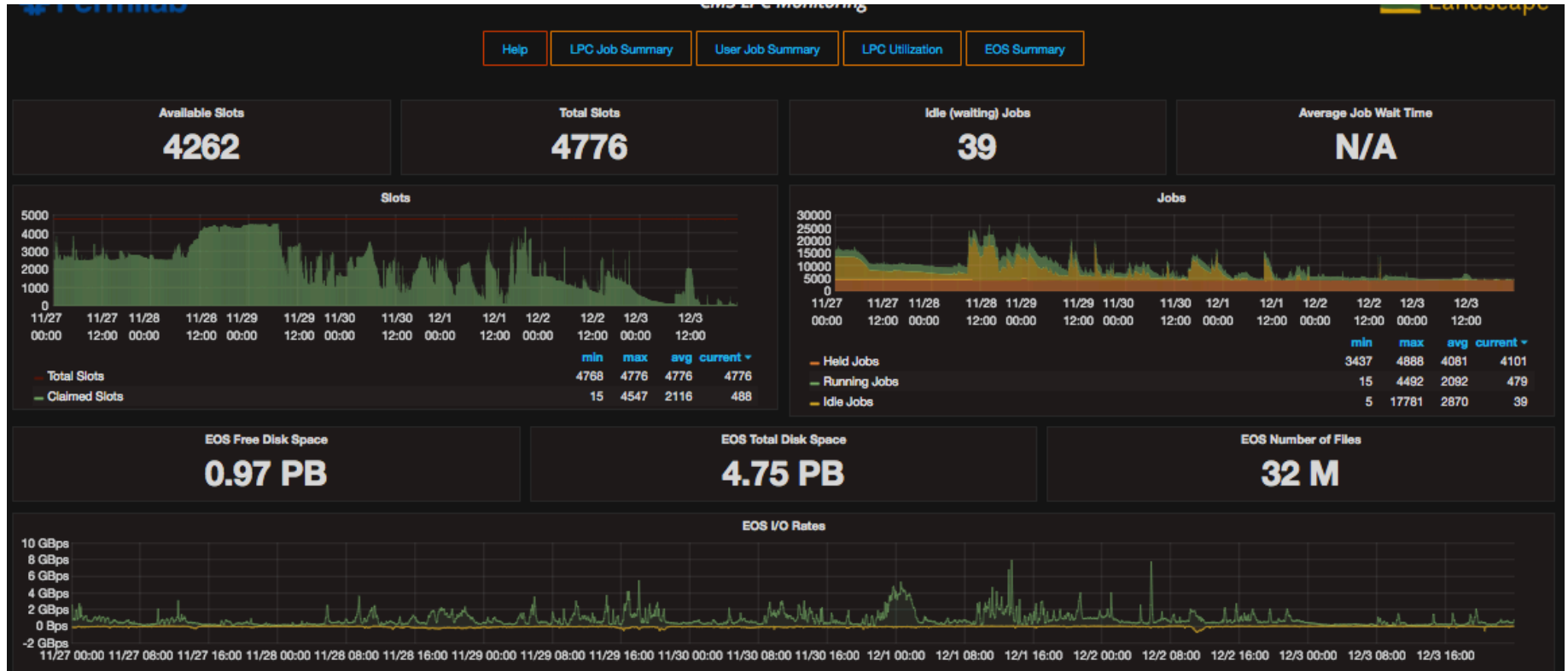
FIFE Operations



<https://fifemon.fnal.gov/monitor/dashboard/db/scd-summary-fife?from=now-1w%2Fw&to=now-1w%2Fw>

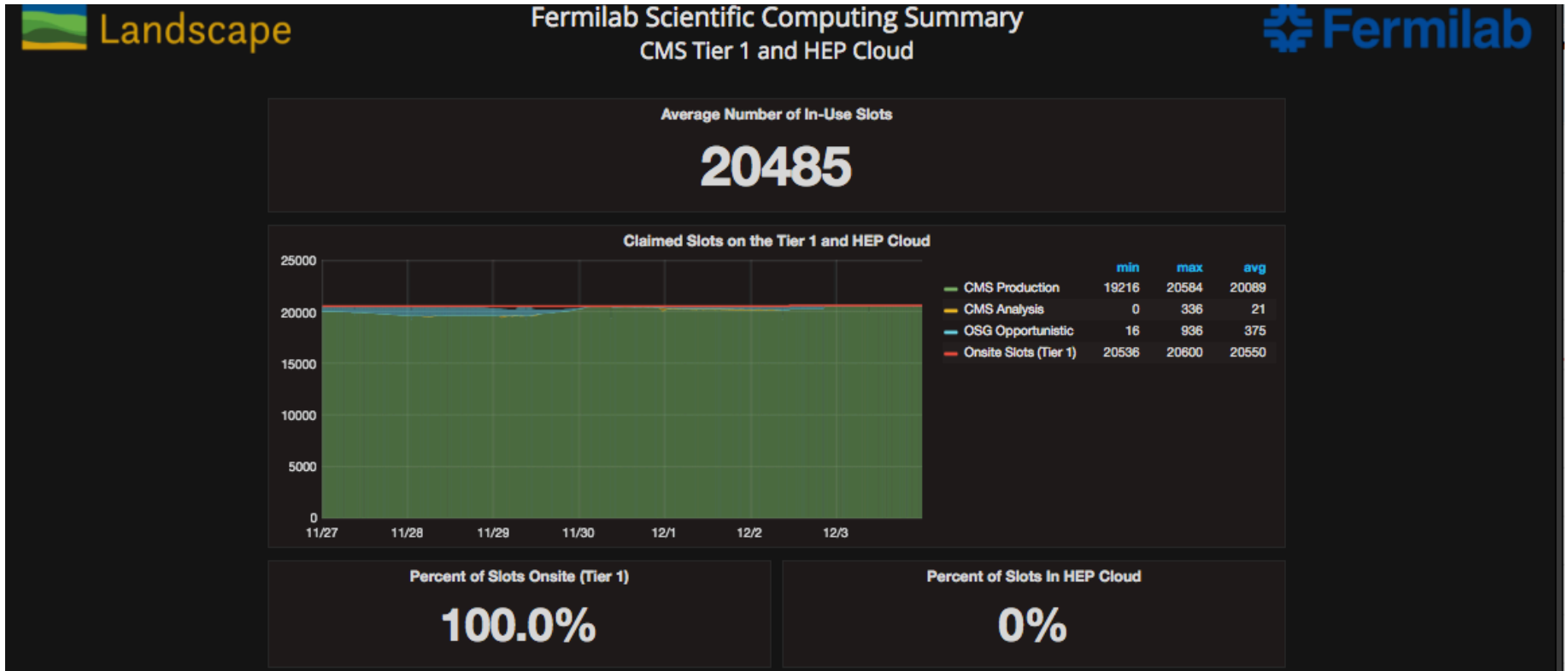
- Drop in red line (available resources) indicates lack of backpressure everywhere – Fermilab experiments and OSG stakeholders.

CMS LPC Operations



<https://landscape.fnal.gov/lpc/dashboard/db/lpc-summary?from=now-1w%2Fw&to=now-1w%2Fw>

CMS Operations



<https://fifemon.fnal.gov/monitor/dashboard/db/scd-summary-cms?from=now-1w%2Fw&to=now-1w%2Fw>