

Status of E906/SeaQuest

Andrew Chen
UIUC

For the SeaQuest collaboration

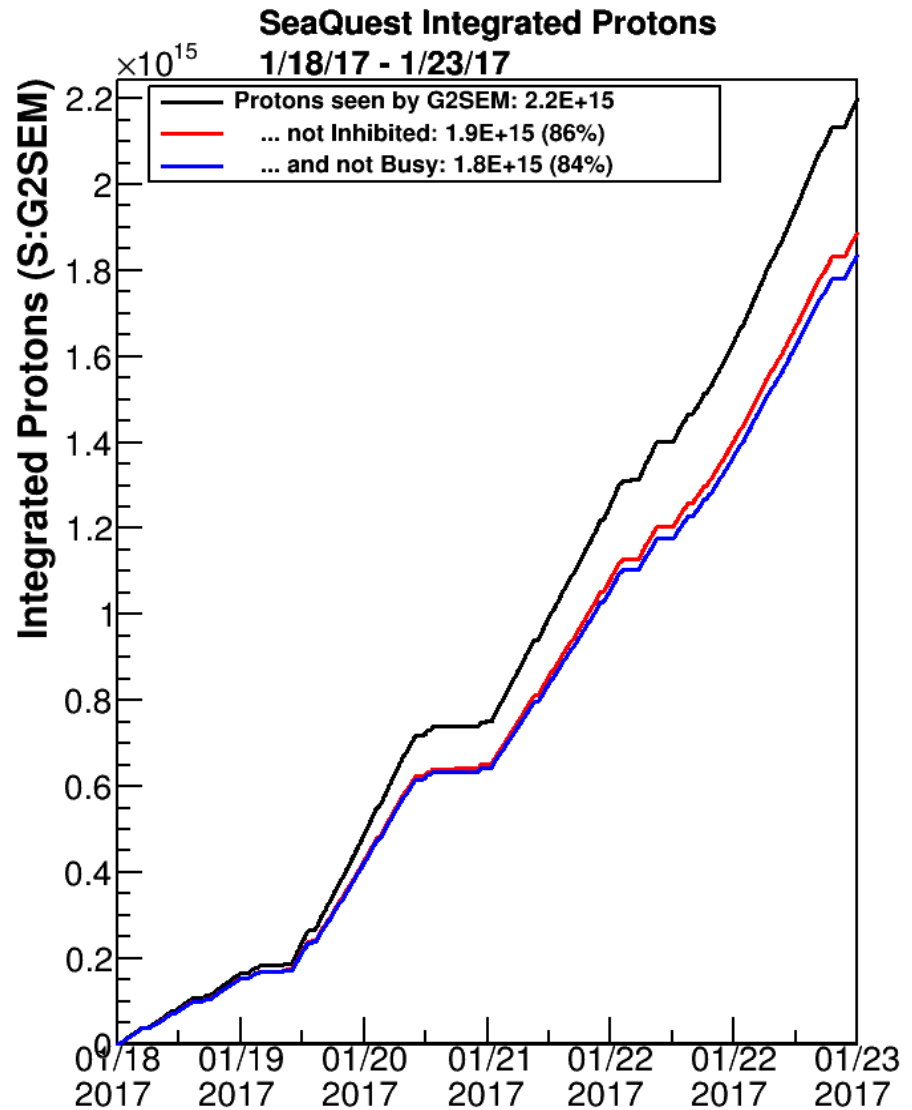
Status

- Thanks for the beam
 - G2SEM is broken so does NM3SEM. A replacement is in place. Calibration?
 - We have our own beam counter which we can rely on to reference back to the data we had already taken. There is also QIE.
- DAQ is working.
 - Dead time is about 4 times shorter.
- New decoder is working.
- D2U tripped before the weekend.
 - Decided to pull it out.
- No LH2/LD2 targets.
 - Thought we had a full bottle of H₂ but when put it on it was empty despite the label say FULL.
 - LD2 was filled for few days but lost late in the night of Sat.
- Taking data with solid targets only.

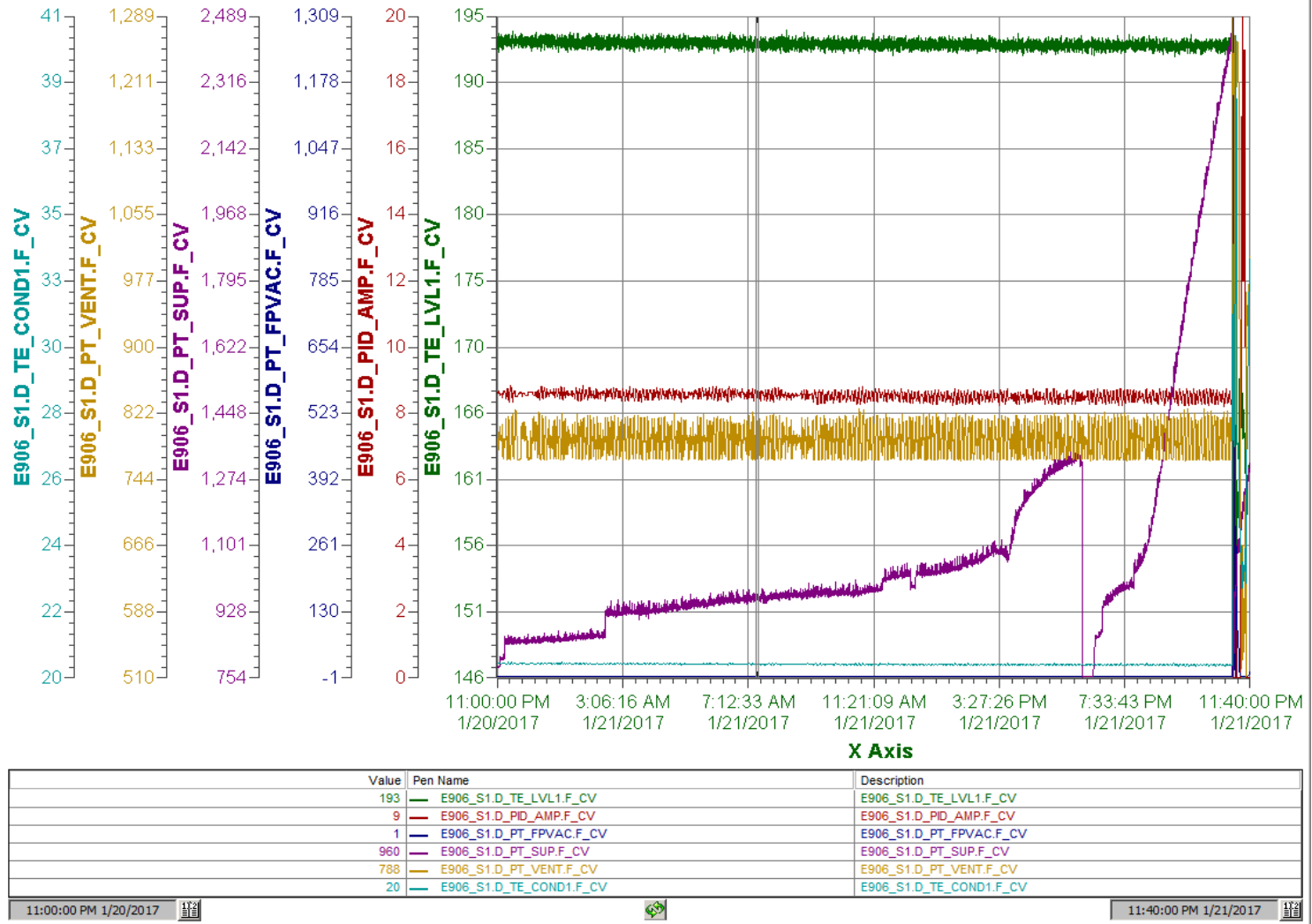
Proton on target

Note that the G2SEM is no longer the G2SEM as it used to be.

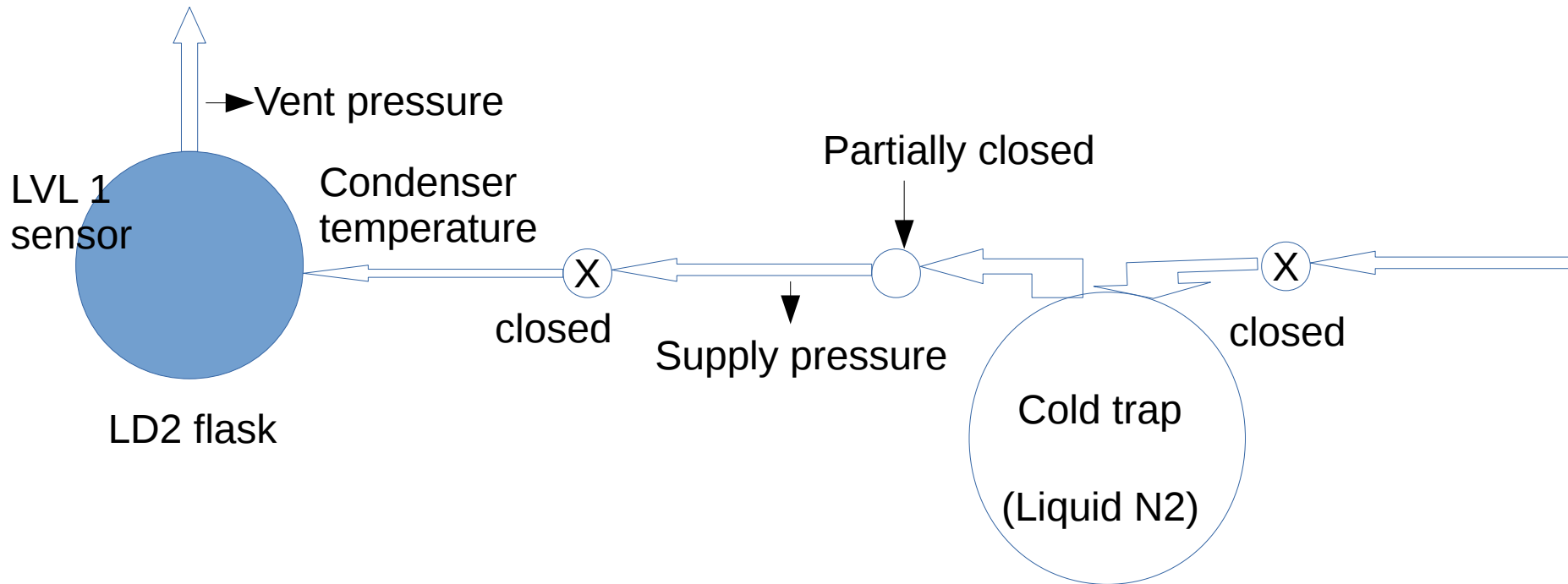
It is readout from the new wire chamber for beam monitoring.



Target status

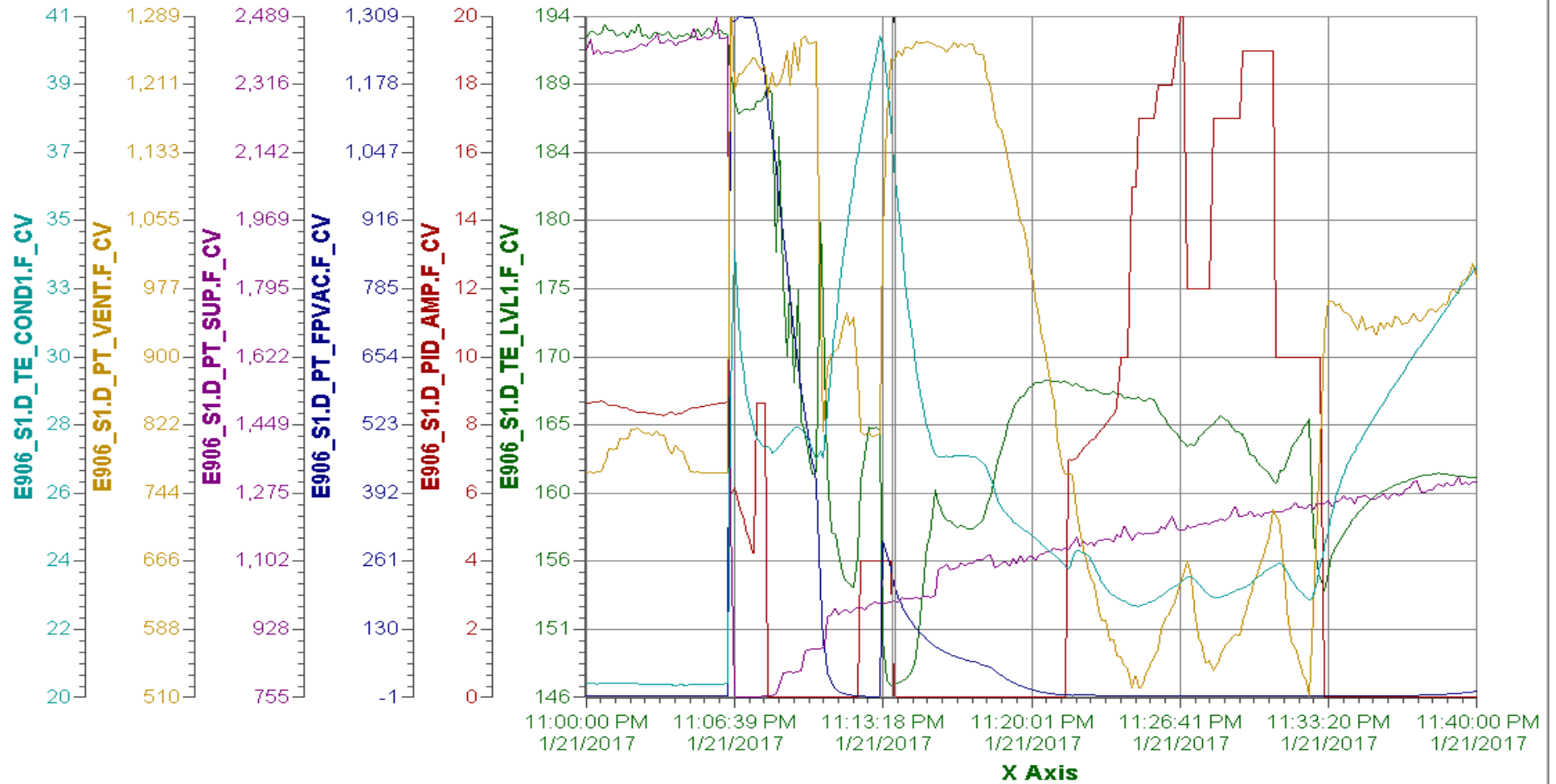


Set up of our liquid target



- One night earlier before we lost the LD2 the Supply pressure acted up due to the material inside the Cold Trap expanding when LN2 was all gone.
- Since the valve between the Supply gauge and the flask was closed this didn't affect the LD2 at all.

- At the time when it happened, ...



Value	Pen Name	Description
147	E906_S1.D_TE_LVL1.F_CV	E906_S1.D_TE_LVL1.F_CV
0	E906_S1.D_PID_AMP.F_CV	E906_S1.D_PID_AMP.F_CV
215	E906_S1.D_PT_FPVAC.F_CV	E906_S1.D_PT_FPVAC.F_CV
999	E906_S1.D_PT_SUP.F_CV	E906_S1.D_PT_SUP.F_CV
1,239	E906_S1.D_PT_VENT.F_CV	E906_S1.D_PT_VENT.F_CV
36	E906_S1.D_TE_COND1.F_CV	E906_S1.D_TE_COND1.F_CV

- At around 11:05 PM Sat., the condenser was acting up making the temperature warmer than it was supposed to be.
- The Vent pressure rise up quickly to above 1200 torr, opening up the release valve and caused the D2 gas to escape outward.
- Soon the LD2 level was below the level 1 sensor.
- We have no D2 gas left to top it off. (Order in place.)
- It was hard to stabilize it.
- So we let go the LD2.
- Waiting for the arrival of H2/D2 gas.