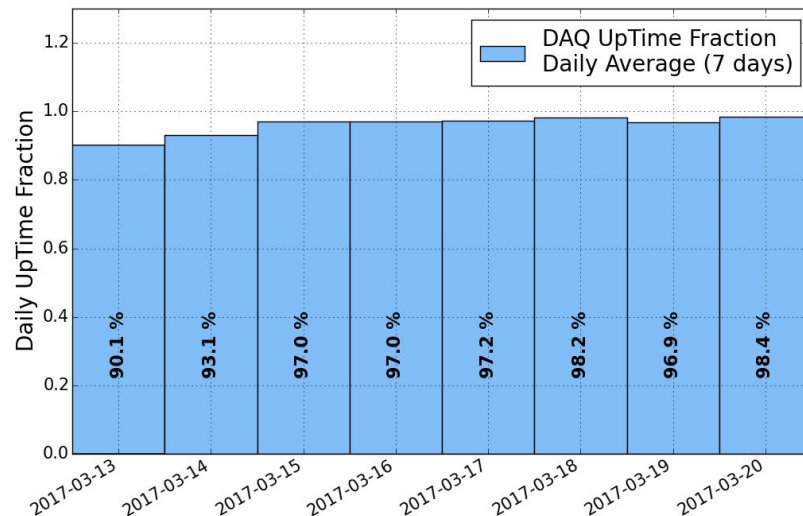
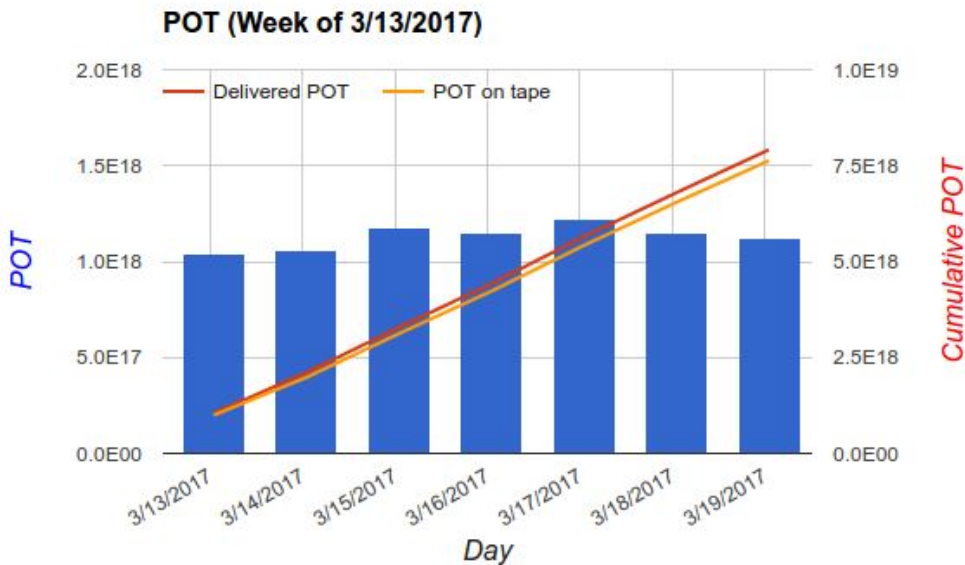


MicroBooNE AEM Report

Corey Adams

3/20/17

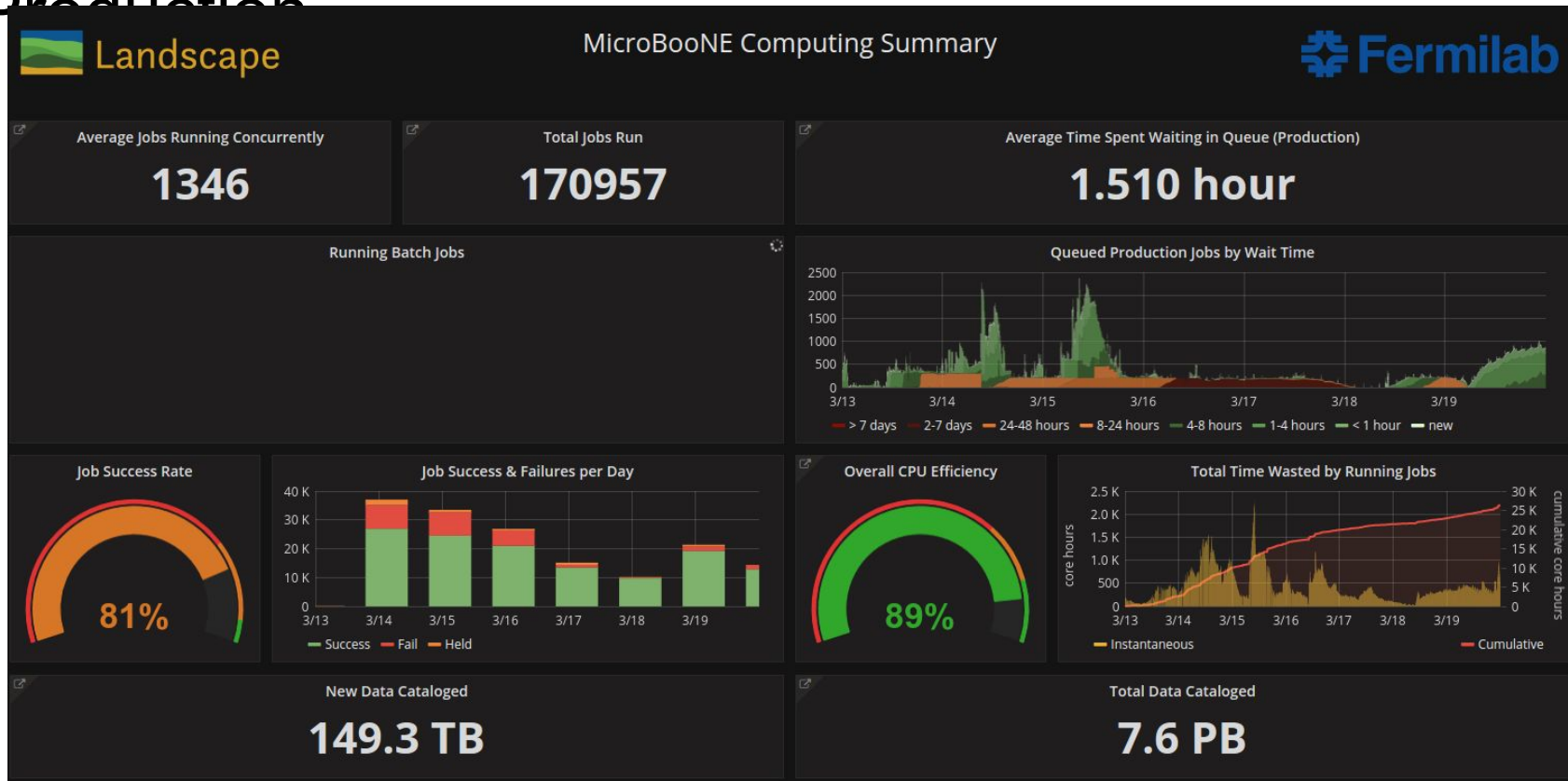
Beam Statistics



Cummulative POT: 7.6e18 on tape, 7.9e18 delivered (96% POT uptime)

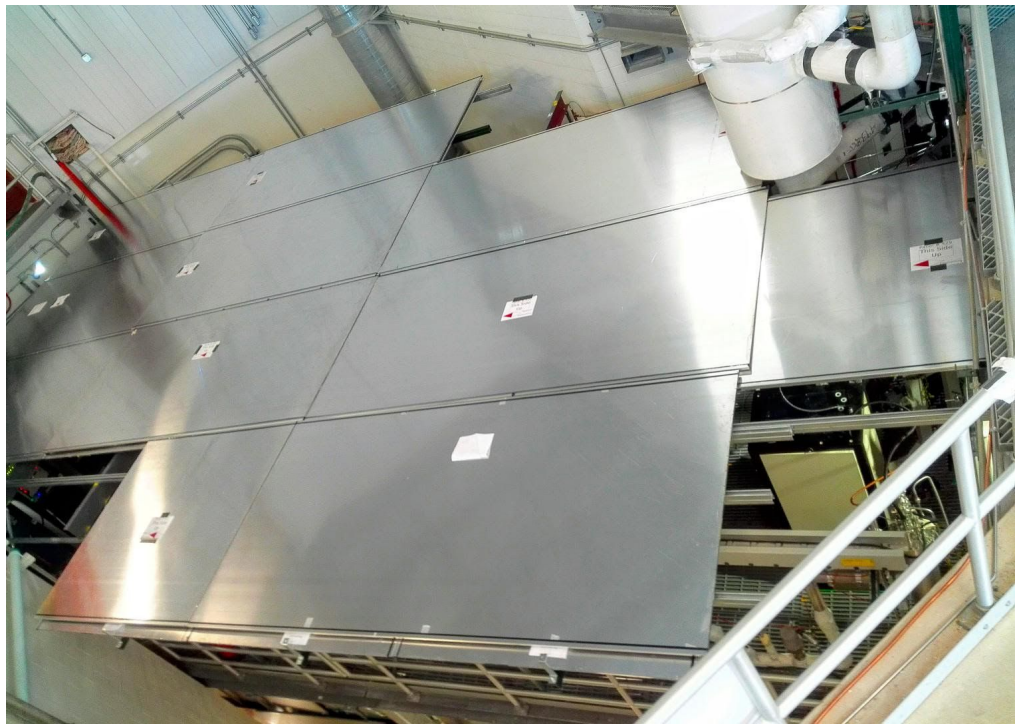
Computing Summary - Large Monte Carlo

Production



Other topics

- Detector has been very stable since February ended.
- Cosmic Ray Tagger top panel installation has finished installation and testing of panels, proceeding with cabling and commissioning of system
 - New fire suppression system installed.
 - Thank you for technician support necessary for the successful installation of this system!
- Last week, MicroBooNE held it's annual software retreat in Cincinnati.
 - Work on analyses and offline reconstruction tasks, very successful and fun workshop.



Installed CRT Top Panels