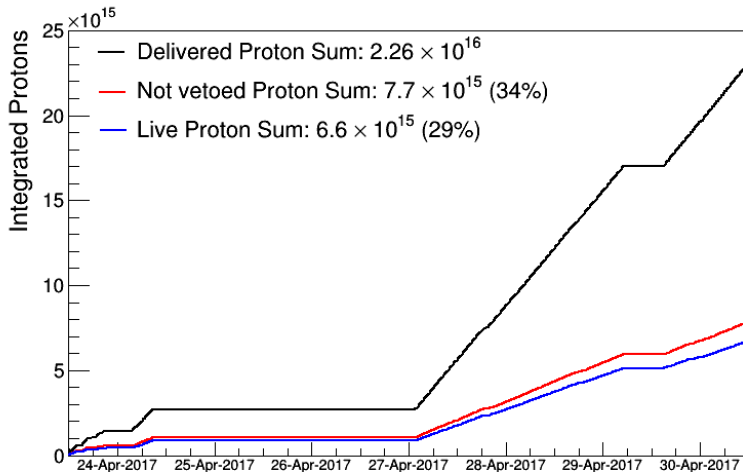


# E906/SeaQuest Report

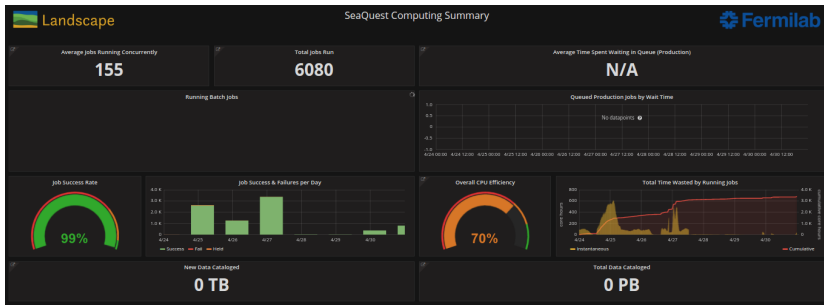
Michelle M. Medeiros  
for the SeaQuest Collaboration



May 1, 2017.



# Computing usage.



## General status.

- The QIE readout failed → replaced the board. We later figured out that the issue was due to a corrupted registry file. We fixed that and went back to the original board.
- Hodoscopes: tweaked the HV of the replaced PMT bases and re-analyzed the HV of all hodoscopes in station 2 to make sure they're efficient after the replacement of the power supply a few weeks ago.
- Station 1: noisy channels resolved with a simple power cycle.
- Some ROC crashes resolved by power cycle.
- Electrical work done for the dark photon trigger.
- Chambers, hodoscopes, DAQ → working well.