

---

# Sample FRP beam and clips for Drift cage

FRP I beam used for Drift Cage. Manufacturer Rochling different from SP, never tried in LAr.

Received last week a sample (about 50 cm length) sent from Jae. In principle no issues it is standard FRP, however we want to make sure it is suitable for use.

What we want to do:

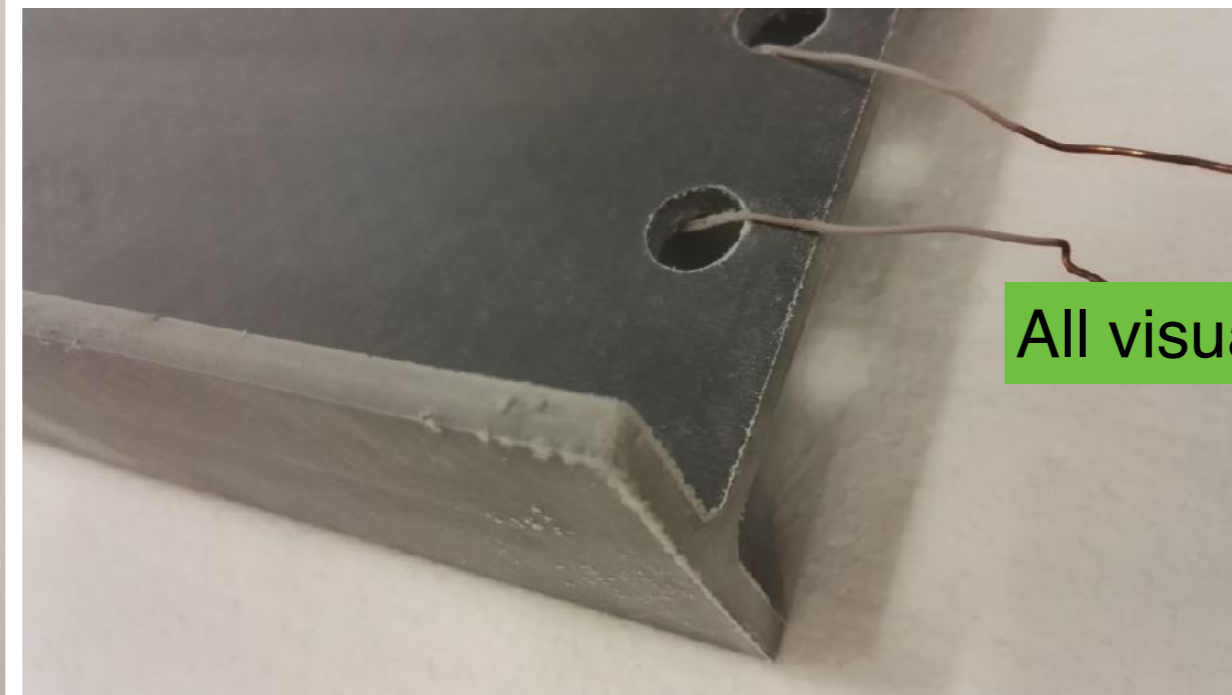
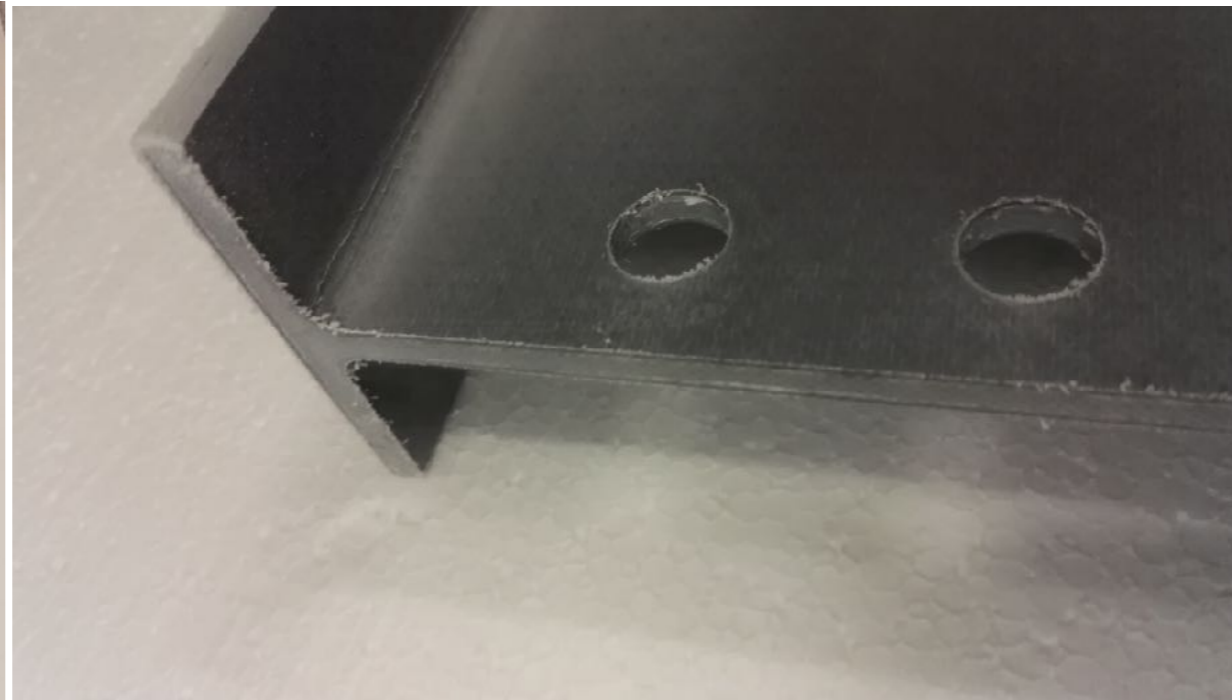
- shock cool it in LAr (done yesterday)
- make a stress test to observe the breaking point (Zurich ~next week)

presence of residual glass fibres around hole due to drilling. Can the company take care of cleaning them?



Repeated 3 times:

Dipped in LAr, for a few minutes, remove wait to warm up. Visual check.



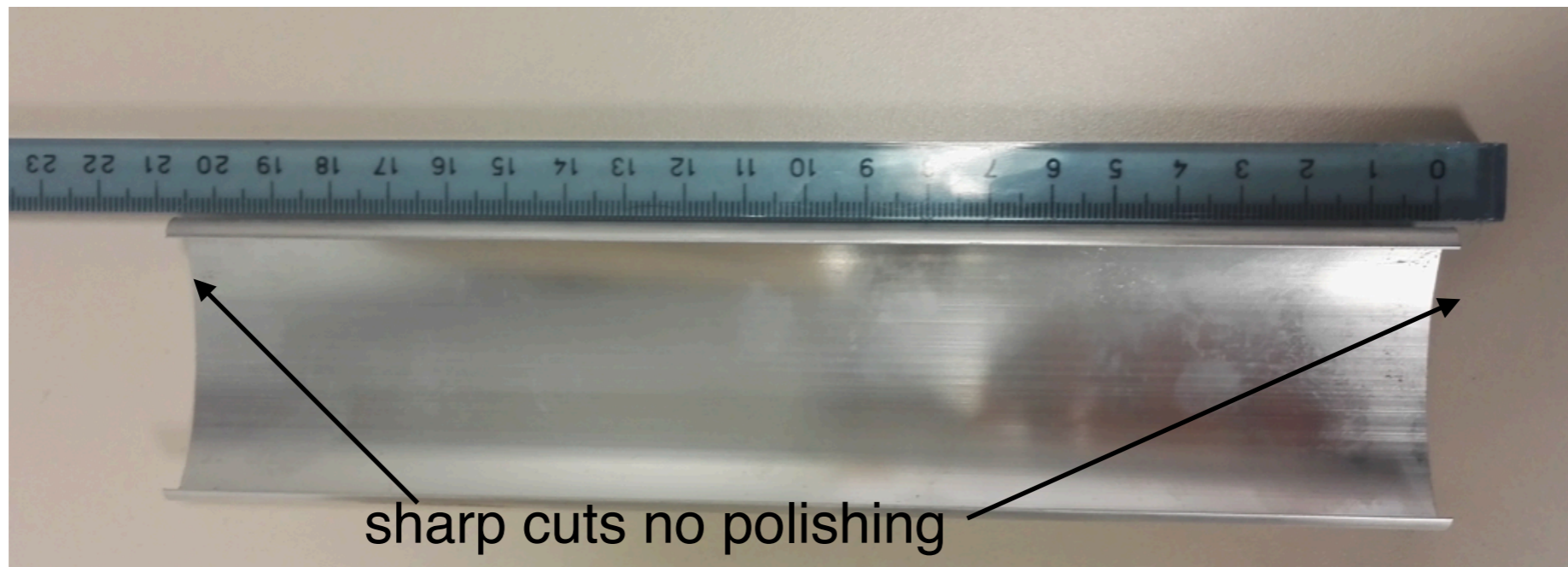
All visual checks were ok.

Also left in LAr during the night.

Yesterday we also received 2 sample clips from MIFA (the producer for the profiles based in Netherlands). Those samples are 20 cm long (the final ones will be 7 cm).

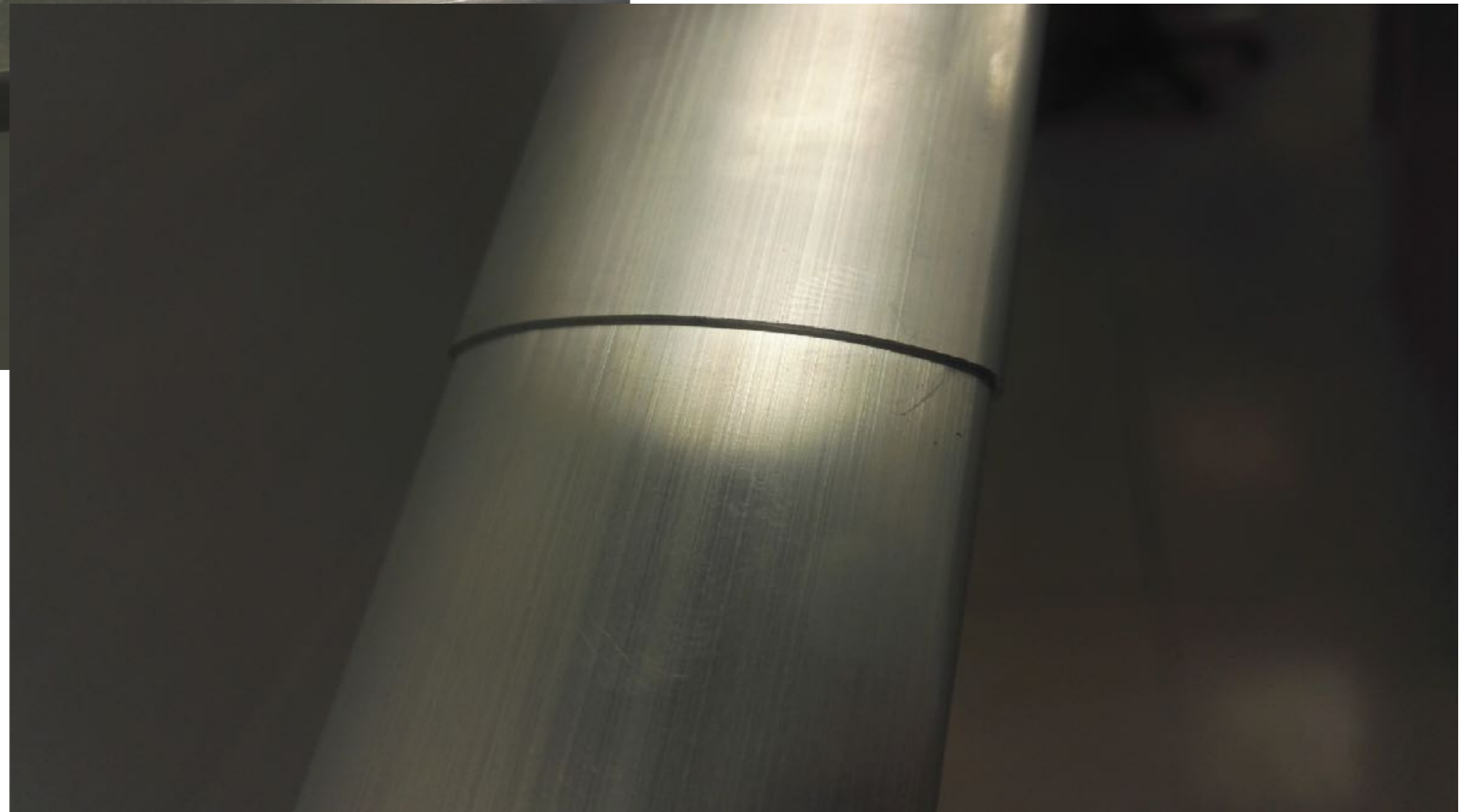
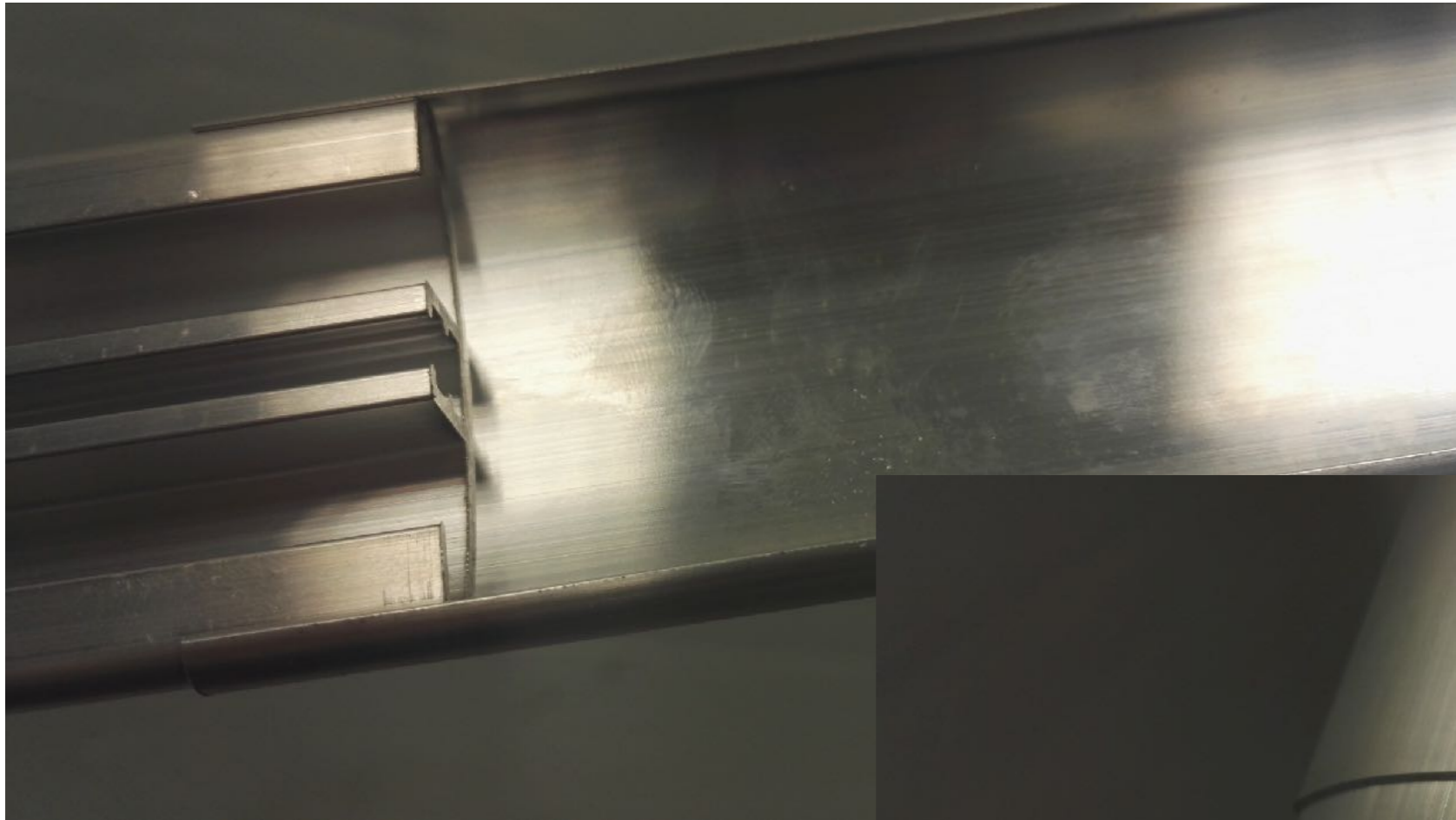
-Thickness 0.7 mm within tolerance.

-The edges were not rounded/polished->crucial for HV that they are. Already informed MIFA.

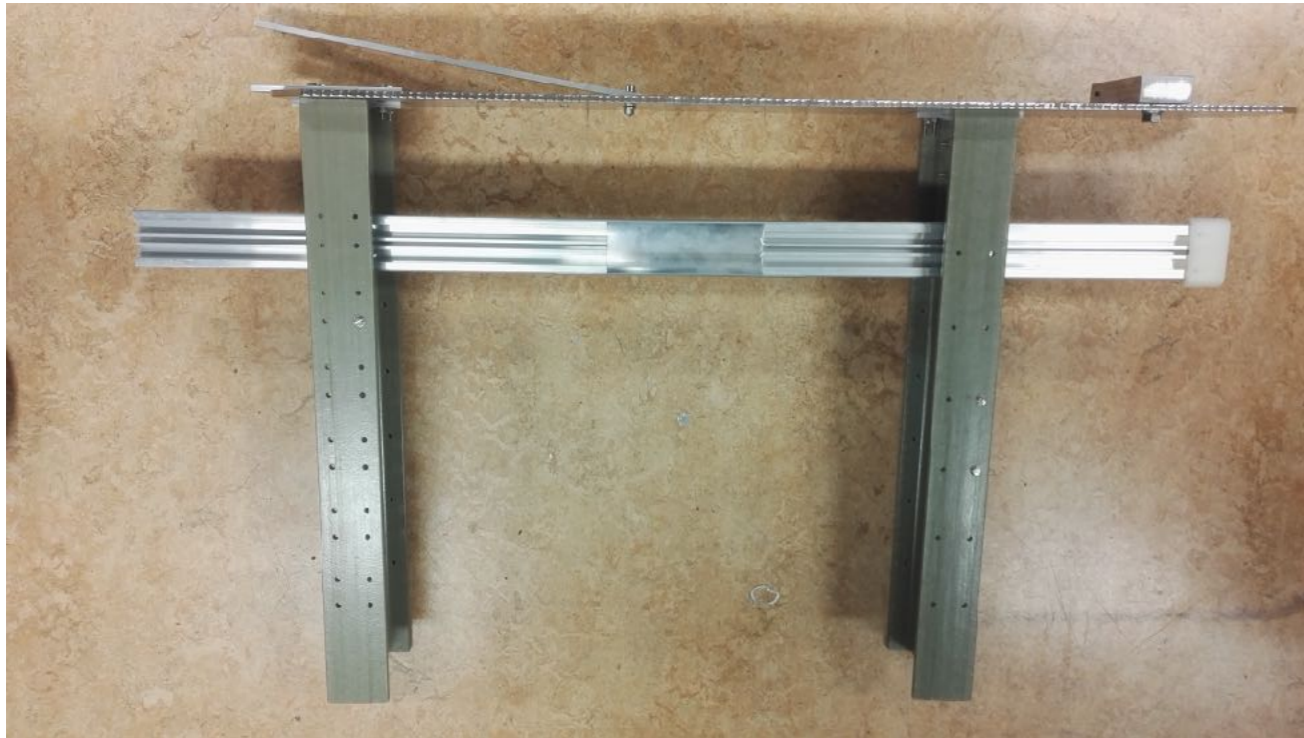


Had a first try at clipping and un-clipping:

It works rather smoothly, easy to clip. Unclipping is possible but requires a bit more force. However we do not see a scenario where we would need to unclip during installation.



Tried clipping/un-clipping on the proto



Also dipped in LAr.

