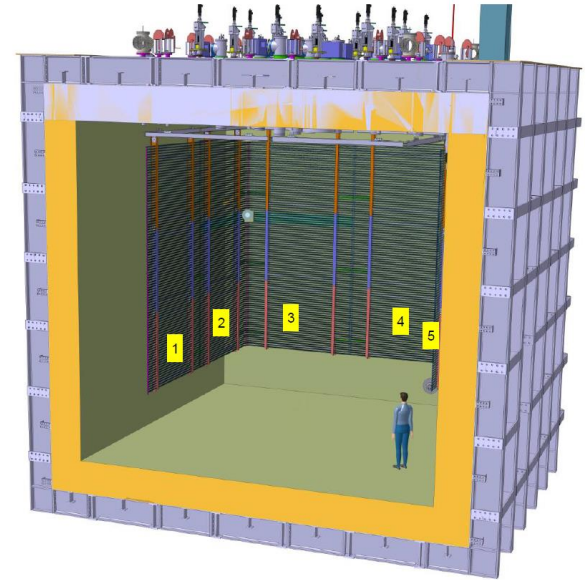


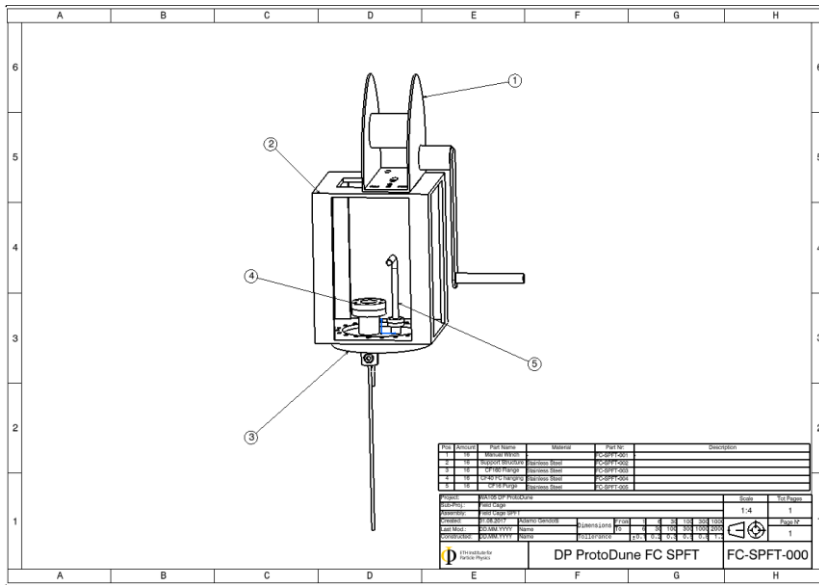
Assembly TEST for Drift Cage

- 3 complete modules: One complete side + corner



- This requires:
 - 6 x FC-SPFT Ready Complete
 - 3 x Hanging system SS I-beams + Connection System (wires and FC modules)
 - 6x Manual Winch
 - 98 slipnut for corner
 - 98 slipnut for straight part
 - ~200 profiles clips
 - Kind of carriage for positioning of the sub modules inside of the Cryostat (under design)
- } UTA is investigating for the full amount

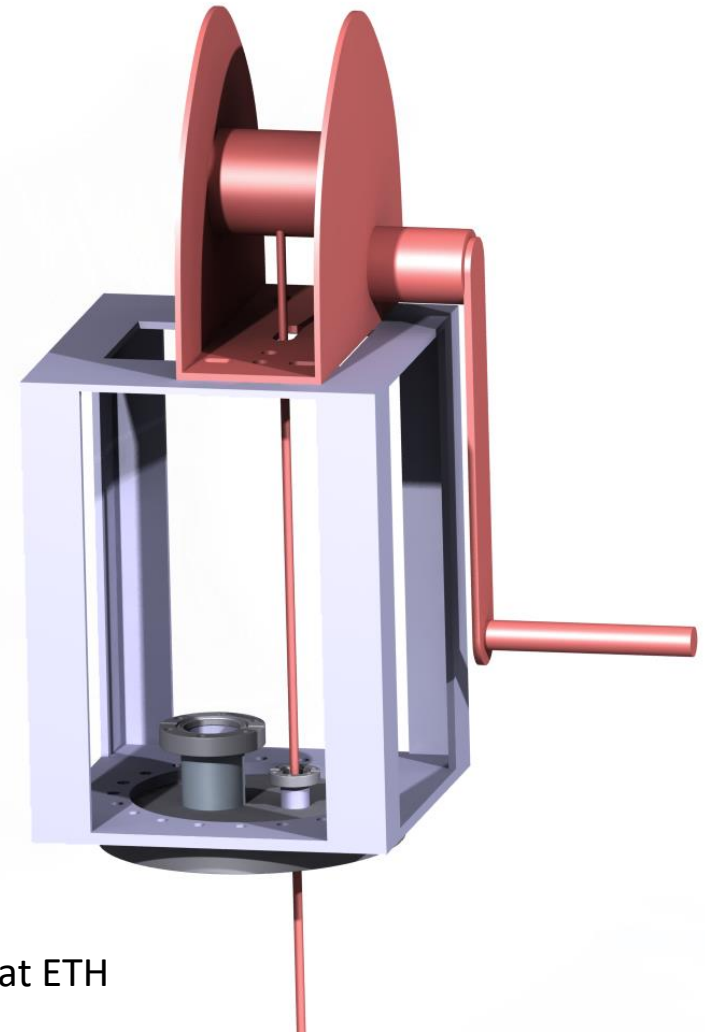
- Field Cage SPFT:



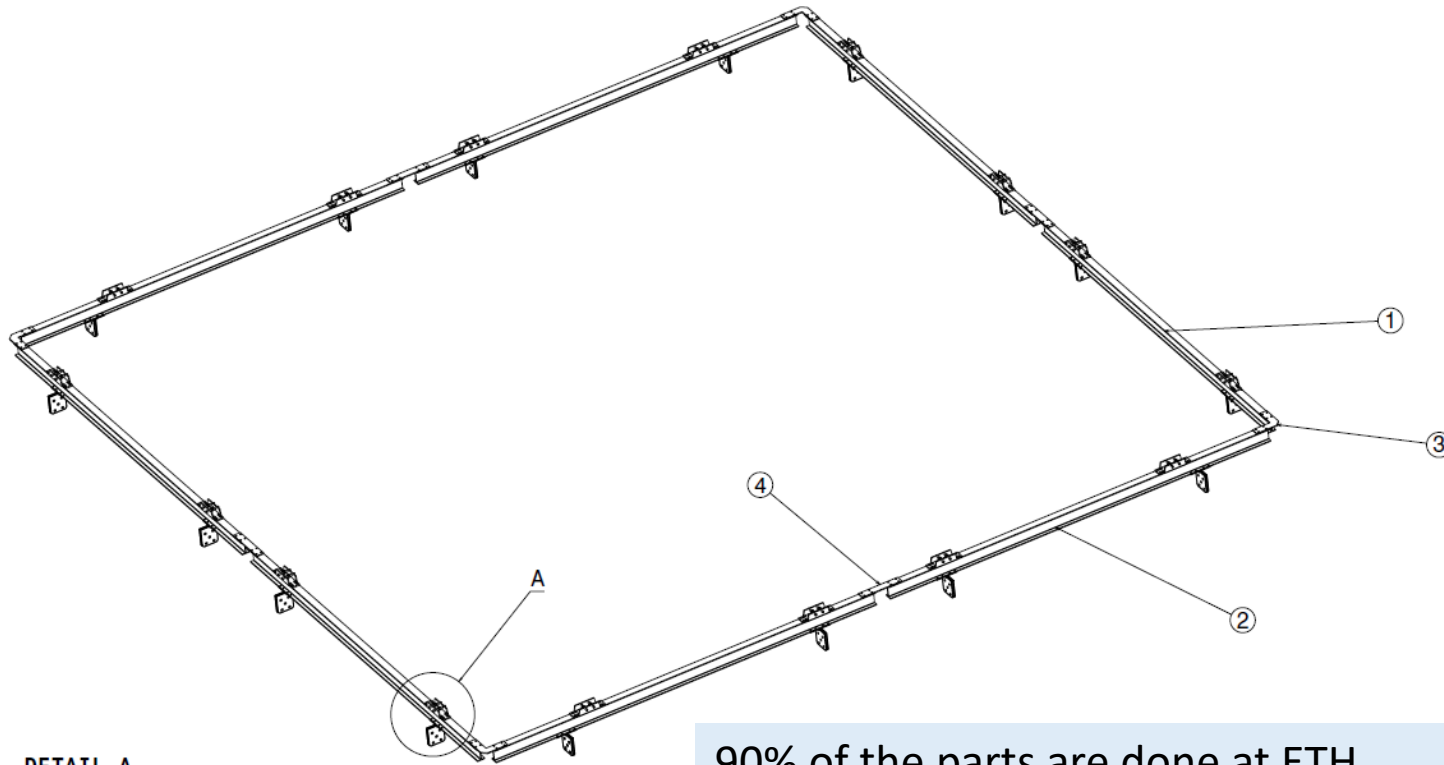
16 x Manual Winch: waiting offer (~245 CHF each)

16 x Support Structure: waiting for offer (~2500CHF for all 16 parts)

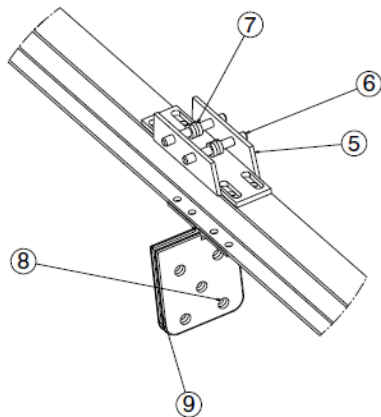
16 x CF160 Flange + CF40/CF16 Chymney:
Waiting for Vacom offer welding will be done at ETH



- Field Cage Hanging System:



DETAIL A
(1:3)



90% of the parts are done at ETH
- Waiting just few offer to order the various material

Pos	Part Name	Part Number	Material	QTY 8 Modules	QTY Tot. 1 Mod. Spare	Description
1	SS I-Beam 1	DP-FC-101	SS	4		IPE 100
2	SS I-Beam 2	DP-FC-102	SS	4		IPE 100
3	Corner Fixing Reinforce	DP-FC-103	SS	4		
4	Straight Fixing Reinforce	DP-FC-104	SS	4		
5	Hanging Main Body	DP-FC-105	SS	16		
6	Insert Rod	DP-FC-106	SS	32		
7	Wire Regulating Cylinder	DP-FC-107	SS	32		
8	Left L-Profile	DP-FC-108	SS	16		
9	Righth L-Profile	DP-FC-109	SS	16		
10	SS inserts	DP-FC-110	SS	80		
11	Bolts and Nuts List	DP-FC-111	SS			

Project:	ETH Zürich	Scale:	1:12
Author:	ETH Zürich	Drawn:	ETH Zürich
Checked:	ETH Zürich	Approved:	ETH Zürich
Part No.:	DP-FC-100	Page No.:	1
			DP-FC-100