

State of the OSG - Council Chair's Perspective

David Swanson, Director, Holland Computing Center
University of Nebraska-Lincoln

Collaborative Vision

- Across the nation, **institutions invest into research computing to remain competitive**
- **Science is a team sport**, and institutions with an island mentality will underperform
- **Integration is key to success**
- **OSG provides services to advance this vision**

NU Strategic Framework

- The University of Nebraska will pursue excellence [in] regional, national and international ... research ...
 - Increase external support ...
 - Increase undergraduate and graduate student participation ...
- Encourage ... *interdisciplinary, intercampus, inter-institutional and international collaboration*
- *Invest [campus] resources ... to build capacity and excellence in research*

Collaborative Vision

- Nebraska as an **institution invests into research computing to remain competitive**
- **NU Science is a team sport**, and institutions with an island mentality will underperform
- **Integration is key** to success
- **OSG provides services *to enable NU* to advance this vision**

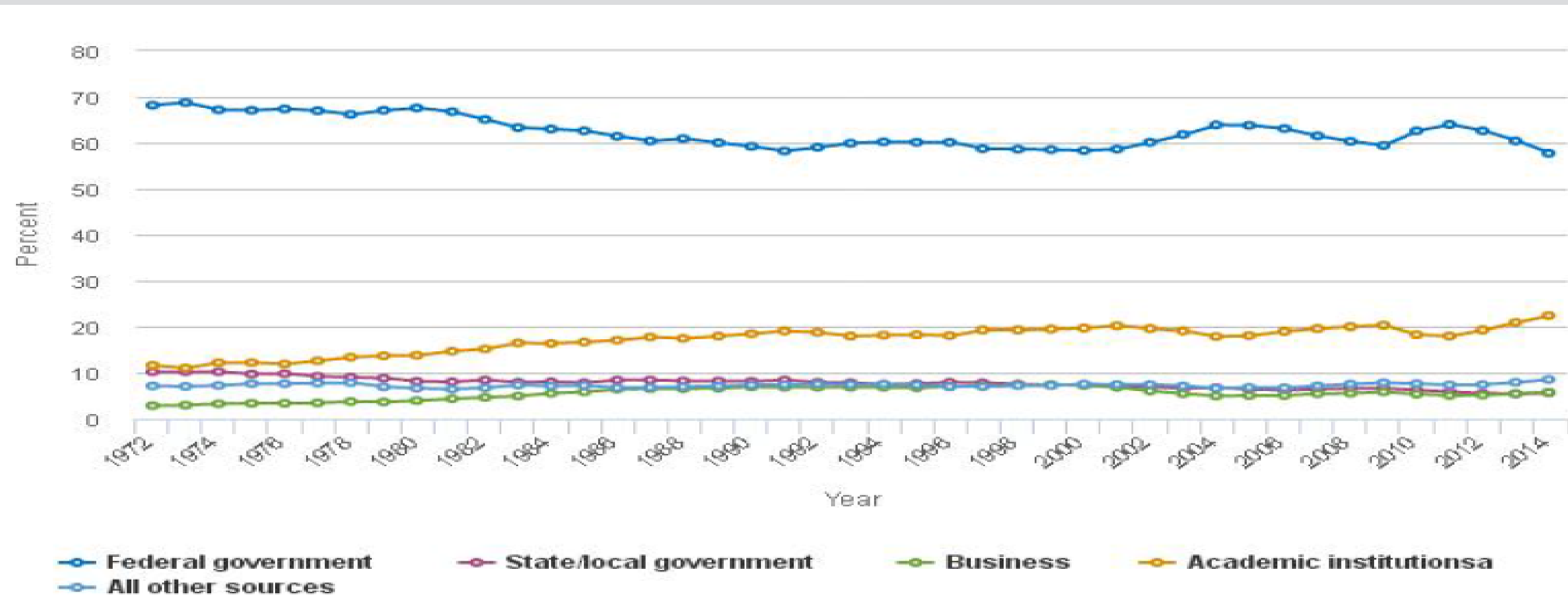
Trends in Funding Academic R&D in Science and Engineering



National Science Board | **Science & Engineering Indicators 2016**

Figure 5-1

Academic S&E R&D expenditures, by source of funding: FYs 1972–2014



^a Academic institutions' funds exclude research funds spent from multipurpose accounts.

SOURCE: National Science Foundation, National Center for Science and Engineering Statistics, Higher Education Research and Development Survey.

Science and Engineering Indicators 2016

Each green dot represents a cluster registered in OSG

Why Collaborate with OSG?

Dana Brunson, OSU

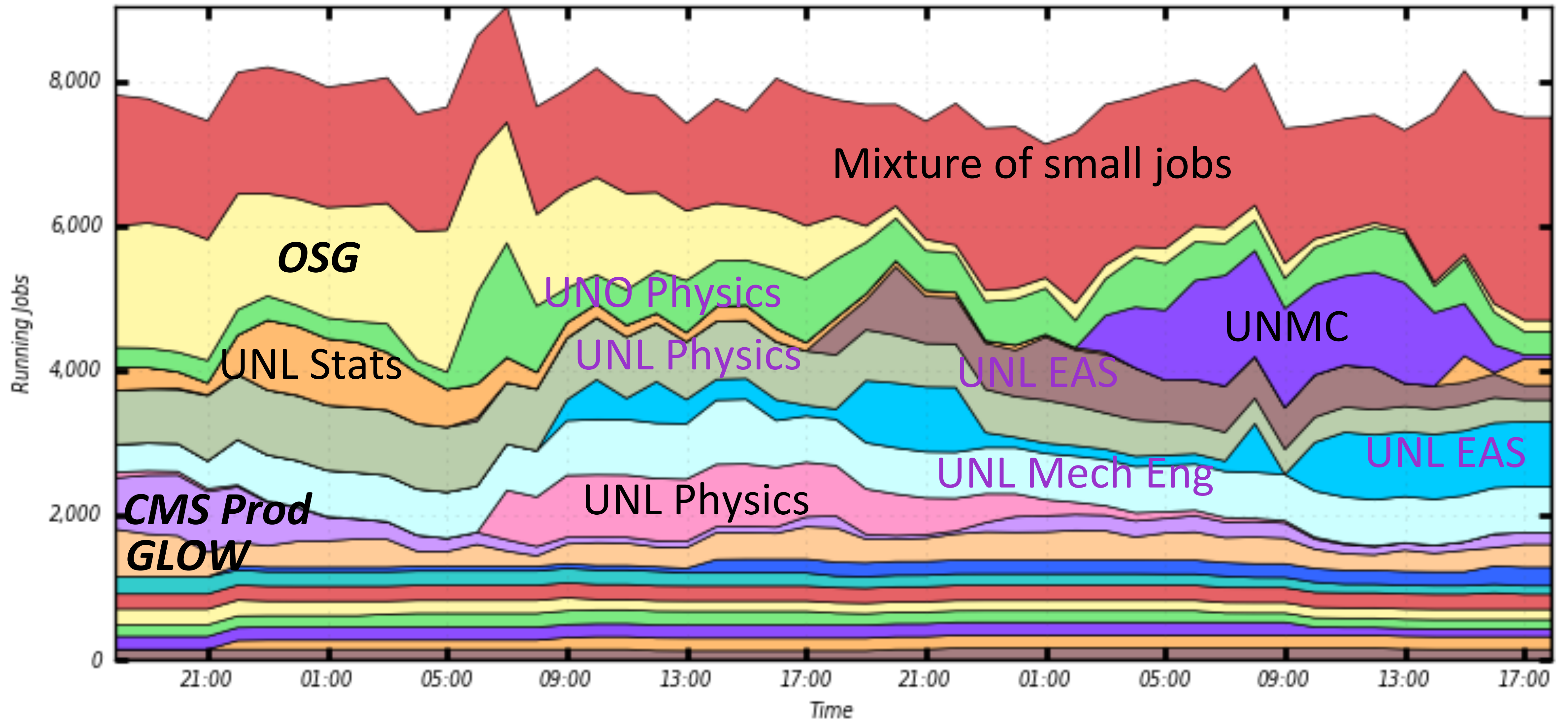
- Assistant Vice President for Research Cyberinfrastructure
- Campus Champions Lead
- “The reason we share is because we want to **get the most impact possible out of our resources**. OSG helps us do that with extremely low labor cost while **maintaining priority for our local users**.”



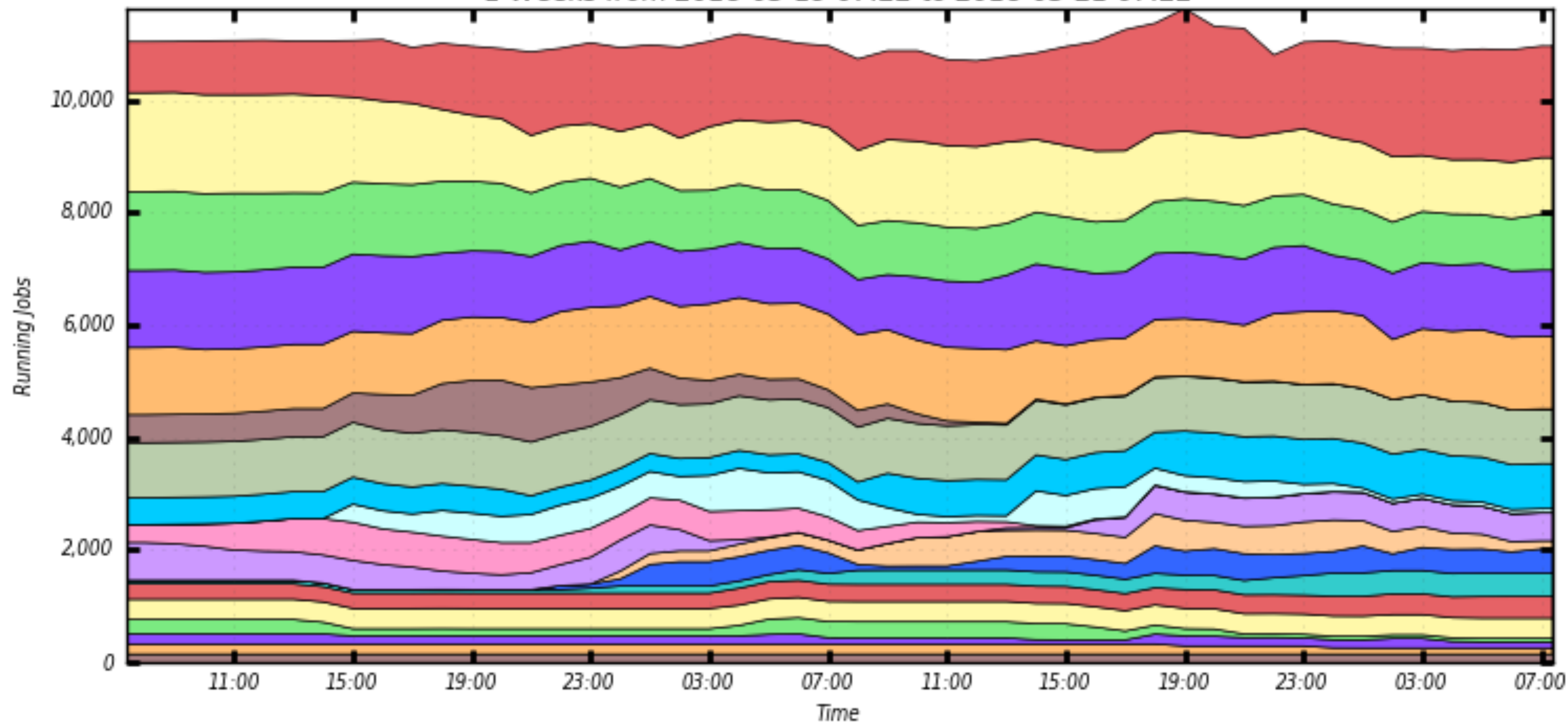
Local Ownership

- Control collaborations as well as resource
- Skin in the game is important
- Options for providing OSG access

1 Weeks from 2017-03-04 17:53 to 2017-03-06 17:53



1 Weeks from 2018-03-19 07:22 to 2018-03-21 07:22



Maximum: 11,627 , Minimum: 0.00 , Average: 10,776 , Current: 10,962

Eric Sedore, Syracuse

- Associate CIO for Computing Infrastructure
- Ebb and a flow of research work leads to periods of time with idle resources. Also, a good **portion of the resource base we share is scavenged**
- ... utilize available OSG resources for “**bursting**” where the **scale of the job run would take an extended time** on our resources alone
- OSG provides an excellent opportunity for the researchers to **experience the use of large scale computational resources**; there is an experiential/CV benefit



Barr von Oehsen, Rutgers

- Associate Vice President of the Office of Advanced Research Computing (OARC)
- **Levels the playing field** for small to medium sized non-R1 colleges and universities
- **Gives end users options.** Allows spilling out to other sites when their local cluster is busy
 - **Jobs can start sooner**
 - **Higher utilization of clusters**
- **Helps solve contention** between HPC and HTC jobs



Dane Skow, NDSU

- Executive Director for Center for Computationally Assisted Science and Technology
- Part of a Portfolio Management strategy
- “... we are making available NDSU computational resources ... as our **contribution to the national research computing infrastructure.**”
- Our joining with OSG has provided us **operational and technical experience of connecting infrastructures** independent of the contractual business complexities incurred when the exchange of money or services is involved.”



OSG All Hands Meeting, March 21, 2018

Tessa Durham Brooks, Doane

- Associate Professor, Biology, Doane University
- “The primary benefit is in **providing students with experiences that emulate their future** professional environment. We are more concerned that students **understand the types of tools they can use** to engage in these large scale projects... We have been and are continuing to build ways for **students in the natural sciences to experience these types of workflows.**”



Peter Couvares, LIGO

- Senior Research Staff, CalTech
- “OSG has been invaluable to LIGO’s ongoing effort to transition from running almost entirely on collaboration resources, to using shared computing. And I think **OSG’s flexible model and approach — and its people** — have been as critical to its success for LIGO as its technology.”



OSG All Hands Meeting, March 21, 2018



November 10, 2017

NEBRASKA TODAY

Nebraska

Newsroom

Nebraska Today



AGRICULTURE &
ENVIRONMENT

ARTS

BUSINESS & LAW

ON CAMPUS

SCIENCE & TECHNOLOGY

SOCIETY & CULTURE



Holland Computing Center aids gravitational wave discovery

9 hours ago in Science & Technology

READ MORE →



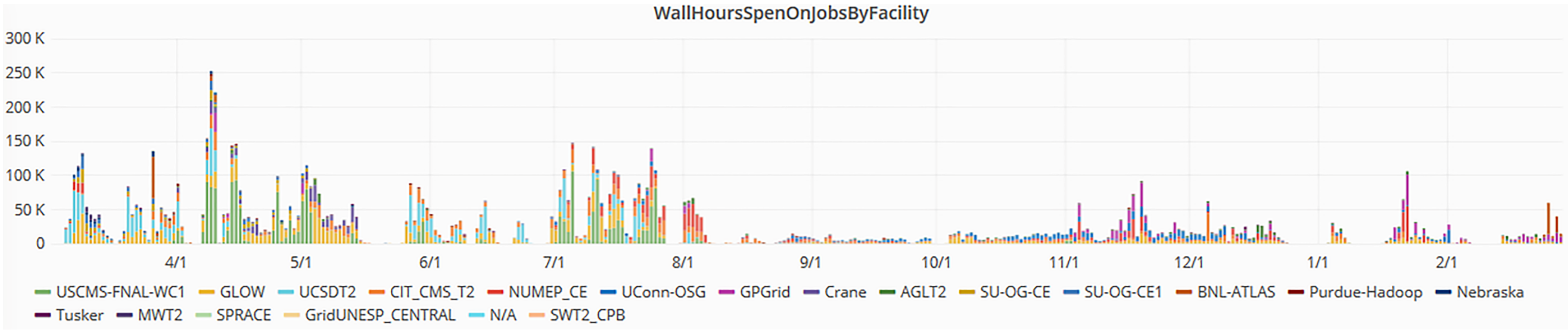
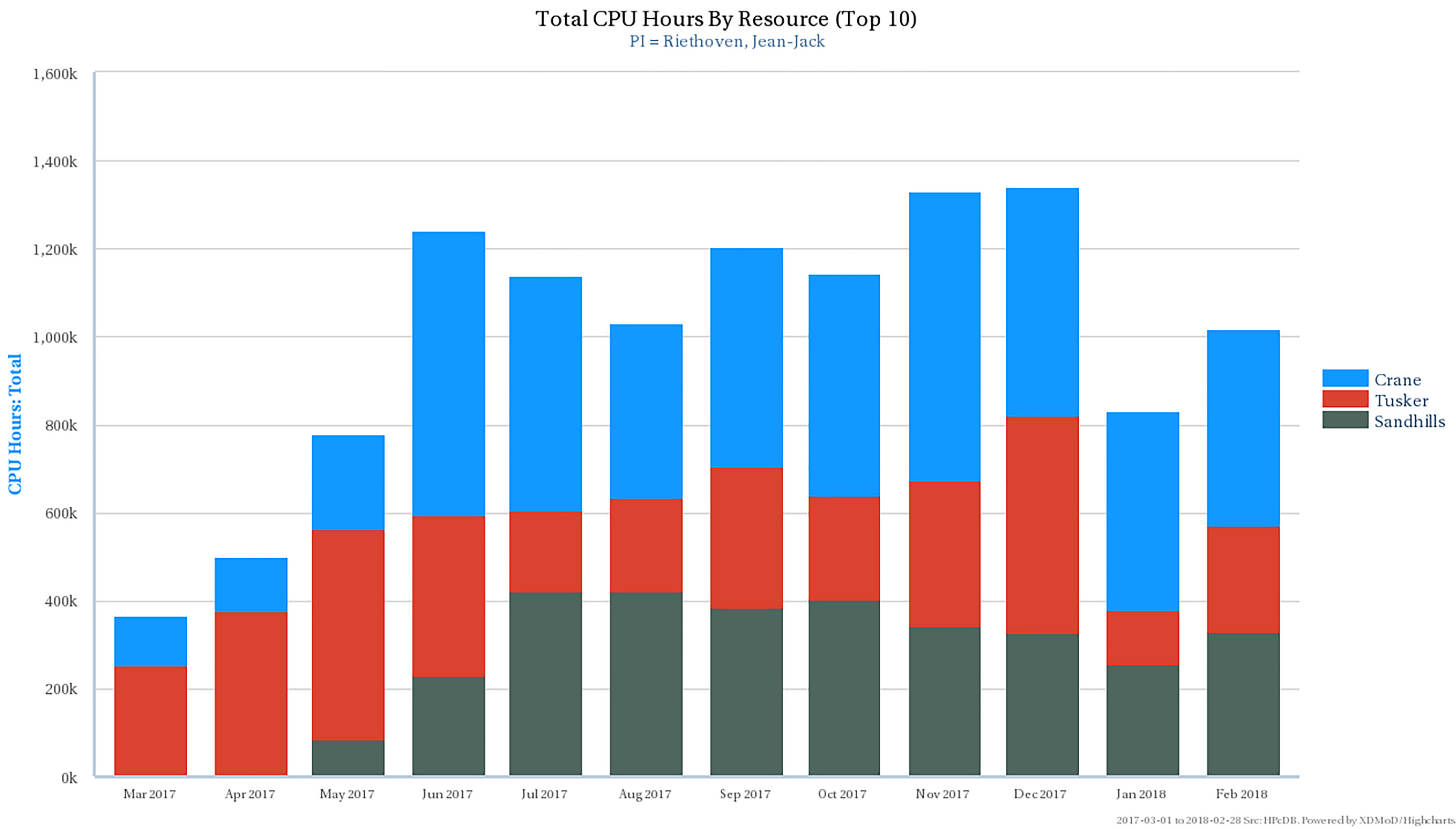
UNL Bioinformatics Core Research Facility

Stats

Stats:

~10 million CPU hours on OSG,
~10 million on HCC.

179 M opportunistic
CPU hours last year



State of OSG Collaboration

- Growing number of participants willing to share resources and contribute to science of all scales
- Science on OSG is a Team Sport
 - OSG enables collaborations of many types and sizes
 - OSG itself is a dedicated collaborative effort
- OSG is impacting a wide variety of researchers and students

Thank you

- NSF
- NRI, UNL
- Utah
- OSG

Broader Impact

- Nebraska Success Stories
 - Derek Weitzel, Derrick Stollée, Jiang Shu
- courses, grid school
- networking for CMS / OSG has benefited University at large
- Regrets from Jean-Jack Riethoven