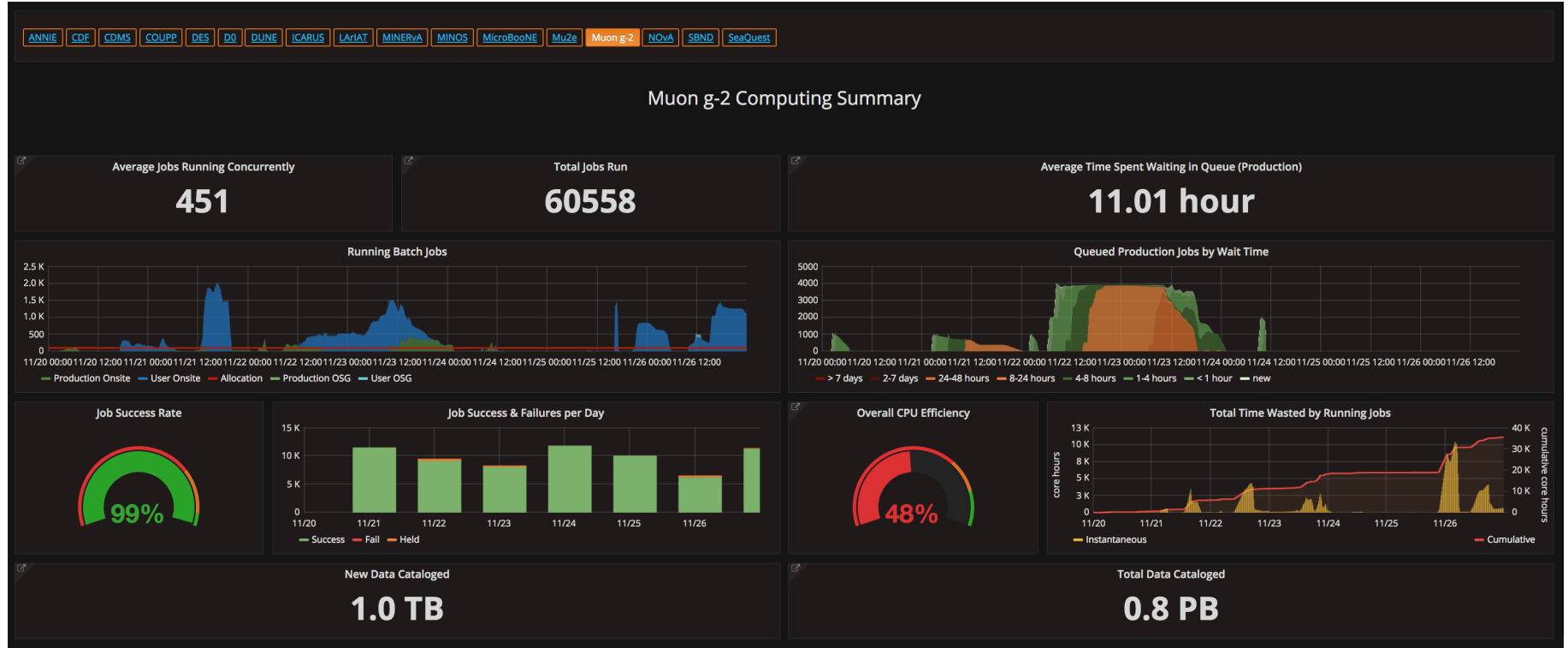


Muon $g-2$ AEM Update

Rebecca Chislett, Brendan Kiburg, Jarek Kaspar

Nov 20th, 2017

Computing Update



Unpacking (only) October Test Data

No simulation → Transitioning to a new release

Data rates normal

This week we start unpacking the new dataset being collected

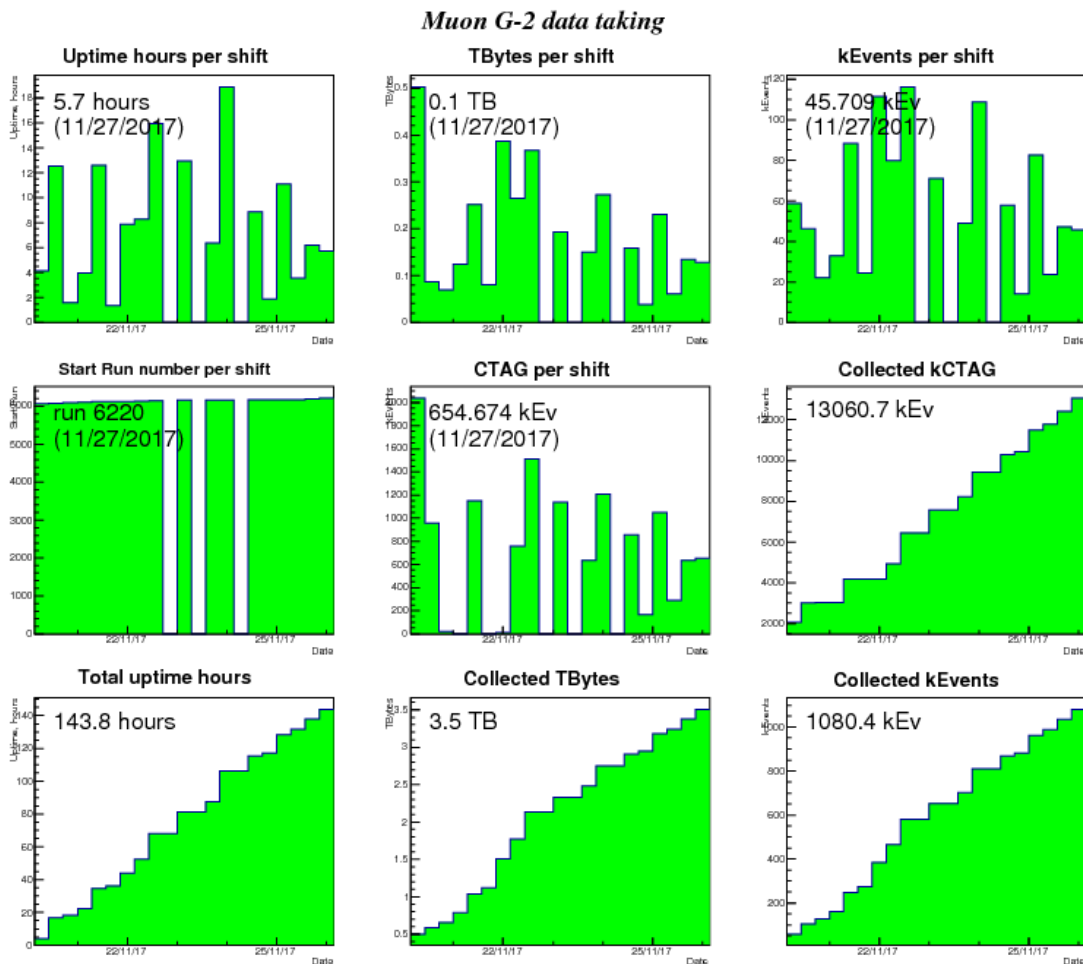
Internal metrics under development

Under development

Uptime

Decay positrons

Data collected



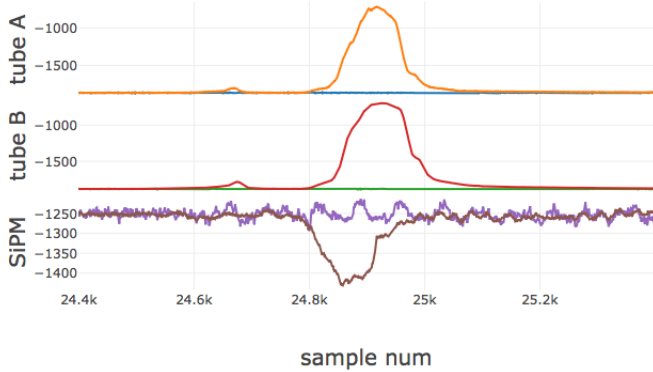
Commissioning update week (11/20—11/26)

- Inflector (magnet to inject beam into ring)
 - Operating Stably
- Kicker and Quads (Injection systems to put/keep muons on proper orbit in ring)
 - Significant work Wed through Sunday
 - Currently running with low beam triggers (1 pulse every 4 to 7 seconds).
- IBMS (Incoming Beam Monitoring System to measure profile of beam at end of beamline)
 - All profiles showing up, will work on alignment this week
- Fiber Harps (in-ring beam profile monitors)
 - Major program over thanksgiving. All channels now working
- Calorimeter (measure decay positrons from muons)
 - 19/24 calorimeters operating
- Tracker (measures spatial profile of decay positrons)
 - 16/16 installed. Some services (gas/air/water) remain
- Field (Maps the magnetic field when the muon beam is off and monitors when ON)
 - No Trolley Runs. Some fixed probe hardware problems.
- Cryopumps (increases pumping speed to storage ring)
 - Continued Infrastructure installation
- Hall
 - Secured all holiday
 - Several controlled access
 - Worked on system stability
- Cyberattack on our gateway machine over the holiday . Incident opened

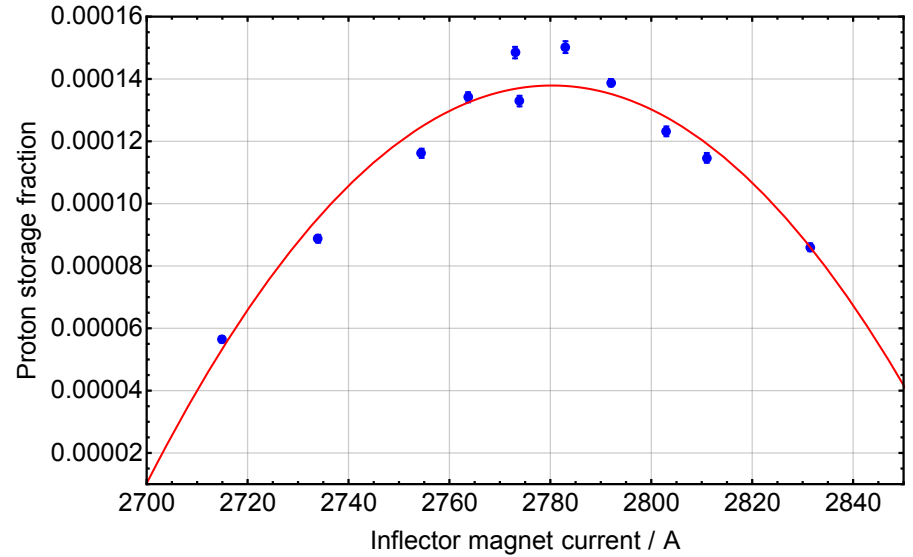
Data...

Entrance counters

run 6184, event 727



Stored Beam vs Inflector Current



Fibers intensity of X-profile Harp at 270 de

