



NOvA Experiment Report

Ashley Back

Iowa State University

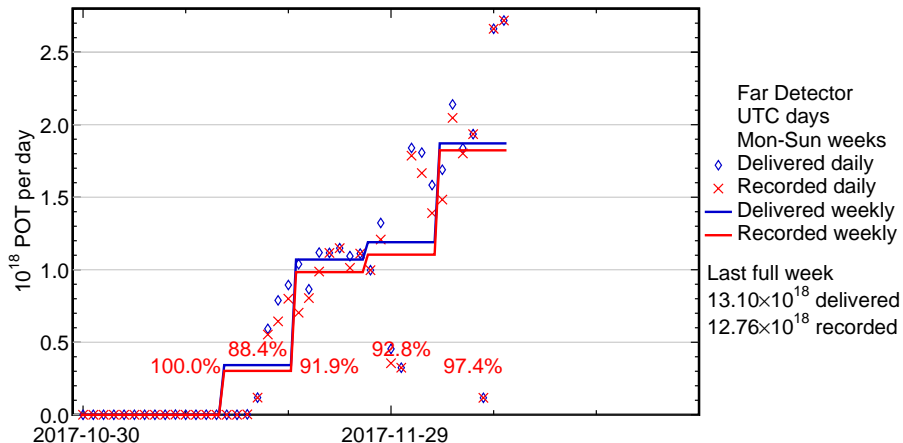
December 11, 2017

used last week's beam downtime to investigate Far Detector DAQ instability due to memory usage issues

- tested dropping cached memory on buffer nodes
 - does not affect run
 - increases headroom on CPU usage
 - will do automatically once a week until we can pin down why this memory usage creeps up
 - all indications suggest that the implemented fixes will enable us to run steadily while our investigations continue into the causes
- small tweaks to error handling in DAQ software led to much greater stability for the last several days

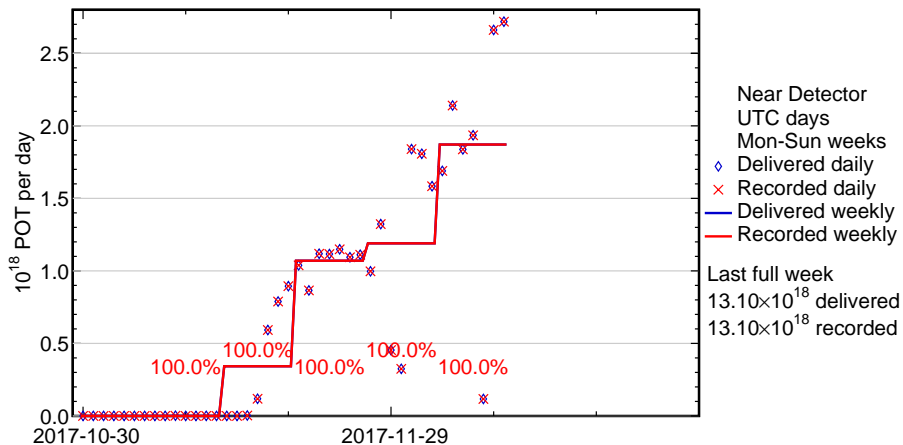
DAQ Status and Uptime: FarDet

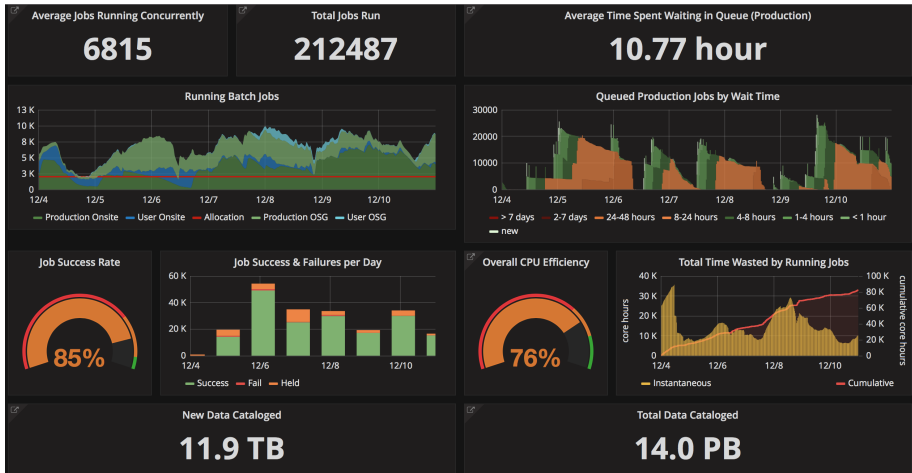
Four Week Average: 92.625%



DAQ Status and Uptime: NearDet

Four Week Average: 100.0%





- winter production campaign progressing: processed $\sim 50\%$ of cosmic files, will process a small selection of RHC files from 2016 this week
- some recent jobs written to bad tapes; computing division fixing this
 - no raw data files lost, tapes are being sent to Oracle to be copied to new tapes and returned
 - the effect should be transparent to users