

## ARMENIAN GROUP PROPOSAL FOR LEM

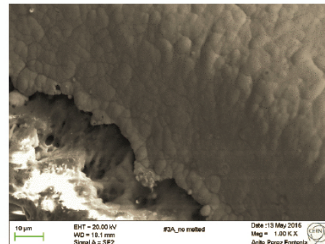
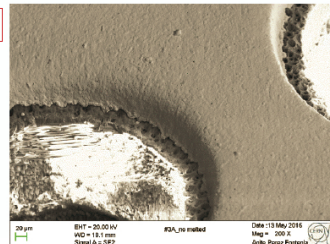
Ara Ioannisian (contact person, ara@cern.ch), Narine Kazarian(narinkaz@gmail.com),  
Vahram Mekhitarian (vahram.mekhitarian@gmail.com)

After chemical bath lower part of the wall of cooper have rough edge.  
Microscopic ledges of the cooper are the source of discharges at high voltages.

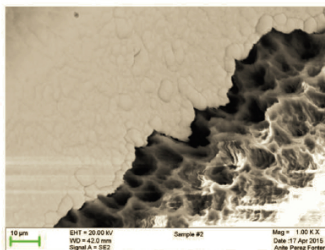
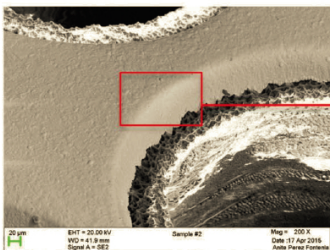
### **ETH** Comparison 10x10 50x50 - microscopique **WA105**

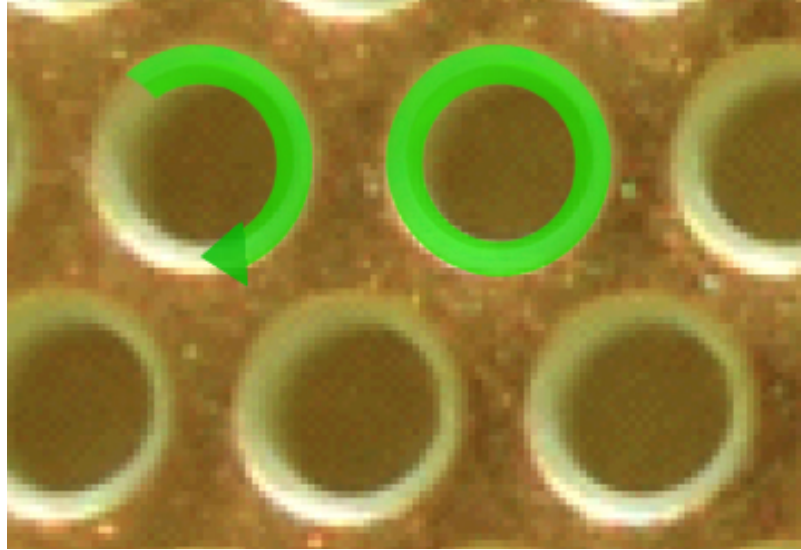
no systematic check but. Observation of a few holes suggest they are identical.

**50x50**



**10x10**





Based on our previous experience (NK and VM) we propose to cover inner walls of copper holes by some dielectric, i.e. epoxide (green ring on the figure)

