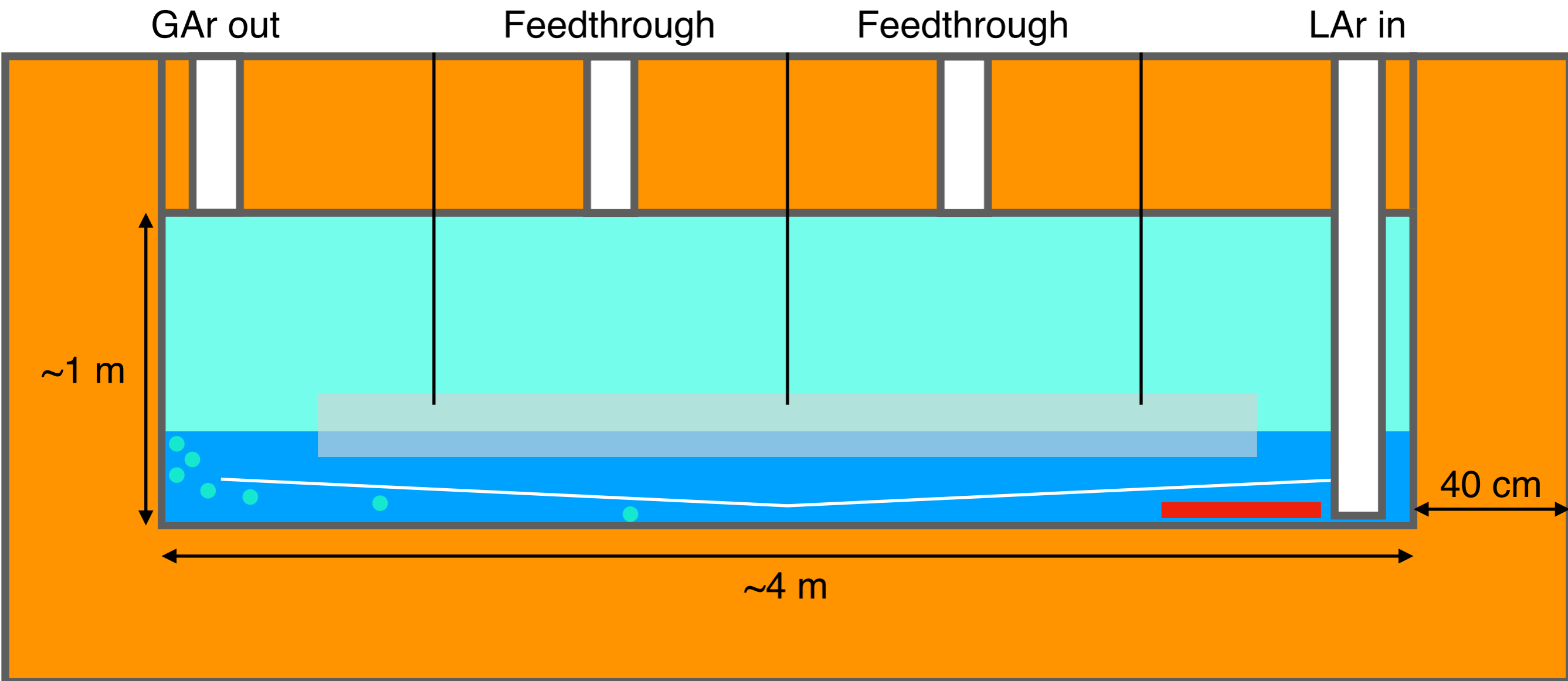
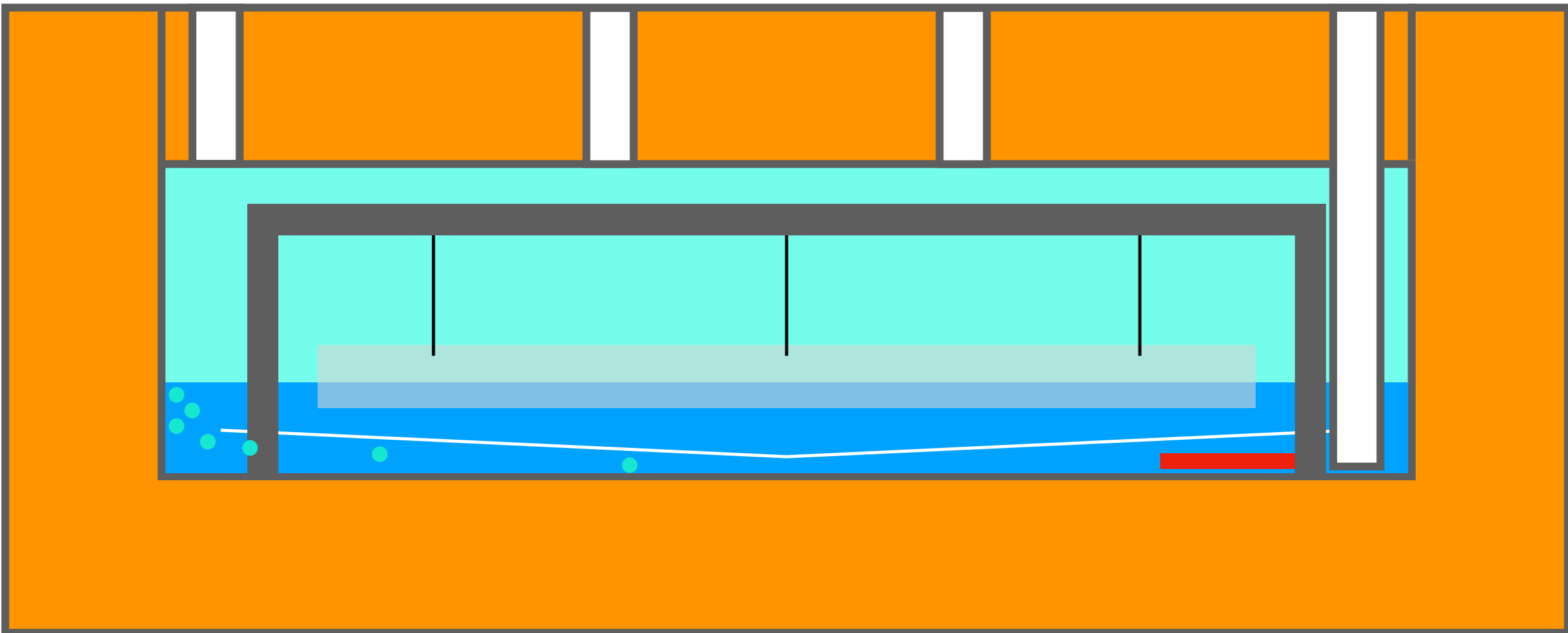
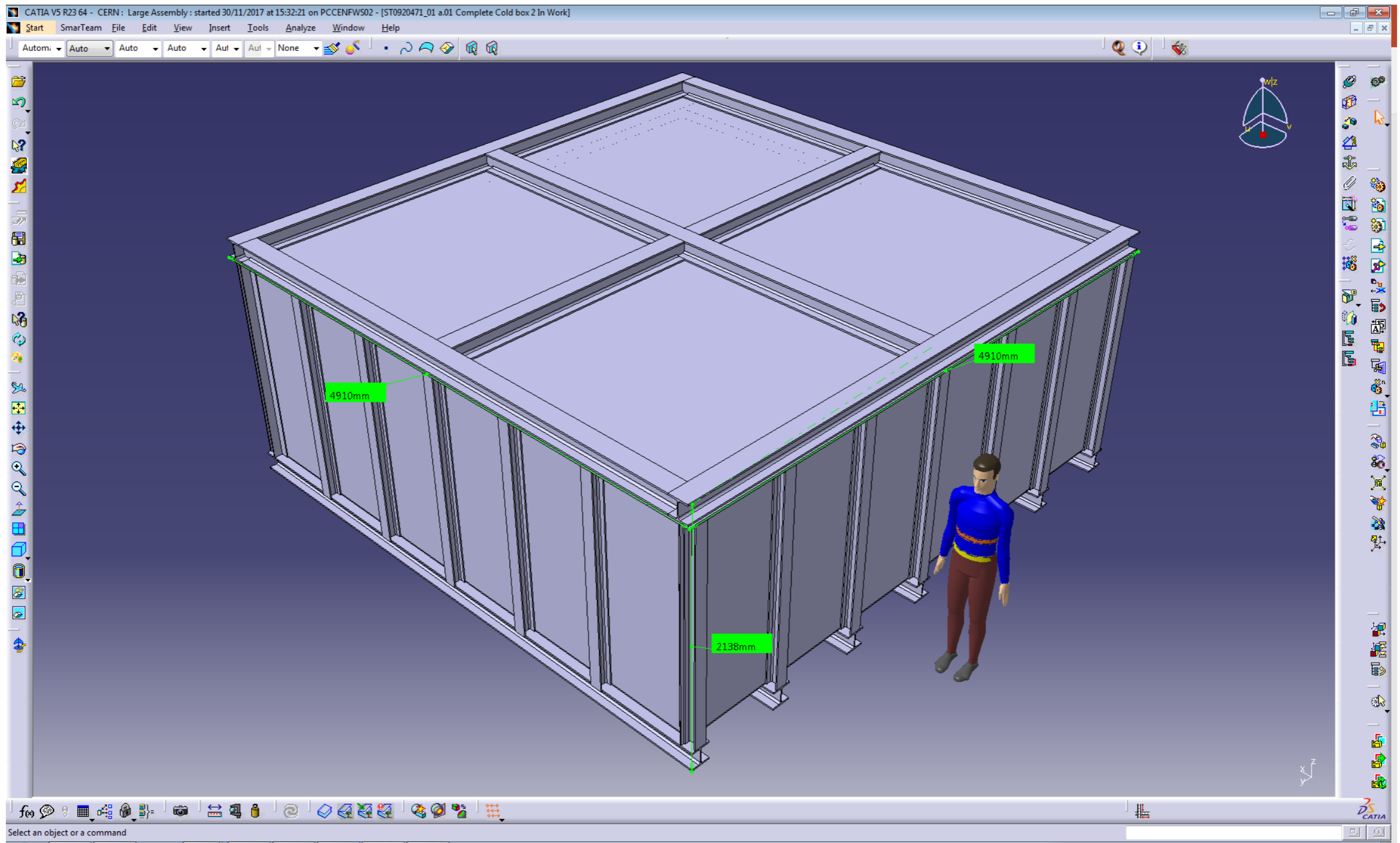


Baseline (1)



Baseline (2)





No convection included

87 K on all the inner surfaces (not realistic)

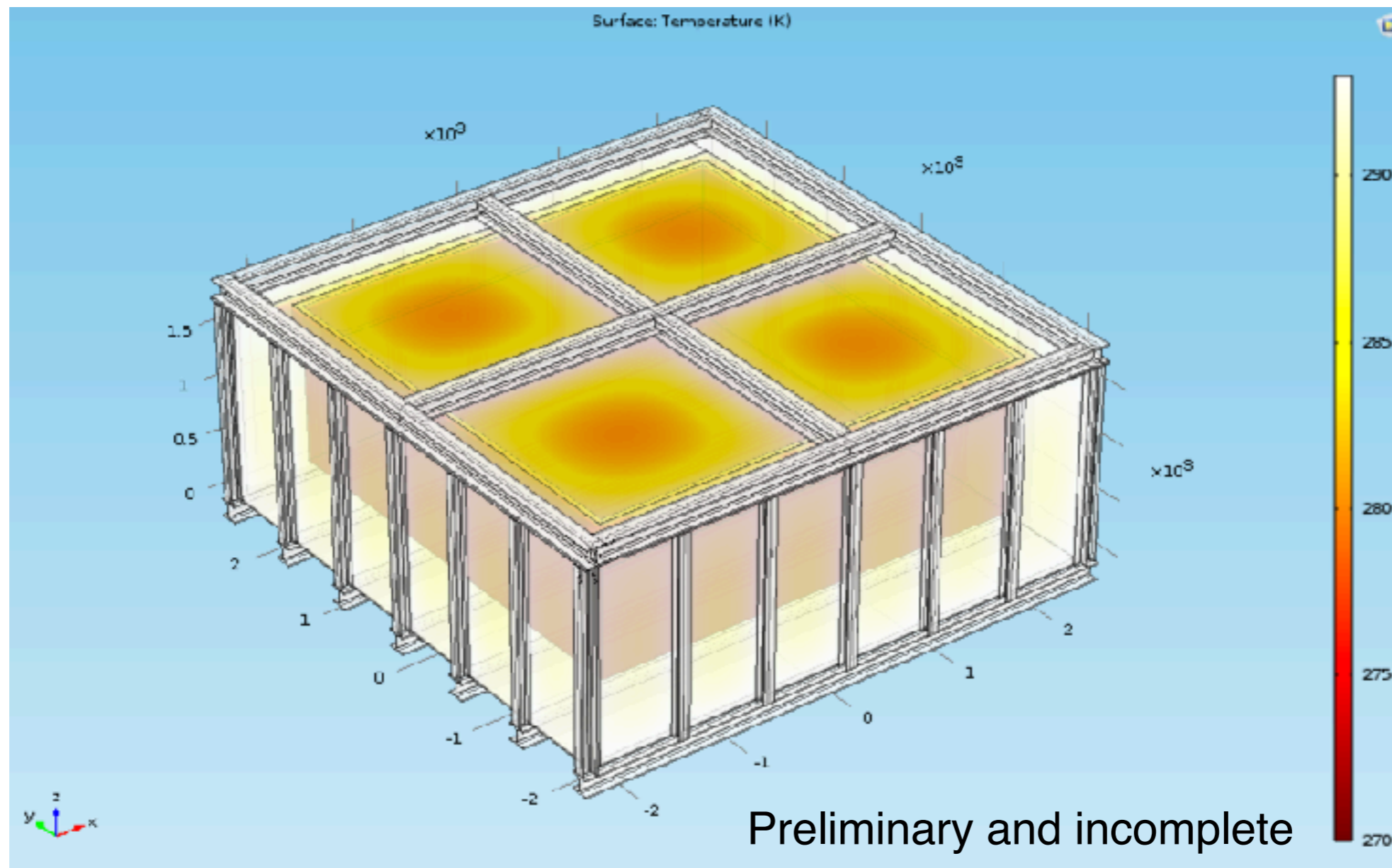
40 cm of insulation 0.05 W/(K m)

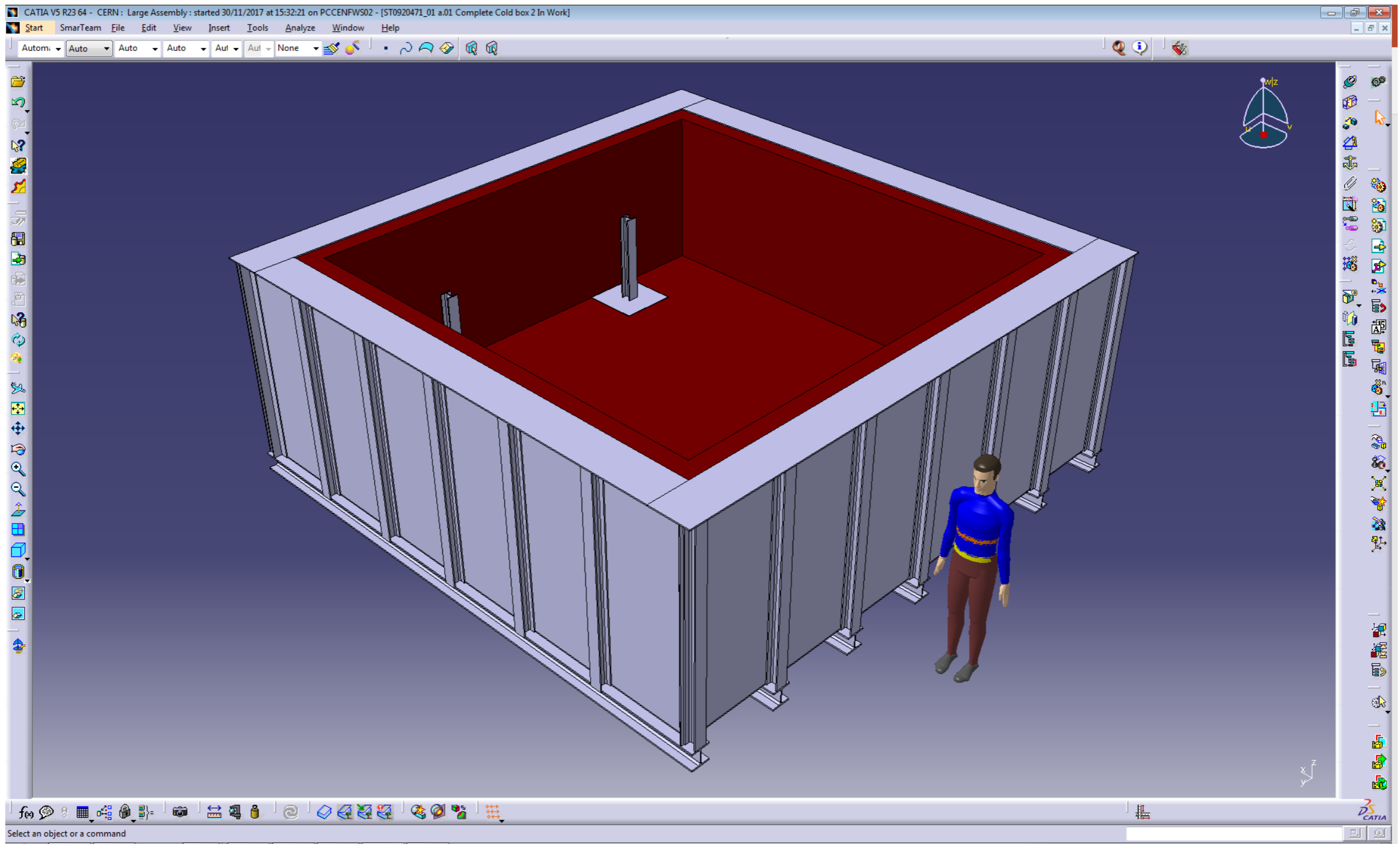
Modest temperature decrease on the wall

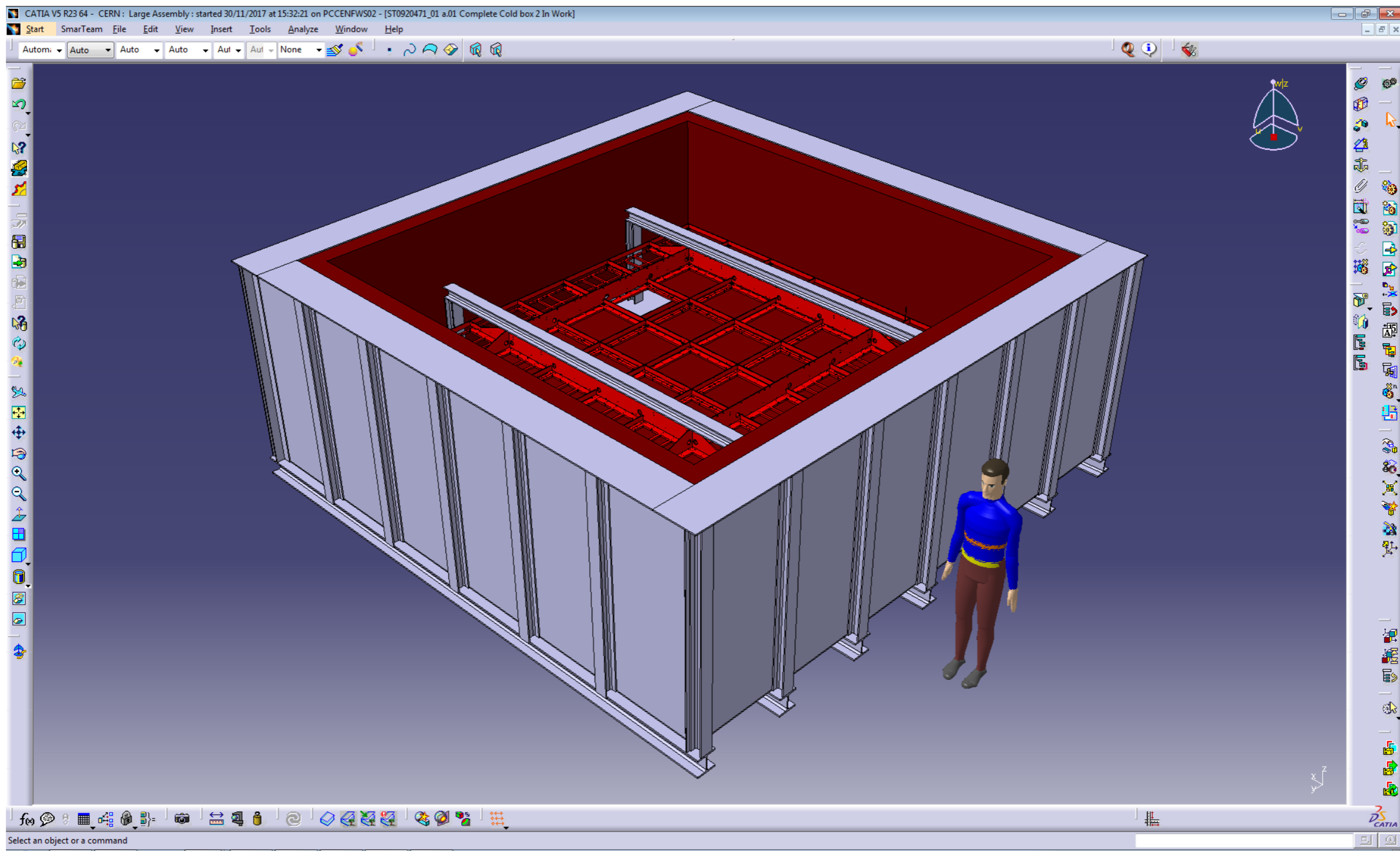
Total heat input: 1.3 kW (evaporation ~ 8 g/s) \rightarrow ~ 1.3 mm/h of evaporation

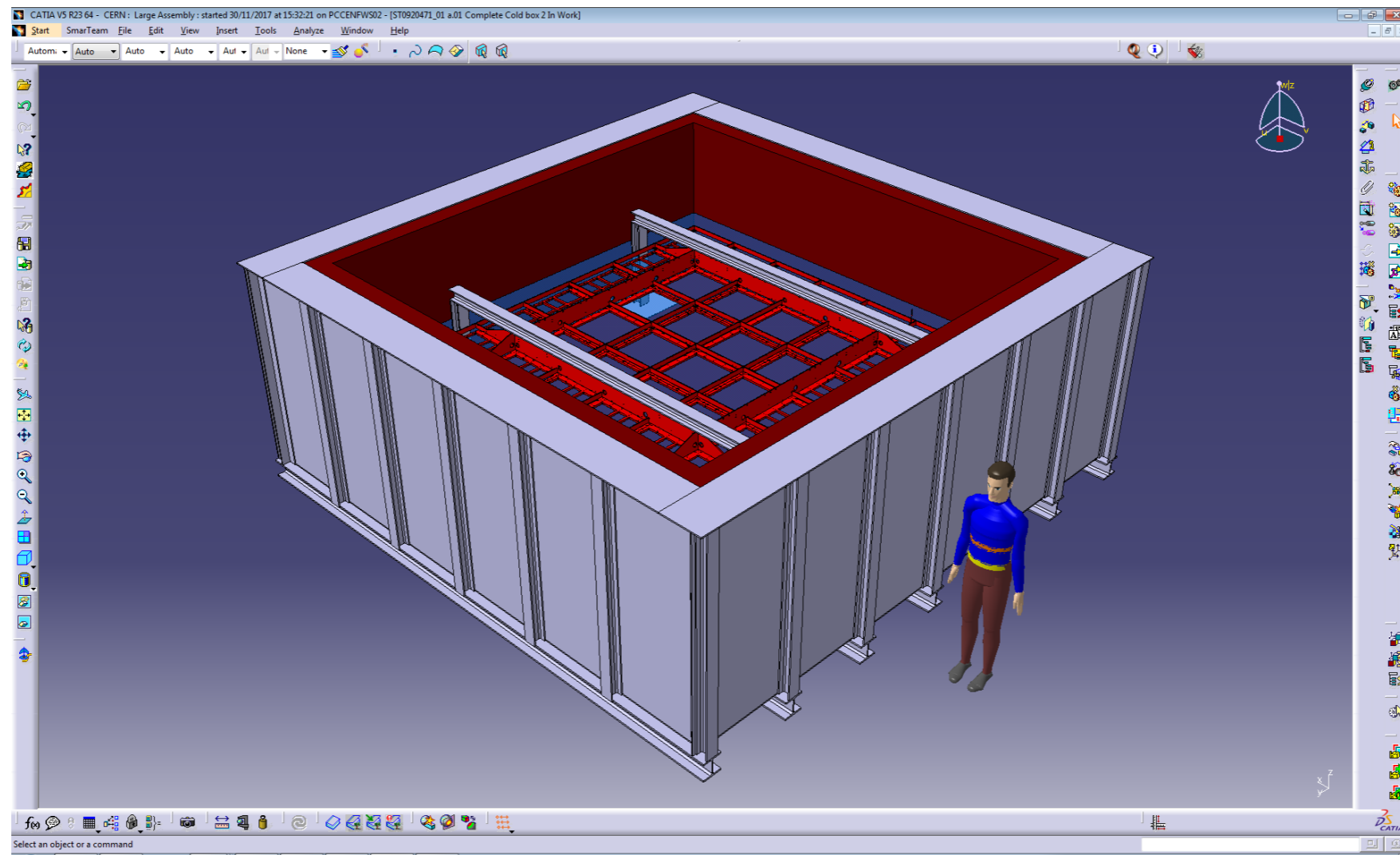
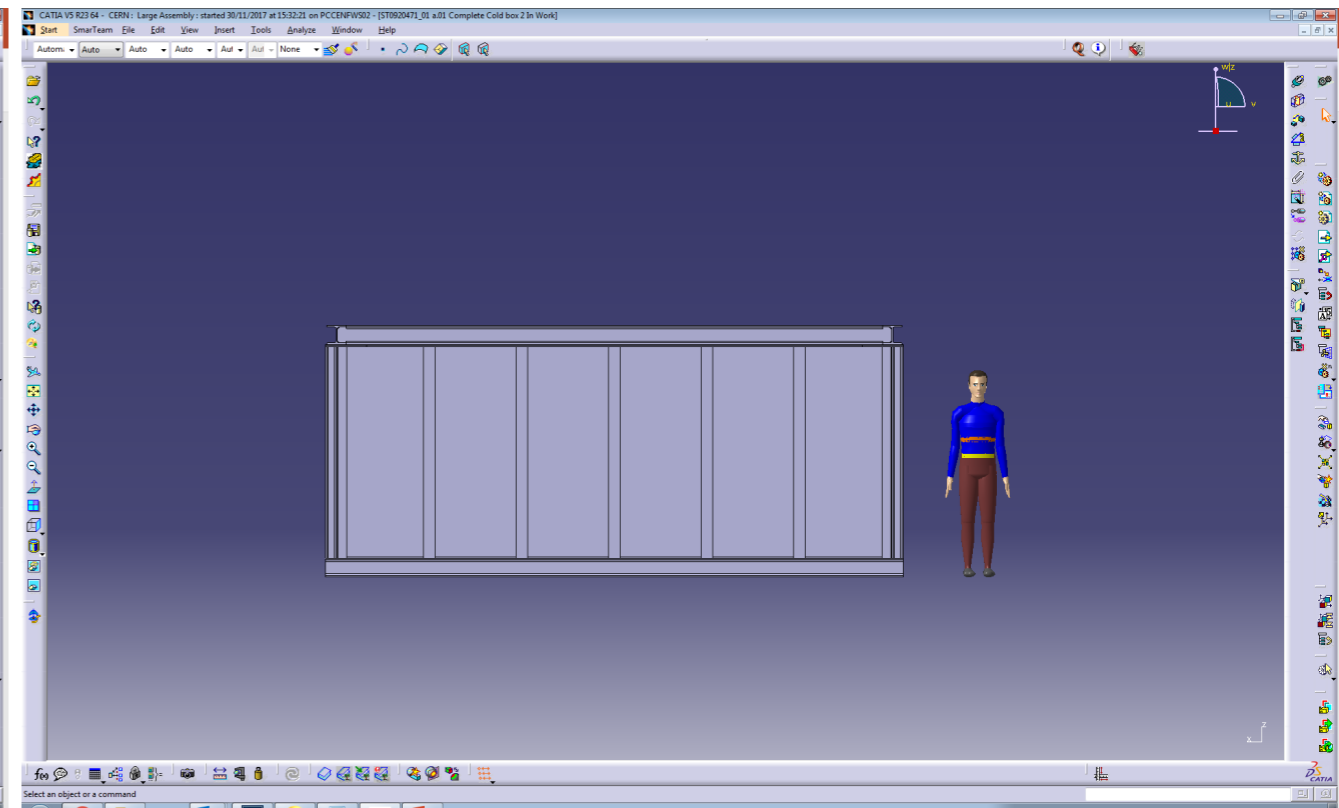
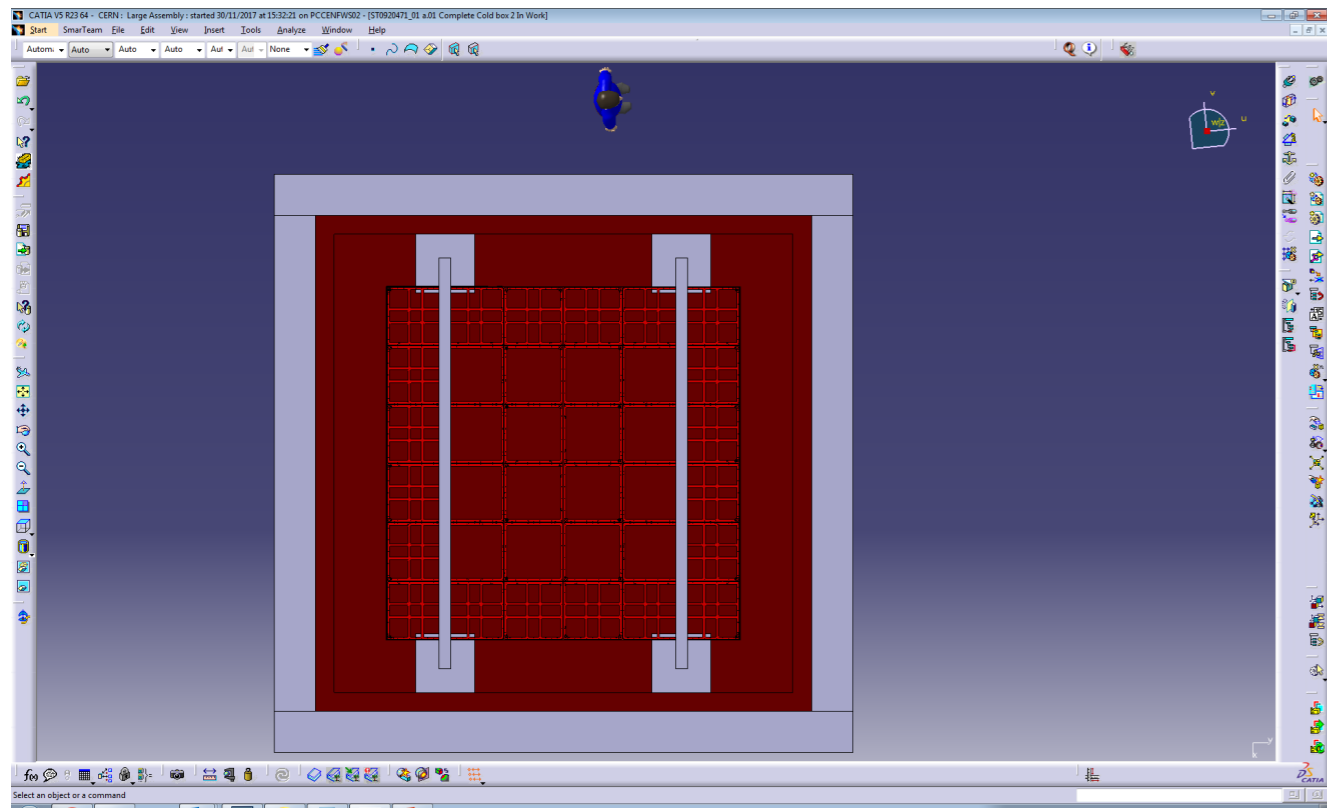
LAr level: 50 cm \rightarrow 10.6 ton

LAr level: 30 cm \rightarrow 6.4 ton



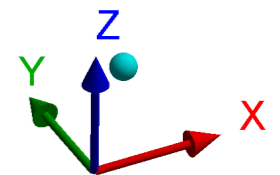
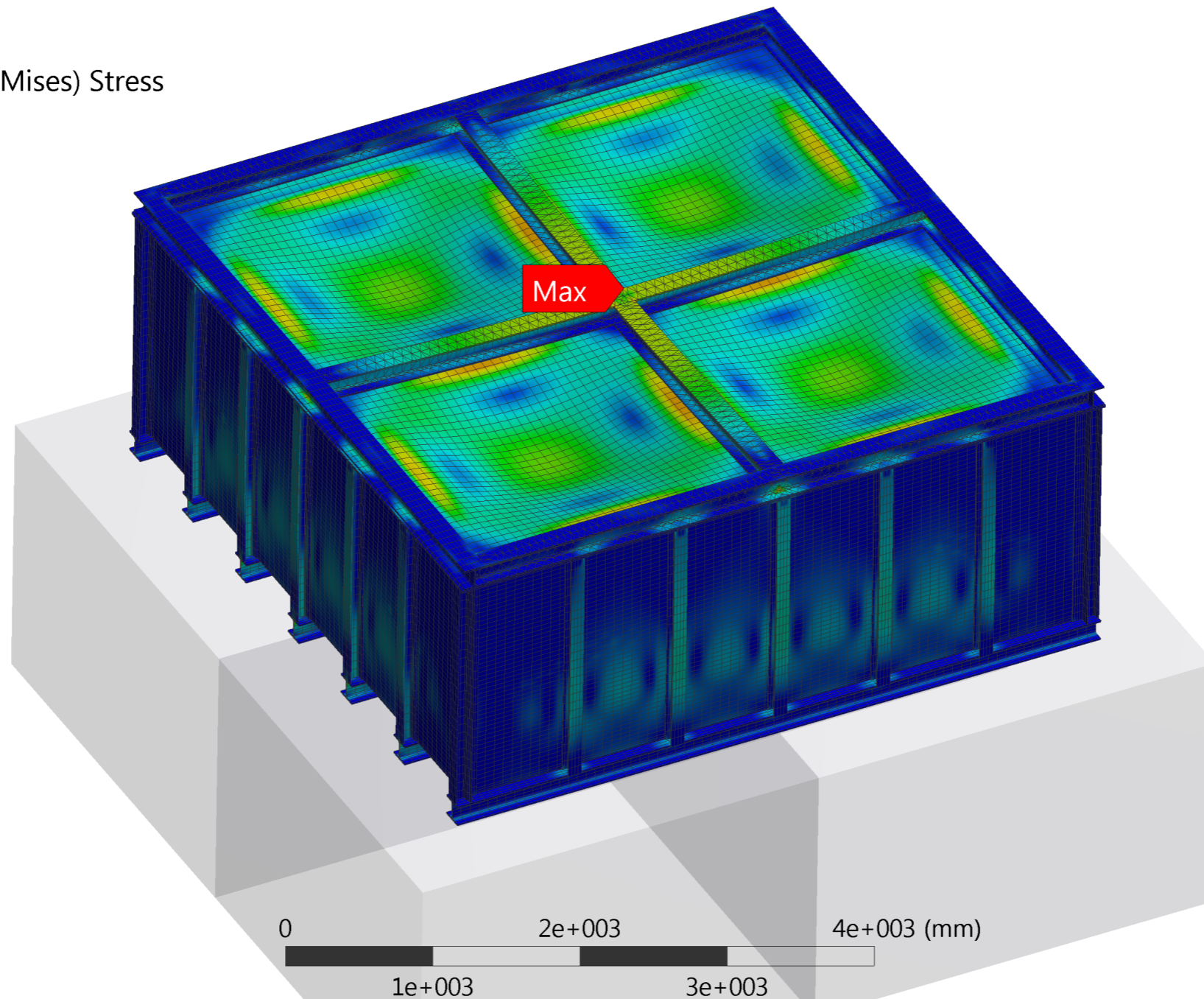
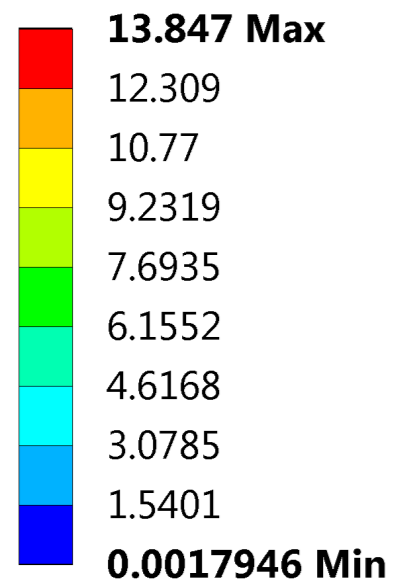






Stress

B: Static Structural
Equivalent Stress
Type: Equivalent (von-Mises) Stress
Unit: MPa
Time: 1
12/13/2017 11:12 AM



Deformation X

B: Static Structural

Directional Deformation

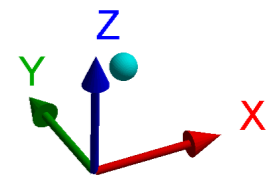
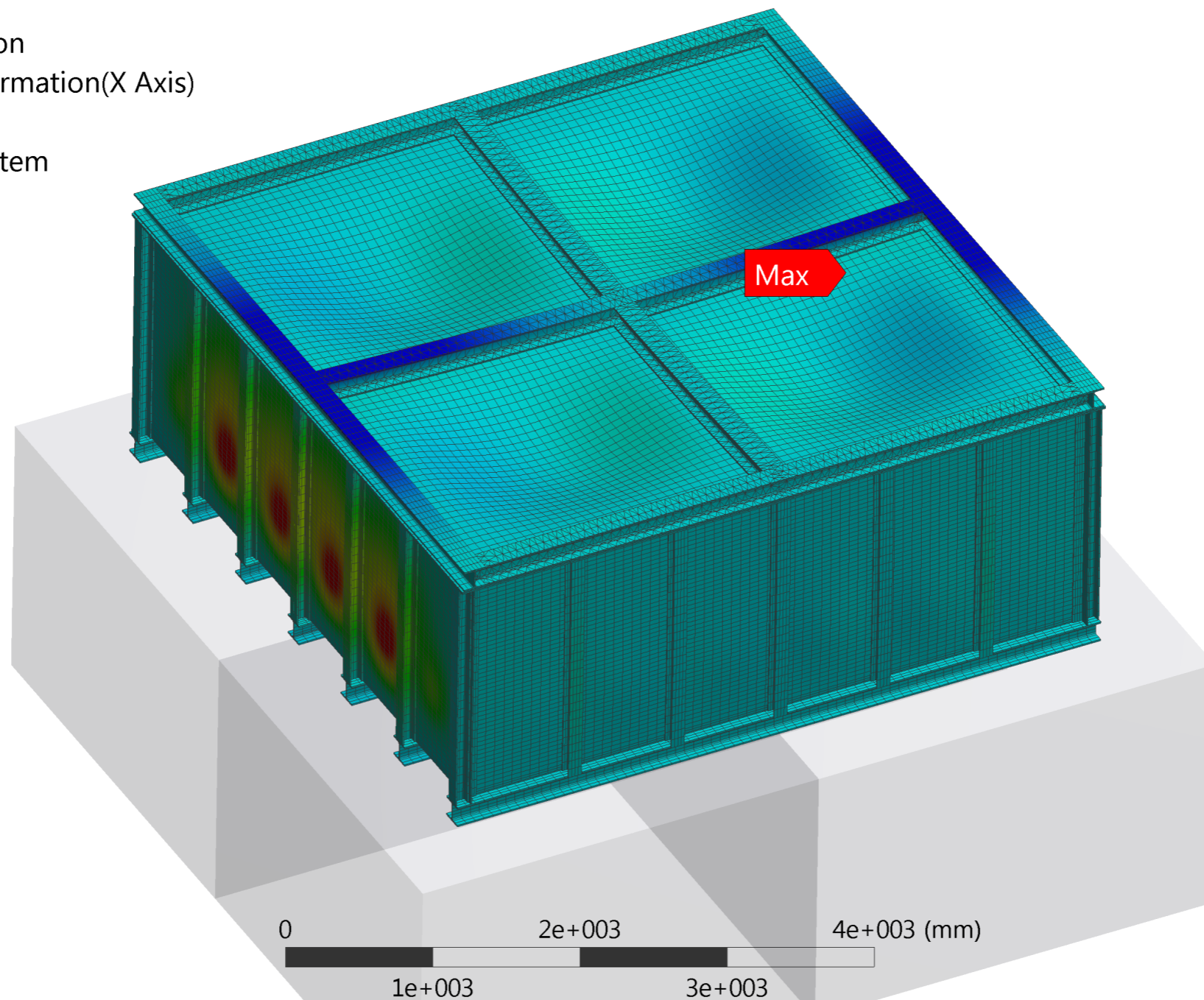
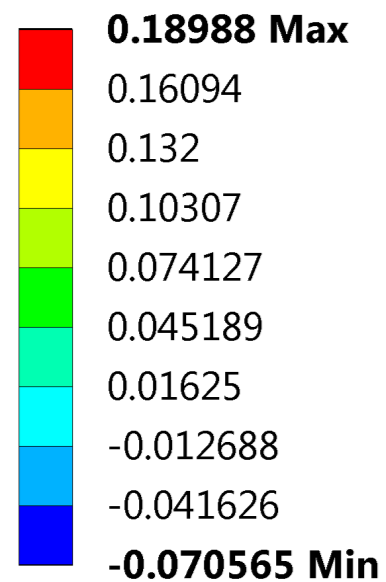
Type: Directional Deformation(X Axis)

Unit: mm

Global Coordinate System

Time: 1

12/13/2017 11:12 AM



Deformation Y

B: Static Structural

Directional Deformation 2

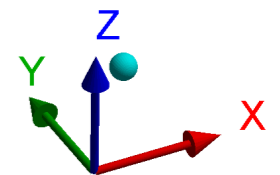
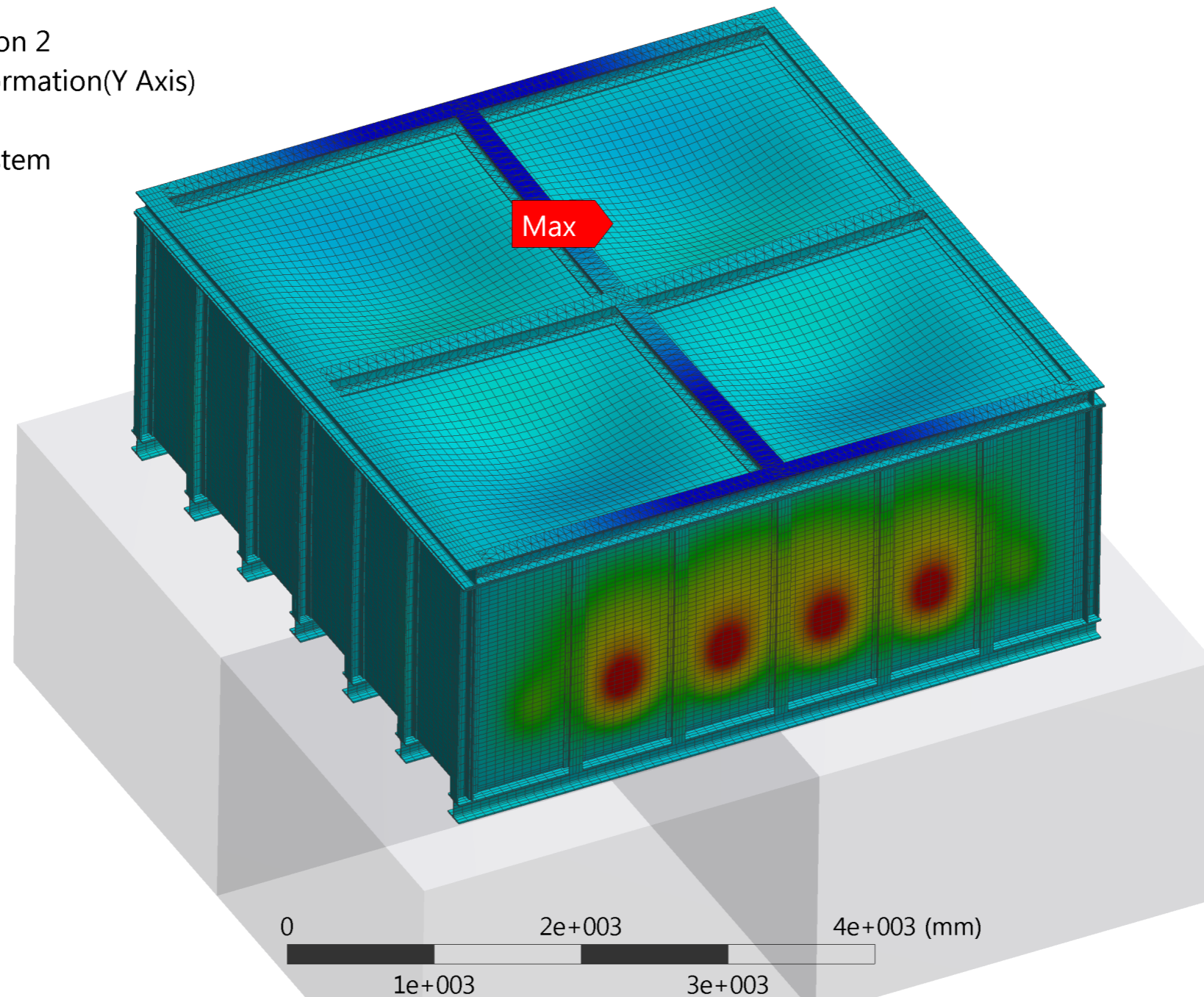
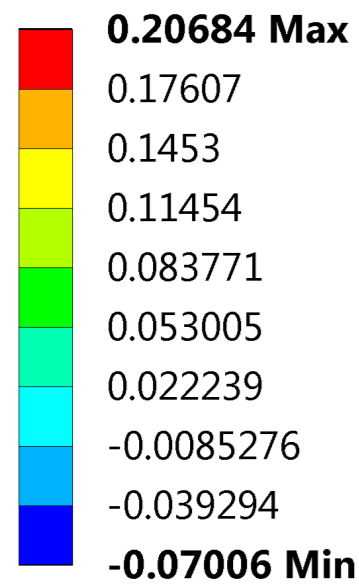
Type: Directional Deformation(Y Axis)

Unit: mm

Global Coordinate System

Time: 1

12/13/2017 11:13 AM



Deformation Z

B: Static Structural

Directional Deformation 3

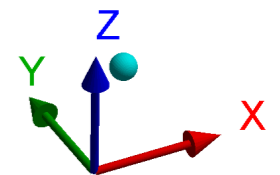
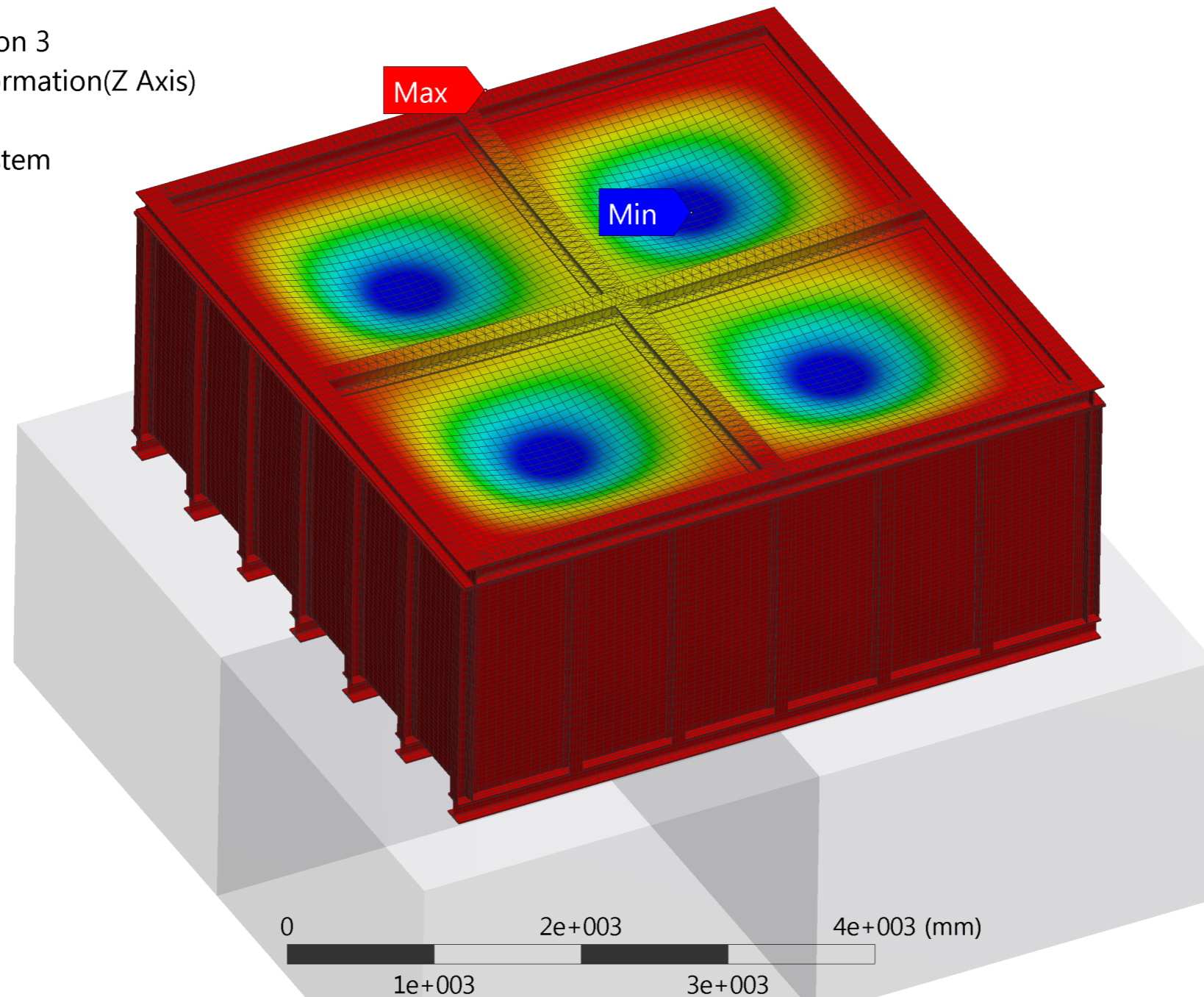
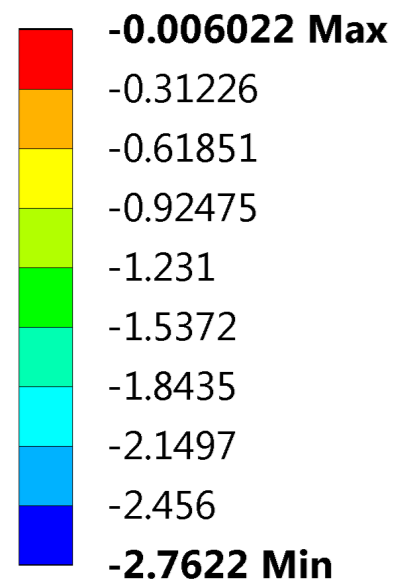
Type: Directional Deformation(Z Axis)

Unit: mm

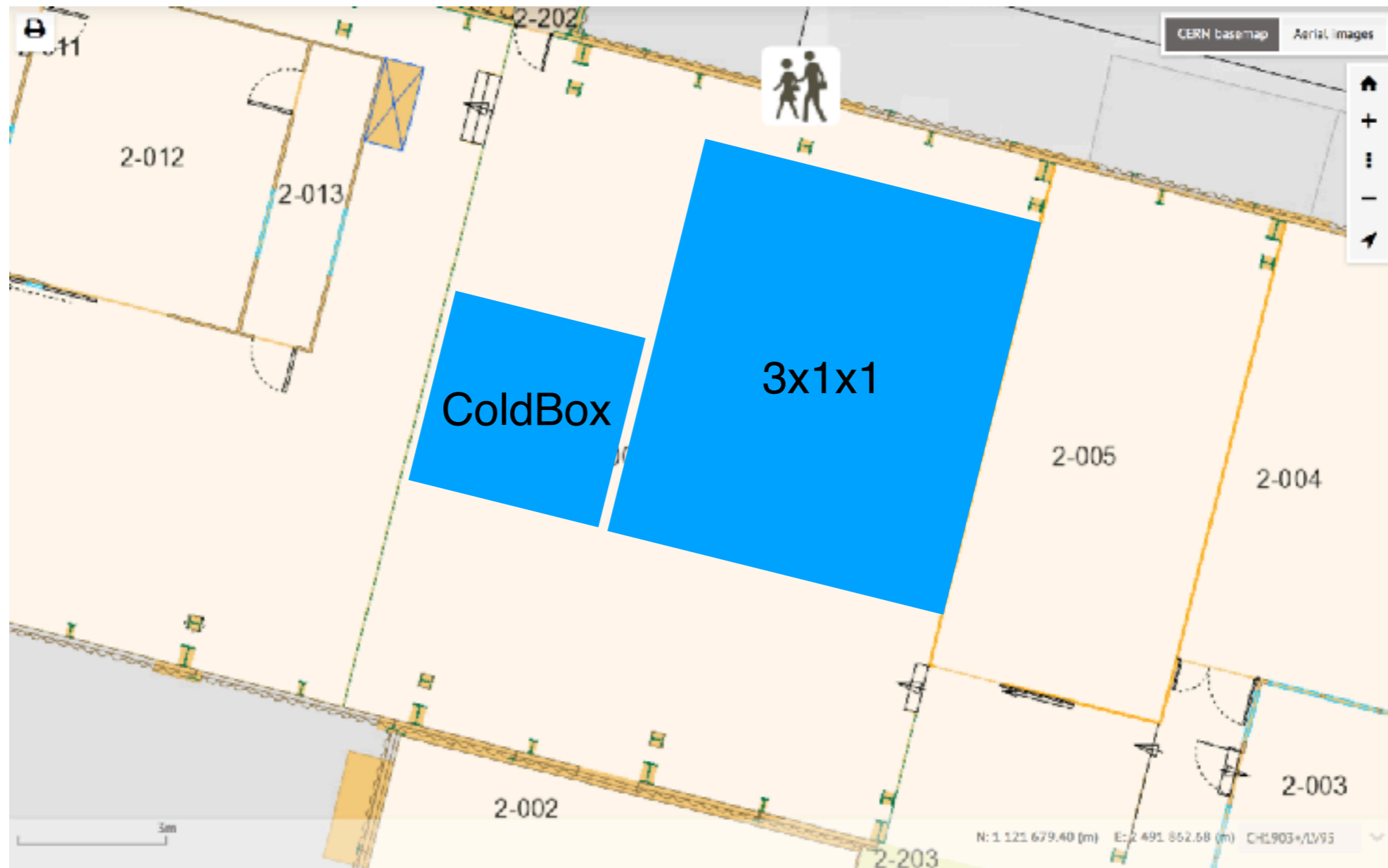
Global Coordinate System

Time: 1

12/13/2017 11:13 AM



182/R-002



More calculation to be done

To be defined

- cryogenics needed
- foam installation
- internal membrane
- roof penetrations