

ProtoDUNE-SP APA's

Gina Rameika
LBNC Meeting
February 19, 2018

Attending to the winder



Moving on and off the winder to the process cart



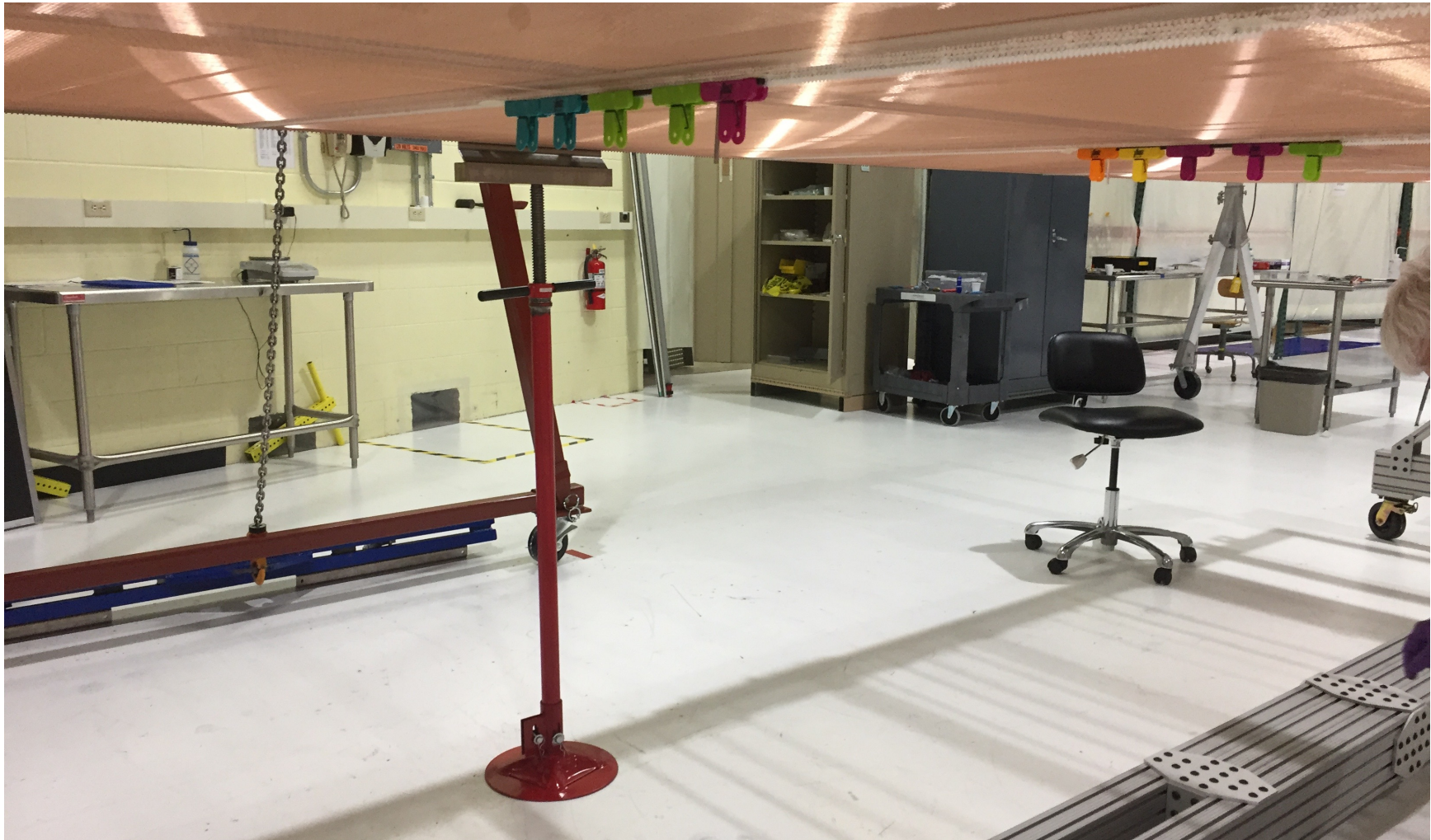


Prepping : gluing boards and combs on the process cart





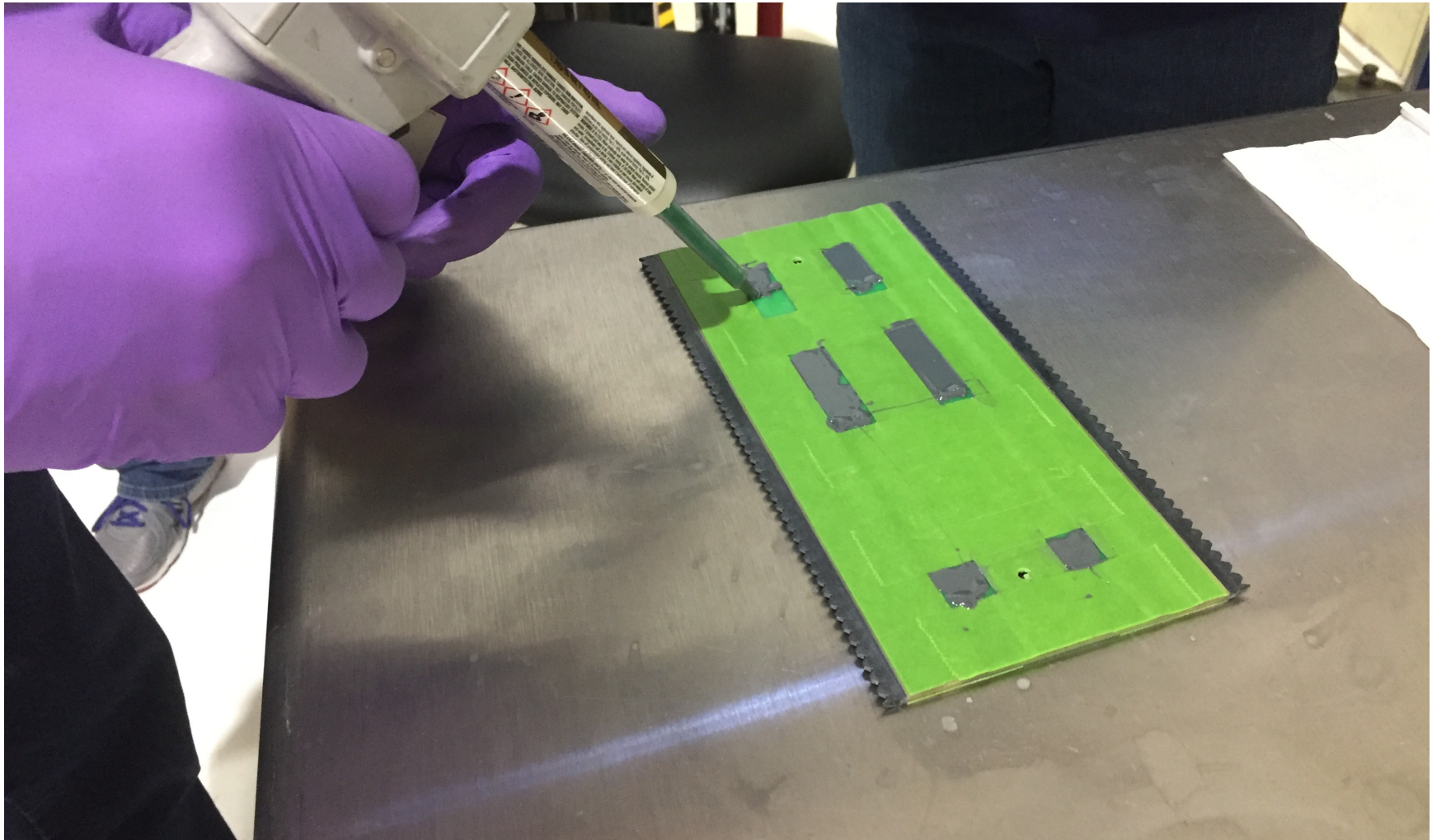
Waiting for glue to dry



Measuring tensions

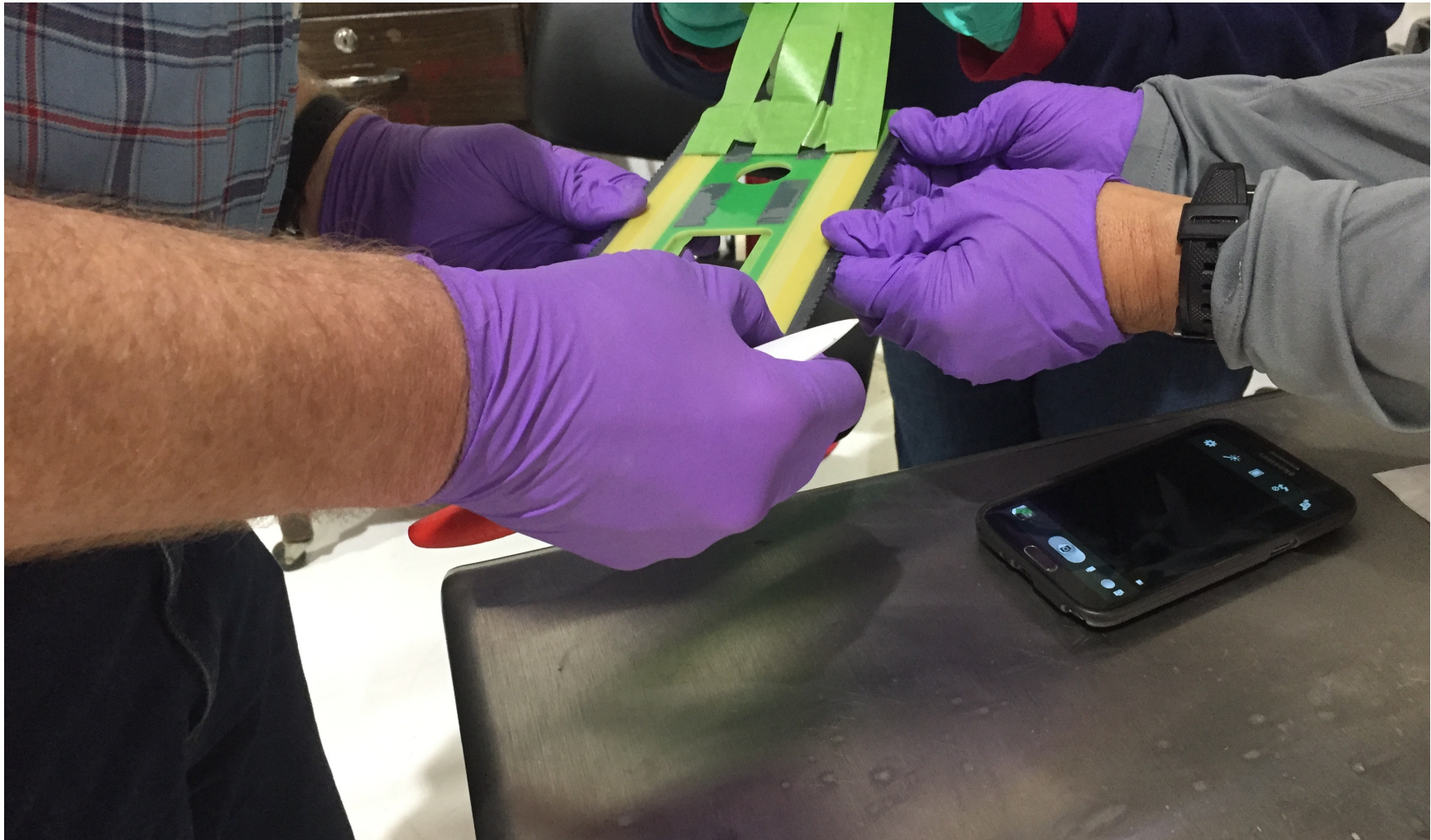


Applying epoxy to boards

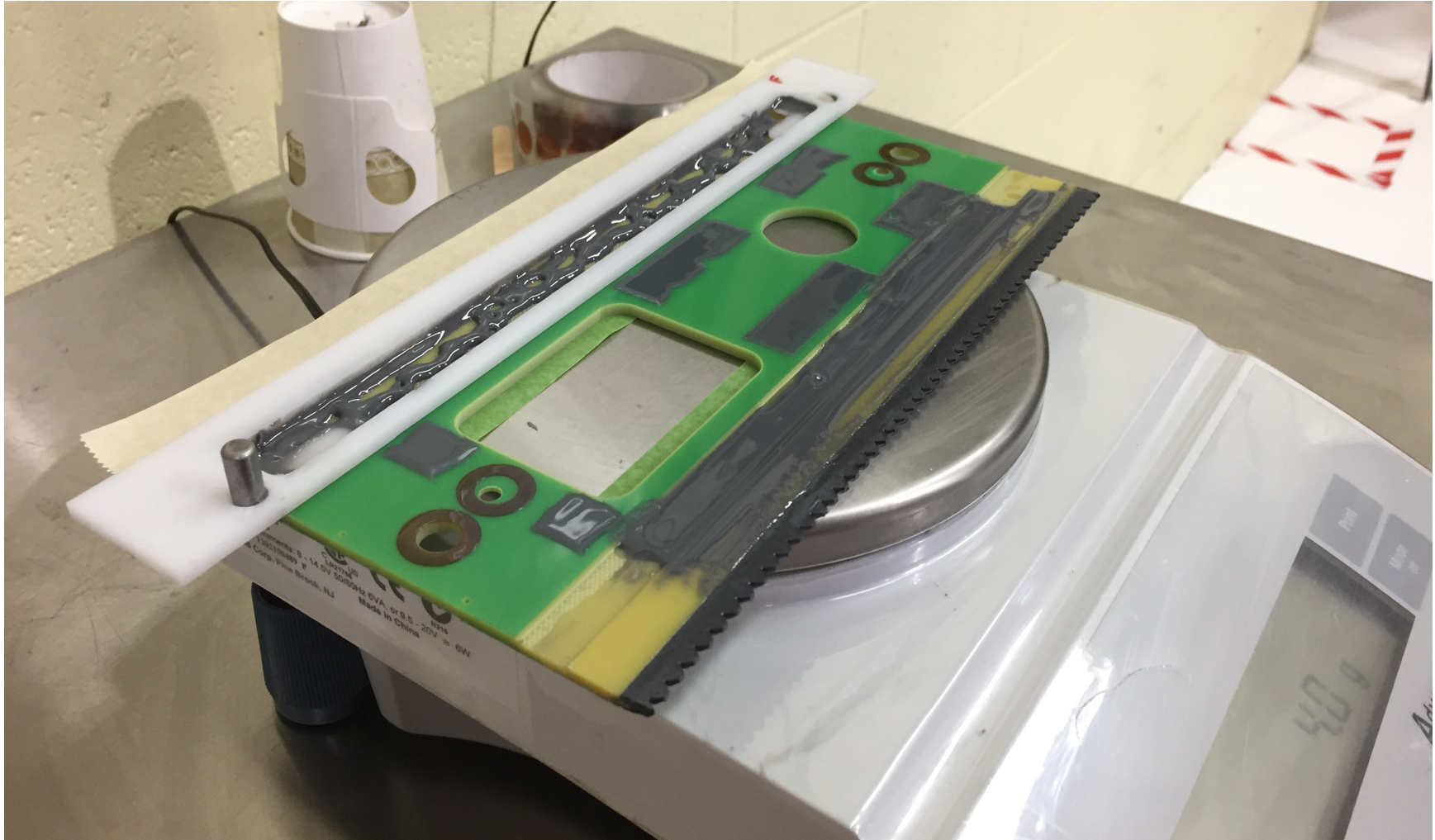




Preparing boards



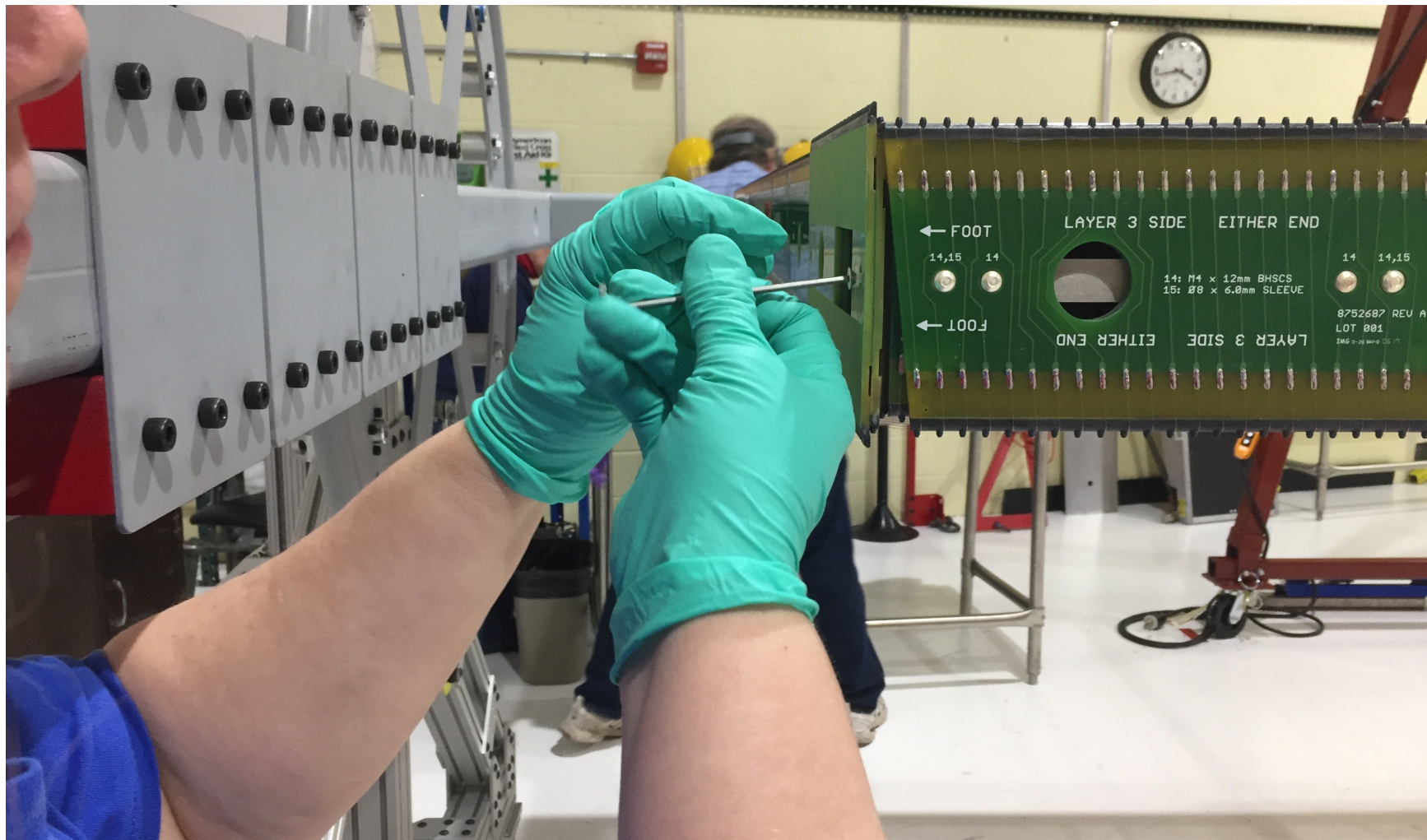
Weighing epoxy



Recording weights

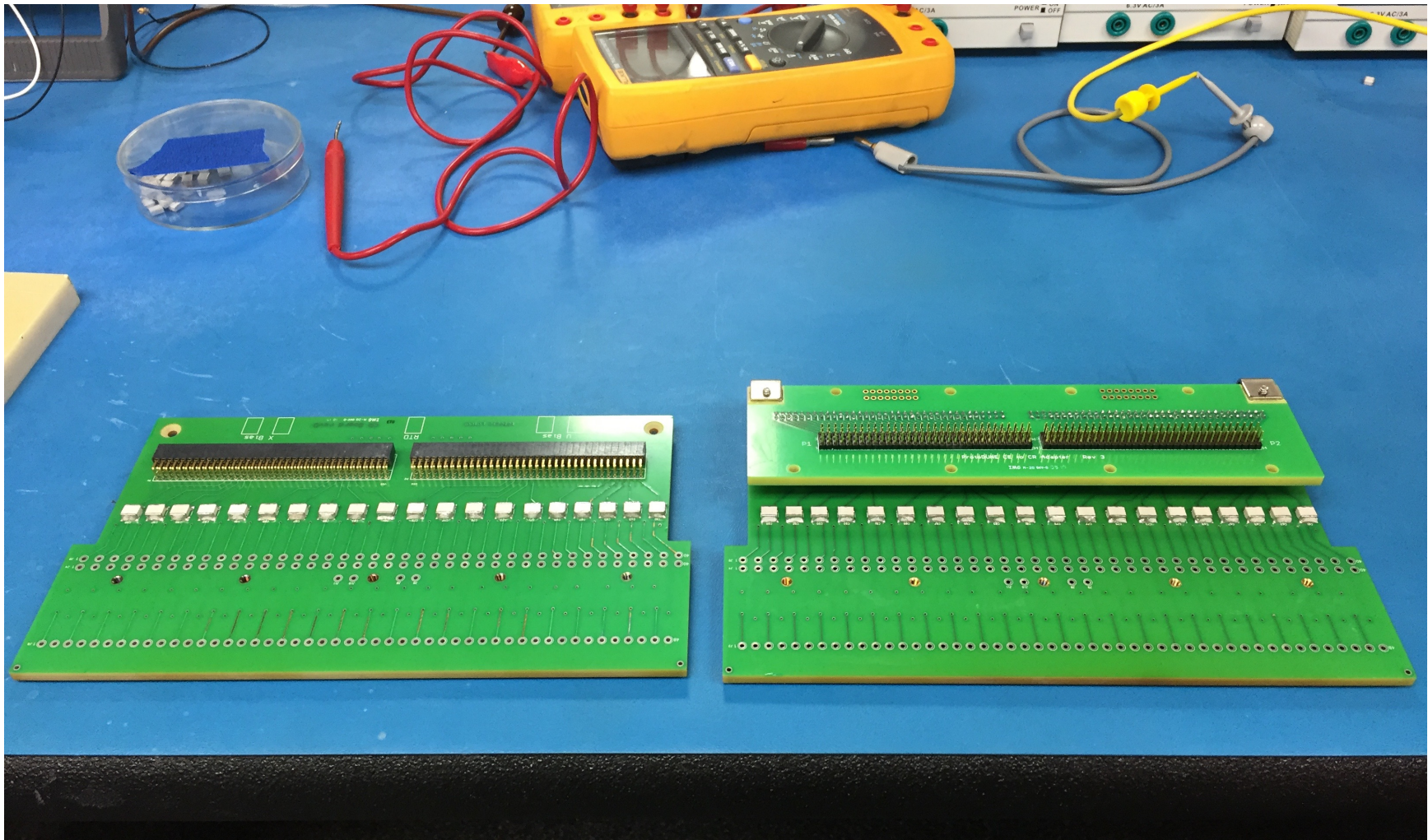
Date	Start Time	Board Type	APA position	Board Pos#	Board tare wt	Board wt w/ hold-down epoxy (before tape strip)	2nd tare (post tape strip)	weight w/ edge epoxy strip 1	Strip 1
24 APR '17	10:35	G HD - LCR END	B hd left	B #1	346.6	348.2	345.9	350.0	4.1
	10:51	"	B front mid	2	339.6	340.6	338.3	342.6	4.3
	11:07	"	"	3	339.4	340.9	338.5	342.8	4.3
			"	4	339.4	336.8	336.8	341.1	4.3
			"	5	339.4	339.9	337.6	342.3	4.3
	11:55	GHD RT	A hd right	A1	338.2 ✓	339.1	337.3	341.6	4.3
	1156			A2	339.8	341.0	338.6	343.3	4.3
	1230			A3	—	—	337.5	341.9	4.3
	1241			A4	337.3	338.4	336.1	341.1	4.3
	1252			A5	338.9	339.9	339.9	344.1	4.3

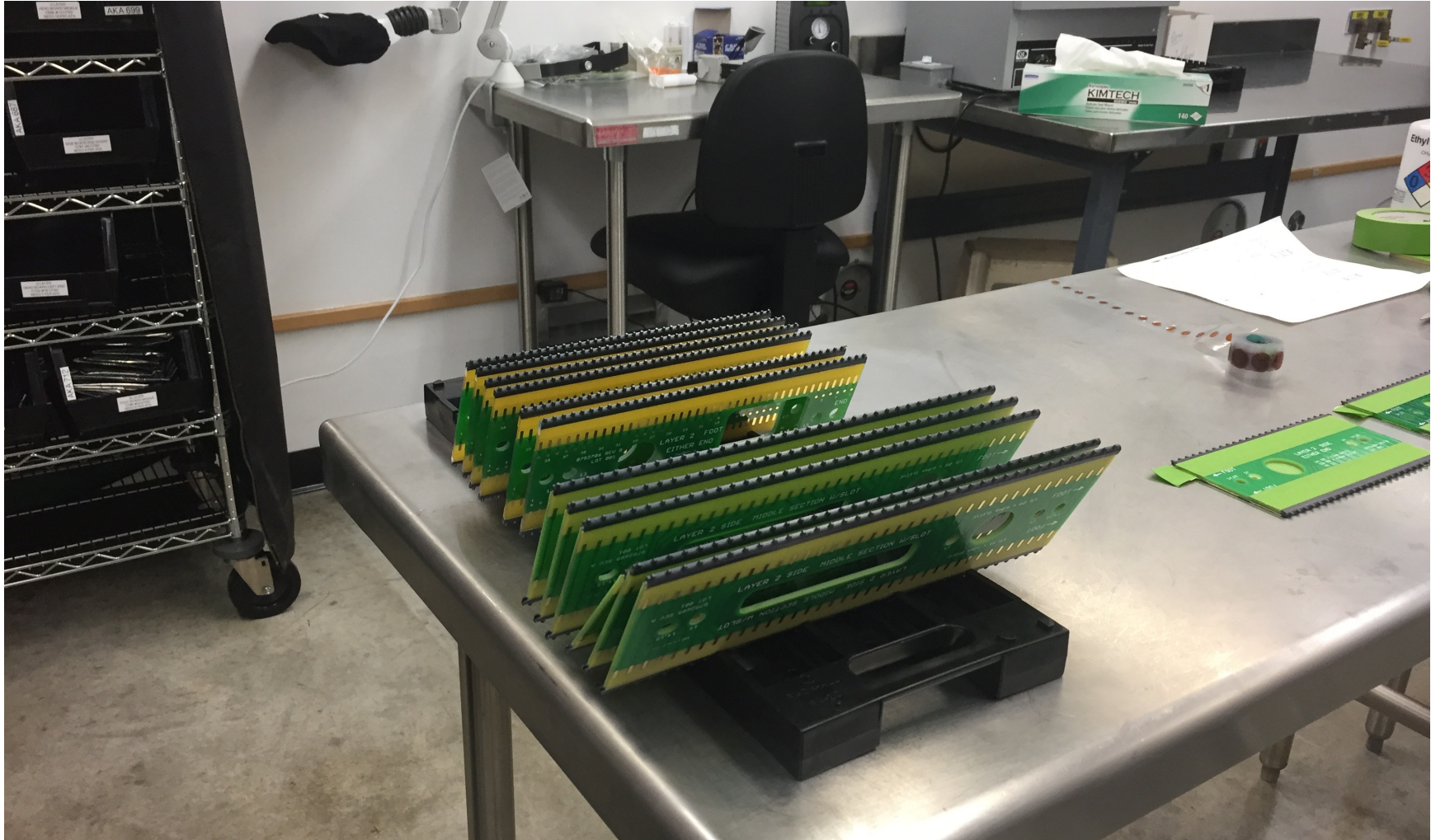
Attaching boards



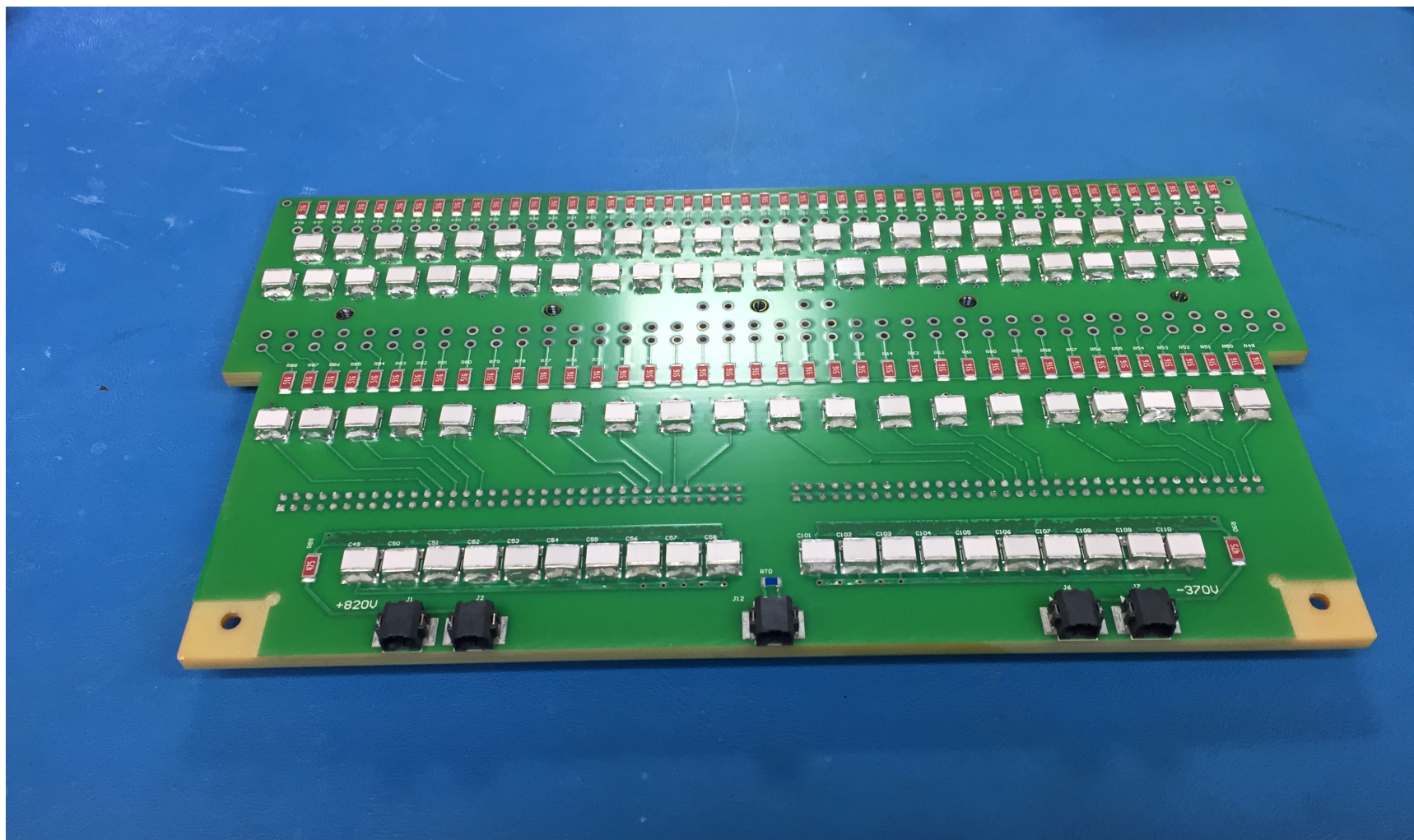
Lot's of boards







QA/QC on boards



Building frames (PSL)

