

NOvA Experiment Report

Update on NOvA Operations

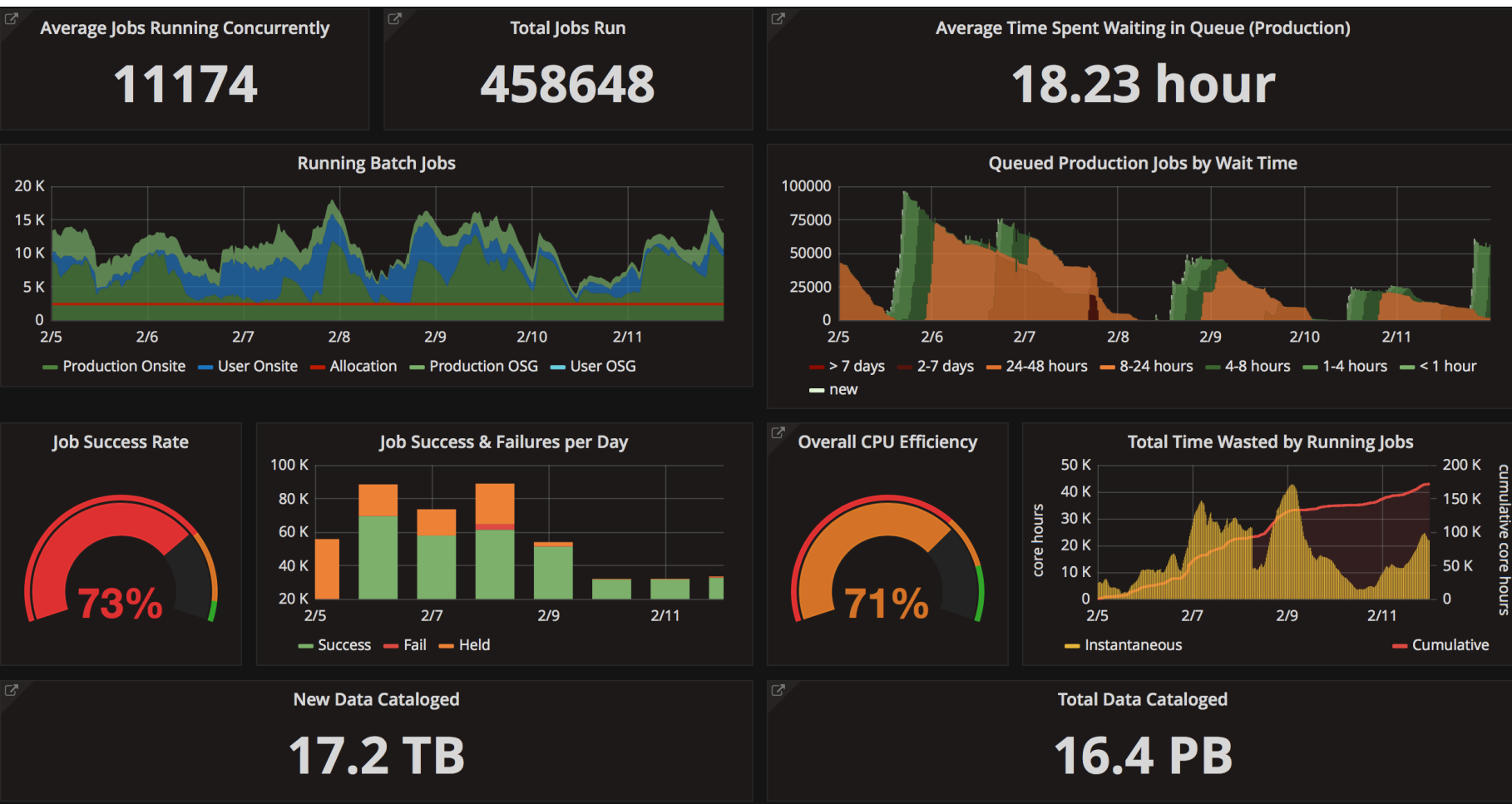


Michael Baird, University of Virginia

AEM Meeting

Monday, Feb. 12th 2018

Computing Summary:

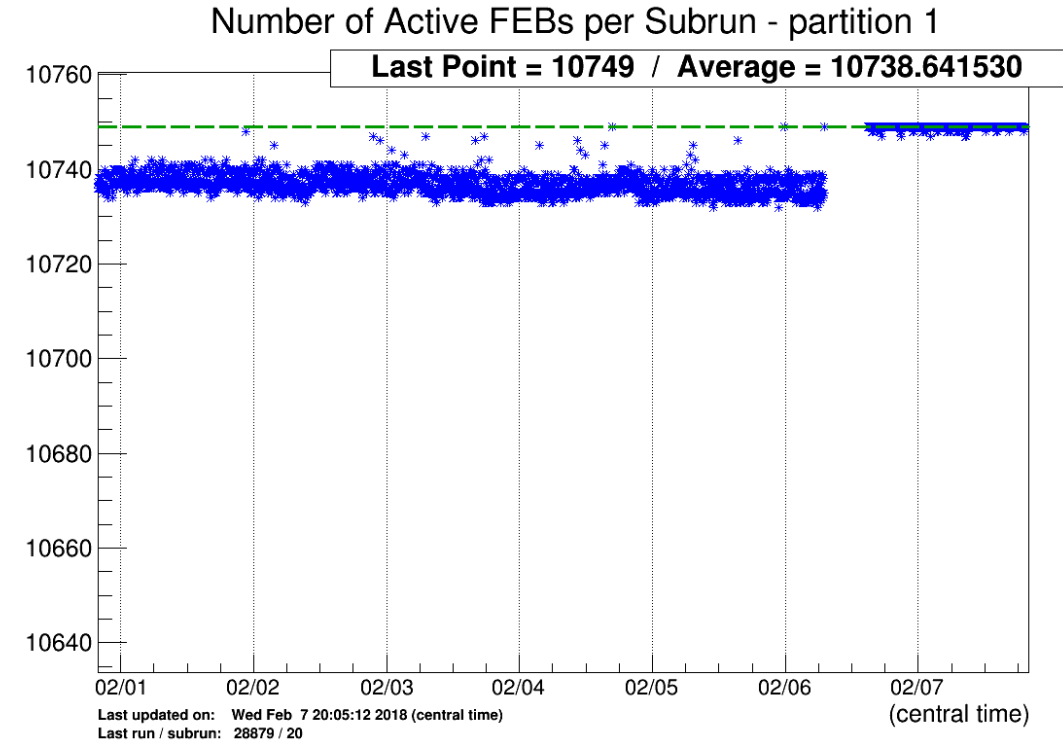


- Winter production campaign continuing to make good use of FermiGrid - almost all jobs are running onsite.
- Producing large amounts of data.
- Large number of held jobs due to misconfigured memory request, which was fixed, and jobs now running smoothly.
- Relatively low success rate, is due a SAM outage on Wednesday 7th which caused 20k jobs to fail.

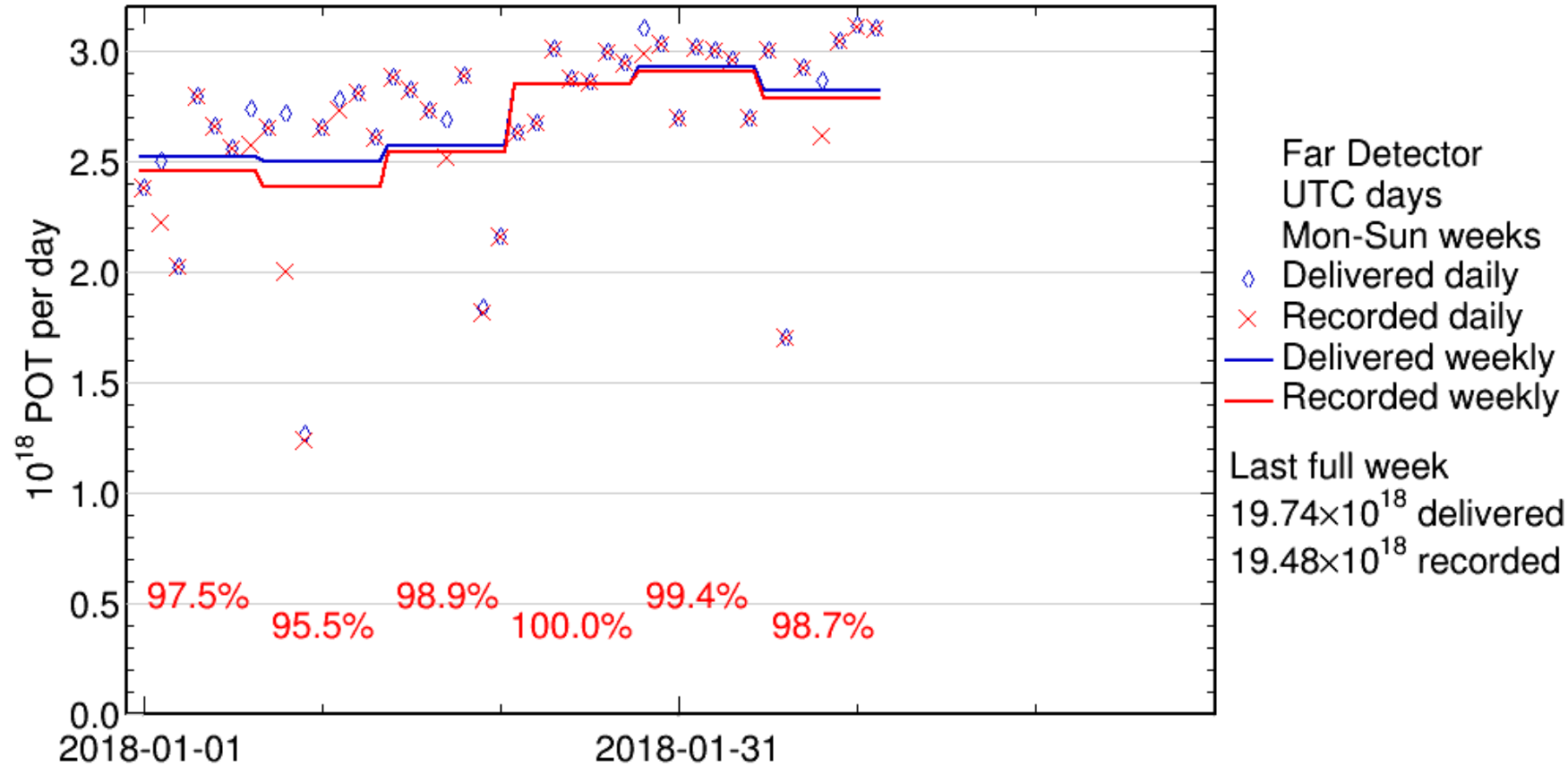
FD Downtime this week:

There were two downtimes this week:

- **~8 hours on Tuesday 02/06 (during the planned beam downtime – no beam was missed.)**
 - Swapped out known bad hardware (25 FEBs, 1 APD, 1 power supply)
- **~2.75 hours on Thursday 02/08 (unplanned)**
 - A cold water pump stopped working, which switched off the detector.
 - The pump was turned back on and seems fine, we ran with it and the backup pump over the weekend.
 - Time to investigate the pump, get everything turned back on, do checklists, etc. was ~2 hours 45 min.



FD Summary:

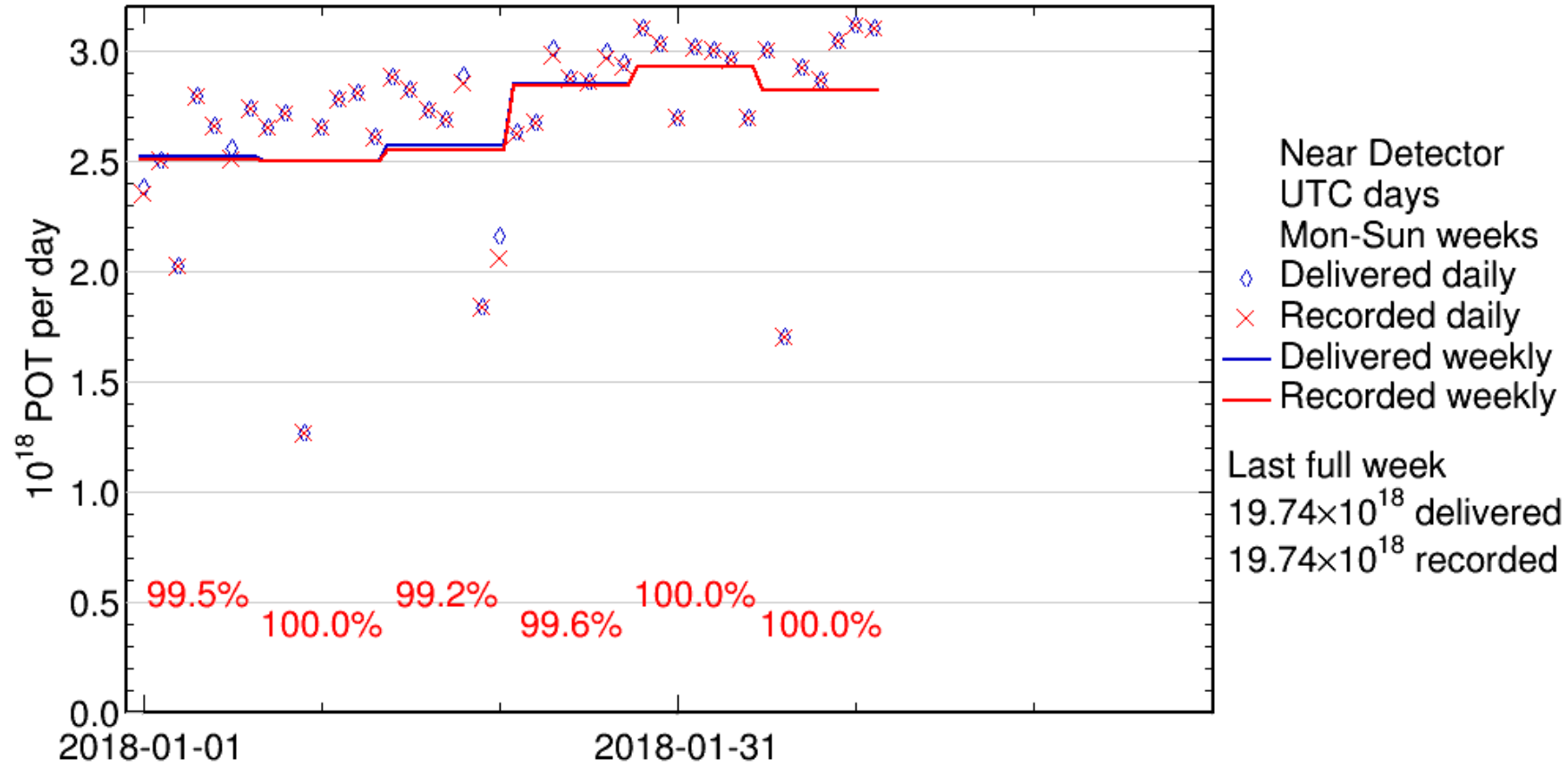


4 week ave: **99.25%**

Downtime on Thurs. 02/08 due to water pump outage.

- FY 2018 POT: 19.4×10^{19} delivered, 19.0×10^{19} recorded
- Total nu mode POT delivered: 124.06×10^{19}
- Total anti-nu mode POT delivered: 58.12×10^{19}

ND Summary:



4 week ave: 99.70%