

EHN1 status report

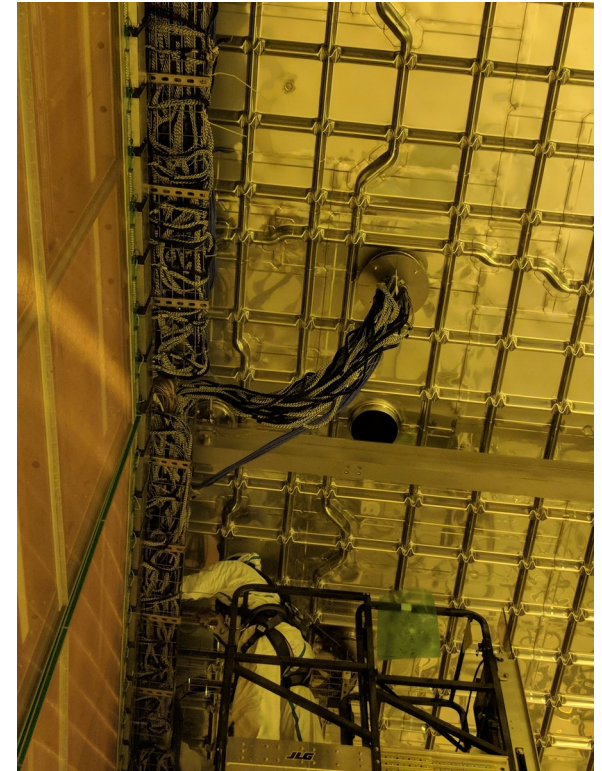
ProtoDUNE-SP ITI Meeting

March 1st, 2018

APA 1-3



- APA3 cables pulled out of the chimney Tuesday afternoon
- APA2 cables pulled out of the chimney yesterday. The operation took much longer as the CTC wasn't pre-installed on the cables (as done on APA3)
- APA1 cables will be pulled by end of the day tomorrow



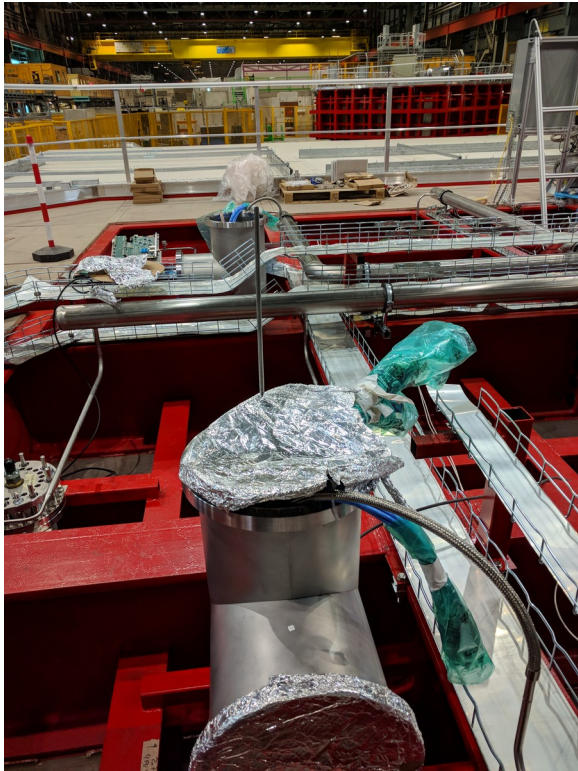
- Cables are currently being tested again before being connected to the flanges
- APAs top latches installation and bottom latches test fit between today and tomorrow
- Inspection of APA plane today revealed a few details here and there (small bolts sticking out of APA side, cable trays still too close to membrane, etc) which will need to be fixed before deploying the field cages

APA 4

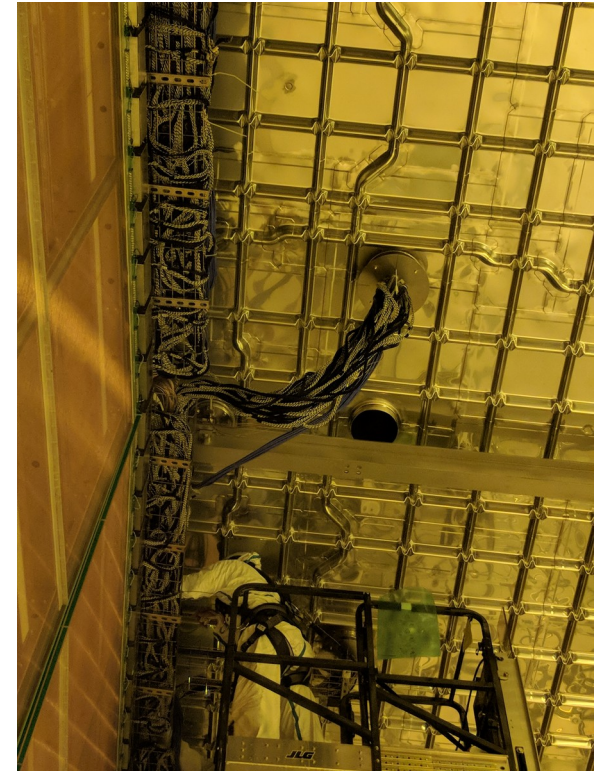
- Unpacked on Monday, entered the Clean Room Tuesday morning
- Cable tray installation, visual inspection and wire tension measurement yesterday
- No issues found during visual inspection. Pictures will be taken at the next available moment
- PD installation currently ongoing. Planning to be completed by Monday
- CE installation starting next week



APA 1-3



- APA3 cables pulled out of the chimney Tuesday afternoon
- APA2 cables pulled out of the chimney yesterday. The operation took much longer as the CTC wasn't pre-installed on the cables (as done on APA3)
- APA1 cables will be pulled by end of the day tomorrow



- Cables are currently being tested again before being connected to the flanges
- Inspection of APA plane today revealed a few details here and there (small bolts sticking out of APA side, cable trays still too close to membrane, etc) which will need to be fixed before deploying the field cages

End Walls

Are in!



- Minor cutting work on G10 edges to make sure we avoid interferences with CPAs
- Downstream End Wall inserted yesterday, upstream one this morning
- All TPC elements for first drift volume are now inside the cryostat

Cryostat Roof

- Purge pipe installation completed
- Leak and pressure tests now ongoing
- Copper sheets installed on cable trays
- Supports for SSP racks and cable tray from cryostat roof to DCS racks under preparation



Near future schedule

- Today→ Monday
 - Complete PD installation on APA4
 - Complete routing out of the cryostat and test of APA1-3 cables
 - Install APA top latches and test-fit bottom latches as well

- Weeks March 5th – March 18th
 - Install CE on APA 4 (5th → 11th) and Cold Box tests (12th → 18th)
 - Cable CE and PD flanges on top of the cryostat for APA 1-3 (5th → 11th)
 - Install Beam plug feedthrough and set upstream-right End Wall in place
 - CPA plane in position, QA tests
 - Installation temperature sensors on cryostat walls
 - False floor modification second drift volume

- Weeks March 19th – April 1st
 - Field cage deployment for first drift volume
 - APA 4 cold box test and insertion inside the cryostat
 - End Wall 3 and 4 assembly
 - False floor modification second drift volume