



NOvA Experiment Report

Update on NOvA Operations

Reddy Pratap Gandrajula, Michigan State University

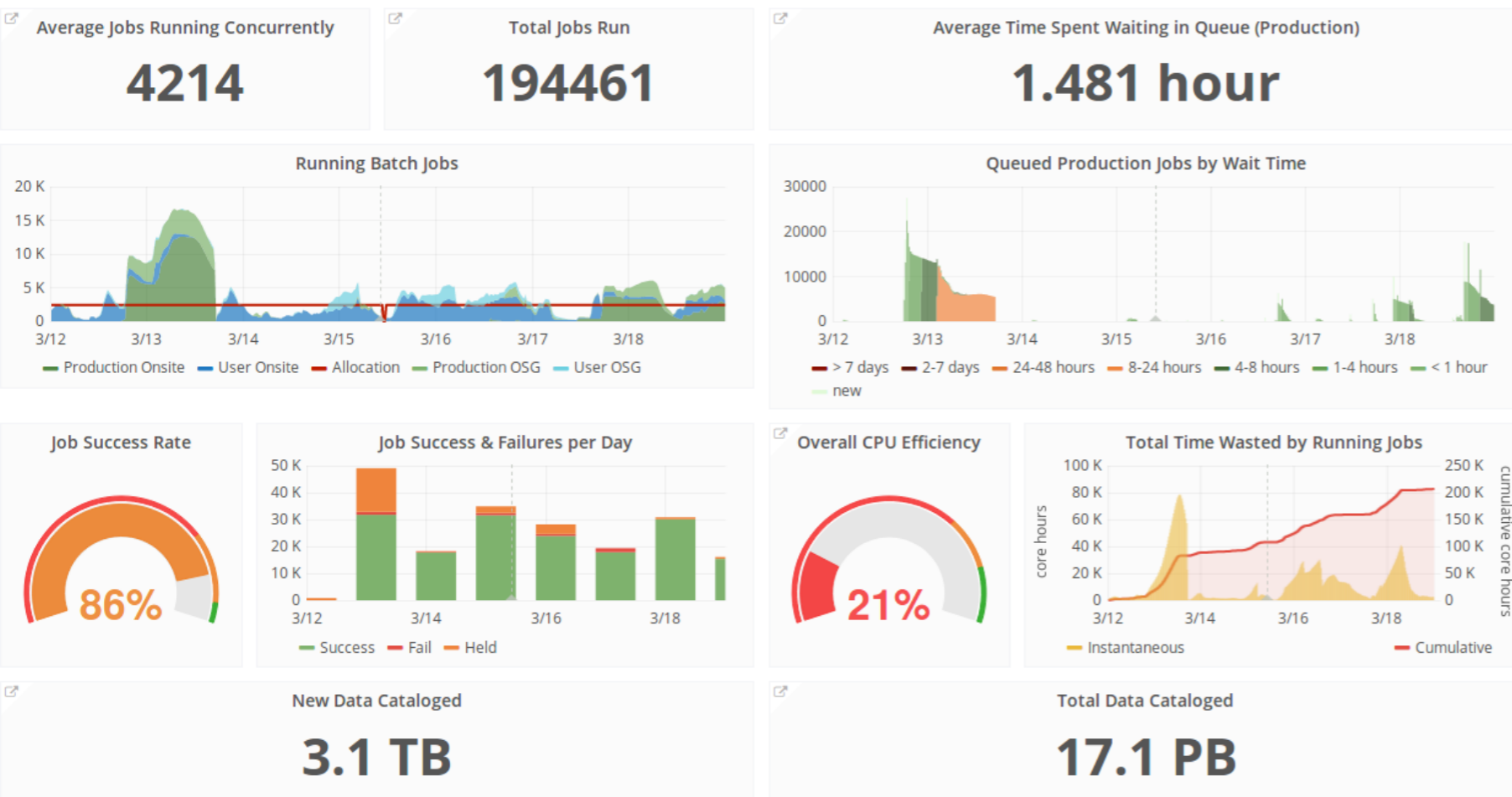
AEM Meeting

Monday, March 19th, 2018

Computing Summary:



NOvA Computing Summary



- Winter production campaign in short hiatus. Resumes this week

- Low CPU efficiency is a result of workflow that runs very quickly over many files (dominated by time to transfer input files from cache). Will continue for another few weeks

FD work:

Ash River did maintenance work dry gas system

- Installed and added new parts on the compressor/drier system to have a stable pressure flow in the FarDet dry gas system, and tested the compressor & drier #1 system to have a good viable backup to the current dry gas system (compressor & drier #2)

Thanks to Ash River experts Thomas Wieber, Erik A Voirin , and Charles Cadeau for their work.

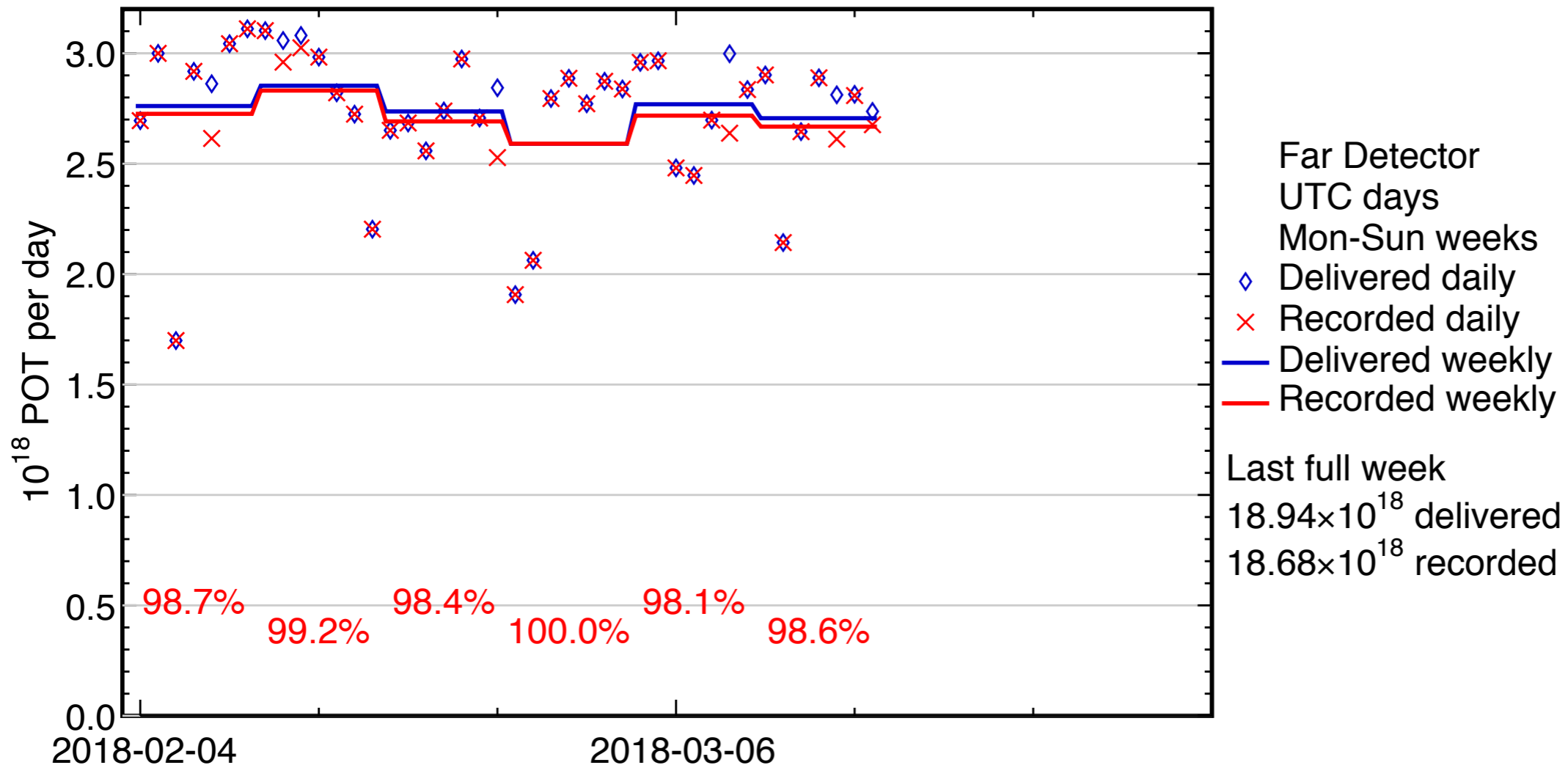
- There was a high rate of network traffic observed yesterday, the network issue was disruptive E.g., there were times when we could not have shut down detector LV or HV, or DAQ cluster power if we needed to. However, we were able to continue data taking. The networking engineers are understanding the problem, and are working on a plan to avoid a repeat.

NuMI Beam downtime in upcoming week:

- Ash River experts are prepared to swap some noisy channels on the Far Detector.

FD Summary:

Four-week mean POT-weighted uptime: 98.8 %



● FY2018 POT: **28.9×10^{19}** delivered, **28.4×10^{19}** recorded

● Total nu mode POT delivered: **124.06×10^{19}**

● Total anti-nu mode POT delivered: **67.66×10^{19}**

ND Summary:

Four-week mean POT-weighted uptime: 98.4 %

