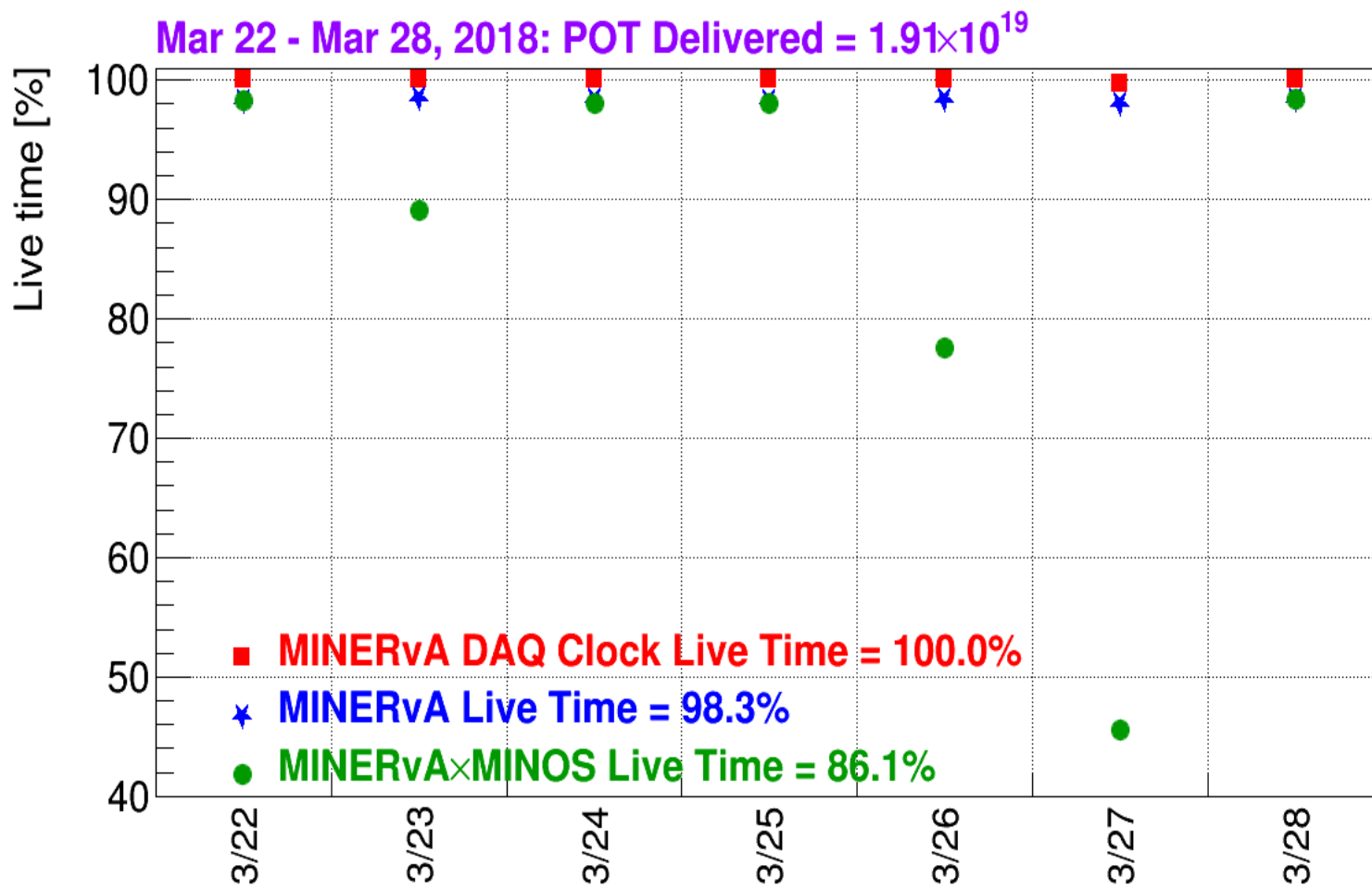


# The MINERvA Operations Report All Experimenters Meeting

Howard Budd, University of Rochester  
Apr 2, 2018



# $\nu$ Data

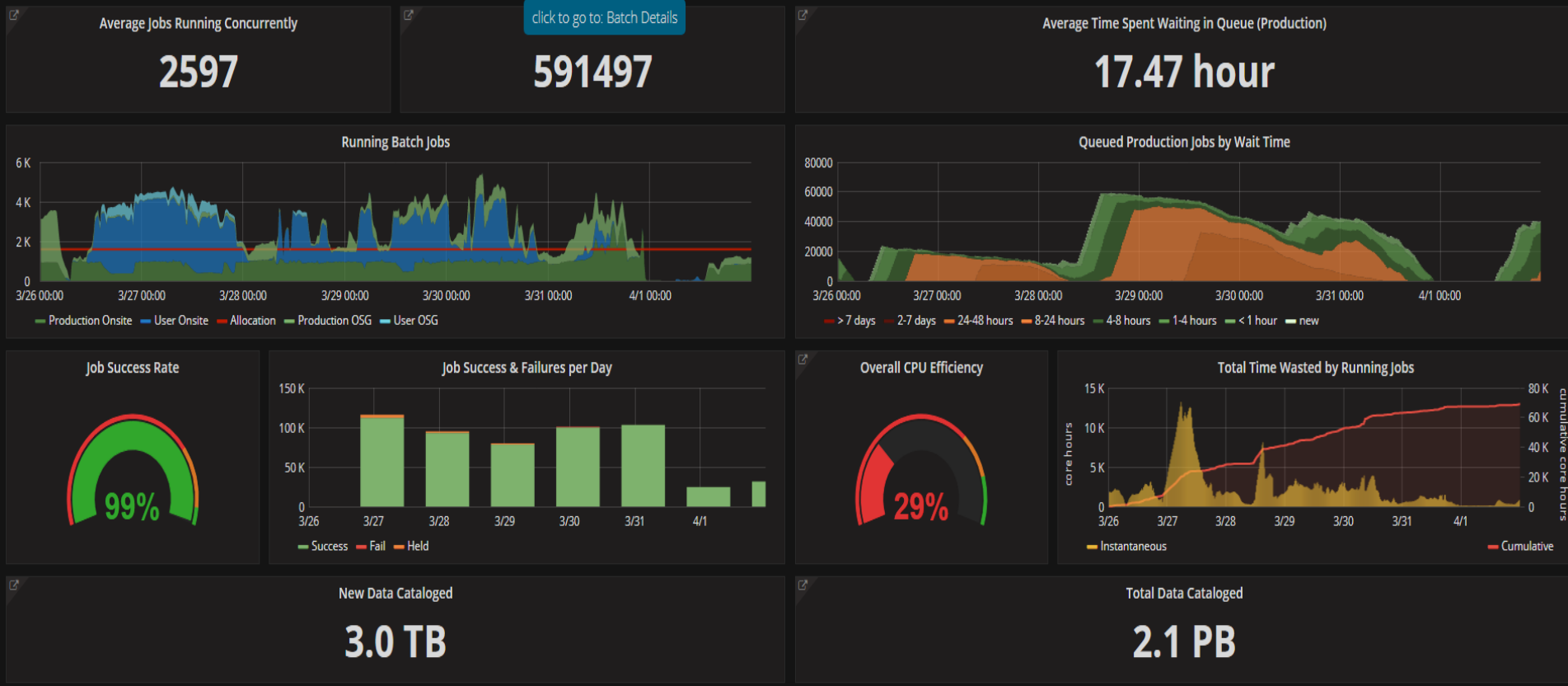




# Down Times



- Mar 23, 90.4% MINOS live
  - Weiner power supply in Master Crate 2 blew a fuse. The power supply was bad. The power supply was replaced.
- Mar 26-27, 62.6% MINOS live
  - Weiner power supply for Master Crate 2 trips, same power supply that was replaced on Mar 23. It appeared the remote sense line was loose. The remote sense connector was tightened. The power supply turned on, but it tripped again ~ 2 hours later. The power supply was replaced and the replacement has been OK since. We do not know the reason of the supply failed. Investigations continue.
- We thank Steve Hahn & Donatella Torretta of ND & Dave Huffman of PPD – EED.



- Average concurrent jobs are higher than quota (average quota is ~1600) due to production job.
- Job success rate is good.
- Overall CPU efficiency is 29%.
  - Dominated by the ongoing production GENIE job issue. Actively working with FIFE on addressing this.