



# **NOvA Experiment Report**

## **Update on NOvA Operations**

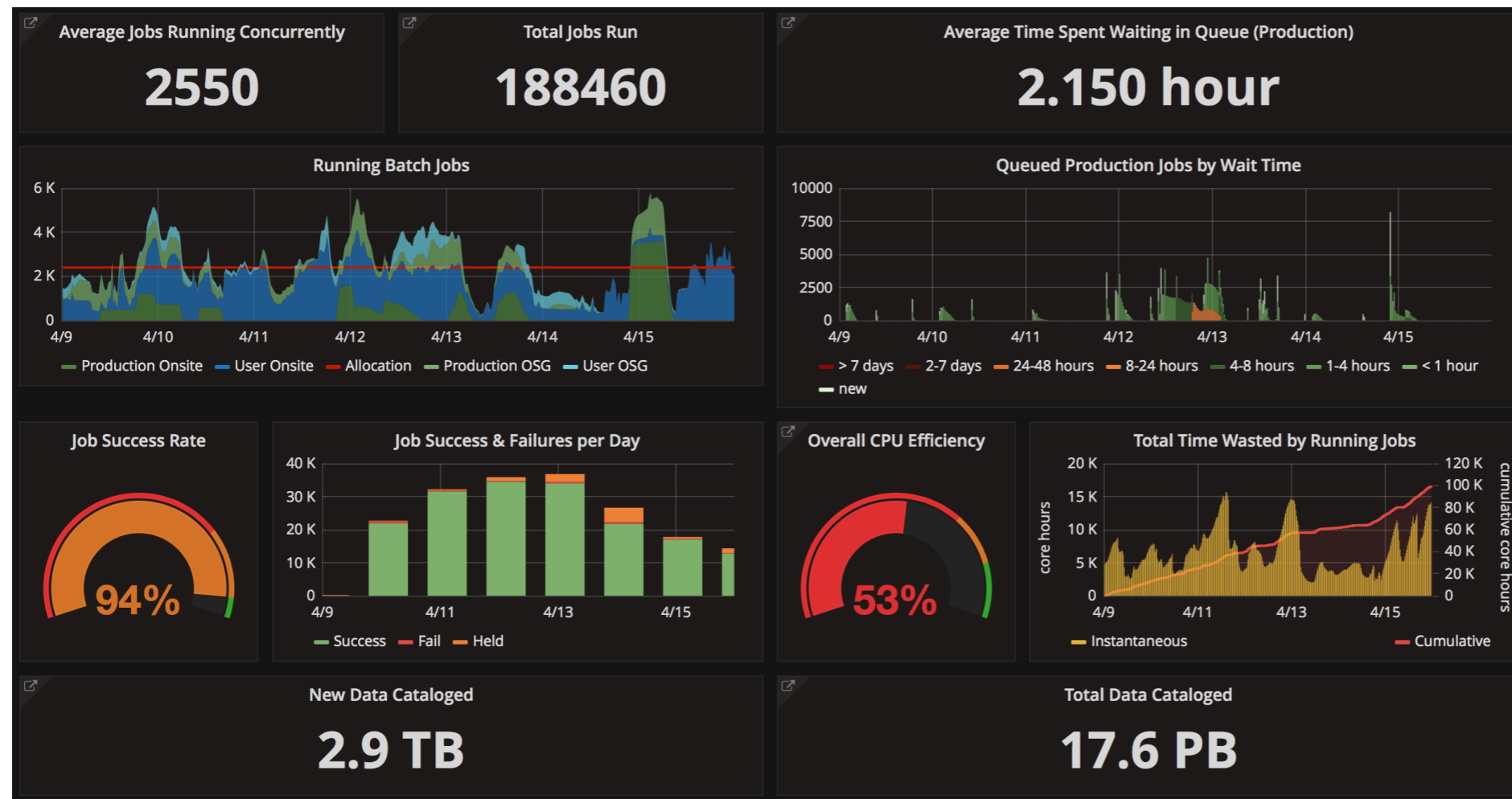
---

Reddy Pratap Gandrajula, Michigan State University

AEM Meeting

Monday, April 16<sup>th</sup>, 2018

# Computing Summary:



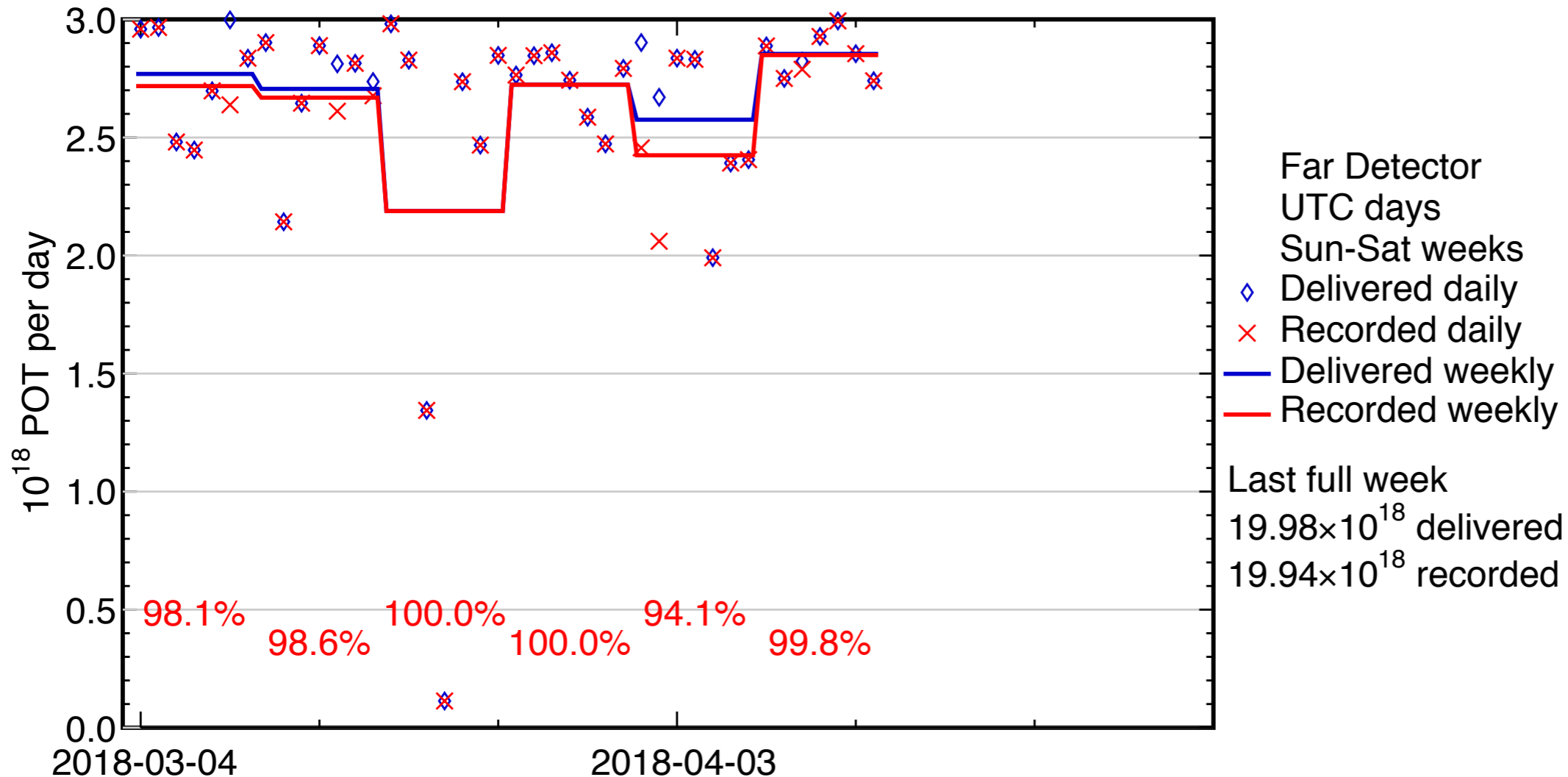
- Winter campaign nearing conclusion. This week has seen the final push for data reconstruction as the dataset closes in preparation for Summer Conferences.
- Low efficiency driven by user jobs which are inherently less efficient than production jobs. We will provide advice to users to improve the efficiency of these jobs

# Summary of operations

- We have approved to extend the supernova trigger readout timing window to 45s (currently at 1s). We will implement this when we have more than one hour opportunistic beam downtime.
- Two short Near Detector downtimes due to DAQ problems, which we have seen before, resulting in minor downtimes.
- Far Detector was running well.

# FD Summary:

Four-week mean POT-weighted uptime: 99.5%



- FY2018 POT:  **$3.60 \times 10^{20}$**  delivered,  **$3.54 \times 10^{20}$**  recorded

- Total nu mode POT recorded:  **$11.46 \times 10^{20}$  ( $8.85 \times 10^{20}$  14 kt equiv.)**

- Total anti-nu mode POT recorded:  **$7.33 \times 10^{20}$**

# ND Summary:

Four-week mean POT-weighted uptime: 99.9 %

