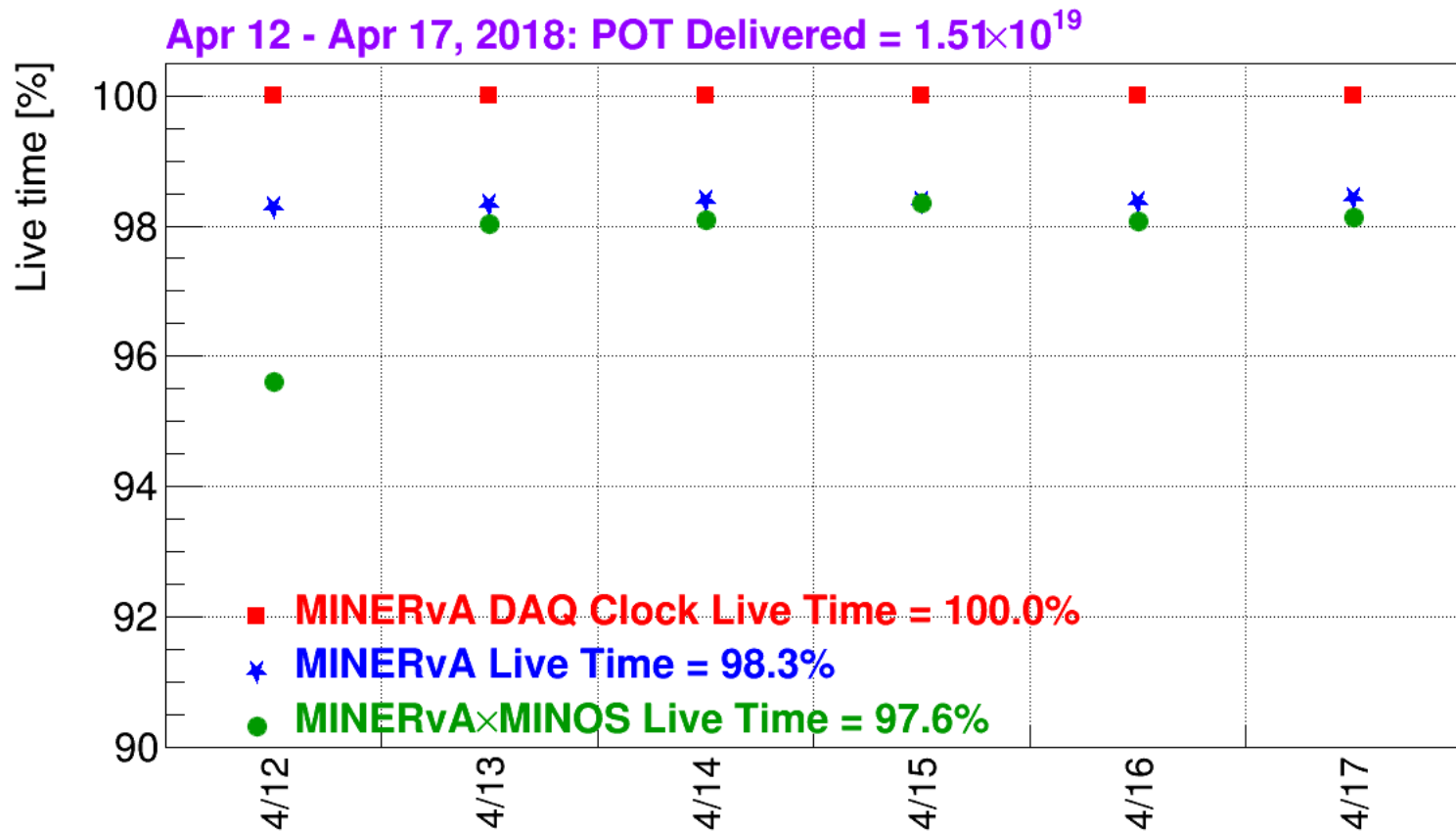


# The MINERvA Operations Report All Experimenters Meeting

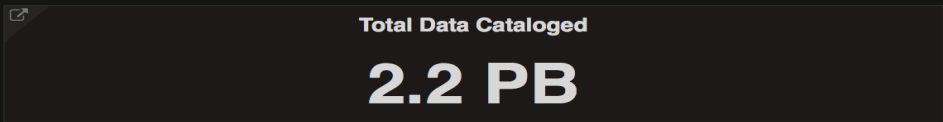
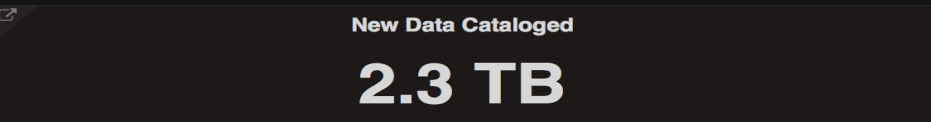
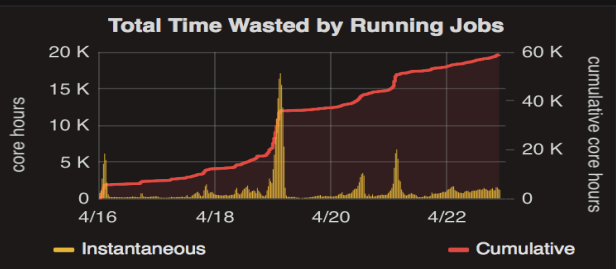
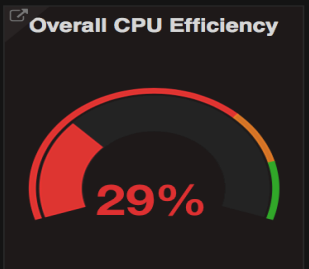
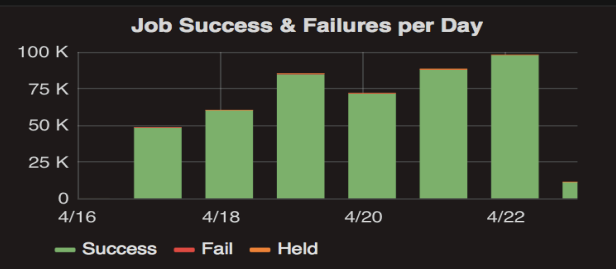
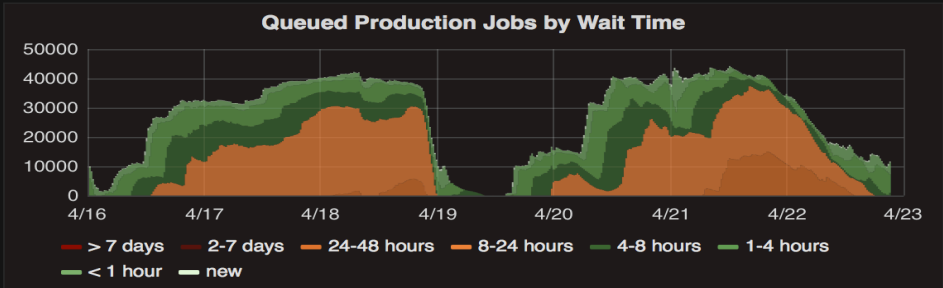
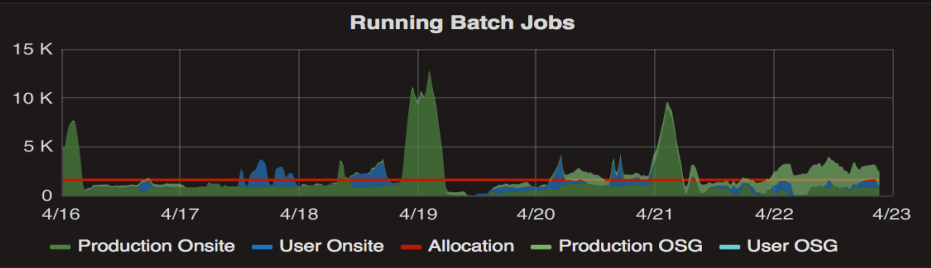
Howard Budd, University of Rochester  
Apr 23, 2018



# $\nu$ Data



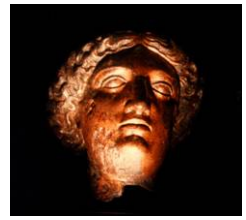
- Apr 18
  - Keepup problems caused problems for analyzing the Apr 18 data. We are investigating. We will report on this next week.



- Average concurrent jobs are higher than quota, ~1600, due to production job.
- Job Success Rate is 100%
- Overall CPU efficiency is low due to
  - Inefficiency is due to GENIE stage (generator) in the production job.
  - Scheduled maintenance on 04/19 interrupted dCache.



# Computing



- GENIE
  - GENIE job is very short (20~30 min level), so the efficiency is underestimated in FIFEMon.
  - GENIE job accesses flux files through StashCache and the performance of StashCache is not good due to dCache issue.
  - FIFE group is working on investigating why dCache doesn't work well for GENIE.