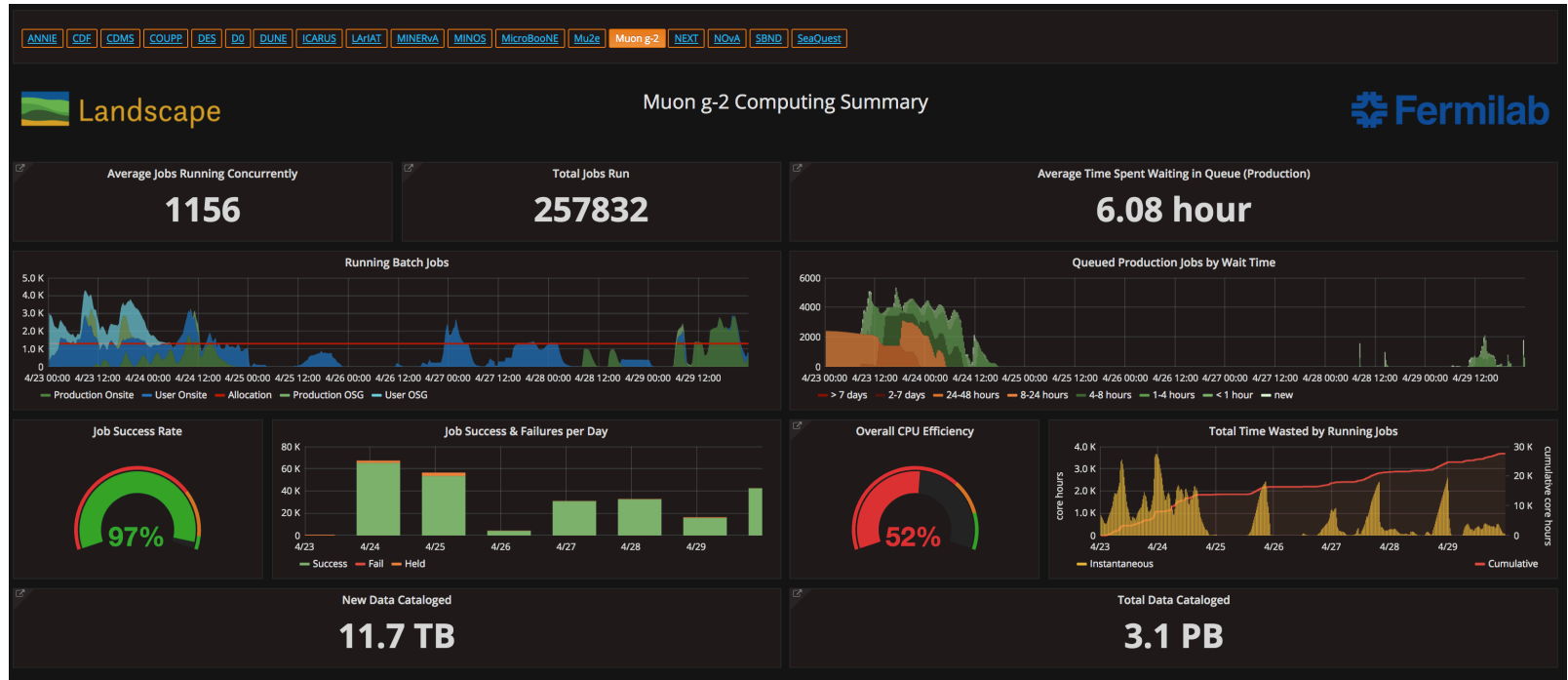


# Muon $g-2$ AEM Update

Brendan Kiburg, Jarek Kaspar  
Apr 30, 2018

# Computing

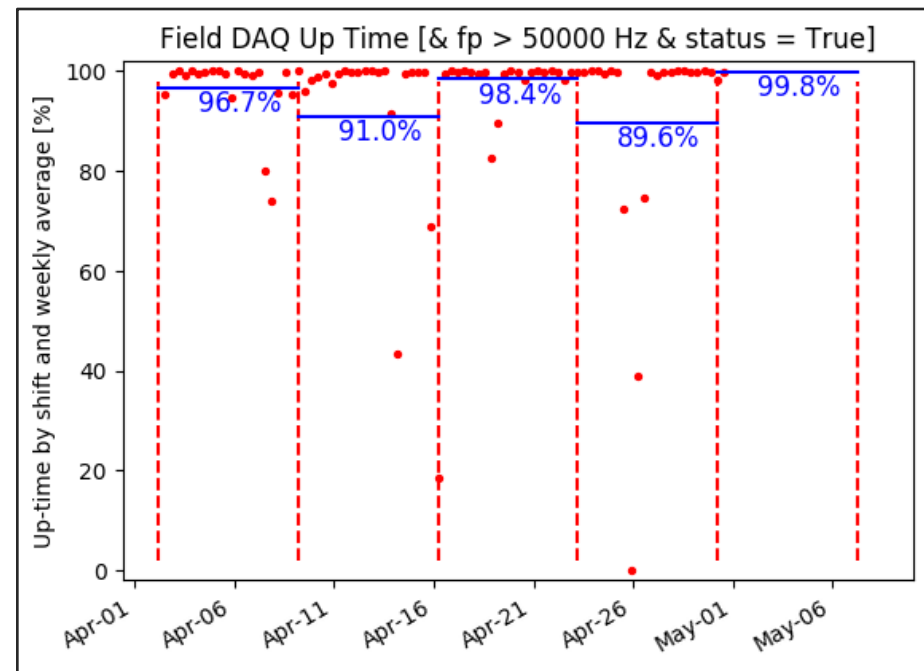
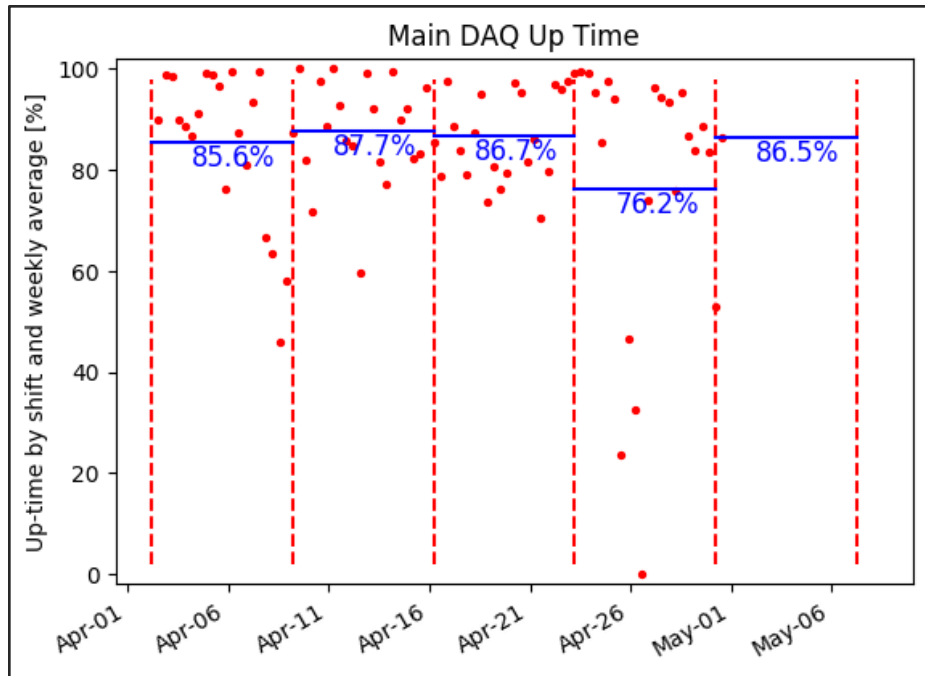


- 52% CPU efficiency with recent release
- Some production pauses due to tape issues
- Big improvement with the data→dcache→tape rate
- Still addressing the data writing rates

# We had a good week operationally

- 5.5 days production running (3 trolley runs) [high setpoints]
- 1 Magnet OFF day
  - Kicker/Quad Measurements
  - DAQ (tracker, laser, data rate, cvmfs)
  - Cryo (fridge room maintenance, helium, nitrogen tuning)
  - Mu2e (network, fridge room)
  - Building maintenance (crane, fire, door, lift, air)
  - Beam (ion pumps, surveys, chipmunks)
  - Field quality (strain gauges off, motion safety systems)
- 0.5 days of Absolute calibration measurements
- Problems
  - 1 calo crate needed to be swapped

# DAQ Up Time Trend Plots

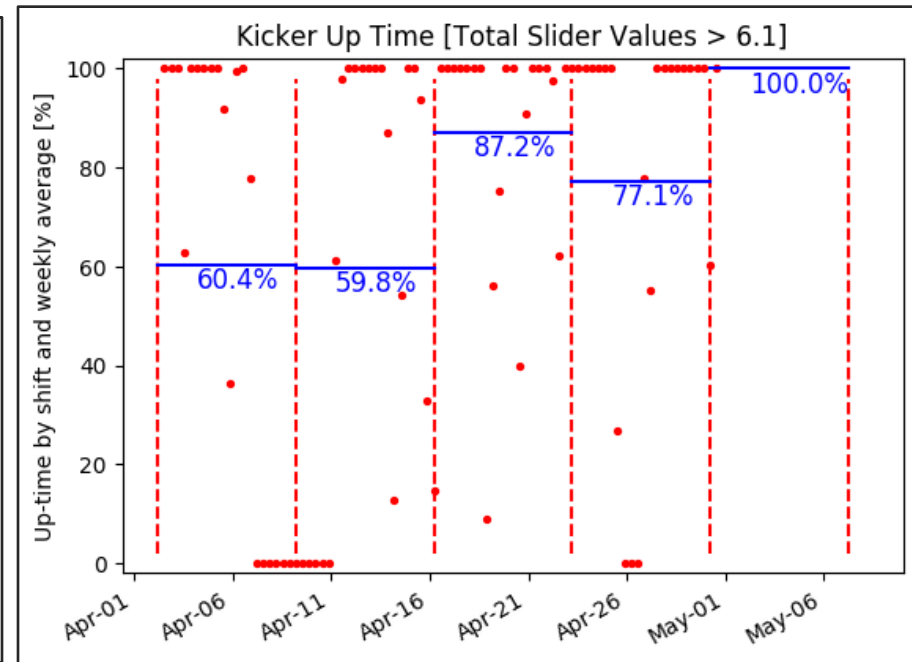
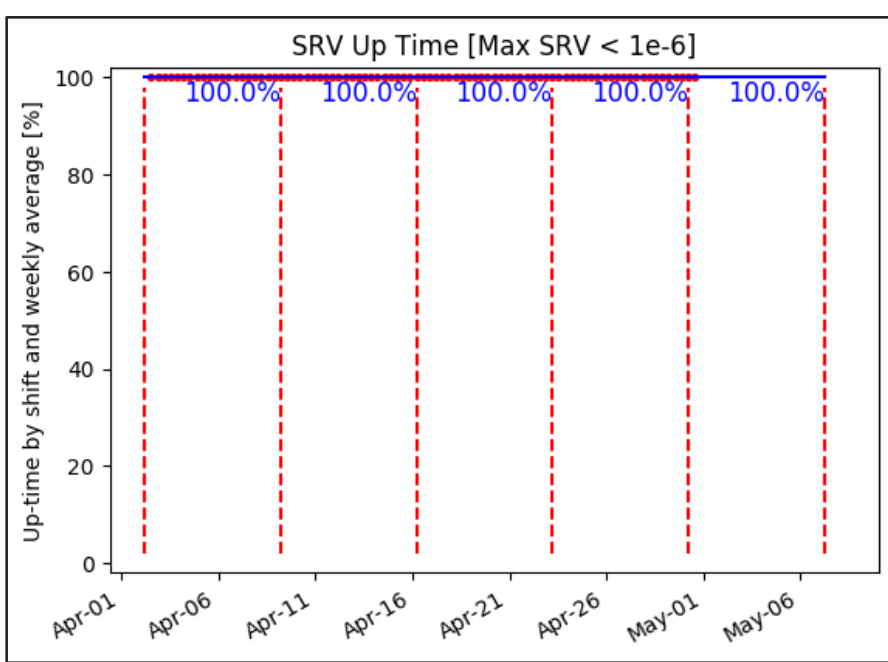


DAQ is adjusting to the new data rate. Tweaking settings

Turned off DAQ/logging during shutdown → data to tape issues

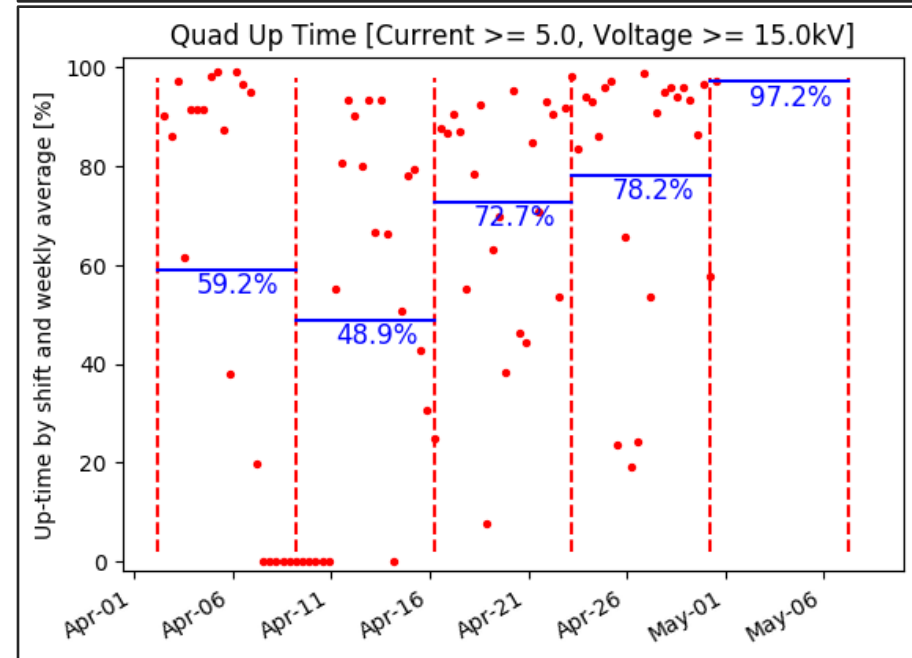
16 hours magnet off, field daq not in use during that time

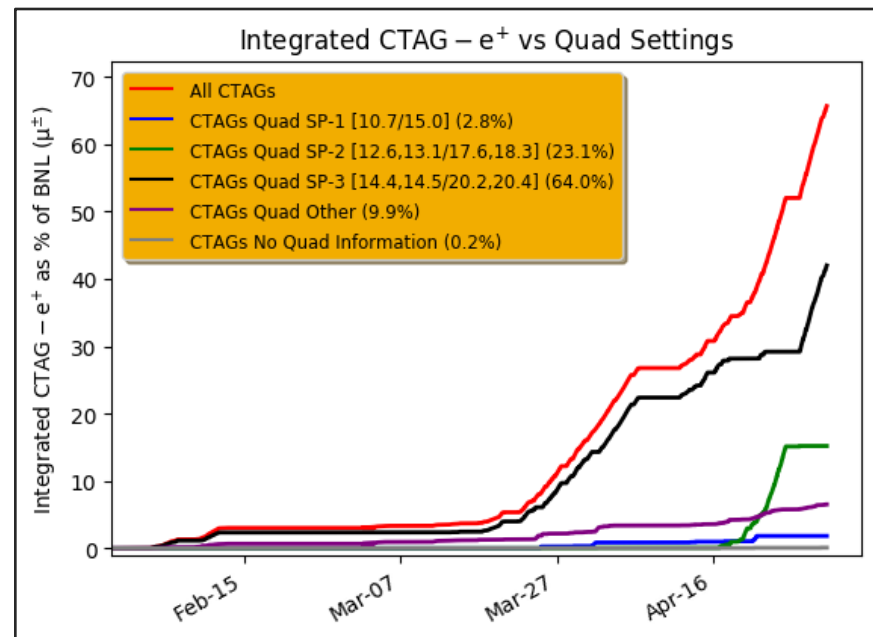
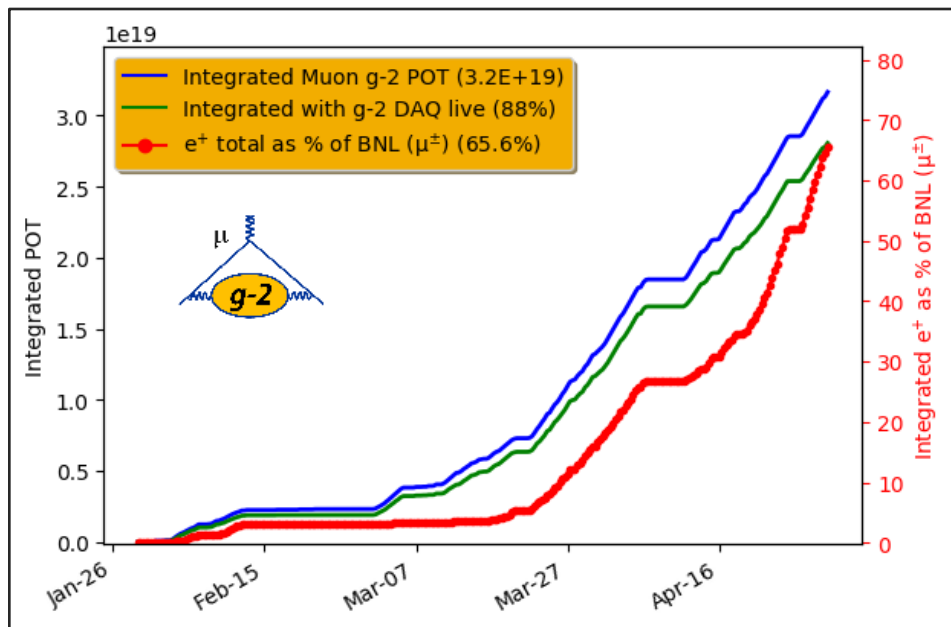
High efficiency



## Trend Plots Ring

- SRV up for a while now
- Kickers only down for trolley runs and magnet off period
- Quads ran happily at high setpoint. Off for magnet downtime





## Performance

- Quads at high setpoint all week
- 5.5 days running
- ~0.66 x BNL since 3/21 (0.21x BNL since last AEM)
- 88% POT weighted livetime
- Our best shifts e<sup>+</sup> continue to get better (still true)

