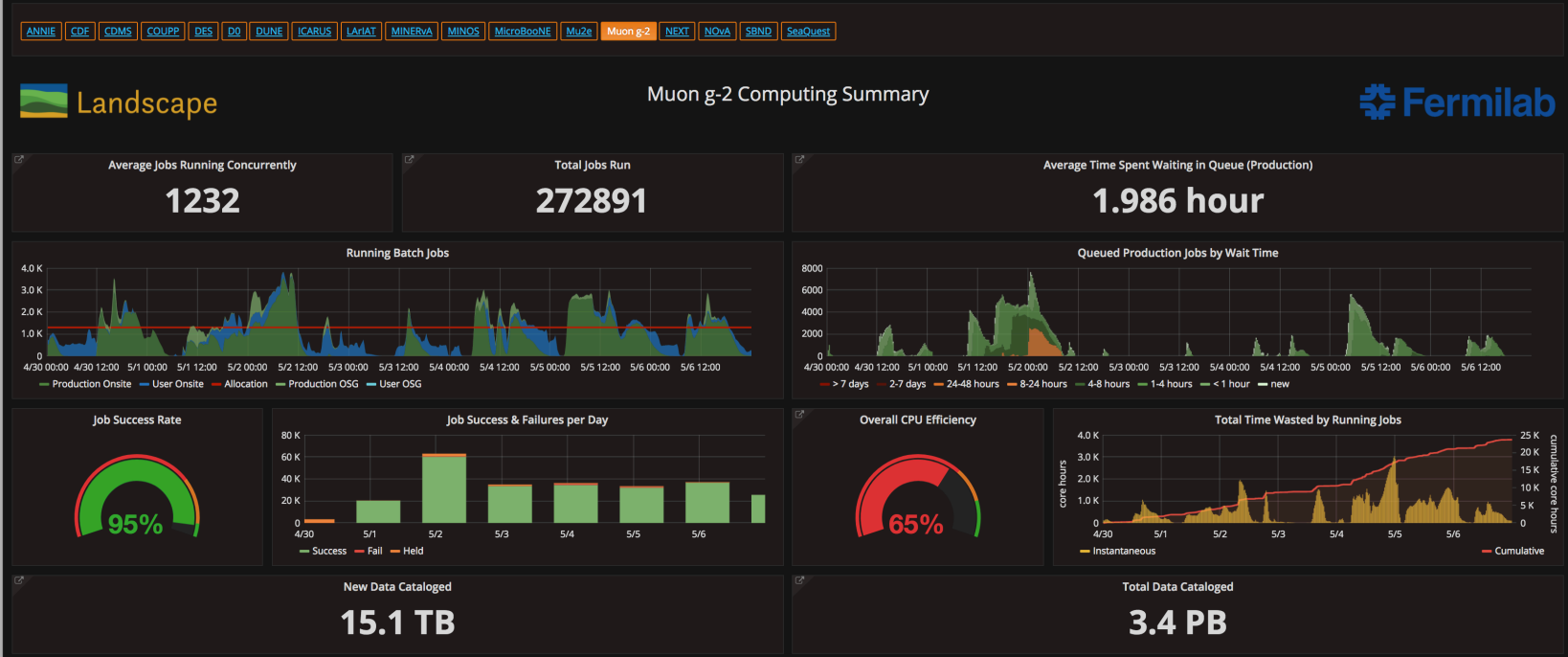


# Muon $g-2$ AEM Update

Brendan Kiburg, Jarek Kaspar

May 7, 2018

# Computing



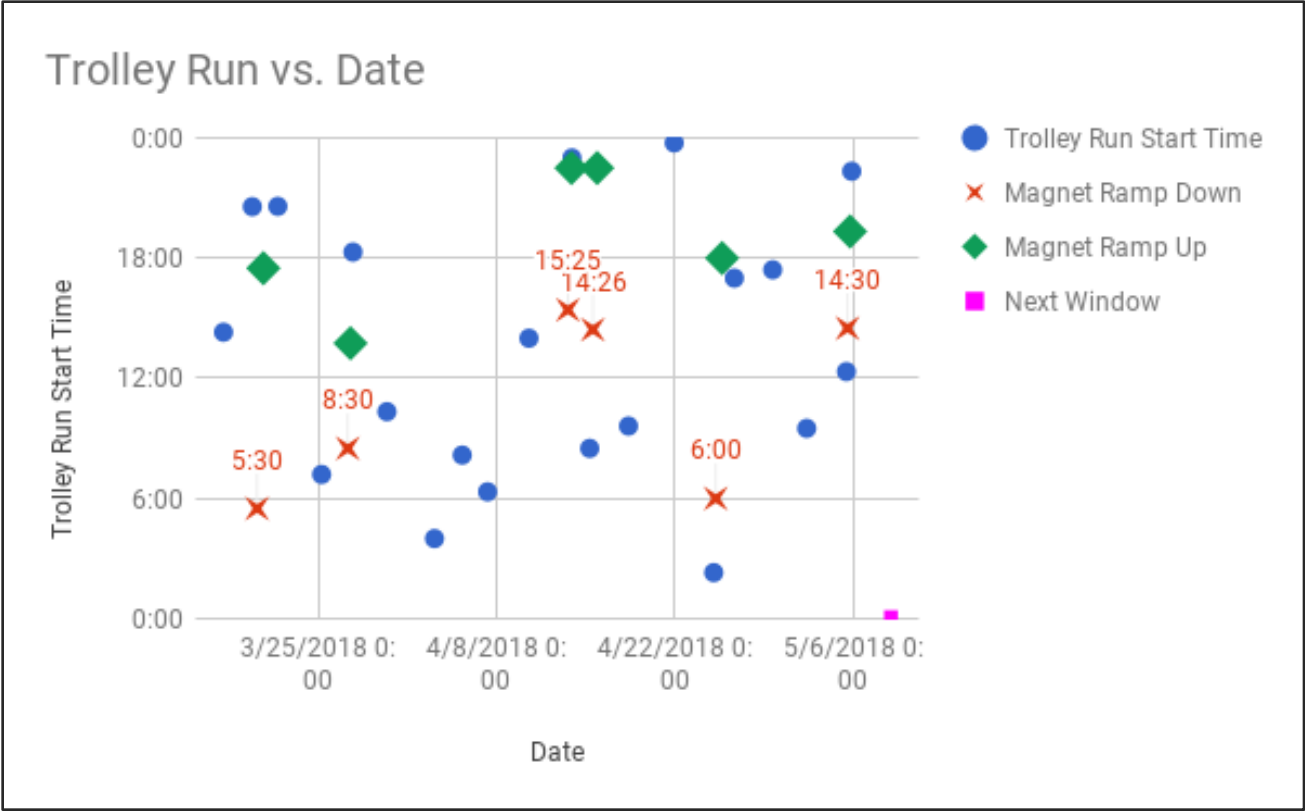
- Relative improvements
- Production is moving again

# This week: Stable Running + Stranger Things

- Production all week
- Lost 5/5 Eve shift (slow dump magnet, cryo permit)
  - Had just validated data with a trolley run
  - Had to do 2<sup>nd</sup> trolley run after recovery
- 5/6 Owl Shift - Kicker 2 dropped out
  - Assembled personnel
  - Diagnosed as a power supply that charges the cap bank
  - Ultimately found a blown fuse in the cap bank & replaced
- Temperature issues in the hall
  - Various systems are becoming unhappy

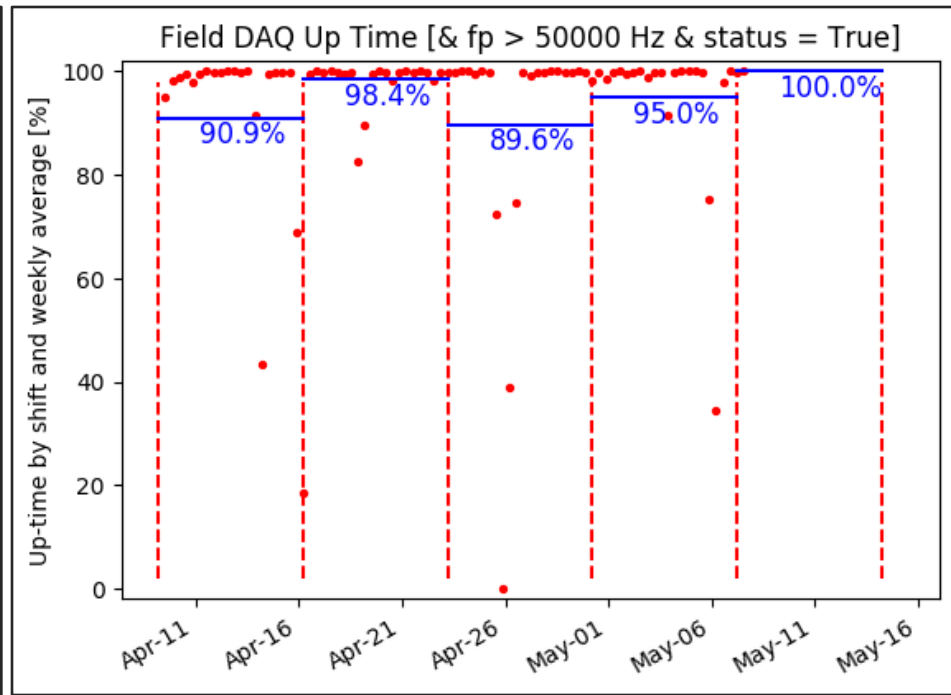
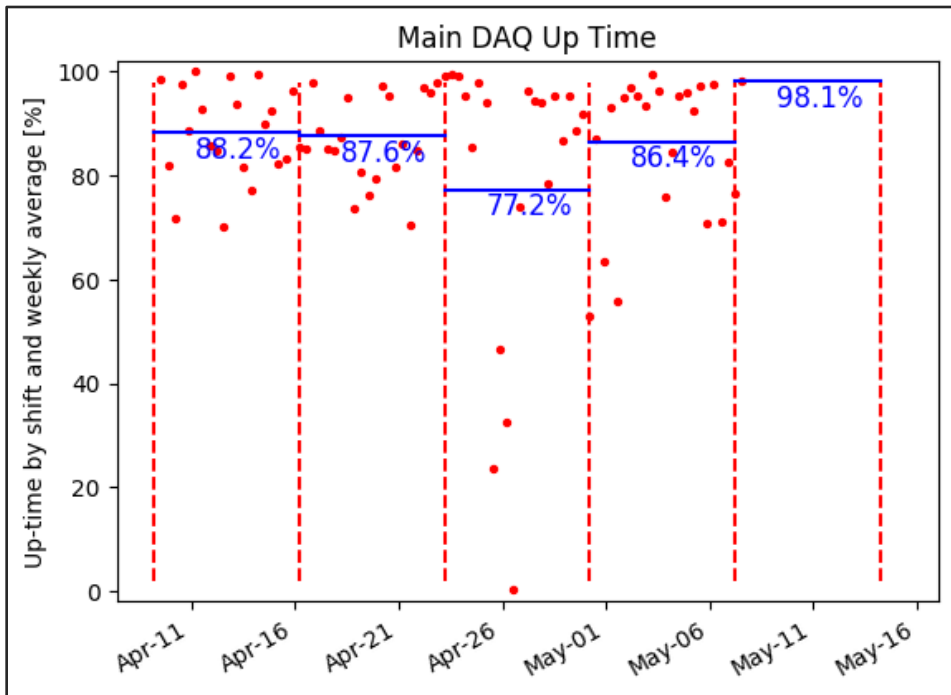
# Trolley Runs Continue

- Three trolley runs since last week



- Will expand the 8 pm to 4pm slots

# DAQ Up Time Trend Plots

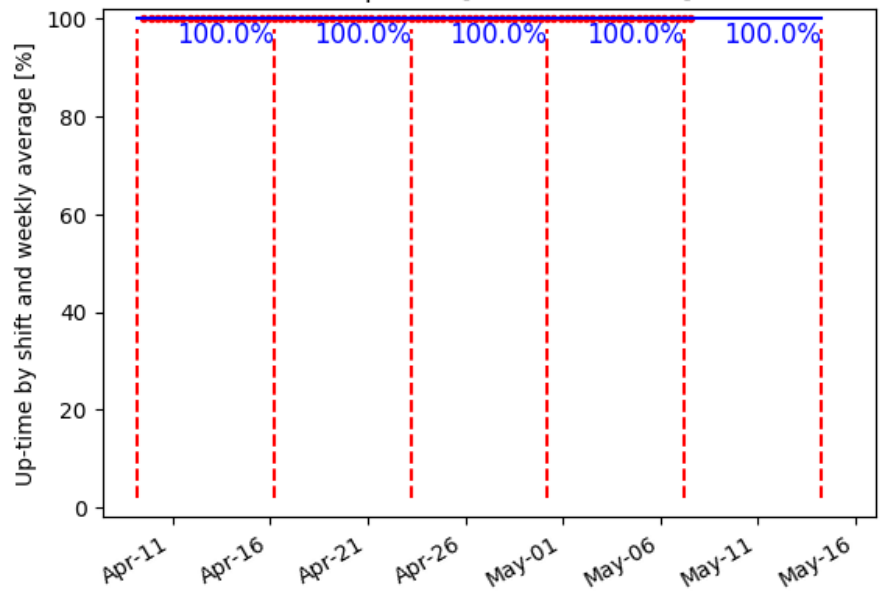


Reasonable week  
Have been turning off during  
trolley runs and extended  
downtimes to assist data transfers

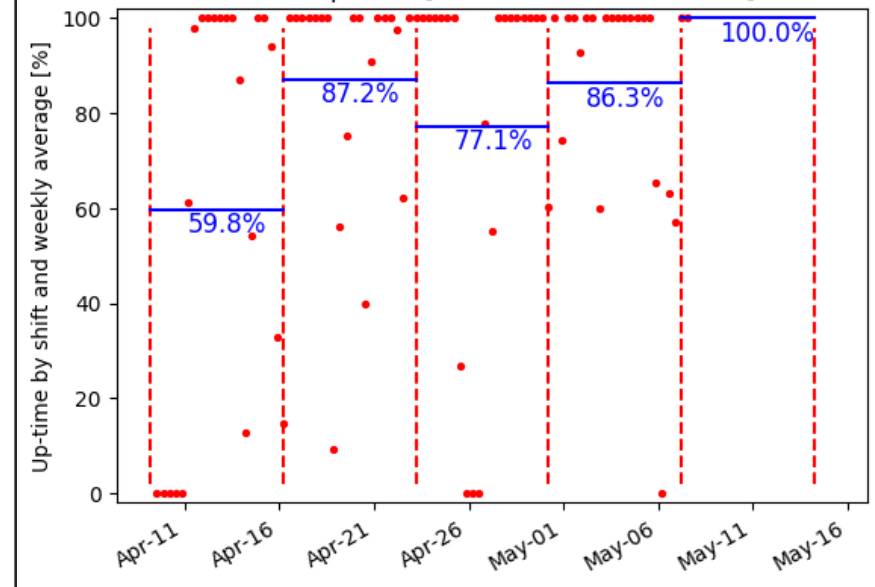
Only off during magnet down  
time

High efficiency

SRV Up Time [Max SRV < 1e-6]



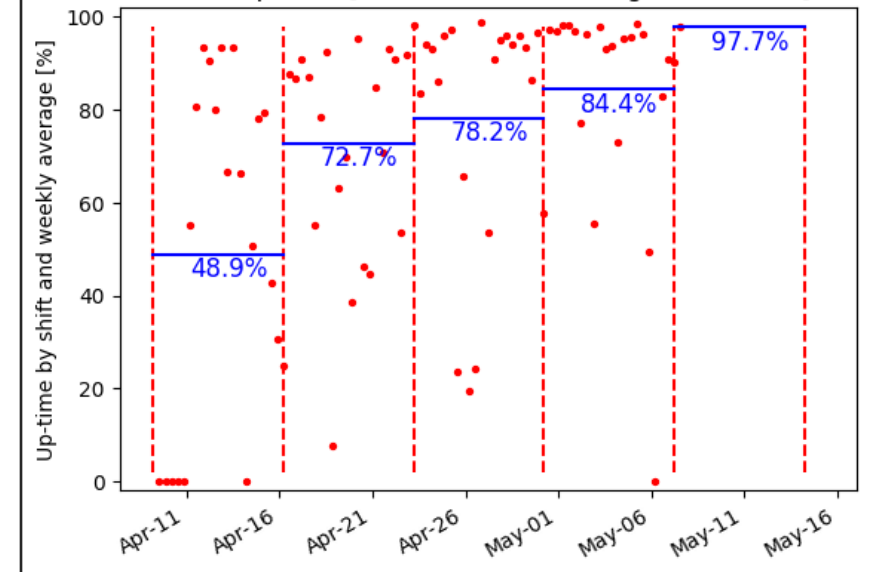
Kicker Up Time [Total Slider Values > 6.1]

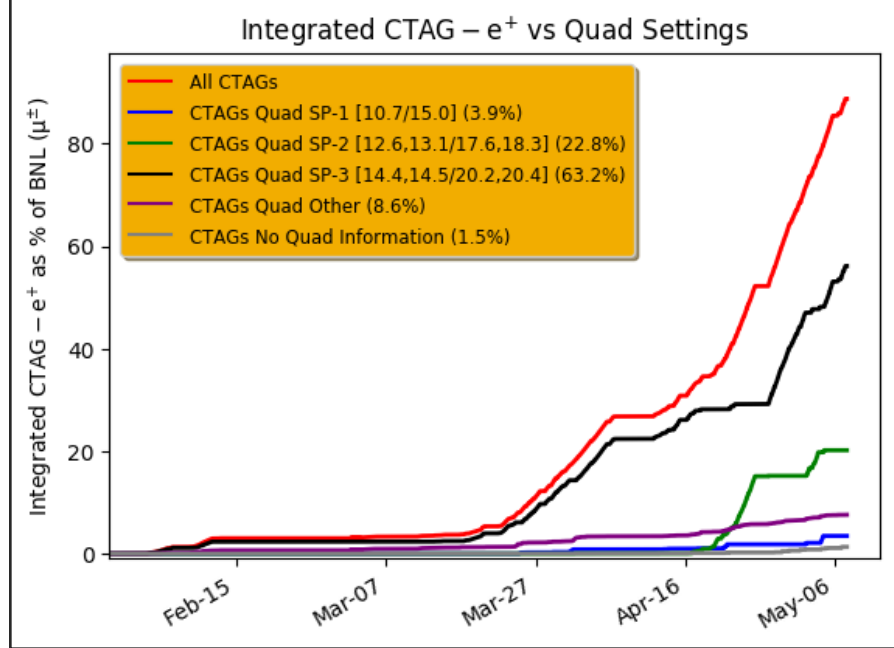
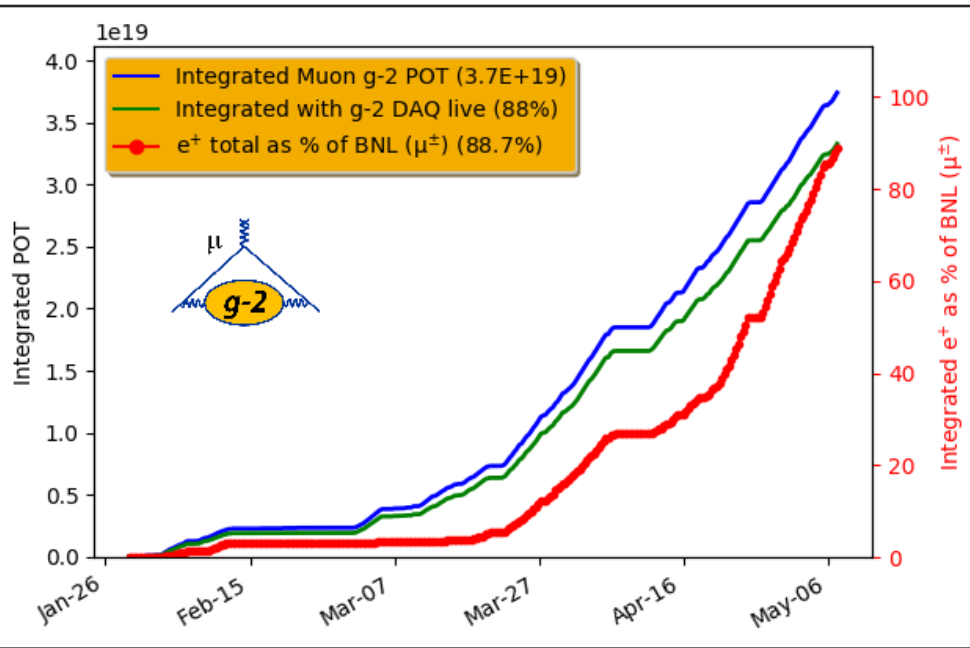


## Trend Plots Ring

- SRV up for a while now
- Kickers down: 6 hours Sun AM + trolley runs and magnet off period
- Quads ran happily at high setpoint. Off during trolley/magnet off times

Quad Up Time [Current >= 5.0, Voltage >= 15.0kV]





# Performance

- Quads mostly high setpoint (2 mediocre shifts)
- ~6 days running
- ~0.89 x BNL since 3/21 (0.23x BNL since last AEM)
- 88% POT weighted livetime
- Our best integrated week and best  $e^+$  shift

