



# NOvA experiment report

**Cindy Joe**

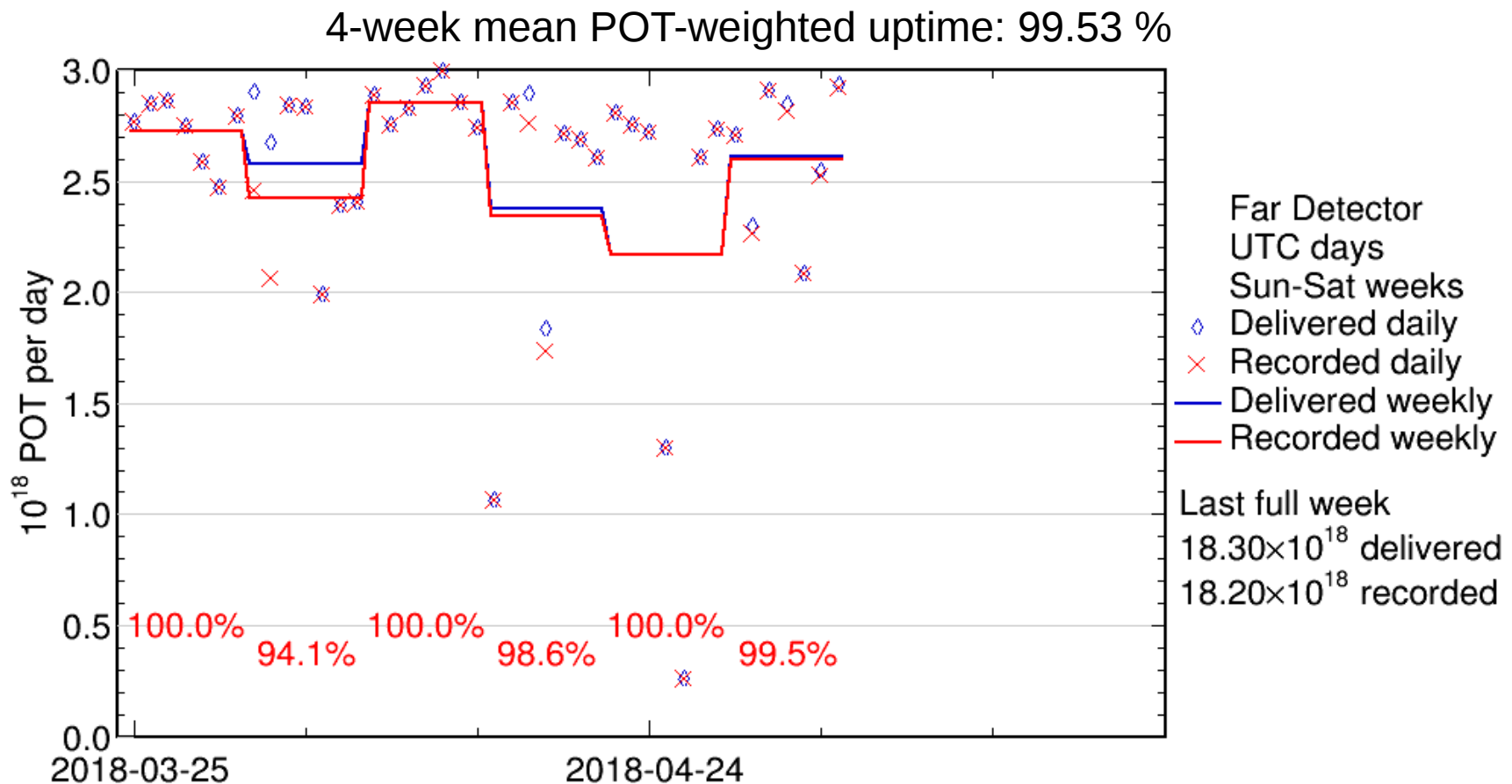
Fermilab

7 May 2018

# Summary

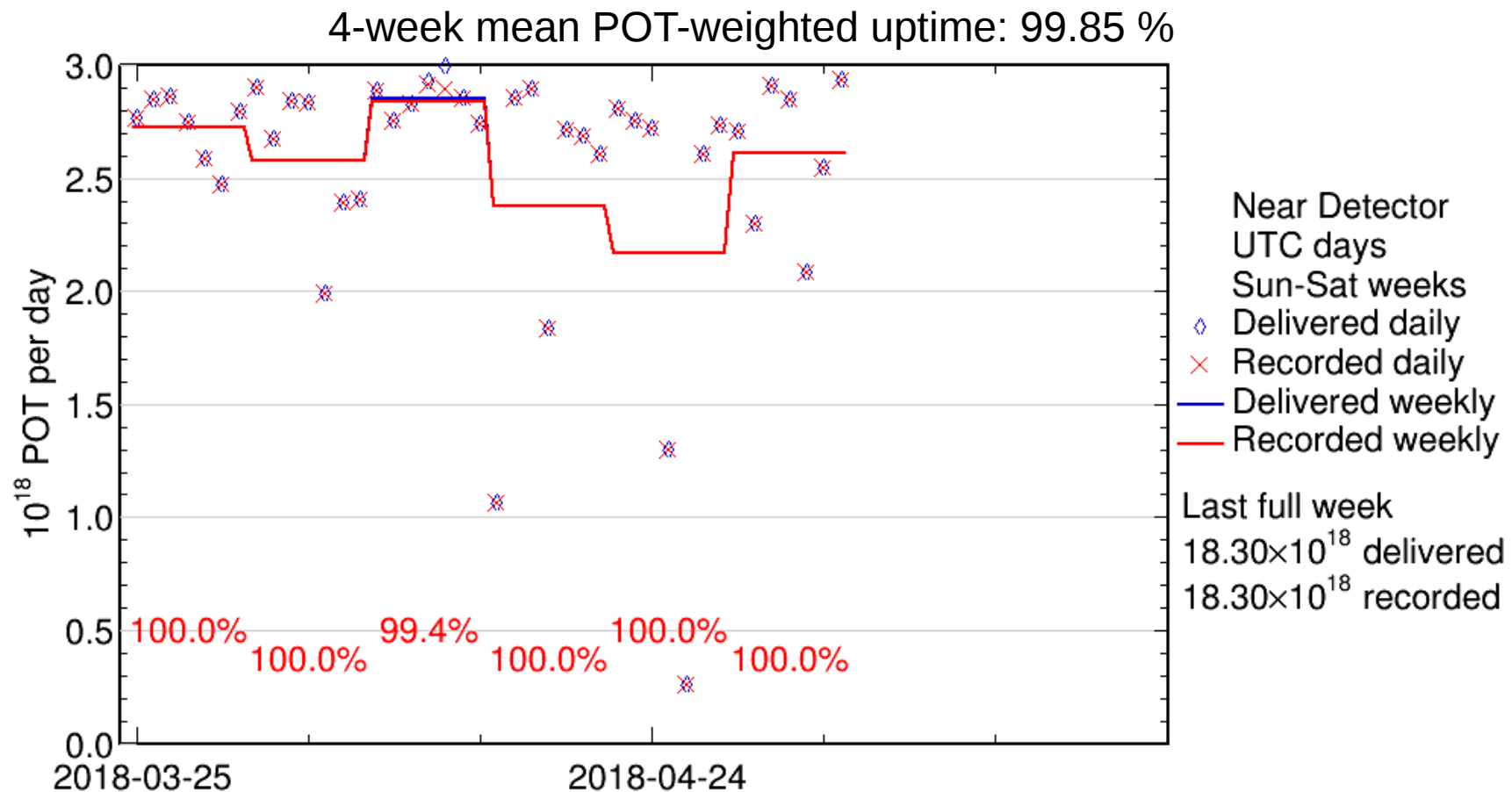
- Bi-annual maintenance at Ash River on Monday and Tuesday, including:
  - Inspection of the CRU1 chiller that cools the Ash River Computing Center
    - Used temperature monitoring and loadshed tools while chiller was down to avoid triggering the under-voltage trip breaker
    - ~2 hours FarDet downtime → largely overlapping with an unplanned beam downtime, so minimal loss of POT
  - Visual inspection of chillers #1 and #2, with no impact on data taking
- Otherwise stable running in both detectors

# FD summary

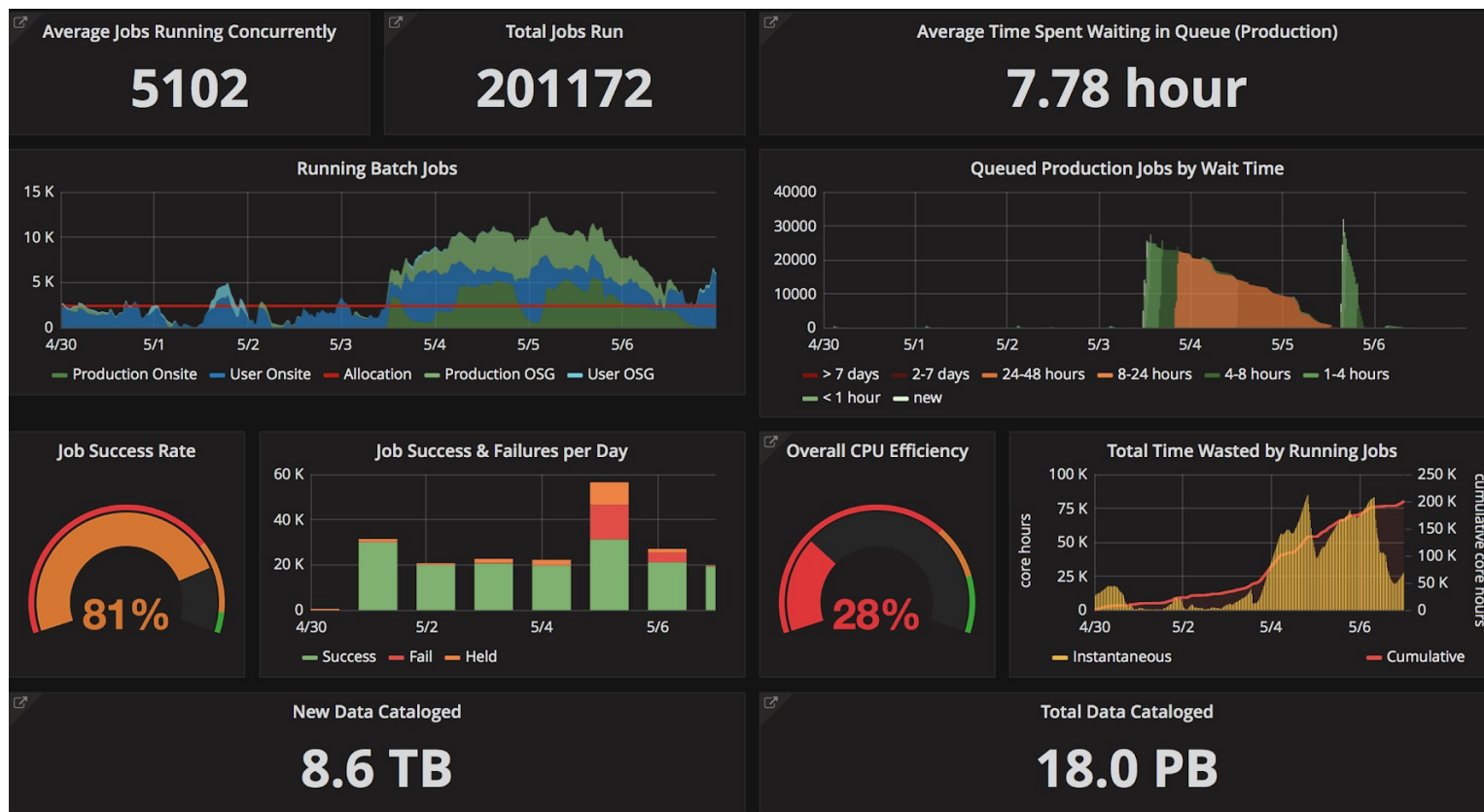


- FY18 POT:  $3.62 \times 10^{20}$  delivered |  $3.57 \times 10^{20}$  recorded
- Total neutrino mode POT recorded:  $11.46 \times 10^{20}$  ( $8.85 \times 10^{20}$  14 kt equiv.)
- Total antineutrino mode POT recorded:  $7.37 \times 10^{20}$

# ND summary



# Computing summary



- Final samples are being processed for upcoming summer conferences, with large push starting over the weekend.
- Inefficiency due to a particular processing chain where jobs run very quickly.
- Large number of held jobs on Saturday 5th due to a campaign requiring more memory than expected.