

8 7 6 5 4 3 2 1

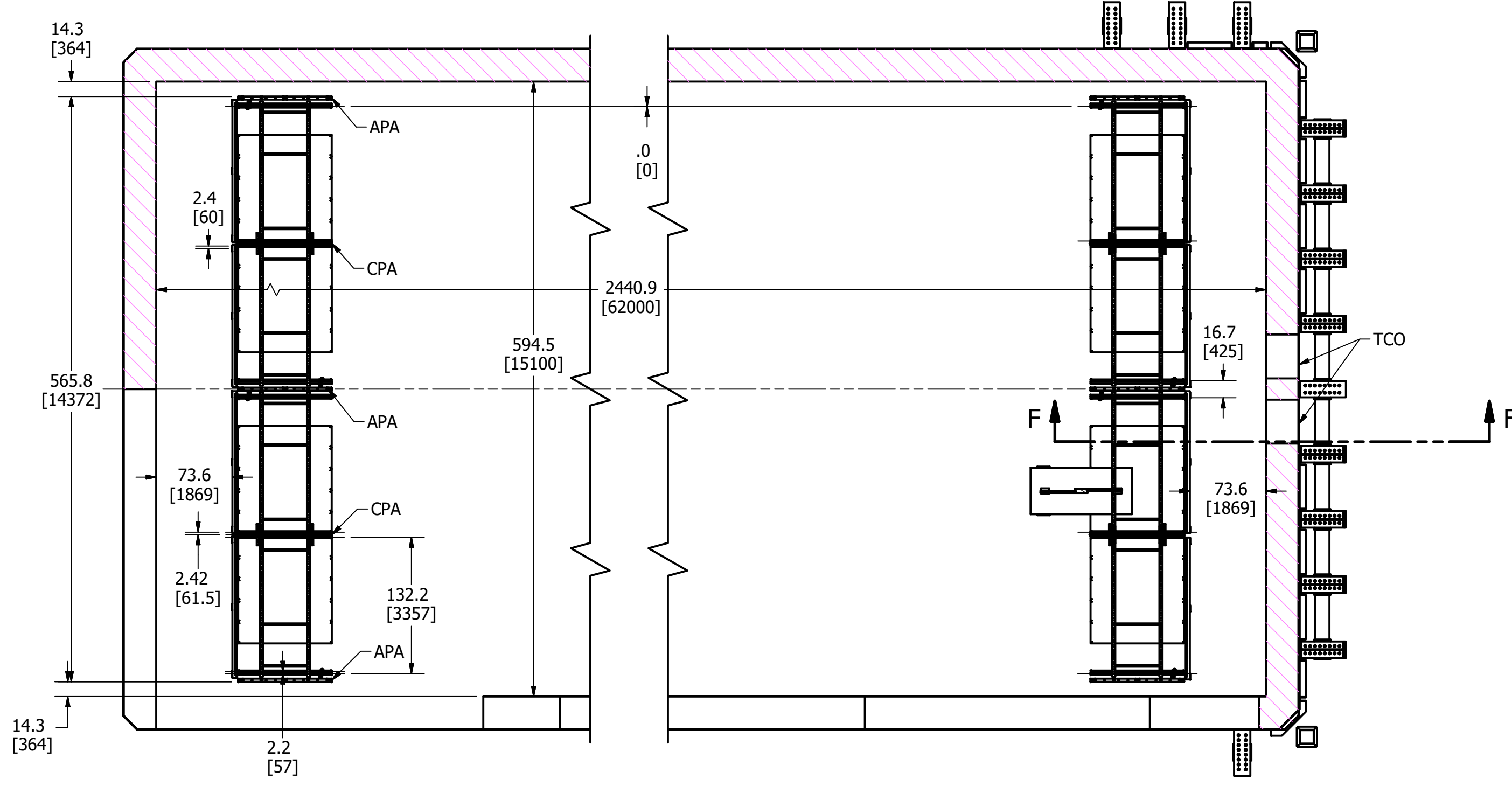
D

C

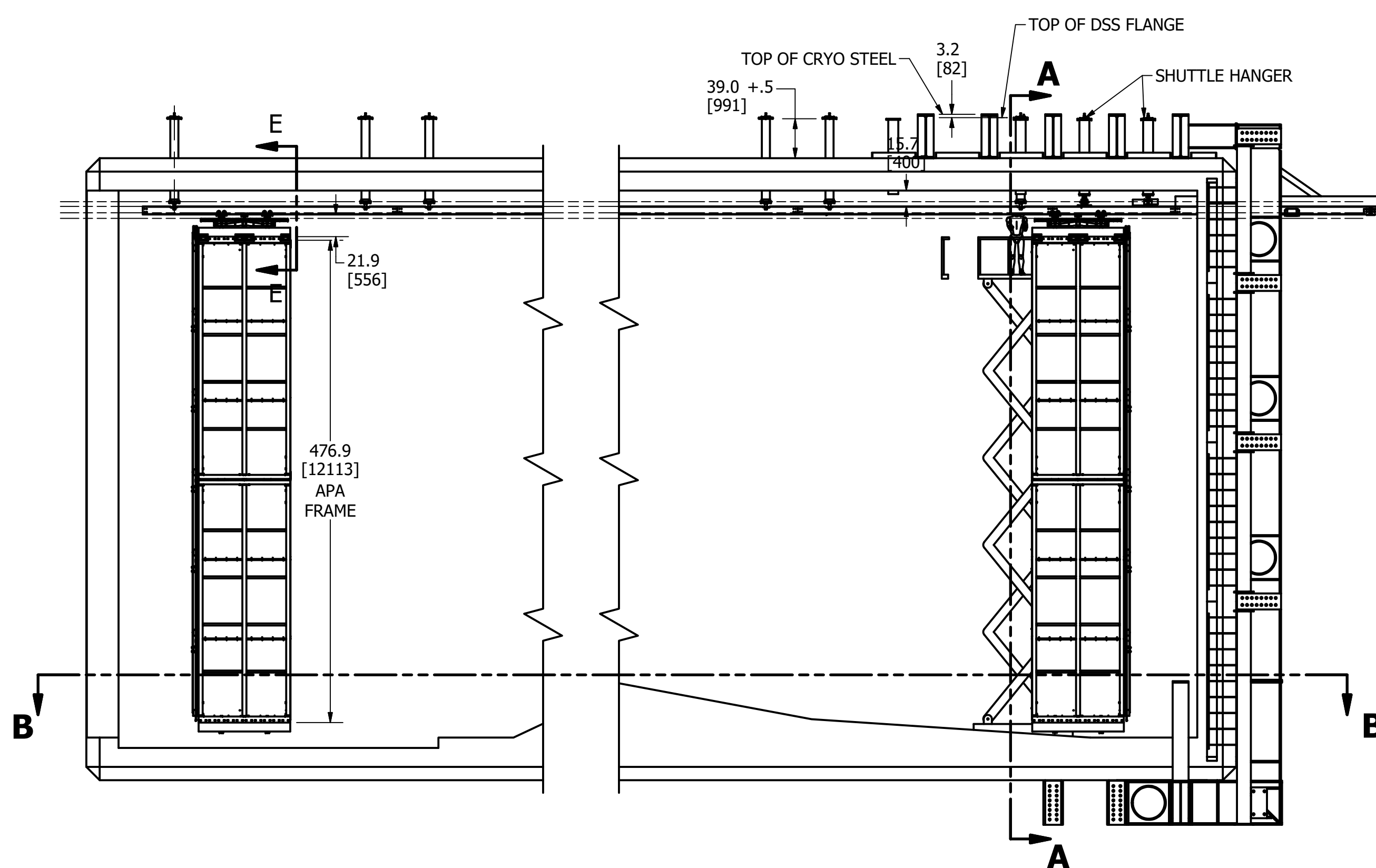
B

A

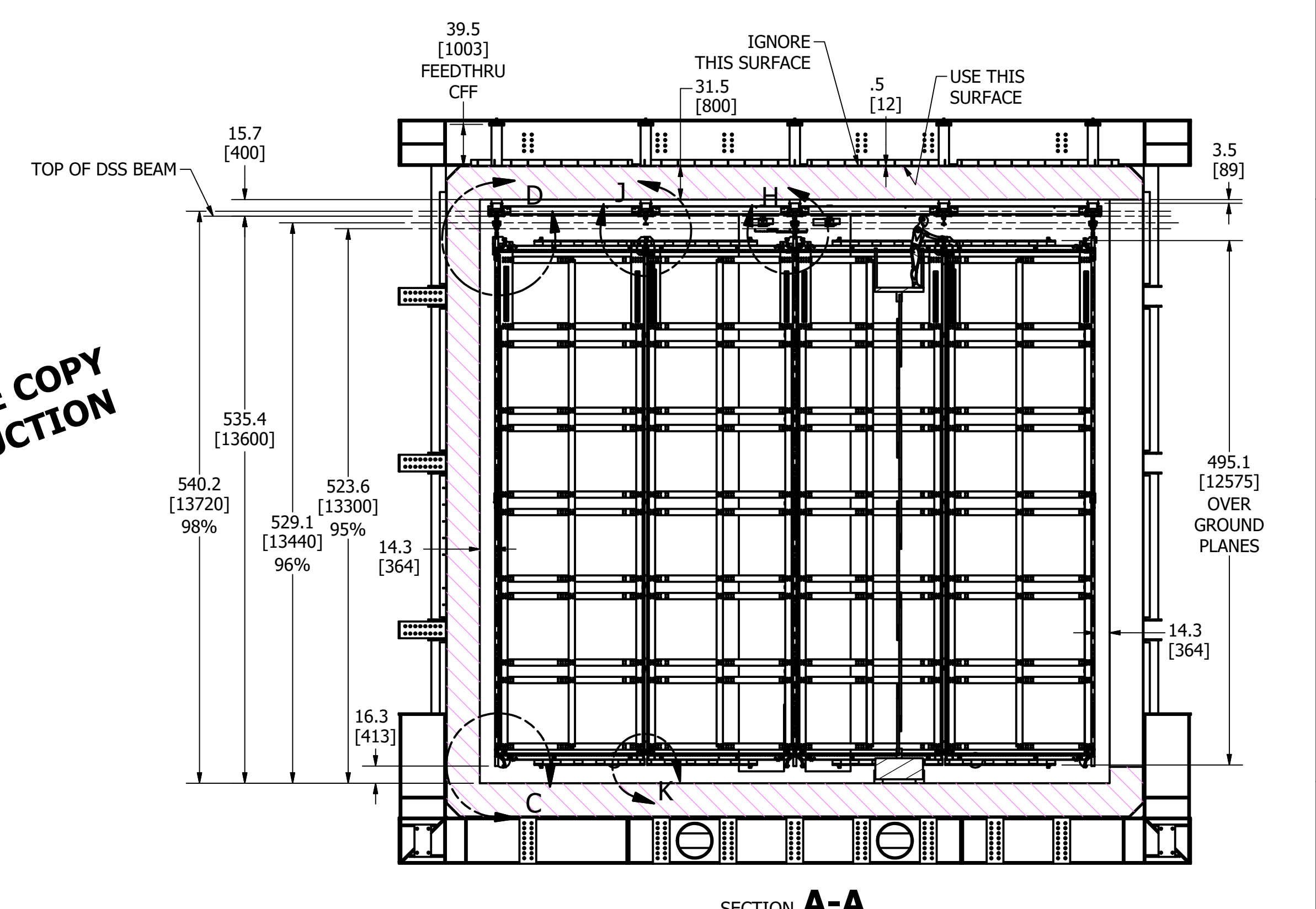
ITEM	QTY	PART NUMBER	PARTS LIST	DESCRIPTION
1	1	DFD-26-5xxx	TCO BRIDGE	
2	1	DFD-13-1000	APA-CPA-FC-EW MODULE	
3	1	DFD-26-1000	DSS SHUTTLE & HANGER SYSTEM, WEST CRYOSTAT	
4	1	Cryostat_112217_5000	CRYOSTAT ASSEMBLY Nov 22, 2017 -5000	
5	4	Tripod_Winch	Place Holder Tripod_Winch	
6	2	DFD-DSS_Work_Platform	DSS Installation Platform	
7	1	DFD-DSS_Work_Platform_2	DSS Installation Platform	
9	3	3473T211	WIRE ROPE LIFT FITTING; Ø1/4" PLUG-LOCK	
10	2	Wire_Rope_25	Wire Rope Ø25	
11	2	Human Robot	Corpo Humano em Escala	
12	1	GS-4047	GENIE LIFT, 39 FT	



SECTION B-B



**BID / REFERENCE COPY
NOT FOR PRODUCTION**
MAY 28, 2018



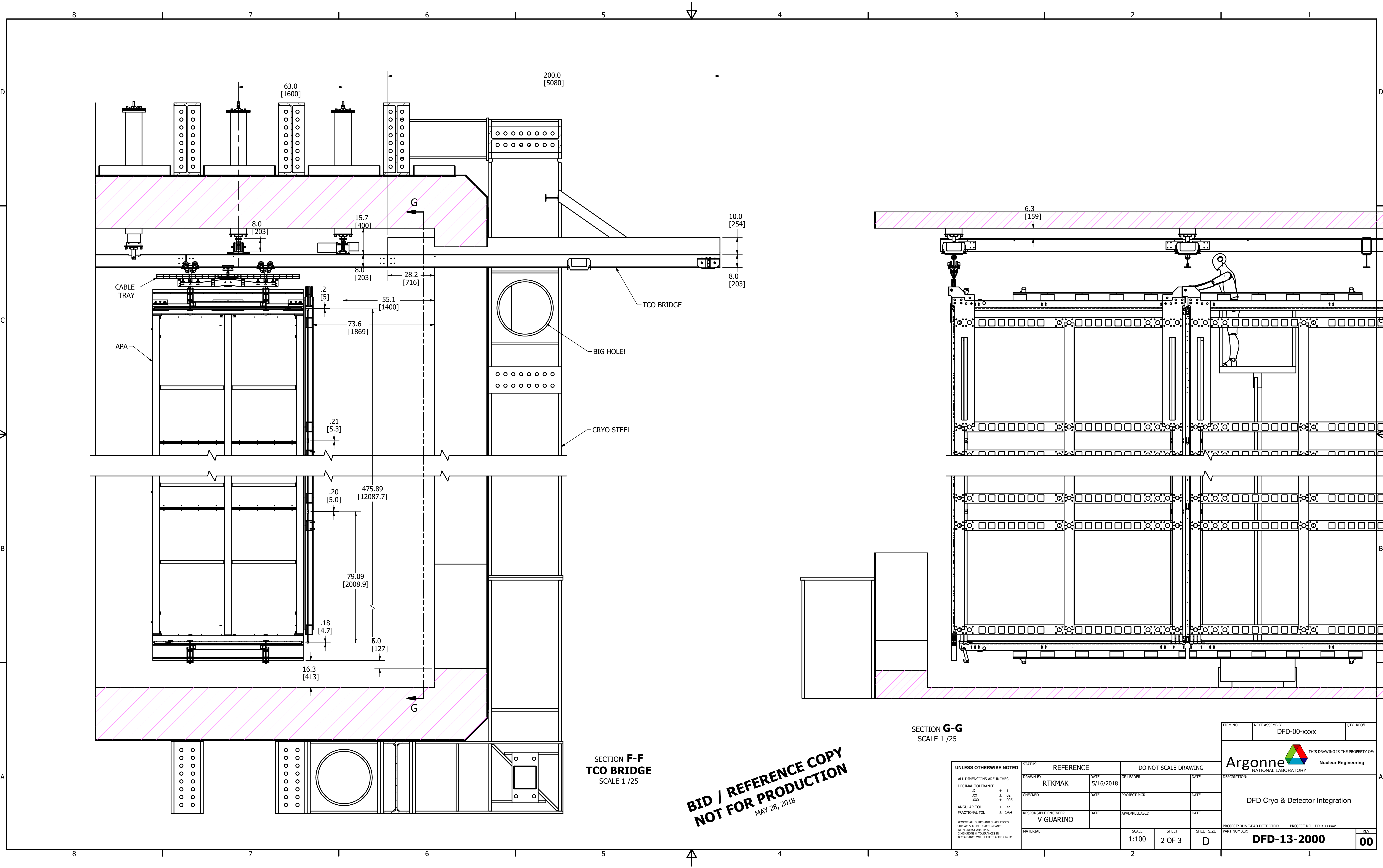
SECTION A-A

SEE SHEETS 2 & 3 FOR DETAILED VIEWS

UNLESS OTHERWISE NOTED ALL DIMENSIONS ARE INCHES DECIMAL TOLERANCE .X ± .1 .XX ± .02 .XXX ± .005 ANGULAR TOL ± 1/2° FRACTIONAL TOL ± 1/64 REMOVE ALL BURRS AND SHARP EDGES SURFACES TO BE IN ACCORDANCE WITH LATEST ANSI B96.1 DIMENSIONS & TOLERANCES IN ACCORDANCE WITH LATEST ASME Y14.5M	STATUS: REFERENCE	DO NOT SCALE DRAWING		
	DRAWN BY: RTKMAK	DATE: 5/16/2018	GP LEADER: DATE:	
	CHECKED: DATE:	PROJECT MGR: DATE:	RESPONSIBLE ENGINEER: V GUARINO	DATE: APVD/RELEASED: DATE:
	MATERIAL:	SCALE: 1:100	SHEET: 1 OF 3	SHEET SIZE: D

ITEM NO.	NEXT ASSEMBLY: DFD-00-xxxx	QTY. REQ'D.
THIS DRAWING IS THE PROPERTY OF: Argonne Nuclear Engineering		
DESCRIPTION: DFD Cryo & Detector Integration		
PROJECT: DUNE-FAR DETECTOR	PROJECT NO: PRJ1003942	REV: 00
PART NUMBER: DFD-13-2000		

8 7 6 5 4 3 2 1



SECTION F-F
TCO BRIDGE
SCALE 1 / 25

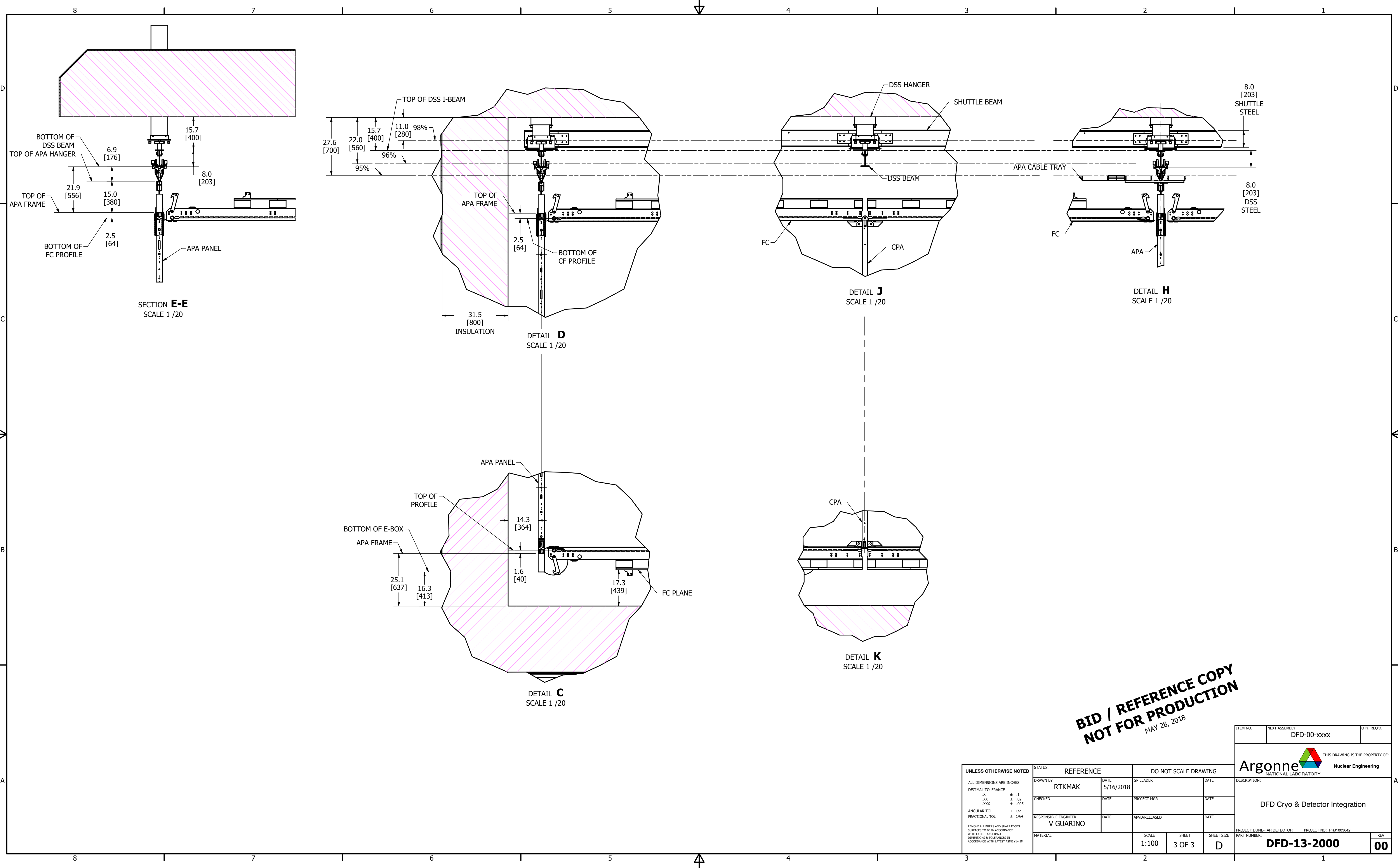
SECTION G-G
SCALE 1 / 25

BID / REFERENCE COPY
NOT FOR PRODUCTION
MAY 28, 2018

UNLESS OTHERWISE NOTED
ALL DIMENSIONS ARE INCHES
DECIMAL TOLERANCE
.X ± .1
.XX ± .02
.XXX ± .005
ANGULAR TOL ± 1/2°
FRACTIONAL TOL ± 1/64
REMOVE ALL BURRS AND SHARP EDGES
SURFACES TO BE IN ACCORDANCE
WITH LATEST ANSI B96.1
DIMENSIONS & TOLERANCES IN
ACCORDANCE WITH LATEST ASME Y14.5M

STATUS: REFERENCE		DO NOT SCALE DRAWING	
DRAWN BY RTKMAK	DATE 5/16/2018	GP LEADER	DATE
CHECKED	DATE	PROJECT MGR	DATE
RESPONSIBLE ENGINEER V GUARINO	DATE	APVD/RELEASED	DATE
MATERIAL	SCALE 1:100	SHEET 2 OF 3	SHEET SIZE D

ITEM NO.	NEXT ASSEMBLY DFD-00-xxxx	QTY. REQ'D.
 THIS DRAWING IS THE PROPERTY OF: Argonne Nuclear Engineering NATIONAL LABORATORY		
DESCRIPTION: DFD Cryo & Detector Integration		
PROJECT: DUNE-FAR DETECTOR	PROJECT NO: PRJ1003942	REV
PART NUMBER: DFD-13-2000		00



**BID / REFERENCE COPY
NOT FOR PRODUCTION**
MAY 28, 2018

UNLESS OTHERWISE NOTED
ALL DIMENSIONS ARE IN INCHES
DECIMAL TOLERANCE
.X ± .1
.XX ± .02
.XXX ± .005
ANGULAR TOL ± 1/2°
FRACTIONAL TOL ± 1/64
REMOVE ALL BURRS AND SHARP EDGES
SURFACES TO BE IN ACCORDANCE
WITH LATEST ANSI B96.1
DIMENSIONS & TOLERANCES IN
ACCORDANCE WITH ASME Y14.5M

STATUS: REFERENCE		DO NOT SCALE DRAWING	
DRAWN BY RTKMAK	DATE 5/16/2018	GP LEADER	DATE
CHECKED	DATE	PROJECT MGR	DATE
RESPONSIBLE ENGINEER V GUARINO	DATE	APVD/RELEASED	DATE
MATERIAL	SCALE 1:100	SHEET 3 OF 3	SHEET SIZE D

ITEM NO.	NEXT ASSEMBLY DFD-00-xxxx	QTY. REQ'D.
 Argonne Nuclear Engineering <small>NATIONAL LABORATORY</small>		
THIS DRAWING IS THE PROPERTY OF:		
DFD Cryo & Detector Integration		
PROJECT: DUNE-FAR DETECTOR	PROJECT NO: PRJ1003942	REV
PART NUMBER:	DFD-13-2000	00