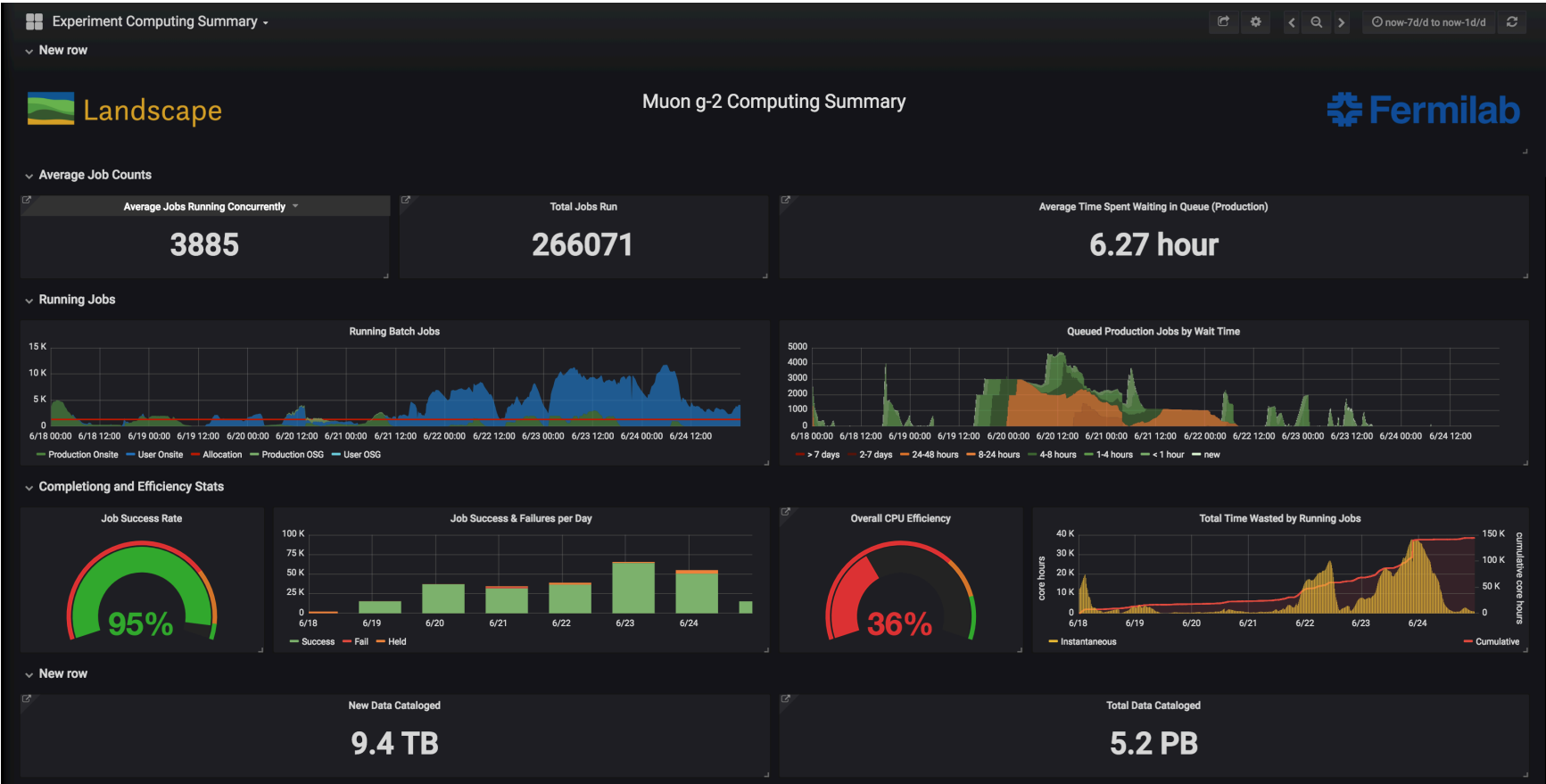


Muon $g-2$ AEM Update

Brendan Kiburg, Jarek Kaspar

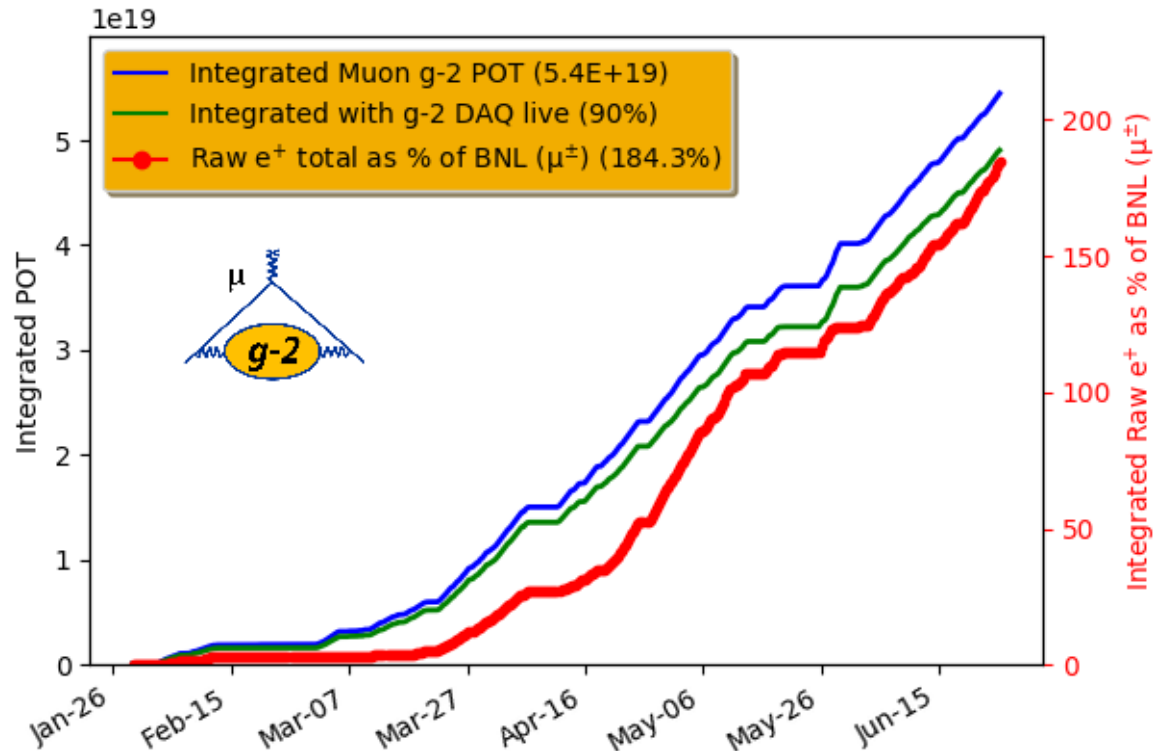
June 25, 2018

Computing



- Recent runs failed due to an incorrect *art* laser in-fill filter
 - Modified online collection mode to address an issue. Analysis not flagged.

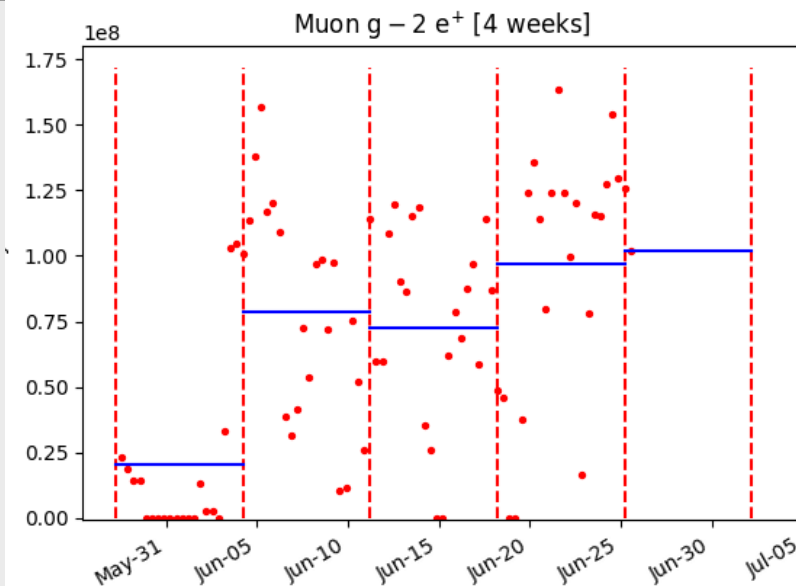
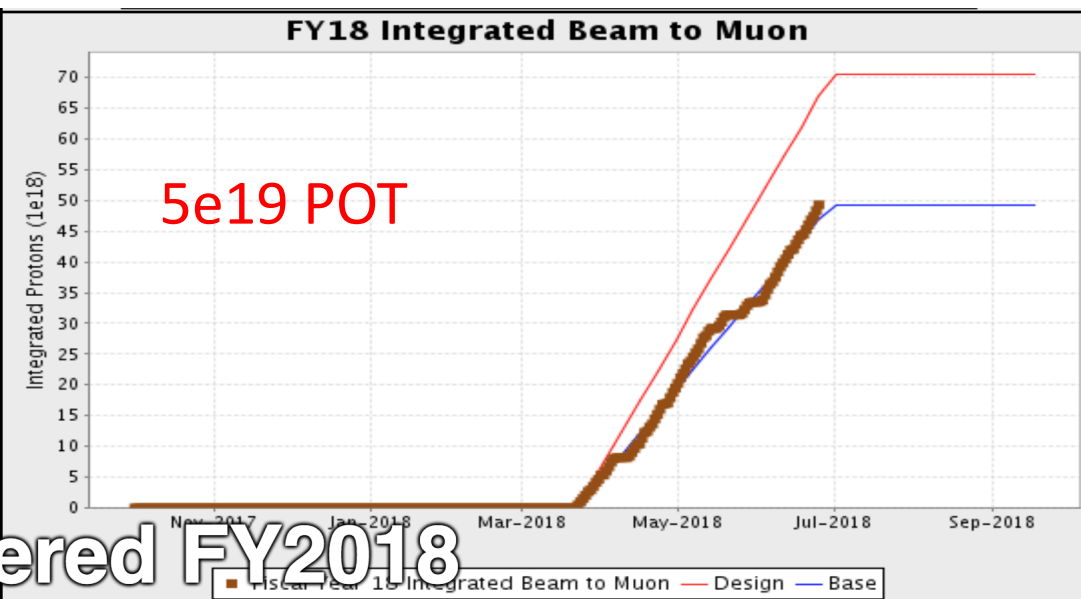
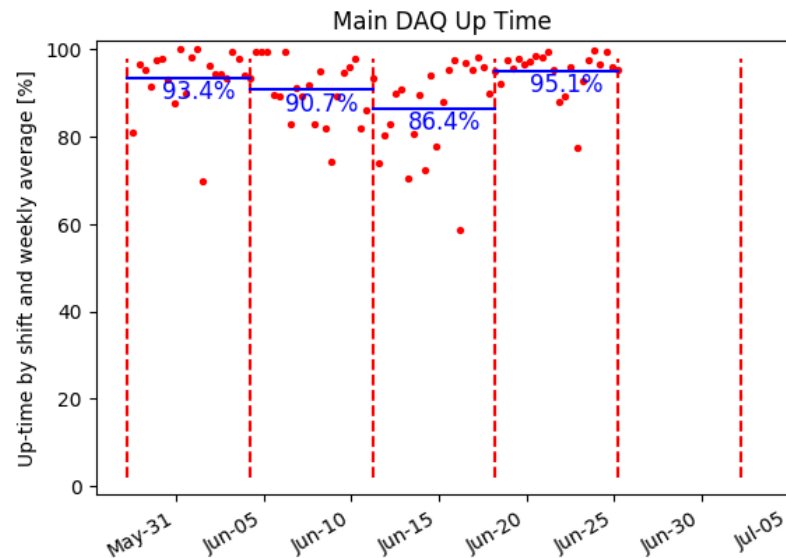
Mostly Stable, 0.22xBNL added since last AEM



- Stable Running
- A couple of shifts on systematics
 - Quad timing study, Kicker timing study, beam momentum study

Summary

- A few more shifts systematics (Tue-Thu), coordinated with AD
- Kicker strength studies
- Next week, more statistics/ 2nd round of systematics → transition to absolute calibration



erred FY2018