



# **NOvA Experiment Report**

## **Update on NOvA Operations**

---

Reddy Pratap Gandrajula

Michigan State University

AEM Meeting

Monday, July 2<sup>nd</sup>, 2018

# Computing Summary:



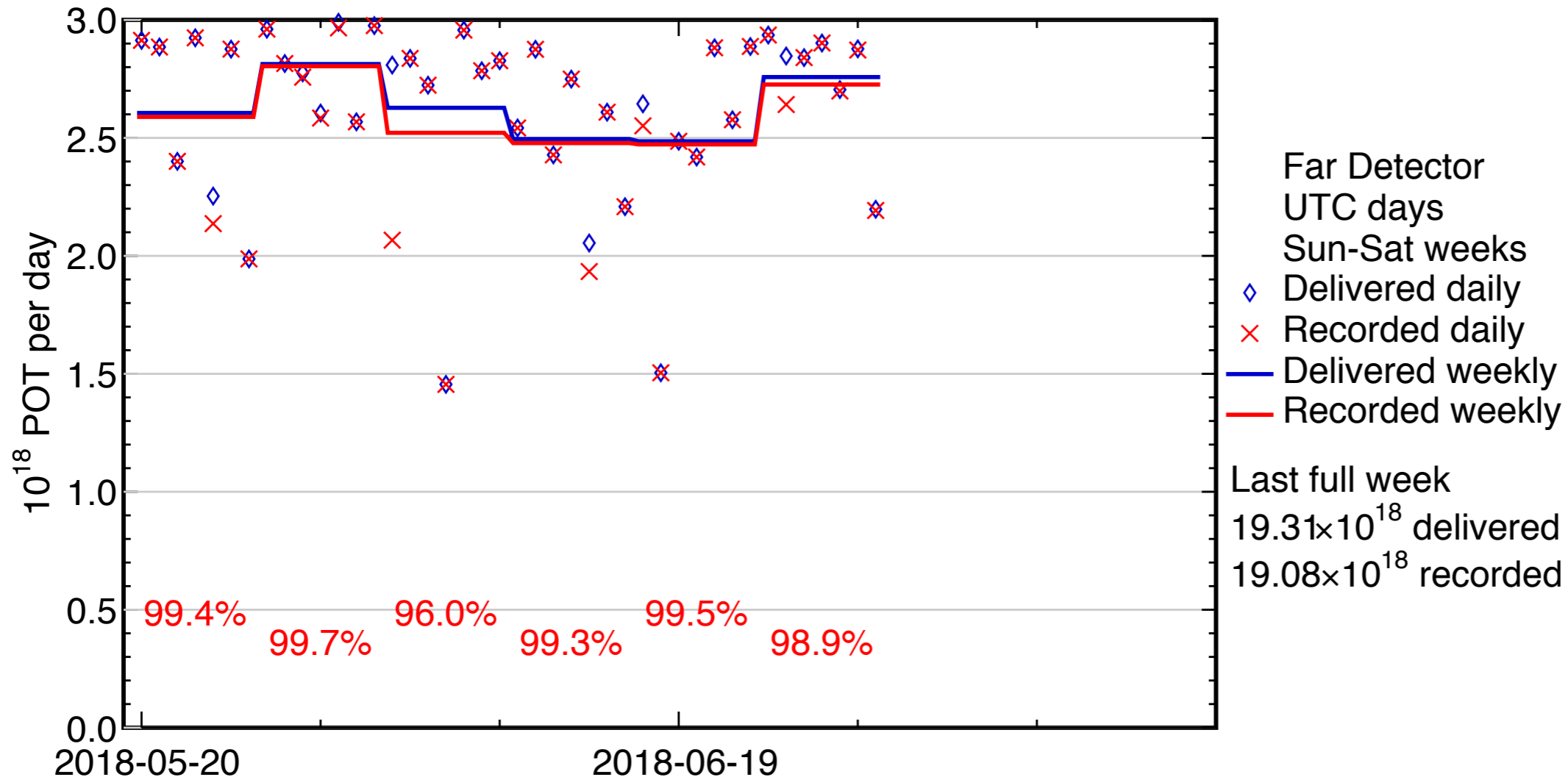
- The majority of the failed jobs this past week came from a production pass where 15k jobs were submitted on ~60k files, but all files were processed in the first 5k jobs, so the remaining 10k jobs failed since there were no files remaining to process.

# Summary of operations:

- One Far Detector downtime occurred due to a DAQ problem, which we have seen before, resulting in a minor downtime, a total **FD downtime of ~1 hour 40 minutes.**
- Near Detector was running well, with no downtimes.
- A fire alarm system inspection on 06/19 at Ash River found the linear heat detection was malfunctioning, which won't set off the sprinkler system. The AR team has been manning the building 24/7 , and knows how to operate the system manually in case of an alarm. A replacement part has been purchased from Europe and is expected to arrive at AR in 4 - 6 weeks.
- Summer shutdown starts in this week on July 7th, and we are prepared to make key updates in DAQ, DDT and Testbeam programs as we move into shutdown period.

# FD Summary:

Four-week mean POT-weighted uptime: 98.4%



Last full week  
 $19.31 \times 10^{18}$  delivered  
 $19.08 \times 10^{18}$  recorded

- FY2018 POT:  **$5.51 \times 10^{20}$**  delivered,  **$5.44 \times 10^{20}$**  recorded
- Total nu mode POT recorded:  **$11.46 \times 10^{20}$  ( $8.85 \times 10^{20}$  14 kt equiv.)**
- Total anti-nu mode POT recorded:  **$9.24 \times 10^{20}$**

# ND Summary:

Four-week mean POT-weighted uptime: 99.9 %

