



NOvA Experiment Report

Update on NOvA Operations

Reddy Pratap Gandrajula

Michigan State University

AEM Meeting

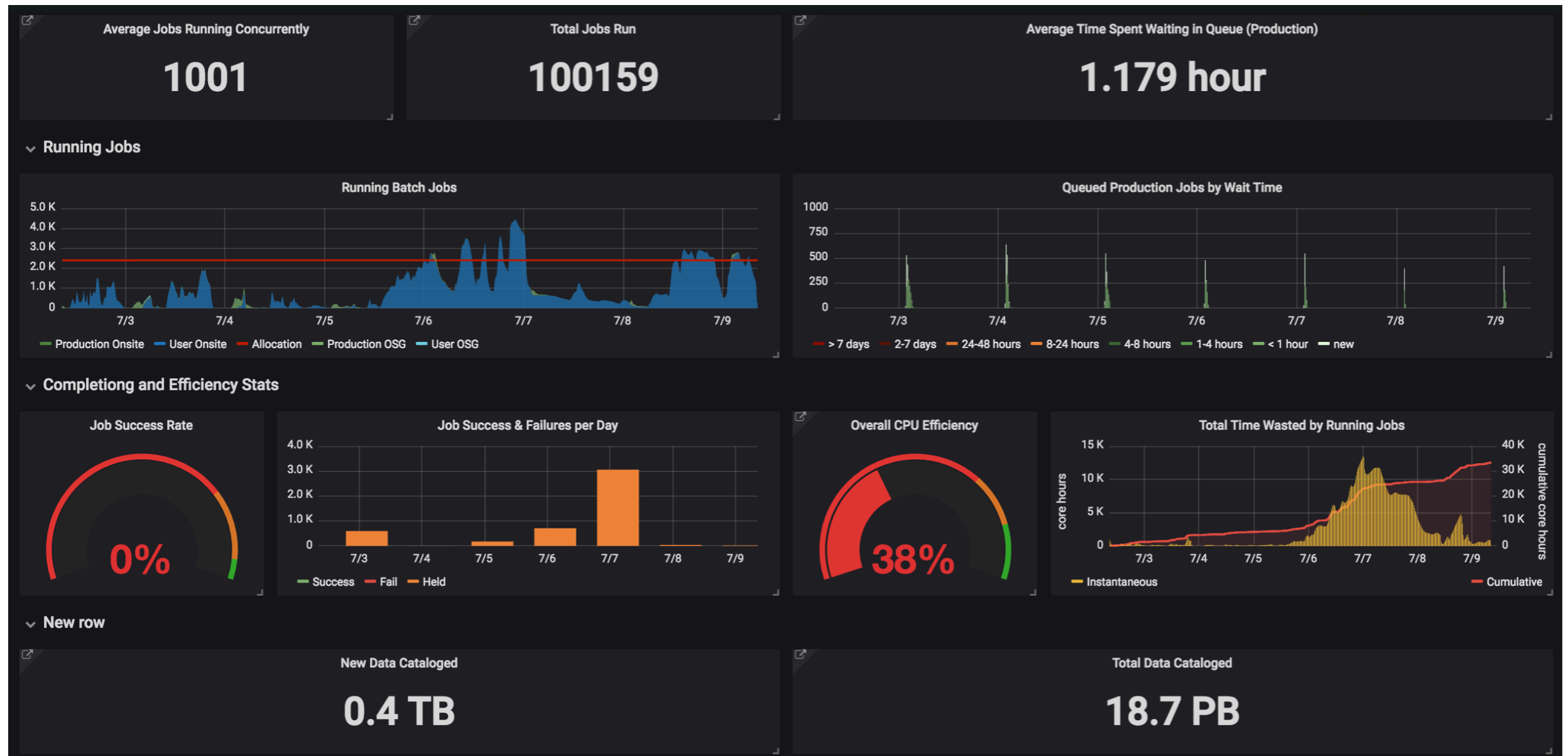
Monday, July 9th, 2018

Summary of operations:

- One Far Detector downtime occurred due to a DAQ problem, which we have seen before, resulting in a minor downtime, a total **FD downtime of ~ 50 minutes with beam on.**
- Severe weather conditions at Ash River caused a power bump, and several DAQ nodes were down, needed restarting manually, thanks to Ash River crew for recovering the machines, a total **FD downtime of ~ 3 hours 50 minutes, when beam was off.**
- Near Detector experienced 4 downtimes due to known DAQ problems, needed timing chain scrub in one occasion, resulting in a minor downtime, **a total ND downtime of ~ 1 hour 15 minutes with beam on, and ~2 hours ND downtime with beam off.**
- Ash River team has been staffing the FD building 24/7 due to a part malfunctioning in the sprinkler system, and knows how to operate the system manually in case of an alarm. A replacement part has been purchased from Europe and is expected to arrive at Ash River on August 6th.
- Summer shutdown: DAQ, DDT and Test Beam programs updates are underway.

Thanks to Ash River Crew

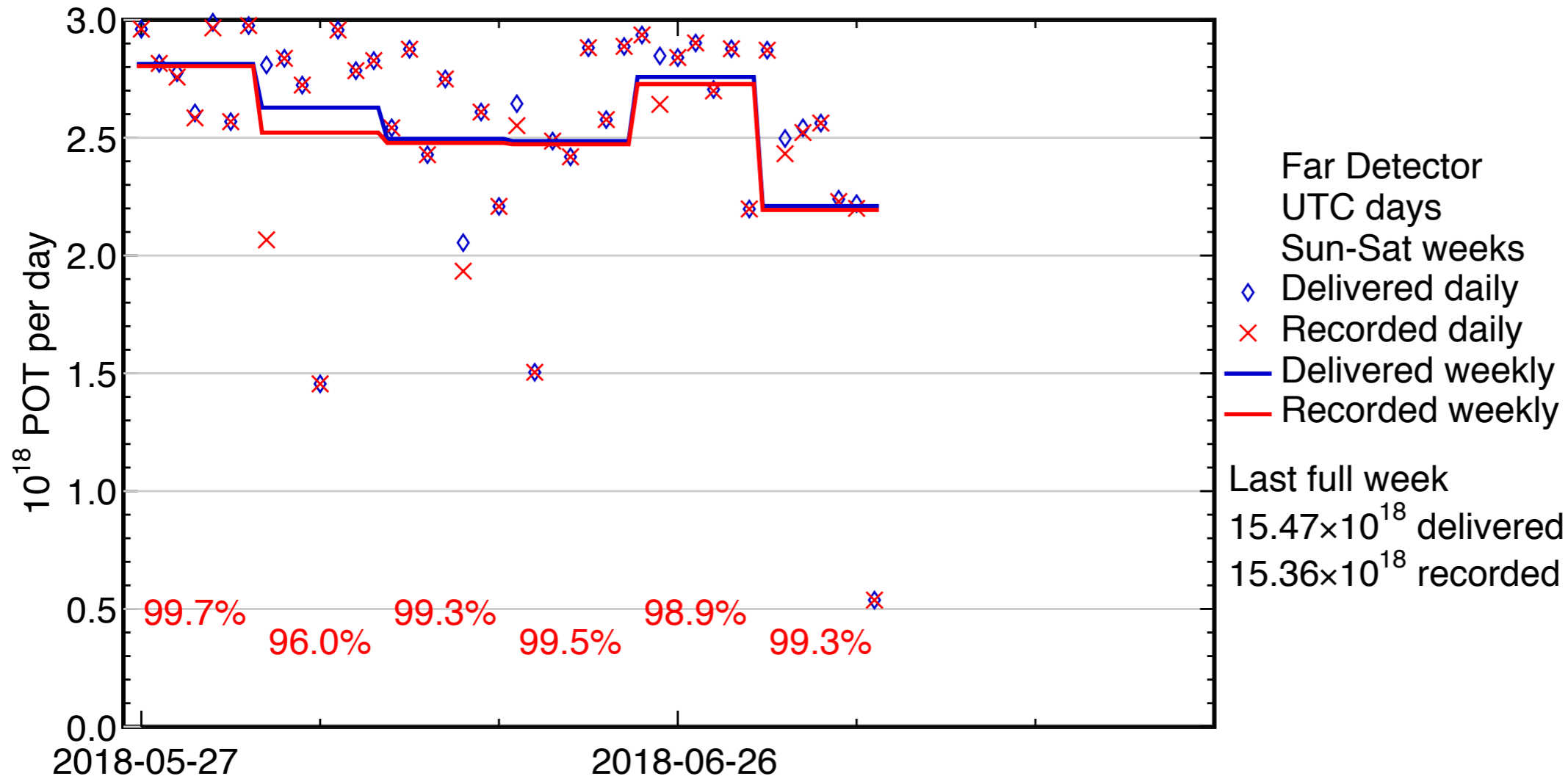
Computing Summary:



There is an issue with the computing summary, the reported job success rate for the week is zero, which is seemingly inconsistent with the non-zero efficiency, the production conveners and experts traced the failures are due to the FTS updates that were made around July 3 and further investigations are underway.

FD Summary:

Four-week mean POT-weighted uptime: 99.3%



- FY2018 POT: **5.64×10^{20}** delivered, **5.56×10^{20}** recorded (**Best year for NuMI to-date!**)

- Total nu mode POT recorded: **11.46×10^{20}** (**8.85×10^{20} 14 kt equiv.**)

- Total anti-nu mode POT recorded: **9.36×10^{20}**

ND Summary:

Four-week mean POT-weighted uptime: 99.8 %

