

DE LA RECHERCHE À L'INDUSTRIE

cea



Cryomodule Tooling

C. MADEC

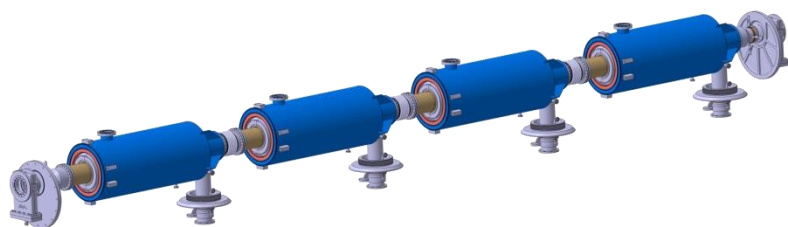
September 4th, 2018

International Workshop on Cryomodule Design and Standardization

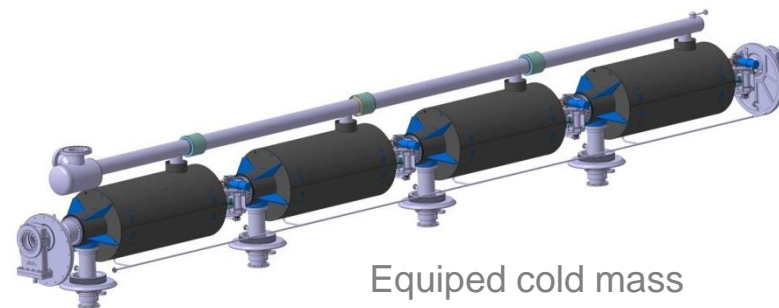
- Steps for the tooling development
- Specific environment : Clean room, alignment, welding ...
- Mock-ups and evolution
- Off-the-shelf tooling
 - Vacuum groups, welding equipment, RF test stands
- QA/QC

Steps for tooling development : Define steps and conditions

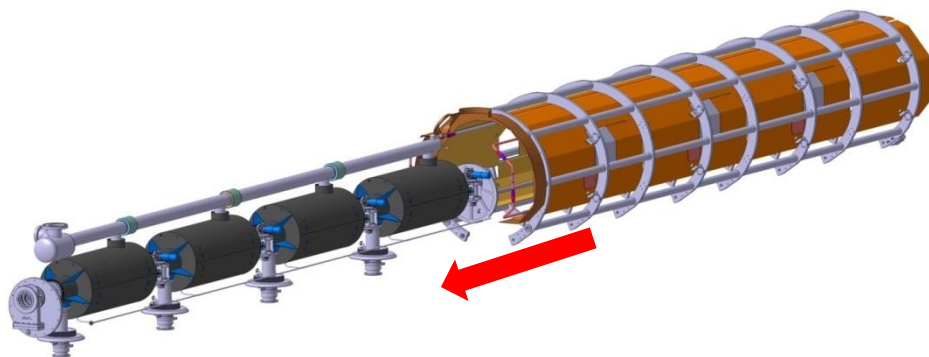
From the 3D model of the cryomodules, the assembly is broken down in steps separating the assembly conditions (clean room / halls, mechanical/RF/vacuum)



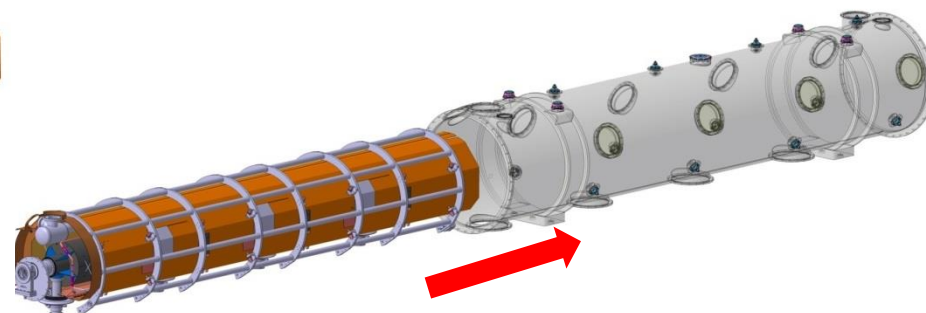
Cavity string to be assembled in clean room



Equipped cold mass



Spaceframe and thermal shield

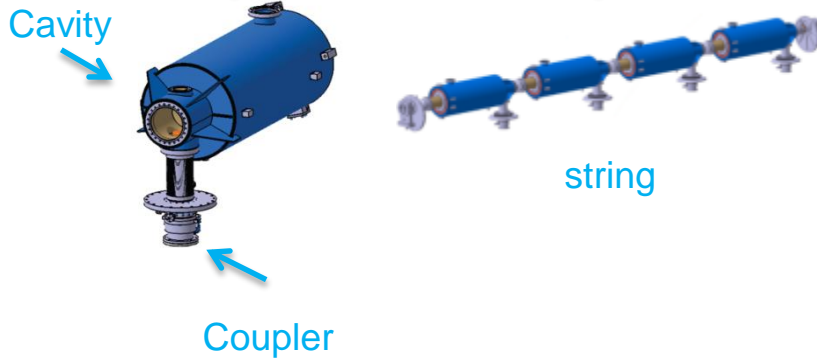
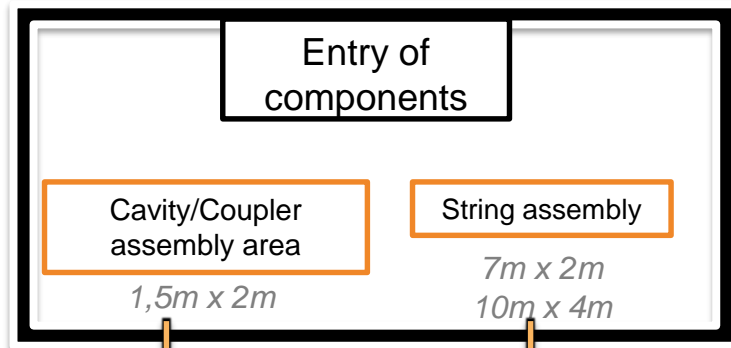


Space frame and vacuum vessel

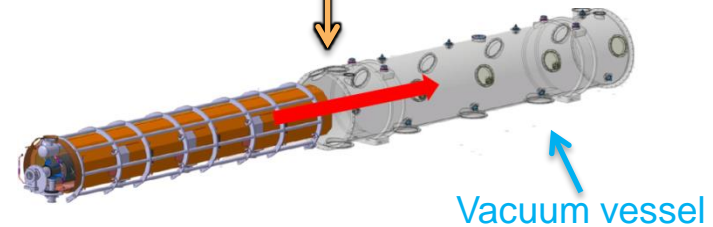
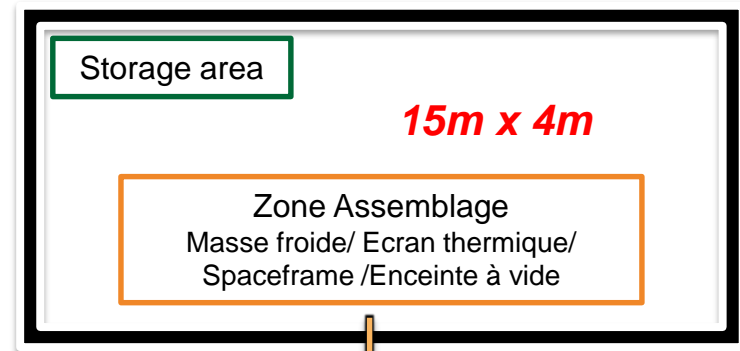
Infrastructures needed : Clean room and Halls

- Not only the room for the components but for the lifter, the tools table with wrench, N2 gun, particle counters ...the people to work around

Clean room



Assembly halls

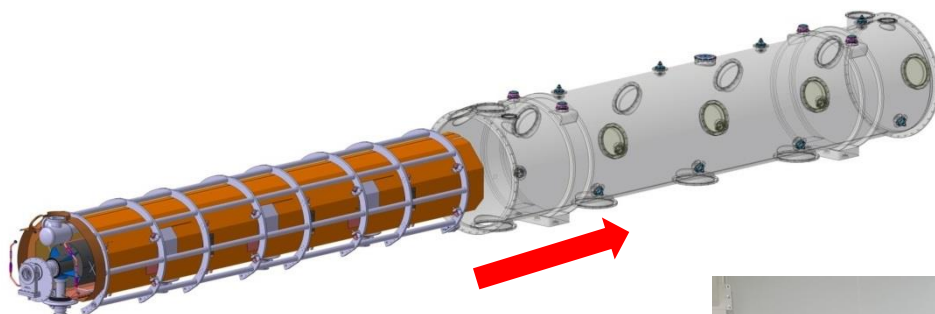


Ajouter les dimensions de la Both

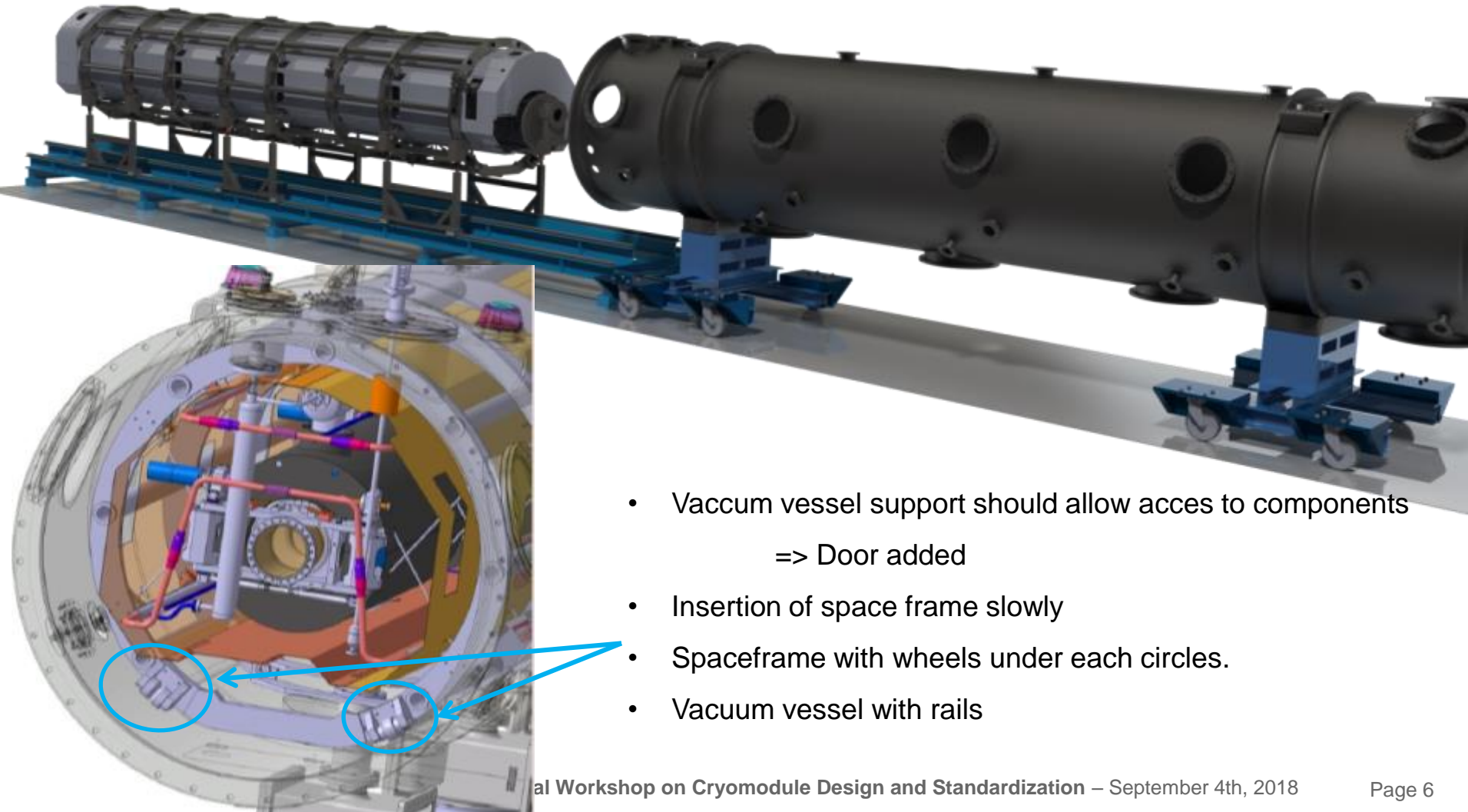
From the 3D model of the cryomodules, one describes :

- Parts to be assembled
- Functionality of the tool
- Legal/regulatory framework
- Environment (Clean room, halls)

Space frame and vacuum vessel
Roll the space frame in VV, maintain the alignment
none
halls

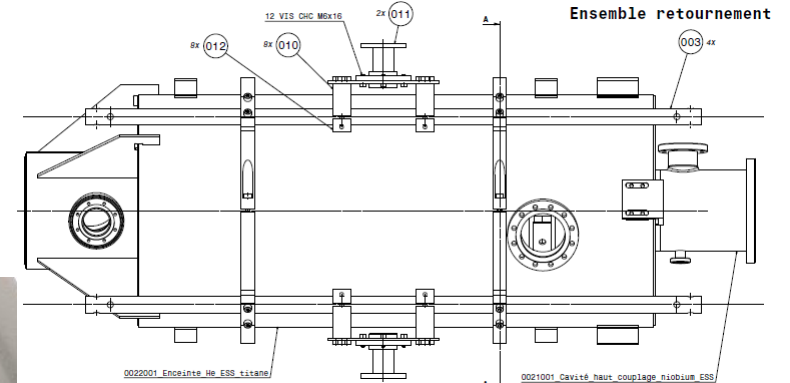


Start the tooling design when designing the components so that interfaces can be added on components



- Vacuum vessel support should allow access to components
=> Door added
- Insertion of space frame slowly
- Spaceframe with wheels under each circles.
- Vacuum vessel with rails

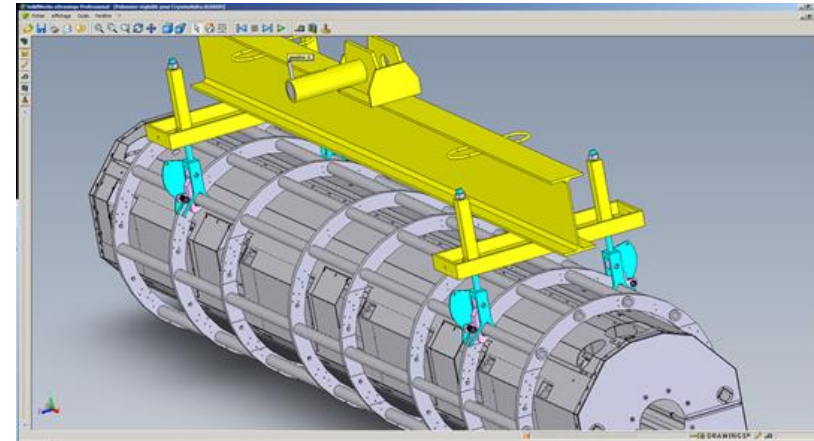
Example : welds thickness and position specified to be able to assemble the tooling



Lifting tools have to match the lifting regulatory framework

Welding to match the welding regulatory framework

For PIP2, framework has to be checked for the use in each country (SARAF project)



XFEL EXAMPLE : CHAQUE CRYOMODULE DOIT RÉPONDRE AUX RÈGLES DU PRESSURE EQUIPMENT DEVICE. LA PRESSION MAXIMALE EST DE 6 BARS. LES COMPOSANTS DE RÉSEAU HÉLIUM 2K DOIVENT POUVOIR CONTENIR CETTE PRESSION SANS RUPTURE.

CERTIFICATION NF EN ISO 10675-1 : 2013 - NIVEAU 1

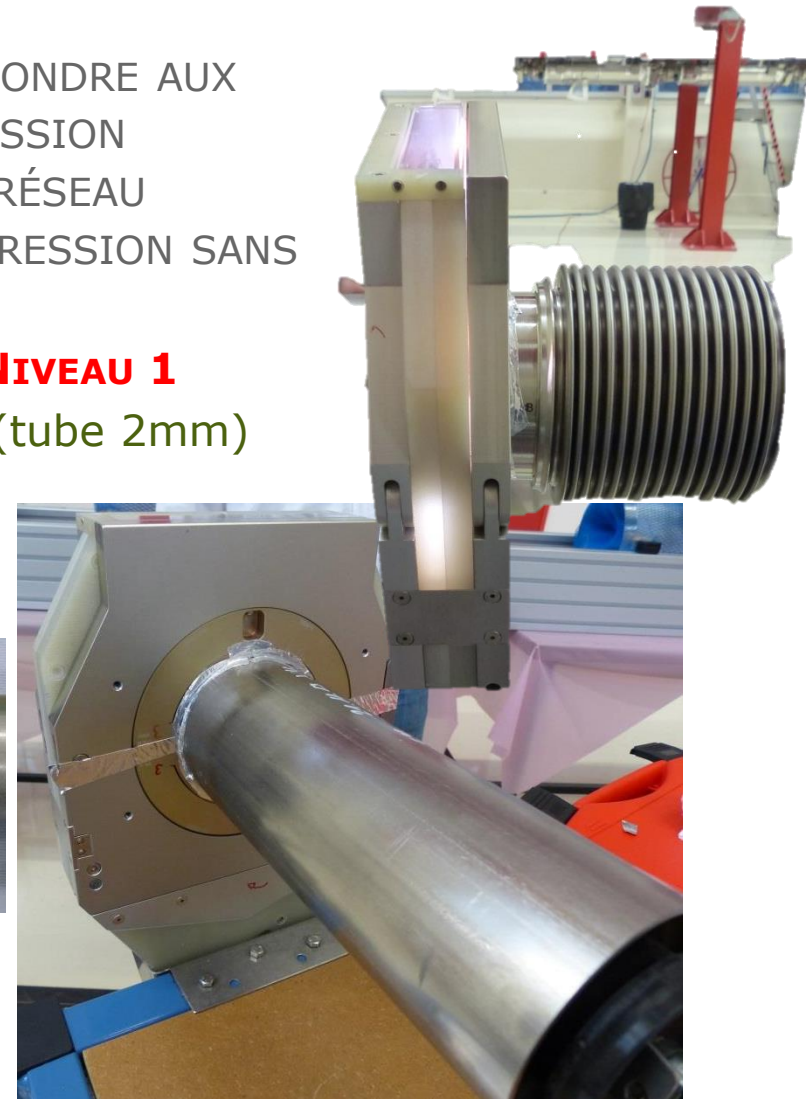
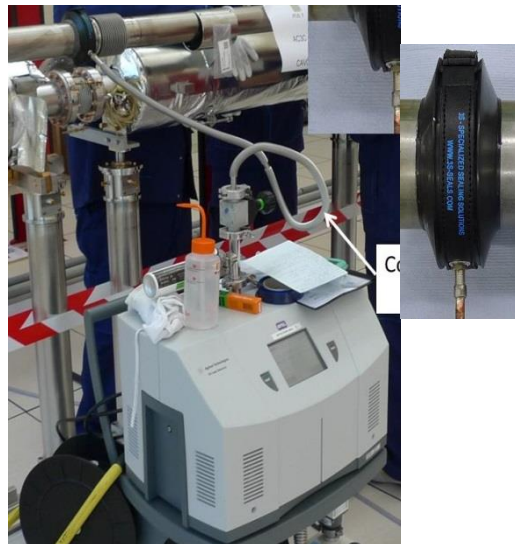
=> Soudure avec soufflures inférieures 0.4mm (tube 2mm)

Matériau : Inox et Titane

Soudure orbitale sur tube ou TIG manuelle

- TEST VISUEL
- RADIOGRAPHIE X
- TEST D'ÉTANCHÉITÉ
- RESSUAGE

CEA/DRF/IRFU/DACM



When designing the tooling, take into account the environment, for example clean room:

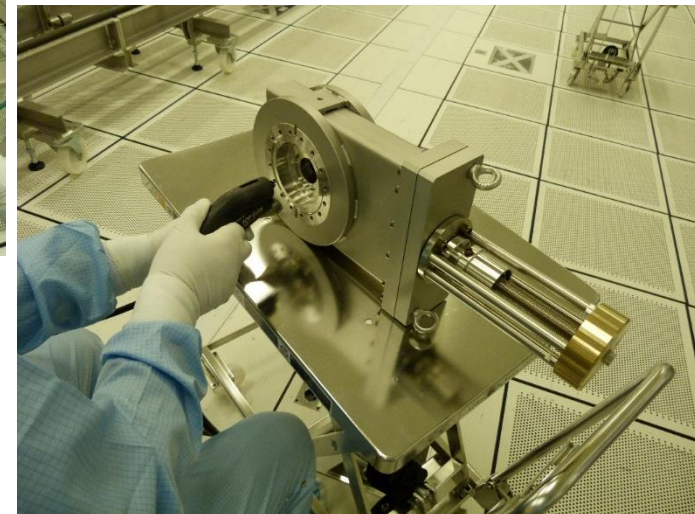
- No grease on the tooling
- Protection of already prepared sub assembly (no glued sensors or protected ones not to pollute the clean room)
- Local bags

TTC topical Workshop on SRF cryomodule clean room assembly :

<https://indico.in2p3.fr/event/10347/timetable/#all>



SPECIFIC ENVIRONMENT

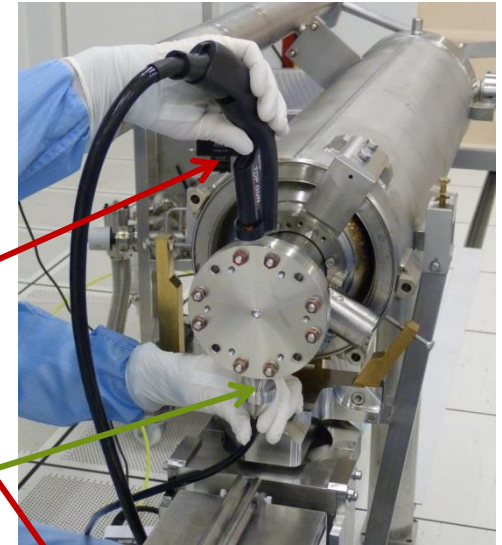




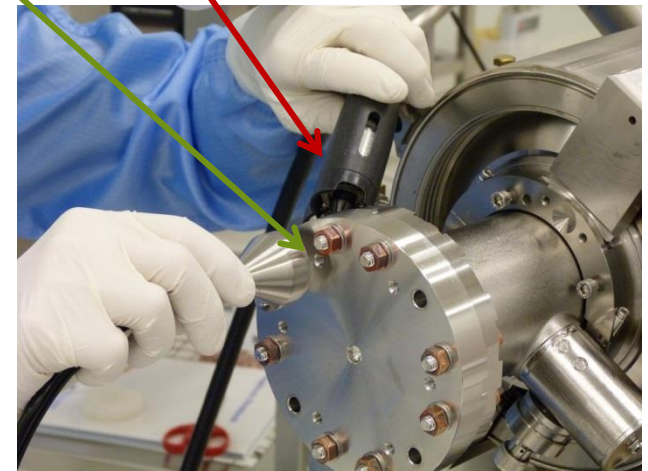
Cleaning

Blowing with Deionised N2

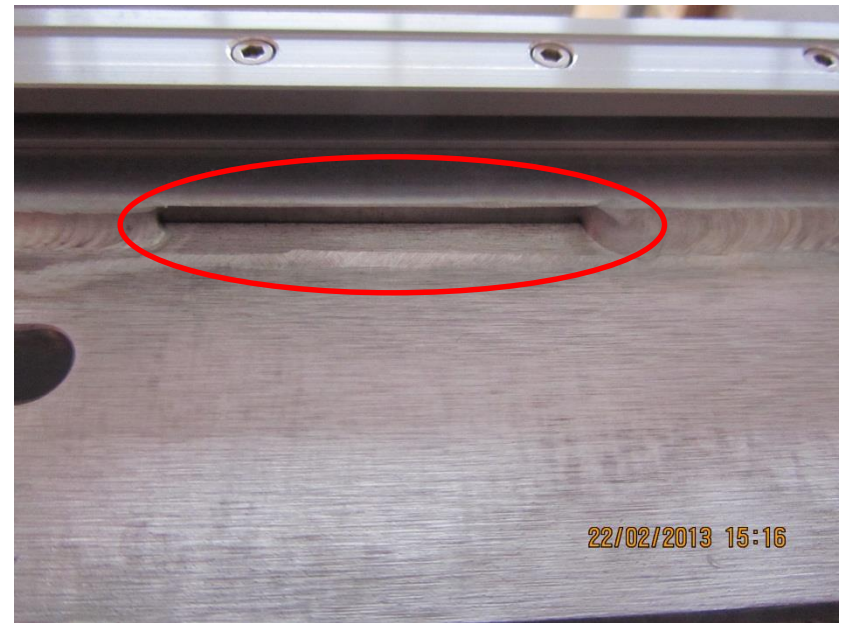
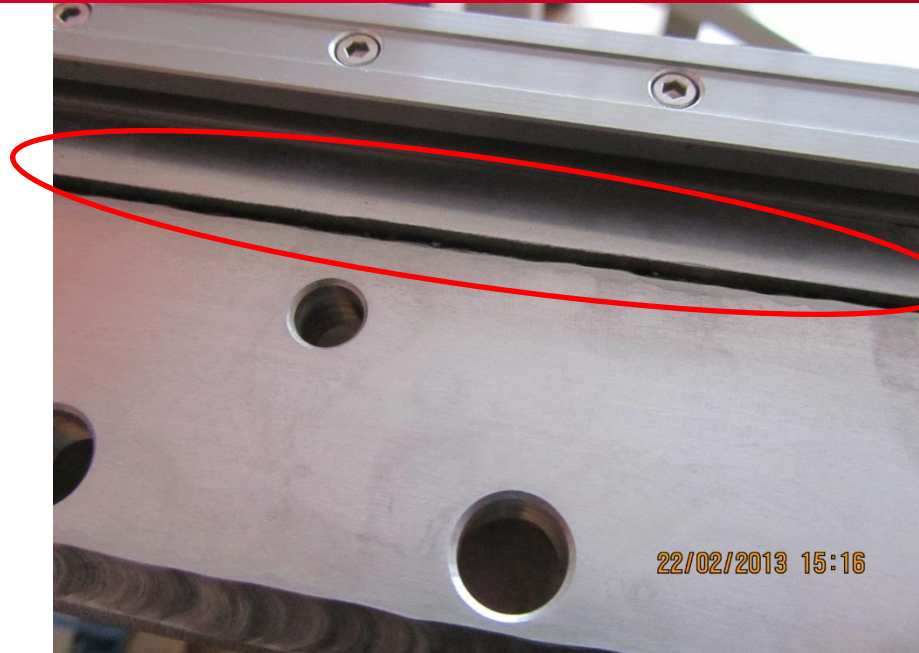
Particules counting



counted are below 10 parts ($>0,3 \mu\text{m}$) during 1 min



MAKE COMPONENTS OR TOOLS CLEANABLE



Circled areas are difficult to clean and could be dust traps



Weld all along

Courtesy of N. Bazin

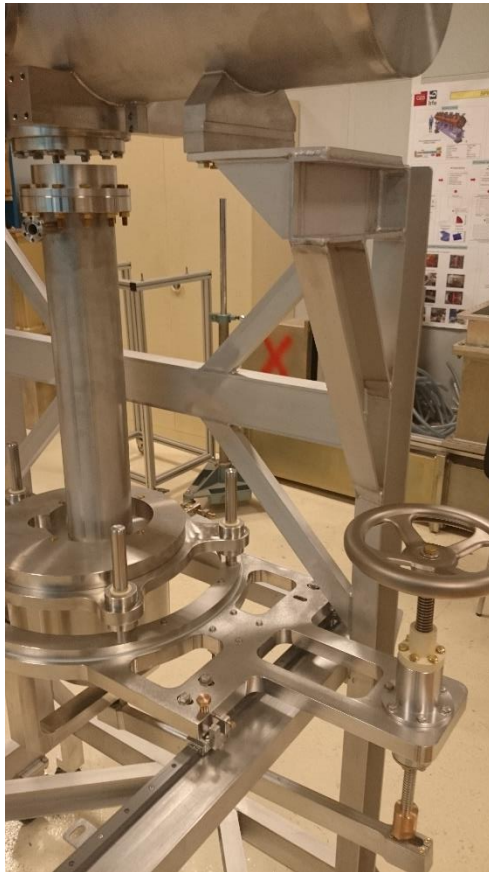


Avoid welding beads and burrs to prevent from tearing clean room tissues

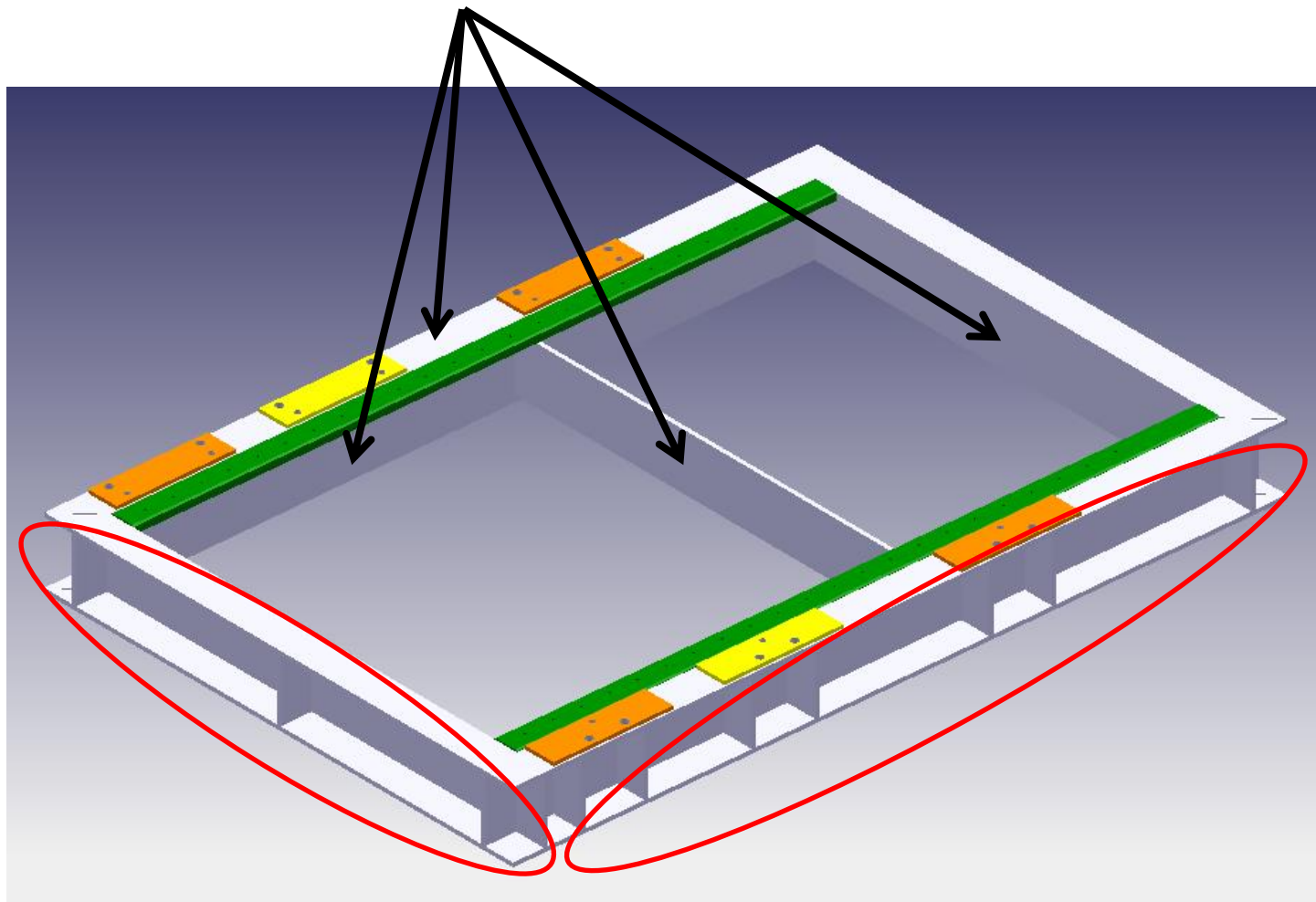
Courtesy of N. Bazin

Surface finish is important.

The cleaning is more difficult (and sometimes impossible) when the tooling was grinded as on the picture. It is better to leave with stainless steel aspects or paint the surface.



Surfacing of the areas done after manufacturing

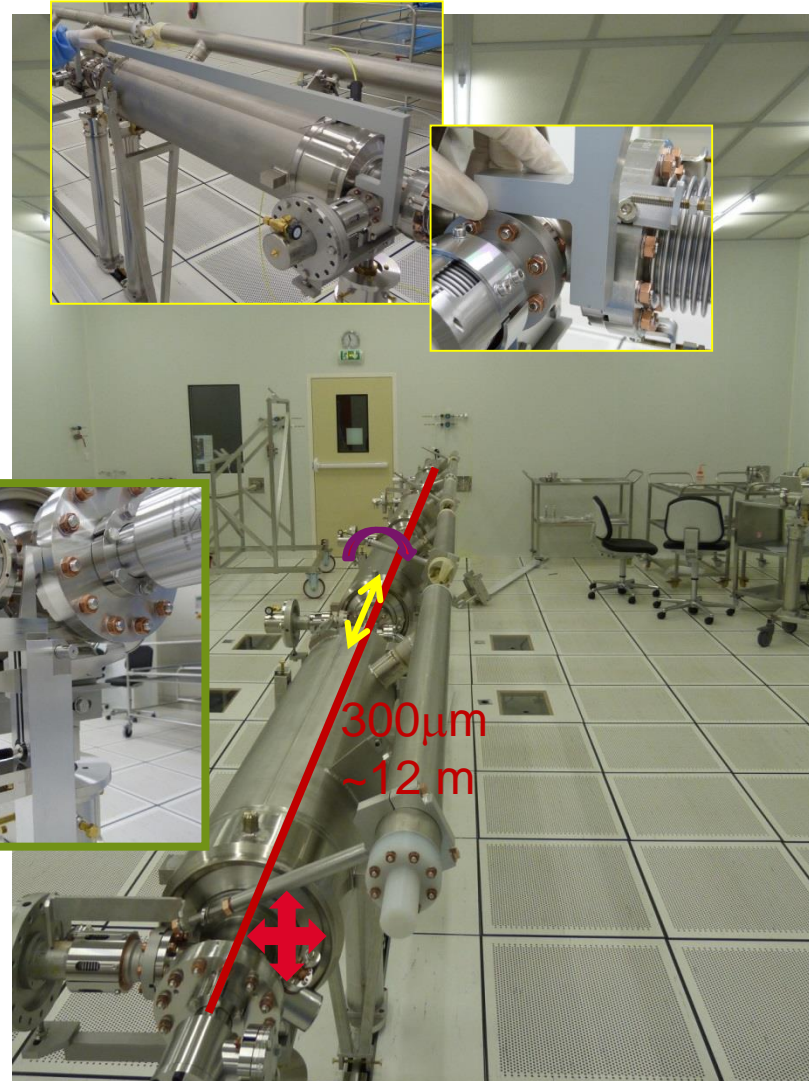
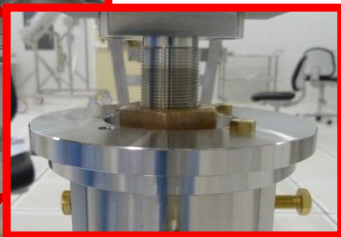
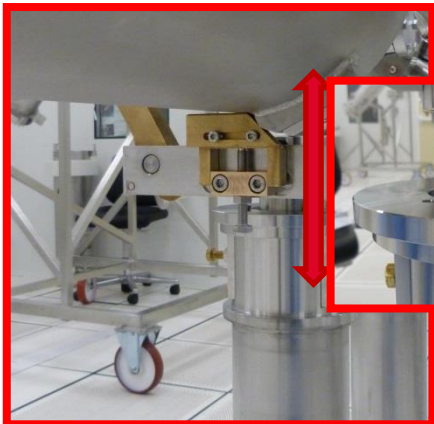


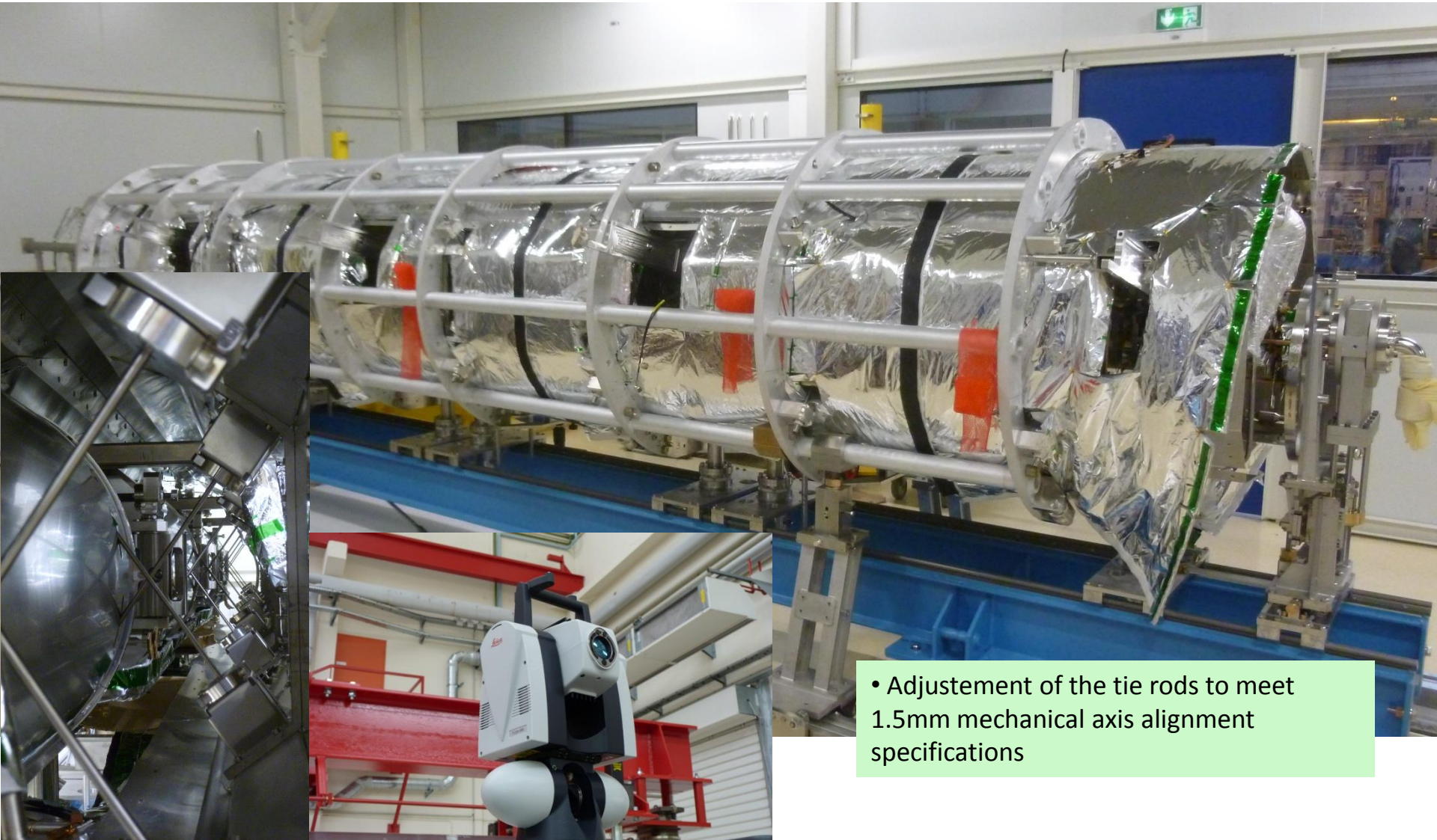
Other surfaces have been cleaned in ISO7 and then sealed with NITO film

Courtesy of N. Bazin

Prealignment in clean room is mandatory : prevent bellow rotation outside the cleanroom, reduce operations outside the cleanroom.

When specifying components take into account how they will be mounted.





- Adjustment of the tie rods to meet 1.5mm mechanical axis alignment specifications

- PARTICULATES SHOULD NOT MOVE OR BE INTRODUCED IN THE STRING DURING PUMPING DOWN OR BACKFILLING.
- DESY STUDIES ON A 10M-LONG TUBE, 63MM SAME LENGTH AS XFEL CRYOMODULE (*REF SRF2009-THPP0104*)

as far as possible from components being sensitive to particles

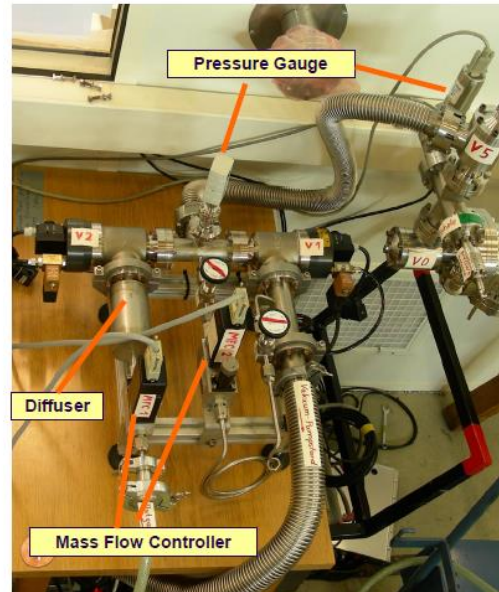
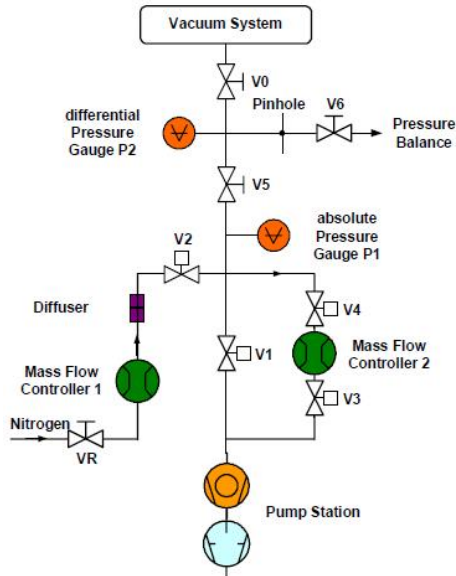
- Movement of particles is mainly observed at the **position next to the pumping and venting** ports. The long tube homogenizes the gas flow and reduces turbulences.

Manual valves, even needle valves, not well suited to adjust the gas flow

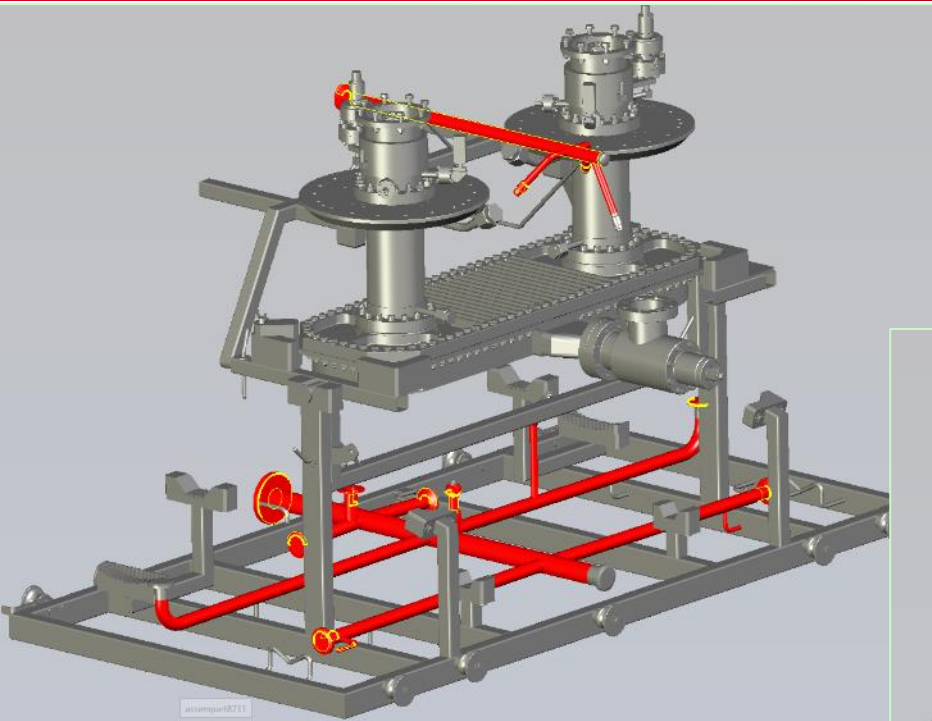
- During pump down the number of particles decreases with decreasing pressure, indicating a reduction of turbulences. In the dirty system particles could be measured down to a pressure of about 100 mbar. If turbulences are again introduced by sudden changes of the throughput of e.g. changing the position of a **needle valve**, particles had been detected down to pressures of about 1 mbar. **Only for pressures < 1 mbar no more particle movement has been observed even when moving valves.**

After venting a system Δp between the vacuum vessel and atmosphere should be $\Delta p < 1$ mbar before opening

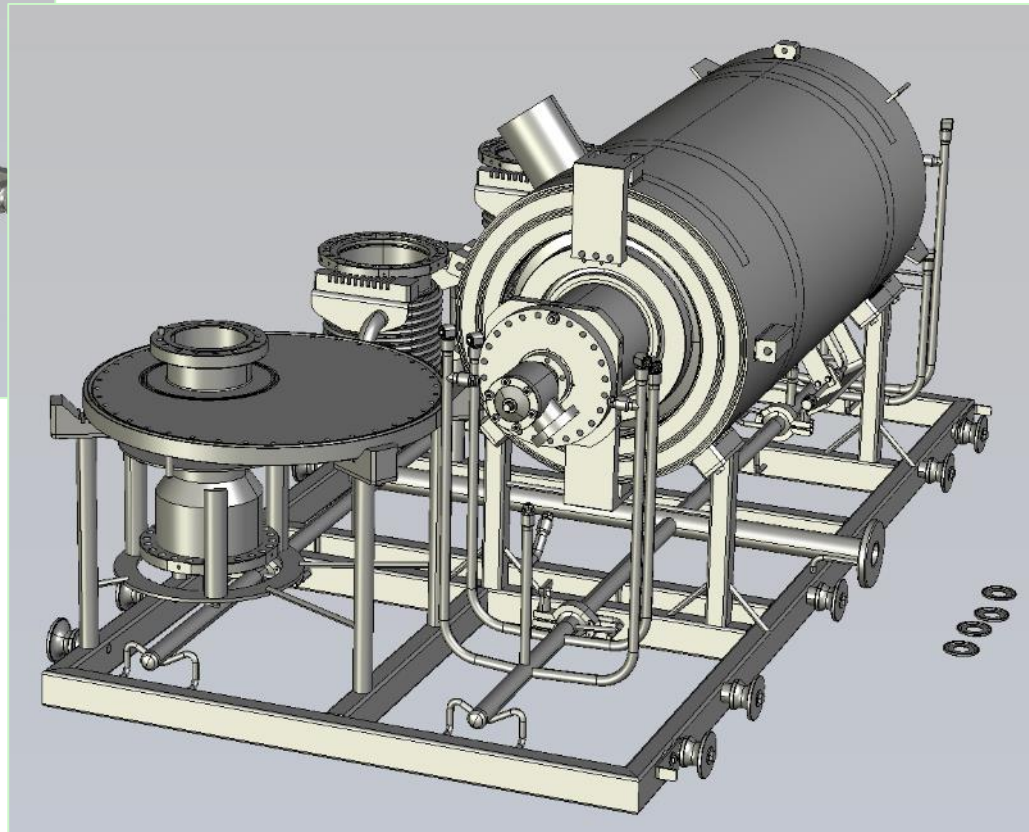
SCHEMATIC OF THE VACUUM GROUP SYSTEM



- Mass flow controller which maintains a constant flux by adjusting the diaphragm opening
- Diffuser to diffuse the flux by almost 360° (from semiconductor industry) to reduce the turbulences with a removal rating 0.003 μm
- Gauges : 1 abs at 1 mbar et 1 differential
- Back to atmospheric pressure : N2 flow (1-1000mbar – $D_p(\text{cav-pump}) < 1\text{mbar}$) : 50 mbar l/s.
- For venting particle filtered gas (N2 or Ar) (particle size $\leq 0.04 \mu\text{m}$) and a gas quality of 99.9999% has to be used or evaporation gas



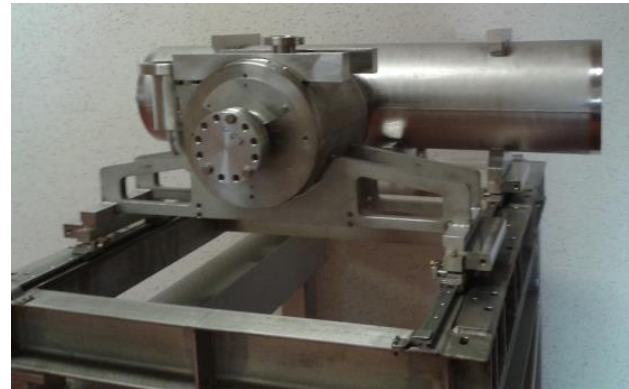
Washing machine cavity and coupler carriage



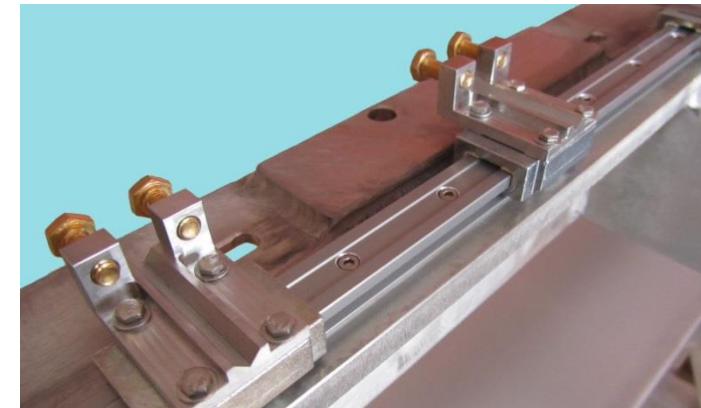
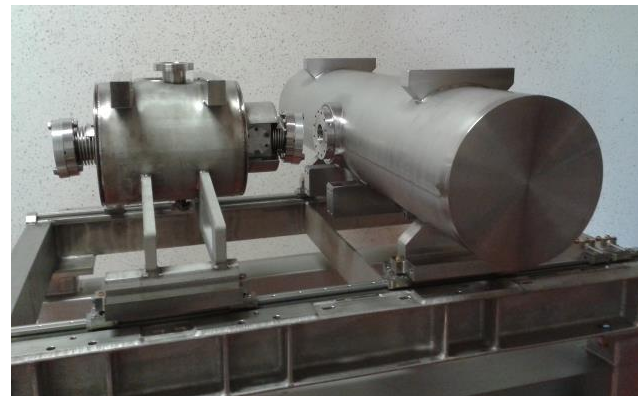
MOCK-UPS AND EVOLUTION

MOCK-UP TESTS : VALIDATION OF THE CLEAN ROOM ASSEMBLY PROCEDURE

- ❑ To validate and / or improve the clean room assembly procedure and the associated tools, a test bench as realistic as possible is needed.
- ❑ A frame, a little bit bigger than one eighth of the final support and equipped with the linear guides and the positioning system, was manufactured. It is possible to assemble one solenoid and two cavities.
- ❑ Because of the late delivery of the final elements, a dummy cavity, a dummy solenoid and a dummy coupler were manufactured.

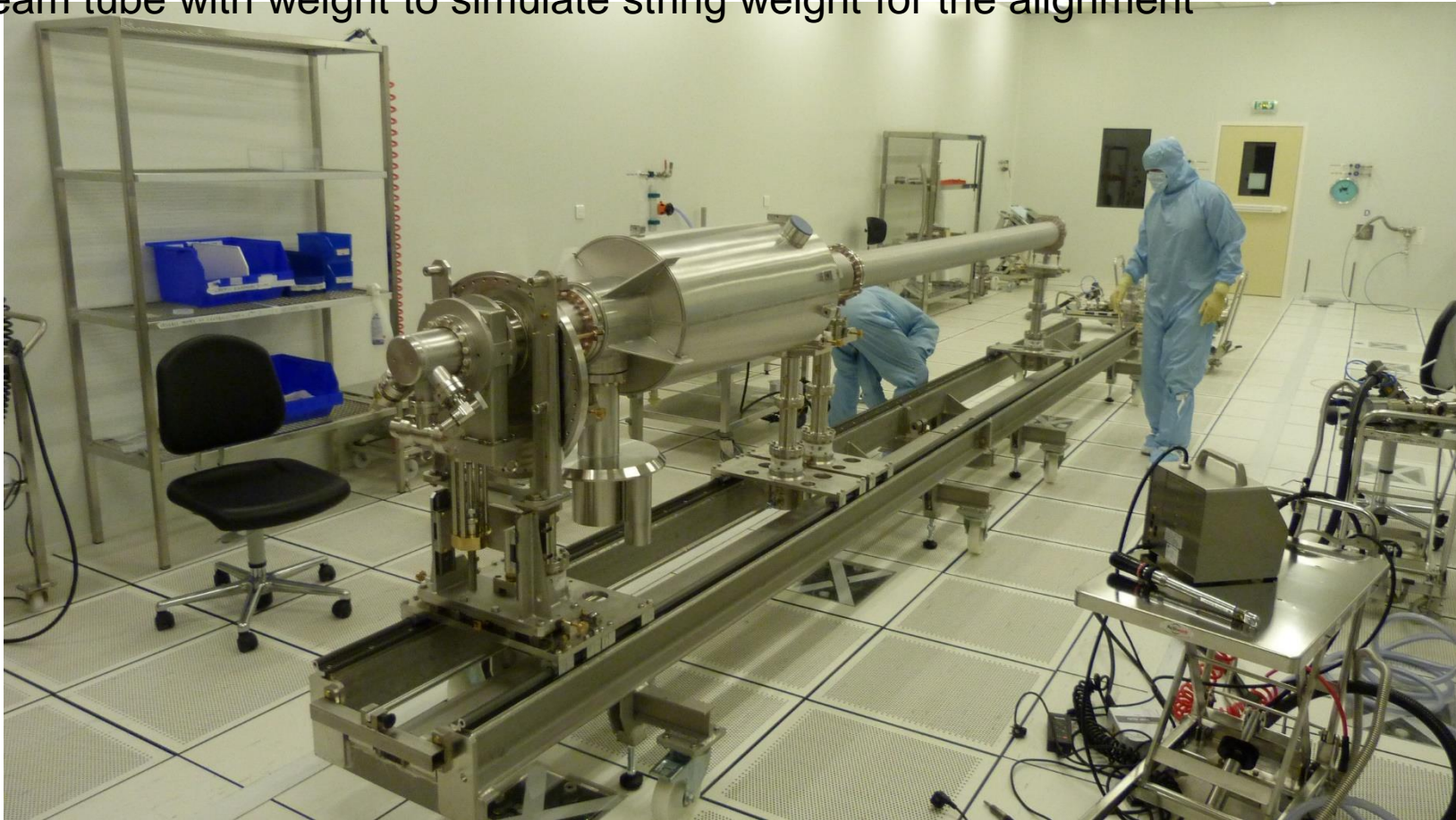


- ❑ All the tools were manufactured and tests have shown no show stopper after CR.

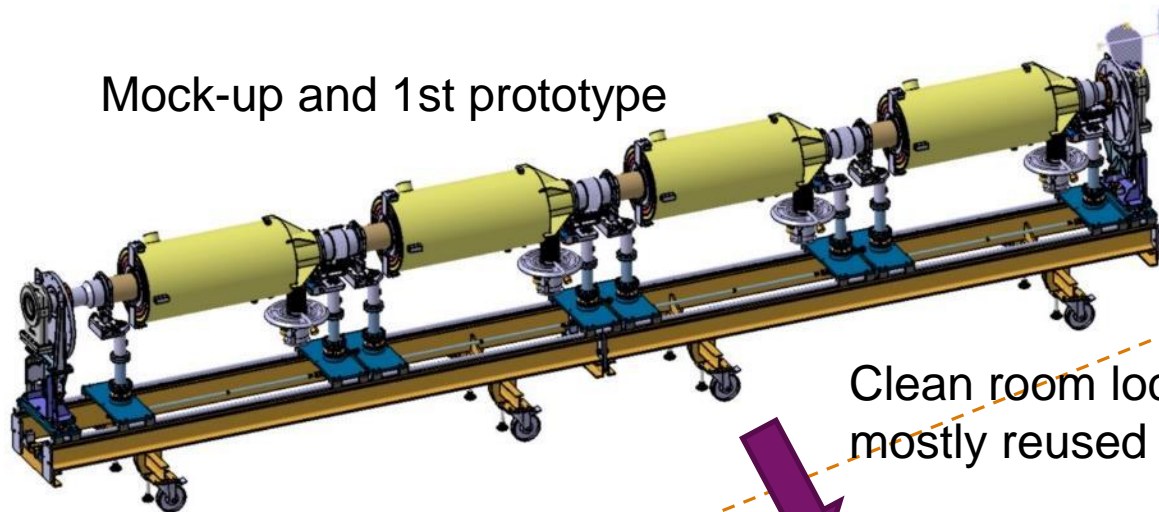


Auxiliary linear guide assembled on the support frame with two carriages equipped with positioning adjustment elements

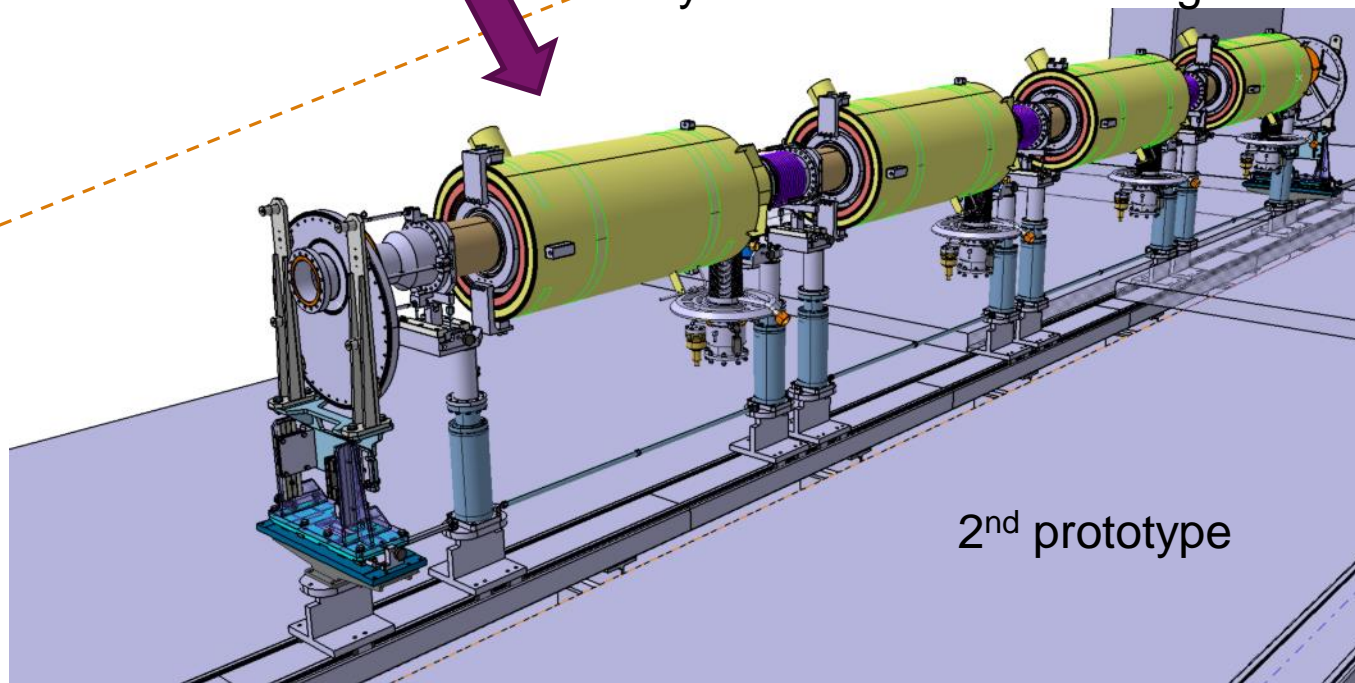
Mock-up test of the cavity string in the clean room with operators with mock-up cavity, Beam tube with weight to simulate string weight for the alignment



Mock-up and 1st prototype

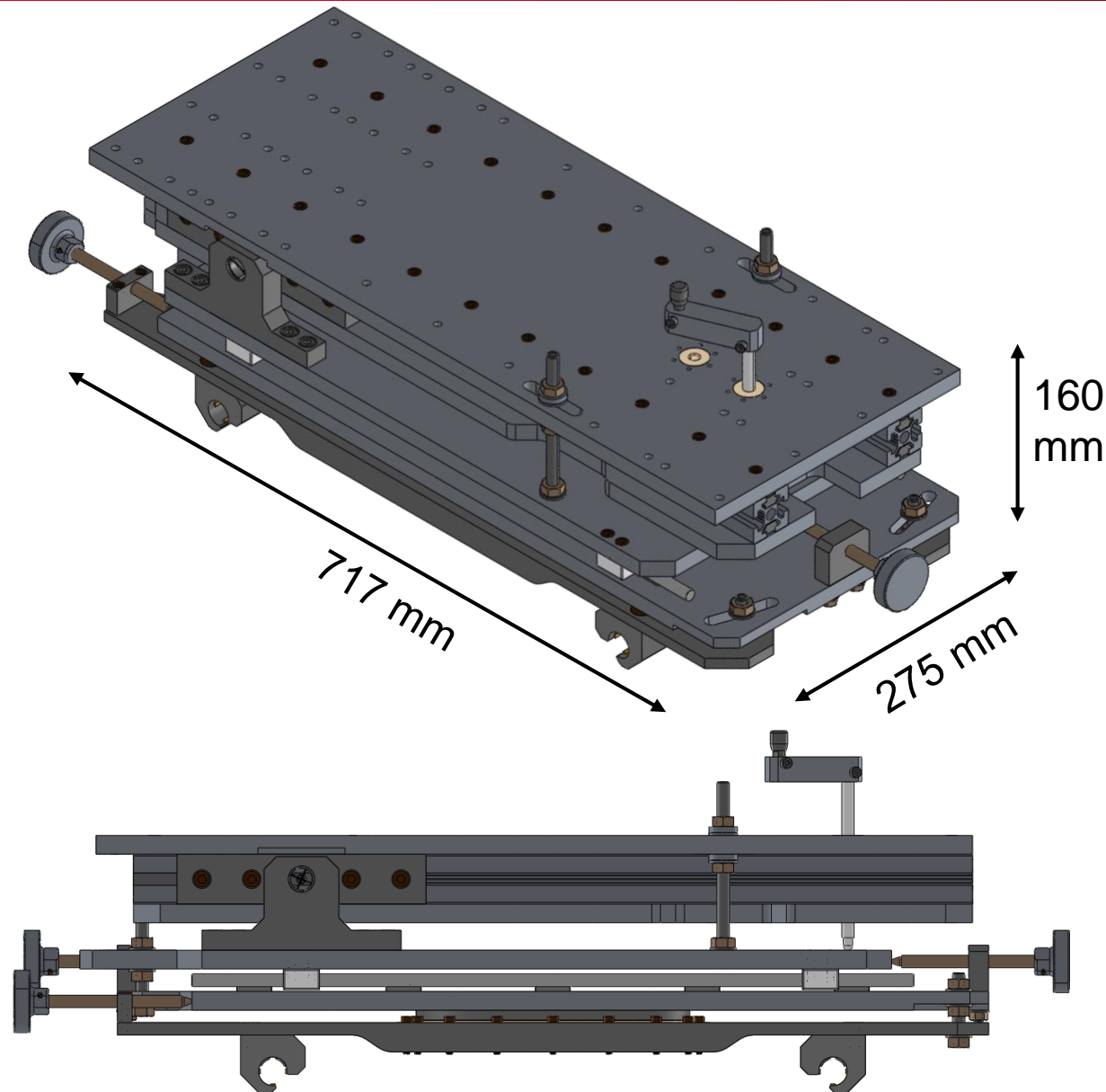


Clean room location has changed,
mostly reused from 1st tooling



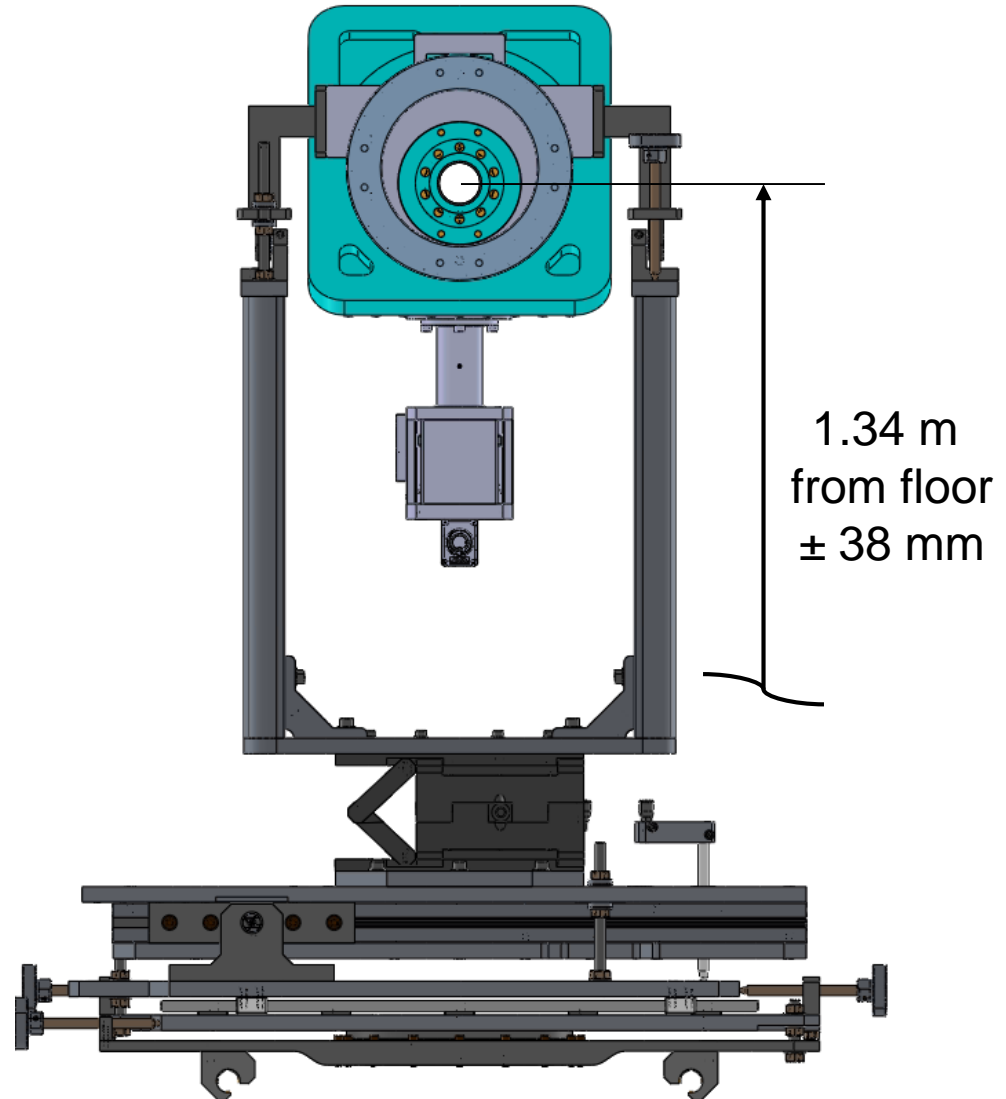
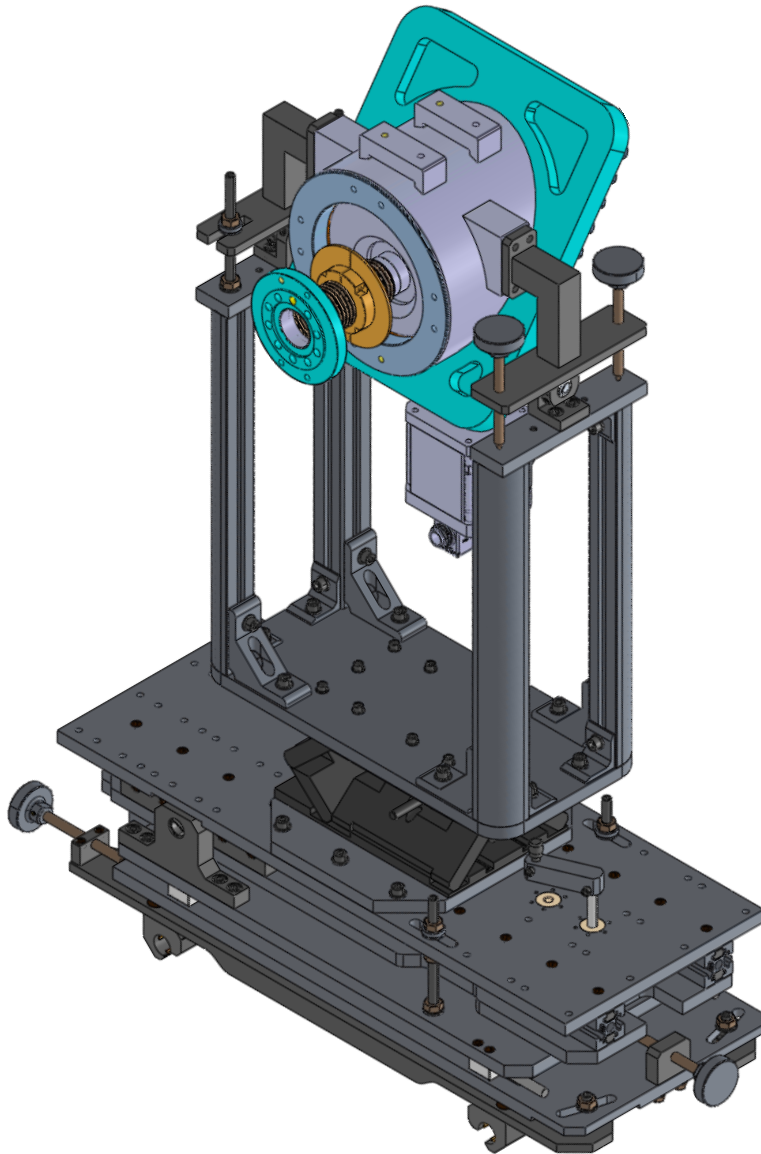
2nd prototype





- A 4 DOF platform can be used for the HB cavity, LB cavity and Cold-warm/Warm-cold transitions
- Each DOF can be easily regulated and locking devices enable to fix the position
- The structure is mainly built in Aluminum

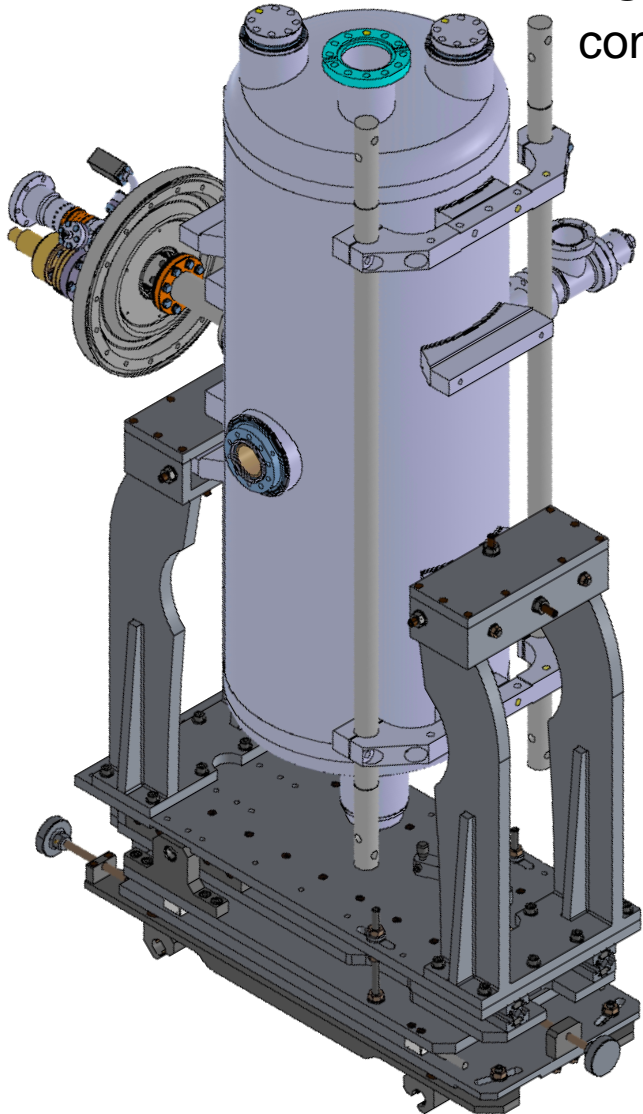
TO REDUCE TAILORED TOOLING, USE OFF-THE-SHELVES AND STANDARD PART TO BE ASSEMBLED



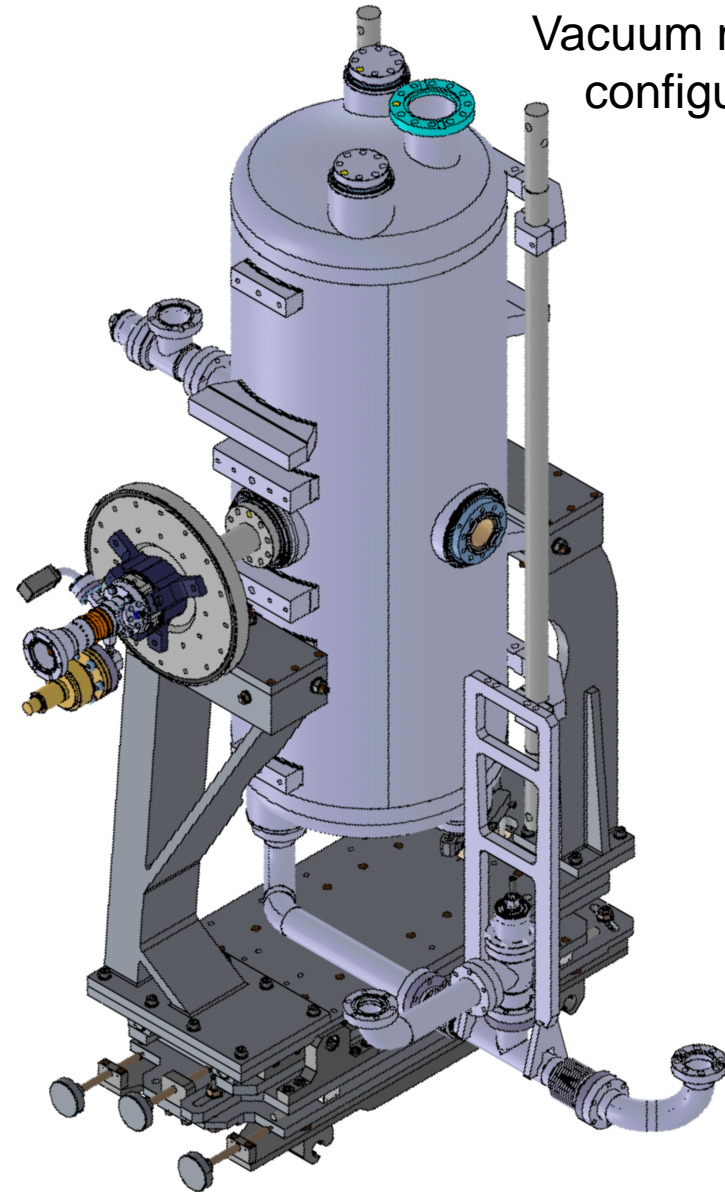
Courtesy of M. Parise

TOOLING: ALWAYS CHECK THE INTERFACES AND INTERFERENCES

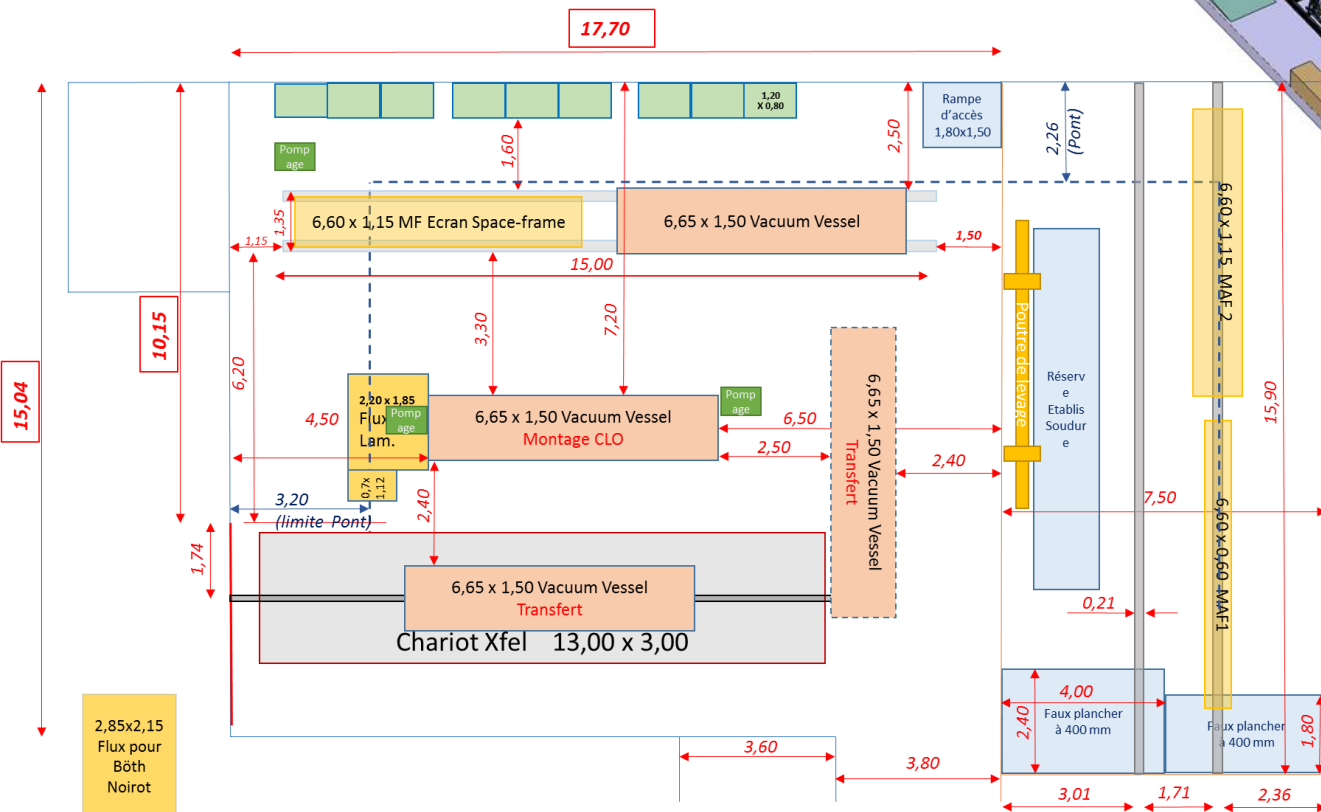
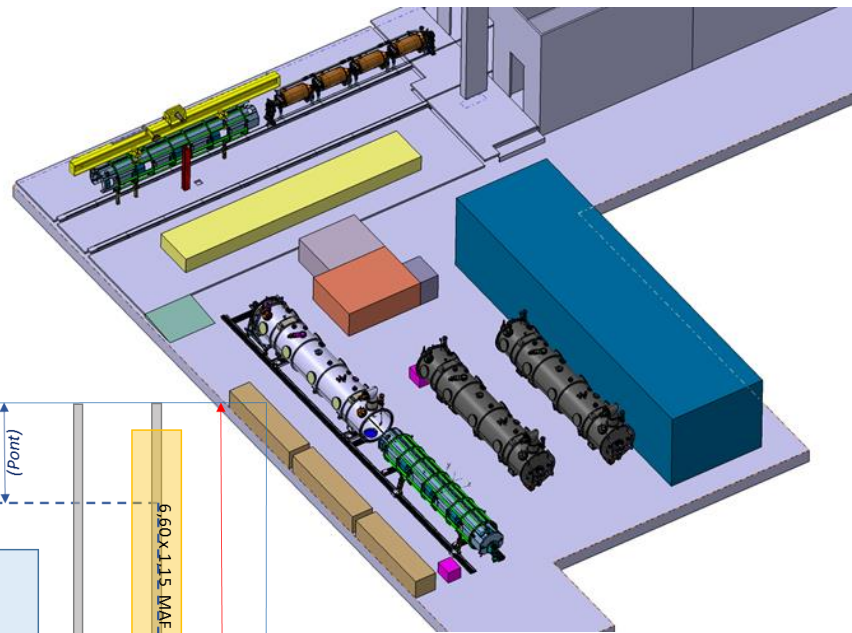
Standard configuration



Vacuum manifold configuration



During the tooling development, mock-up tests and prototype, track modifications and check that they will match the assembly halls (lifting equipment, fluids, alignment fiducials) or update.



OFF THE SHELVES

- Vacuum group : components off-the-shelves, assembly in house or by a company. Some are the lab ones, other for our partners (ESS, SARAF)
- Laser tracker : components off-the-shelves, one at CEA
- RF bench : existing, need refurbishment for each project including maintenance (because developed and used on XFEL), amplifiers and acquisition prg to be done
- N2 gun, particle counters : maintenance or new
- And more ...

QA/QC



Procédure d'assemblage d'un ensemble cavité coupleur



1. Contenu



2. Table des matières

1. Contenu	2
2. Table des matières	3
3. Moyens	4



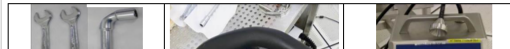
3. Moyens

3.1 Prérequis destinés à l'instructeur et aux utilisateurs de la gamme

L'instructeur doit s'assurer que les gammes ASS-COU 01, 02, 06, 03 et 04 sont effectives.



3.2 Outillages de montage et petits outillages



3.3 Pièces, éléments et consommables de montage



Cette Fiche d'Instructi...

FICHE D'INSTRUCTIO...

Ré	
Fonction	
Nom	
Date	
Signature	



4 Descriptif des opérations

4.1 Préparation du poste et du matériel



- Préparer votre poste de travail en vous assurant que tout le matériel dont vous aurez besoin y est disponible : outillage, visserie et joints nettoyés et contrôlés.



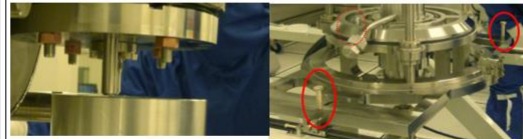
4.2 Réglage et contrôle de la course du plateau cavité coupleur



- Déplacer le plateau coupleur sous la cavité pour commencer les premières étapes d'alignements.



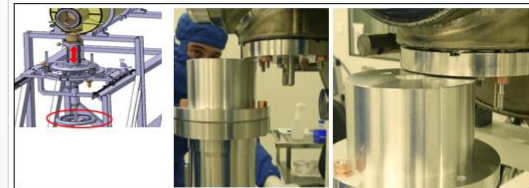
- Positionner le plateau en position basse.
- Utiliser le volant tournant sous le banc pour faire descendre le plateau et donc le coupleur.



- Régler la distance à 1mm entre les pions de la bride cavité.
- Effectuer ce réglage en jouant sur les trois vis rotules argentées de réglages du plateau.



4.3 Réglage de la planéité entre bride coupleur et bride cavité



- Approcher les faces de la cloche coupleur et de la bride cavité.
- Utiliser le volant tournant sous le banc pour faire monter le plateau et donc le coupleur.



- Corriger la planéité entre ces deux faces en jouant sur les 3 vis rotules argentées de réglages du plateau.
- Redescendre le plateau et vérifier que la distance pion/cloche est toujours de l'ordre de 1 mm. Si ce n'est pas le cas ajuster cette distance puis re-régler la planéité.

cea		ees		Assembly Report: Coupler part assembly on cavity - Medium beta -																																	
Template_AR_à définir																																					
1 General Information																																					
Team Folder	1 STR			Document Type:																																	
Manufacturer Name	Commissar. À l'énergie atomique			Assembly Report																																	
Location	COU : Coupler-Cavity assemby in ISO 4																																				
2 Part Information																																					
Part	PBS ID	Part Name (Part Type)	Quantity																																		
Assembly	ce code n'existe pas dans le PB		CCC: Cavity + Cold Coupler																																		
Component 1	3.1.0.0.0.0.0	Cavity M-Beta	(x1)																																		
Component 2	3.2.0.0.0.0.0	Coupler M-Beta	(x1)																																		
3 Validation by Technician & Integration Manager																																					
Name	Technician		Integration Manager																																		
Date	[Ctrl] + [;]		[Ctrl] + [;]																																		
Operation Sequence																																					
Designated	Serial No.	MBL-CM	M-ECCTD																																		
	Serial No.	CCC																																			
1	Cavity M-Beta	Serial No.																																			
	Coupler M-Beta	Serial No.																																			
Nom d'enregistrement du fichier: #REF!																																					
<table border="1"> <thead> <tr> <th>Action</th> <th>Particle Count No.</th> <th>Fix Text</th> <th>Validation</th> </tr> </thead> <tbody> <tr> <td>2</td> <td>Cleaning Alu gasket Nettoyage joint aluminium</td> <td>Compteur de particules N°:</td> <td>Recording No. Enregistrement N°:</td> </tr> <tr> <td></td> <td>Cleaning threaded rods Nettoyage tiges filetées</td> <td>Compteur de particules N°:</td> <td>Recording No. Enregistrement N°:</td> </tr> <tr> <td></td> <td>Cleaning nuts Nettoyage écrous</td> <td>Compteur de particules N°:</td> <td>Recording No. Enregistrement N°:</td> </tr> <tr> <td>3</td> <td colspan="3">Check for proper antenna orientation on coupler: Vérification de l'orientation de l'antenne coupleur:</td> </tr> <tr> <td>4</td> <td>Cleaning antenna Nettoyage de l'antenne</td> <td>Compteur de particules N°:</td> <td>Recording No. Enregistrement N°:</td> </tr> <tr> <td>5</td> <td>Blowing cavity flange Soufflage trou de bride cavité</td> <td>Compteur de particules N°:</td> <td>Recording No. Enregistrement N°:</td> </tr> <tr> <td>6</td> <td colspan="3">Additional Comments (Remarques supplémentaires):</td> </tr> </tbody> </table>						Action	Particle Count No.	Fix Text	Validation	2	Cleaning Alu gasket Nettoyage joint aluminium	Compteur de particules N°:	Recording No. Enregistrement N°:		Cleaning threaded rods Nettoyage tiges filetées	Compteur de particules N°:	Recording No. Enregistrement N°:		Cleaning nuts Nettoyage écrous	Compteur de particules N°:	Recording No. Enregistrement N°:	3	Check for proper antenna orientation on coupler: Vérification de l'orientation de l'antenne coupleur:			4	Cleaning antenna Nettoyage de l'antenne	Compteur de particules N°:	Recording No. Enregistrement N°:	5	Blowing cavity flange Soufflage trou de bride cavité	Compteur de particules N°:	Recording No. Enregistrement N°:	6	Additional Comments (Remarques supplémentaires):		
Action	Particle Count No.	Fix Text	Validation																																		
2	Cleaning Alu gasket Nettoyage joint aluminium	Compteur de particules N°:	Recording No. Enregistrement N°:																																		
	Cleaning threaded rods Nettoyage tiges filetées	Compteur de particules N°:	Recording No. Enregistrement N°:																																		
	Cleaning nuts Nettoyage écrous	Compteur de particules N°:	Recording No. Enregistrement N°:																																		
3	Check for proper antenna orientation on coupler: Vérification de l'orientation de l'antenne coupleur:																																				
4	Cleaning antenna Nettoyage de l'antenne	Compteur de particules N°:	Recording No. Enregistrement N°:																																		
5	Blowing cavity flange Soufflage trou de bride cavité	Compteur de particules N°:	Recording No. Enregistrement N°:																																		
6	Additional Comments (Remarques supplémentaires):																																				

cea		ees		Assembly Report: Coupler part assembly on cavity - Medium beta -																																	
Template_AR_à définir																																					
1 General Information																																					
Team Folder	1 STR			Document Type:																																	
Manufacturer Name	Commissar. À l'énergie atomique			Assembly Report																																	
Location	COU : Coupler-Cavity assemby in ISO 4																																				
2 Part Information																																					
Part	PBS ID	Part Name (Part Type)	Quantity																																		
Assembly	ce code n'existe pas dans le PB		CCC: Cavity + Cold Coupler																																		
Component 1	3.1.0.0.0.0.0	Cavity M-Beta	(x1)																																		
Component 2	3.2.0.0.0.0.0	Coupler M-Beta	(x1)																																		
3 Validation by OPERATOR & Integration Manager																																					
Name	OPERATOR		Integration Manager																																		
Date	[Ctrl] + [;]		[Ctrl] + [;]																																		
	CYRIL BOULCH & ADRIEN BOUYGUES		S. BERRY																																		
	25/01/17																																				
Operation Sequence																																					
Designated	Serial No.	MBL-CM	M-ECCTD																																		
	Serial No.	CCC	001																																		
1	Cavity M-Beta	Serial No.	ESS 067	P02																																	
	Coupler M-Beta	Lot No.	PMB	PMB 1002-001																																	
Nom d'enregistrement du fichier: #REF!																																					
<table border="1"> <thead> <tr> <th>Action</th> <th>Particle Count No.</th> <th>Fix Text</th> <th>Validation</th> </tr> </thead> <tbody> <tr> <td>2</td> <td>Cleaning Alu gasket Nettoyage joint aluminium</td> <td>Compteur de particules N°:</td> <td>Recording No. Enregistrement N°:</td> </tr> <tr> <td></td> <td>Cleaning threaded rods Nettoyage tiges filetées</td> <td>Compteur de particules N°:</td> <td>Recording No. Enregistrement N°:</td> </tr> <tr> <td></td> <td>Cleaning nuts Nettoyage écrous</td> <td>Compteur de particules N°:</td> <td>Recording No. Enregistrement N°:</td> </tr> <tr> <td>3</td> <td colspan="3">Check for proper antenna orientation on coupler: Vérification de l'orientation de l'antenne coupleur:</td> </tr> <tr> <td>4</td> <td>Cleaning antenna Nettoyage de l'antenne</td> <td>Compteur de particules N°:</td> <td>Recording No. Enregistrement N°:</td> </tr> <tr> <td>5</td> <td>Blowing cavity flange Soufflage trou de bride cavité</td> <td>Compteur de particules N°:</td> <td>Recording No. Enregistrement N°:</td> </tr> <tr> <td>6</td> <td colspan="3">Additional Comments (Remarques supplémentaires):</td> </tr> </tbody> </table>						Action	Particle Count No.	Fix Text	Validation	2	Cleaning Alu gasket Nettoyage joint aluminium	Compteur de particules N°:	Recording No. Enregistrement N°:		Cleaning threaded rods Nettoyage tiges filetées	Compteur de particules N°:	Recording No. Enregistrement N°:		Cleaning nuts Nettoyage écrous	Compteur de particules N°:	Recording No. Enregistrement N°:	3	Check for proper antenna orientation on coupler: Vérification de l'orientation de l'antenne coupleur:			4	Cleaning antenna Nettoyage de l'antenne	Compteur de particules N°:	Recording No. Enregistrement N°:	5	Blowing cavity flange Soufflage trou de bride cavité	Compteur de particules N°:	Recording No. Enregistrement N°:	6	Additional Comments (Remarques supplémentaires):		
Action	Particle Count No.	Fix Text	Validation																																		
2	Cleaning Alu gasket Nettoyage joint aluminium	Compteur de particules N°:	Recording No. Enregistrement N°:																																		
	Cleaning threaded rods Nettoyage tiges filetées	Compteur de particules N°:	Recording No. Enregistrement N°:																																		
	Cleaning nuts Nettoyage écrous	Compteur de particules N°:	Recording No. Enregistrement N°:																																		
3	Check for proper antenna orientation on coupler: Vérification de l'orientation de l'antenne coupleur:																																				
4	Cleaning antenna Nettoyage de l'antenne	Compteur de particules N°:	Recording No. Enregistrement N°:																																		
5	Blowing cavity flange Soufflage trou de bride cavité	Compteur de particules N°:	Recording No. Enregistrement N°:																																		
6	Additional Comments (Remarques supplémentaires):																																				

THANKS FOR YOUR ATTENTION

Commissariat à l'énergie atomique et aux énergies alternatives
Centre de Saclay | 91191 Gif-sur-Yvette Cedex

Etablissement public à caractère industriel et commercial | R.C.S Paris B 775 685 019



Direction de la Recherche Fondamentale
Institut de recherche
sur les lois fondamentales de l'Univers
Service