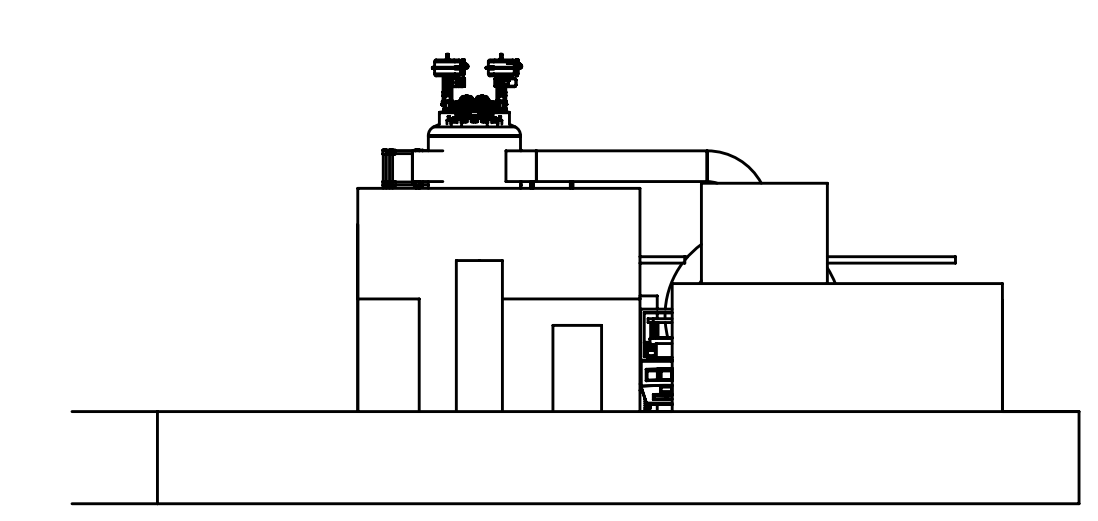
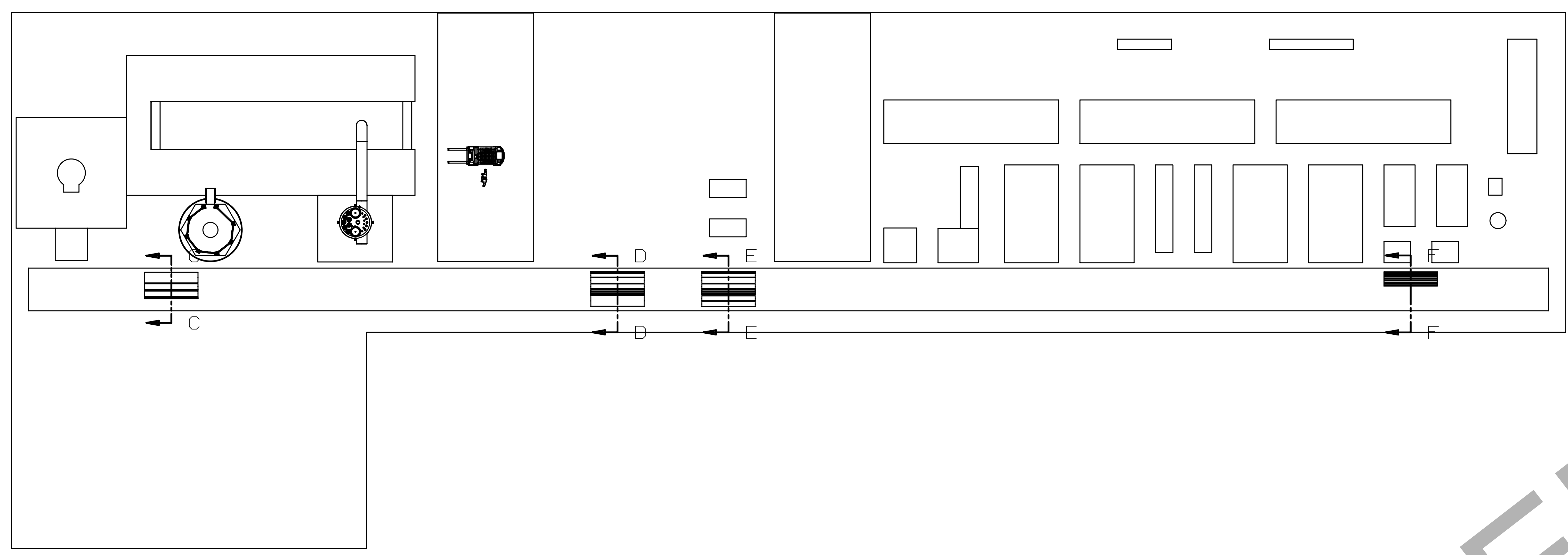
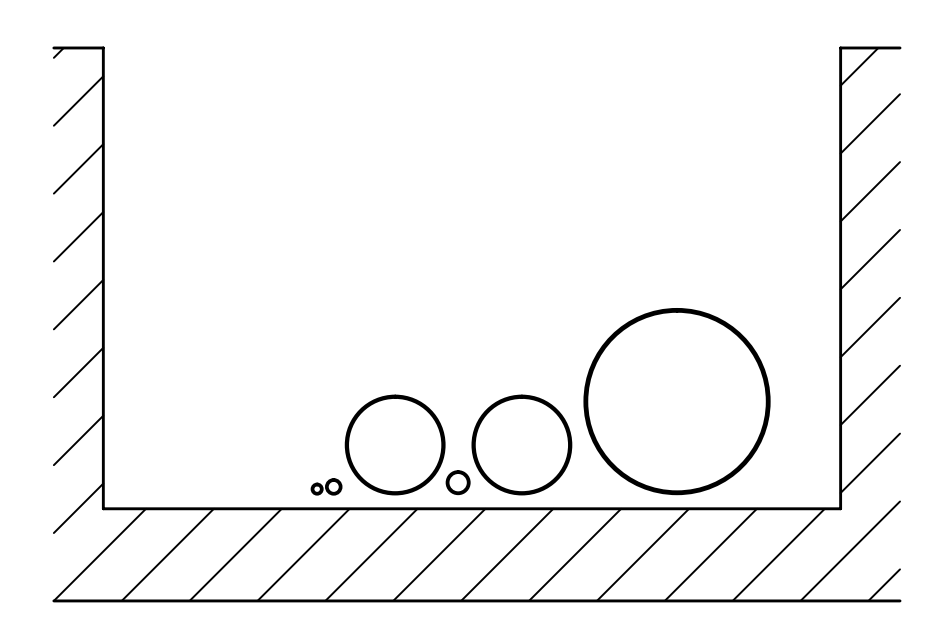


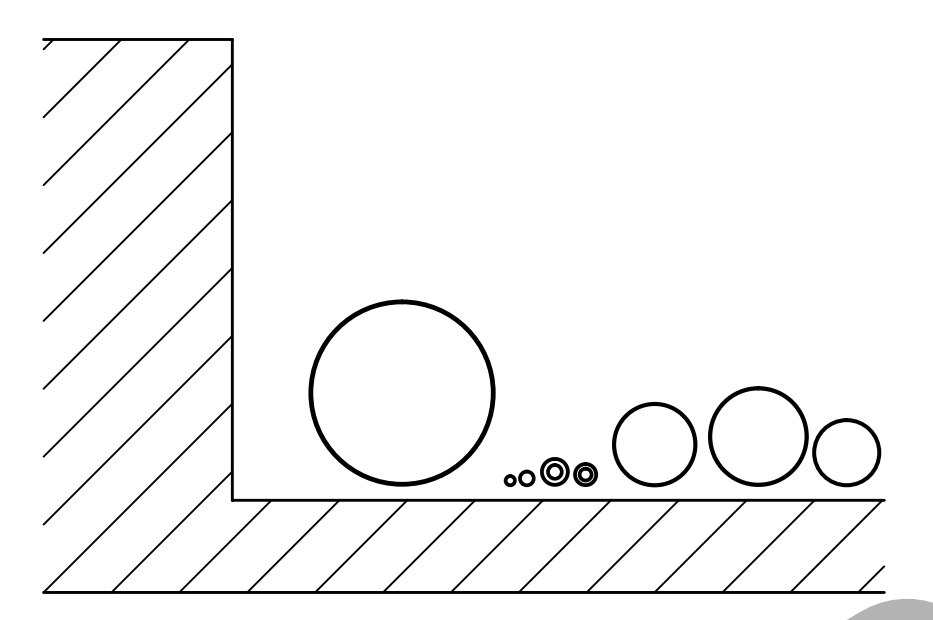
REV	REVISION CONTROL DOCUMENT	DATES	SIGNATURES
-	F10105374---RCD		



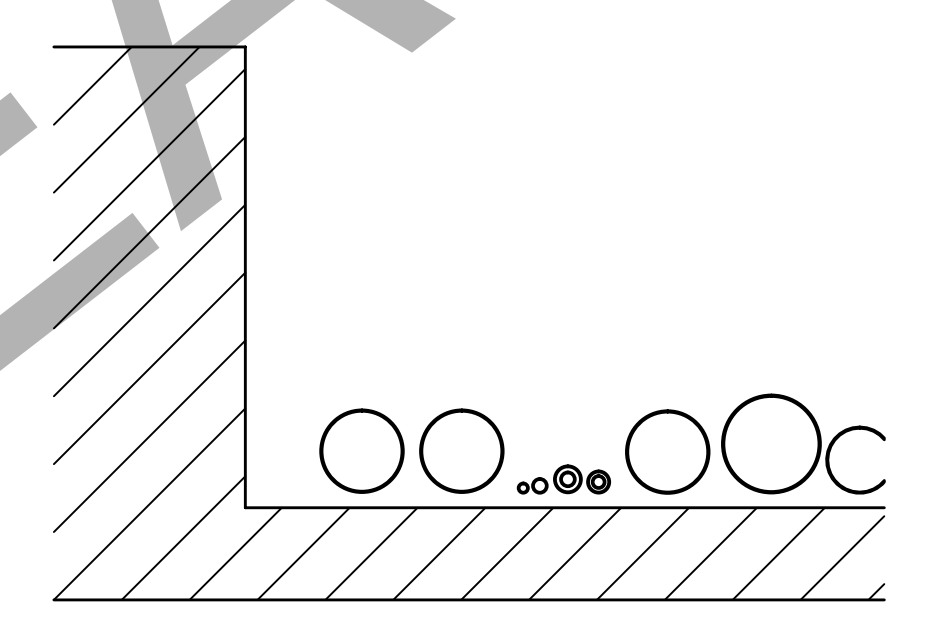
SECTION G-G



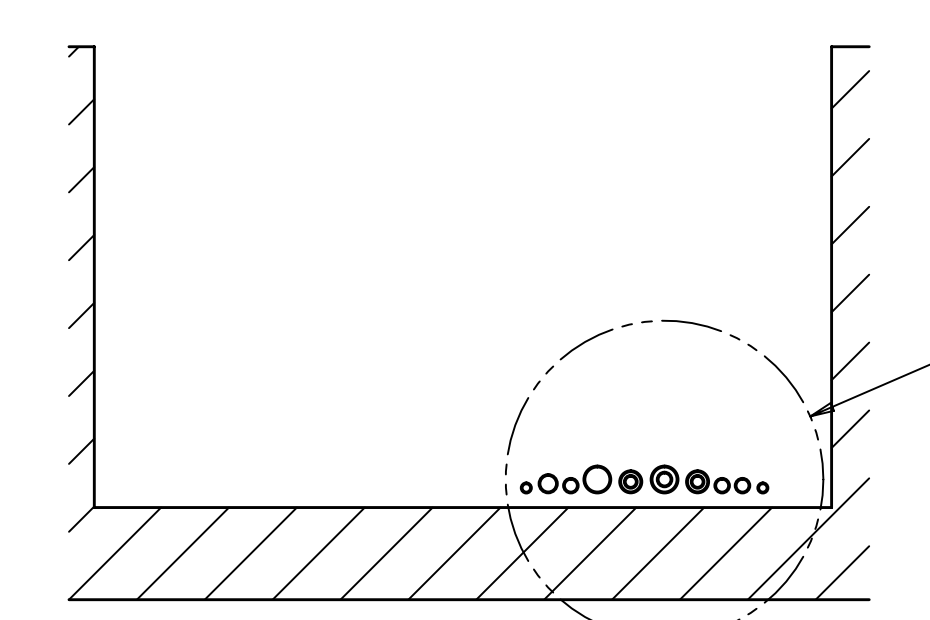
SECTION C-C



SECTION D-D

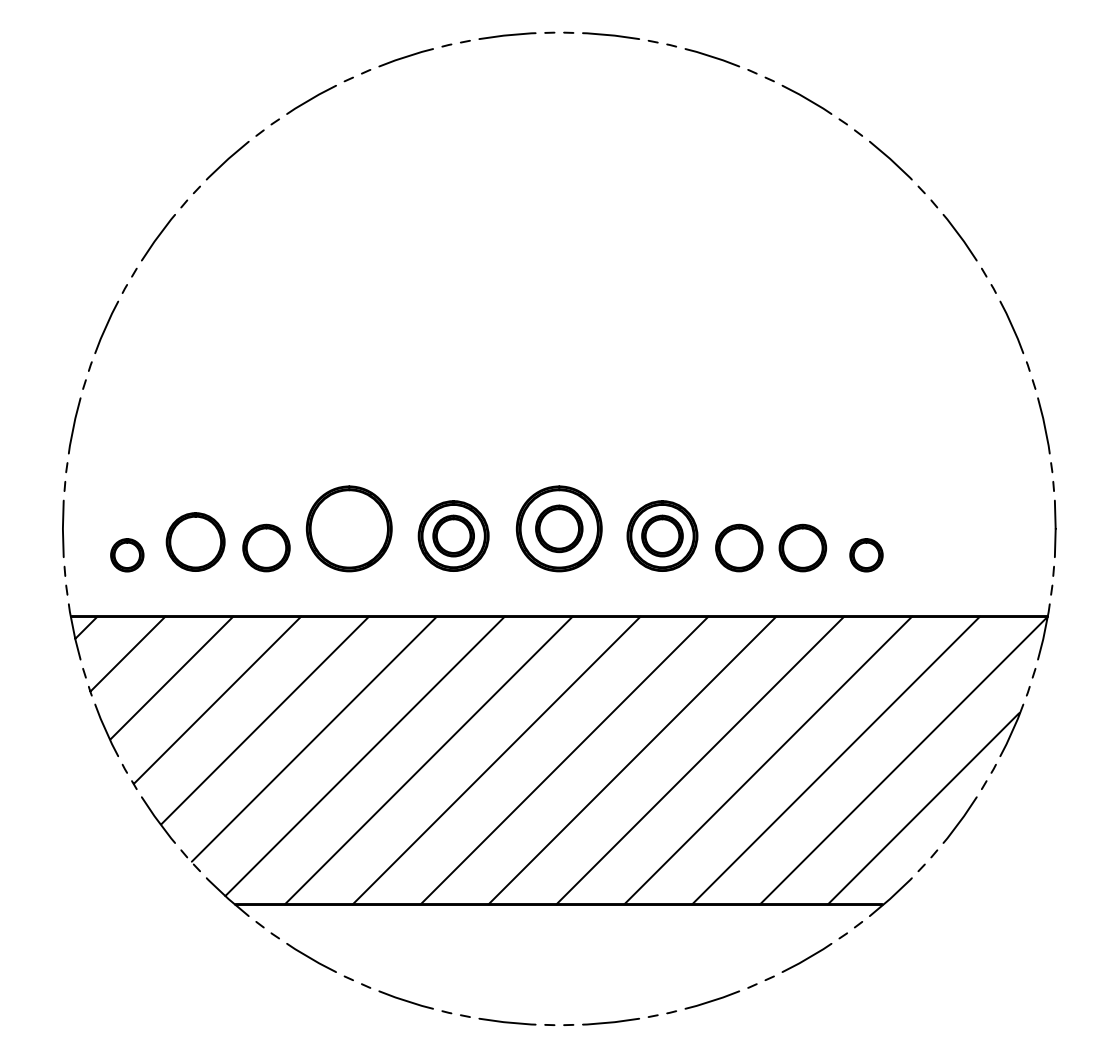
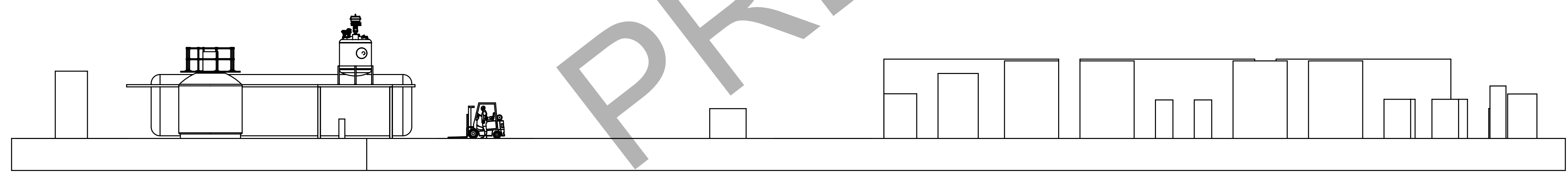


SECTION E-E



SECTION F-F

DETAIL H



DETAIL H
SCALE 1:8

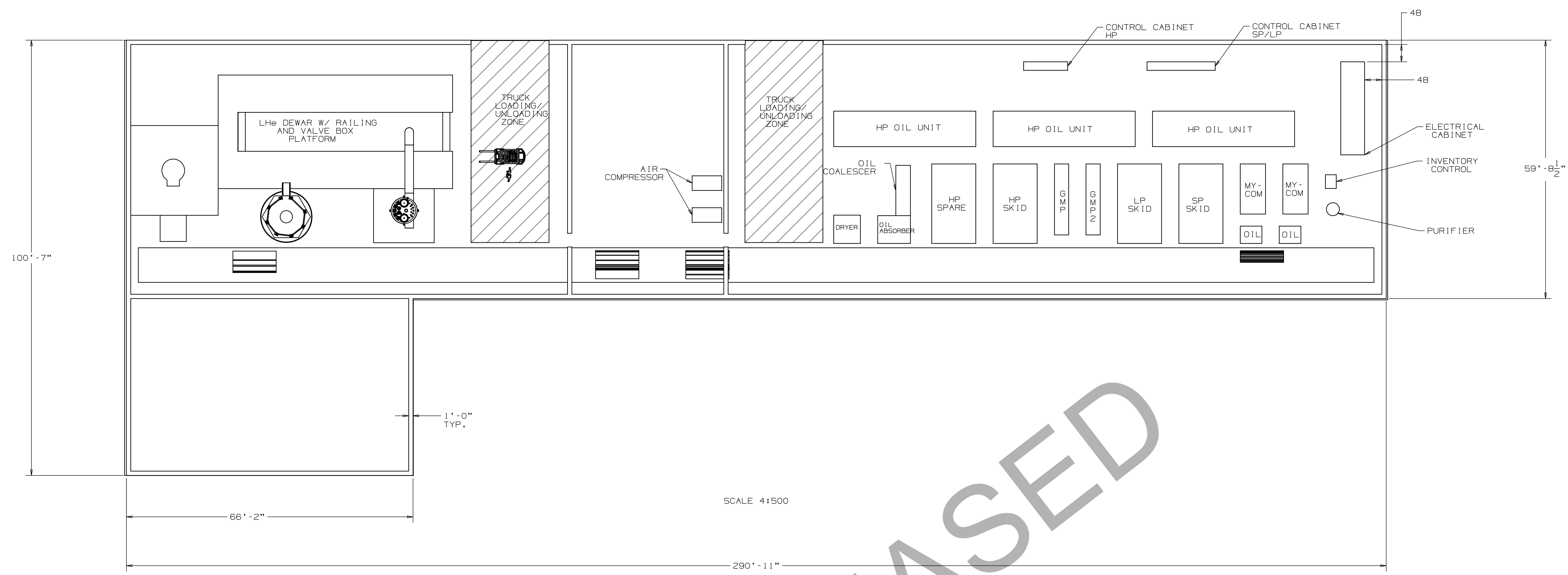
PRE-RELEASED

NOTES: (UNLESS OTHERWISE SPECIFIED)
 1. ESTIMATED DISTANCE NEEDED TO REMOVE END CAP AND LEAVE A 48" GAP.
 2. DIMENSIONS IN [X.X] ARE METERS.

NAME	FC#	LARGEST SIZE INCH (MM)			REFERENCE	L	W	H	REFERENCE
		L	W	H					
INVENTORY CONTROL	67122	139.5 (3543)	40.5 (1028)	109.8 (2790)	LINK	138.0 (3505)	39.4 (1000)	109.6 (2785)	
DRYER	67123	73.9 (1878)	78.5 (1994)	100.5 (2552)	AQUAGAS	78.4 (1992)	76.1 (1932)	90.2 (2291)	WCS BUILDING LAYOUT
OIL COALESCER	67124	139.5 (3543)	40.5 (1028)	109.8 (2790)	LINDE	138.0 (3505)	39.4 (1000)	109.6 (2785)	WCS BUILDING LAYOUT
HP OIL UNIT	67125	393.7 (10000)	141.7 (3600)	178.4 (4531)	WCS BUILDING LAYOUT	315.0 (8000)	137.8 (3500)	174.0 (4420)	AERZEN
LP OIL UNIT	67126	393.7 (10000)	141.7 (3600)	178.4 (4531)	WCS BUILDING LAYOUT	393.7 (10000)	137.8 (3500)	174.0 (4420)	AERZEN
LP SKID	67127	220.5 (5600)	122.0 (3100)	174.4 (4430)	WCS BUILDING LAYOUT	224.4 (5700)	98.4 (2500)	116.1 (2950)	AERZEN
SP SKID	67128	220.5 (5600)	122.0 (3100)	174.4 (4430)	WCS BUILDING LAYOUT	224.4 (5700)	98.4 (2500)	116.1 (2950)	AERZEN
HP SPARE	67129	220.5 (5600)	122.0 (3100)	174.4 (4430)	WCS BUILDING LAYOUT	224.4 (5700)	98.4 (2500)	116.1 (2950)	AERZEN
HP PRIMARY	67130	220.5 (5600)	122.0 (3100)	174.4 (4430)	WCS BUILDING LAYOUT	224.4 (5700)	98.4 (2500)	116.1 (2950)	AERZEN
MYCOM	67131	139.0 (3530)	70.0 (1778)	89.0 (2260)	F00483726				
OIL	67132	48.0 (1219)	60.0 (1524)	89.0 (2260)	F00483726				
OIL ABSORBER	67133	90.6 (2302)	77.1 (1958)	146.1 (3712)	LINDE	86.6 (2200)	77.1 (1958)	146.1 (3712)	WCS BUILDING LAYOUT
PURIFIER	67134	36.0 (914)	36.0 (914)	118.0 (2997)					
COLD BOX WITH WORK PLATFORM	67135	849.8 (21500)	315.0 (8000)	279.5 (7100)	LINDE	613.1 (15574)	231.92 (5892)	182.4 (4634)	AIR LIQUIDE
GAS MANAGEMENT PANEL	67136	196.9 (5000)	39.4 (1000)	86.6 (2200)	WCS BUILDING LAYOUT				
CONTROL CABINET SP/LP	67137	189.0 (4800)	23.6 (600)	86.6 (2200)	WCS BUILDING LAYOUT				
CONTROL CABINET HP	67138	157.5 (4000)	23.6 (600)	86.6 (2200)	WCS BUILDING LAYOUT				
EVAPORATOR (VAPORIZER)	67139	72.4 (1840)	60.6 (1540)	269.3 (6840)	LINDE				
AIR COMPRESSOR	67145	82.0 (2083)	40.5 (1028)	67.0 (1702)	PER BEN'S E-MAIL				

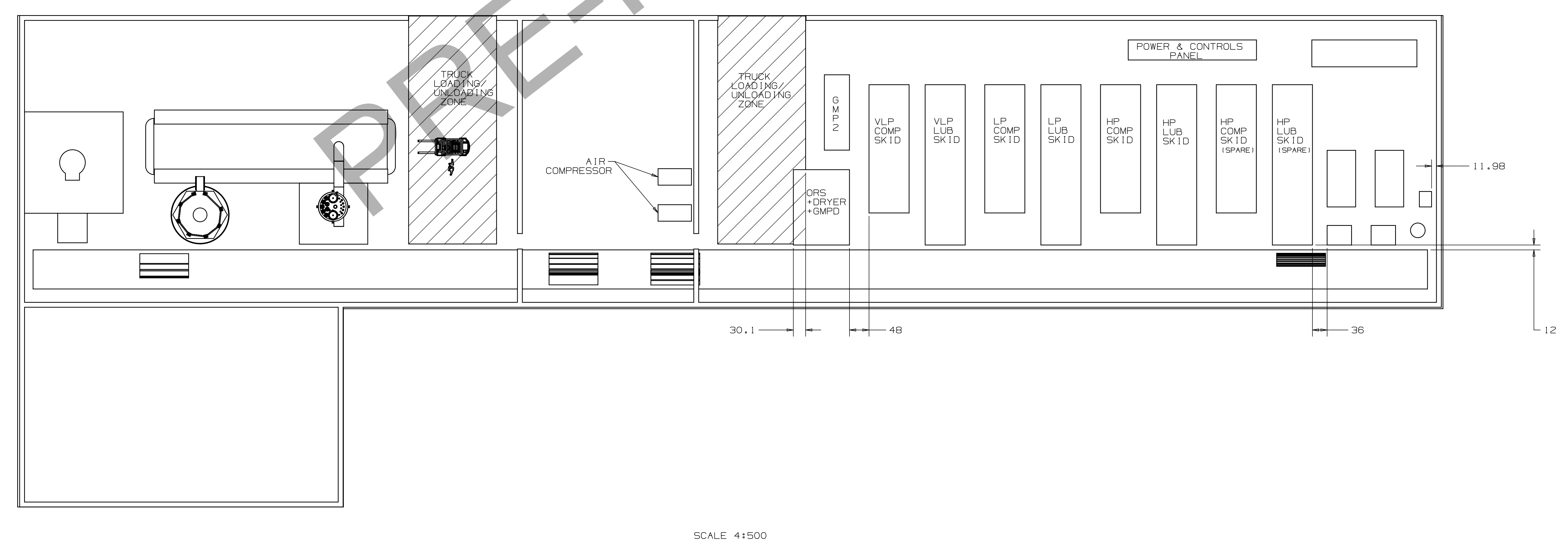
UNLESS OTHERWISE SPECIFIED		DRWN	R. NOCEDA	DATE	22-Jun-2018	 FERMI NATIONAL ACCELERATOR LABORATORY UNITED STATES DEPARTMENT OF ENERGY
1:X	1:XX	1:XXX	1:X/X	1:X'	CHECKED	
.1	.02	.005	1/16	1"	APPROVED	DATE
BREAM ALL SHARP EDGES .015 MAX. DO NOT SCALE DRAWING DIMENSIONS BASED ON ASME Y14.5-2009 MAX. ALL MACH SURFACES 125/ DRAWING UNITS: INCHES		MATERIAL		PROJECT: Technical Division - Design and Drafting CASE CODE: QJ588		SCALE 1:150 & AS SHOWN
PIP-11 BUILDING LAYOUT				DRAWING NUMBER	F10105374	SHEET
				REV	1 OF 2	REV

REV	REVISION	CONTROL DOCUMENT	DATES	DRAWN	SIGNATURES
-	F10105374	-	-	APPROVED	



LINDE LAYOUT

AIR LIQUIDE LAYOUT



UNLESS OTHERWISE SPECIFIED					DRWN	R. NOCEDA	DATE	22-Jun-2018
±.X	±.XX	±.XXX	±X/X	±X'	CHECKED		DATE	
.1	.02	.005	1/16	1"	APPROVED		DATE	
BREAK ALL SHARP EDGES .015 MAX. DO NOT SCALE DRAWING DIMENSIONS BASED ON ASME Y14.5-2009 MAX. ALL MACH SURFACES 125/ DRAWING UNITS: INCHES					USED ON			
MATERIAL					NAME			
GROUP: Technical Division - Design and Drafting CASE CODE: 0358					FERMILAB			
SCALE					DRAWING NUMBER			
1:150 & AS SHOWN					E F10105374			
SHEET					REV			
2 of 2					-			