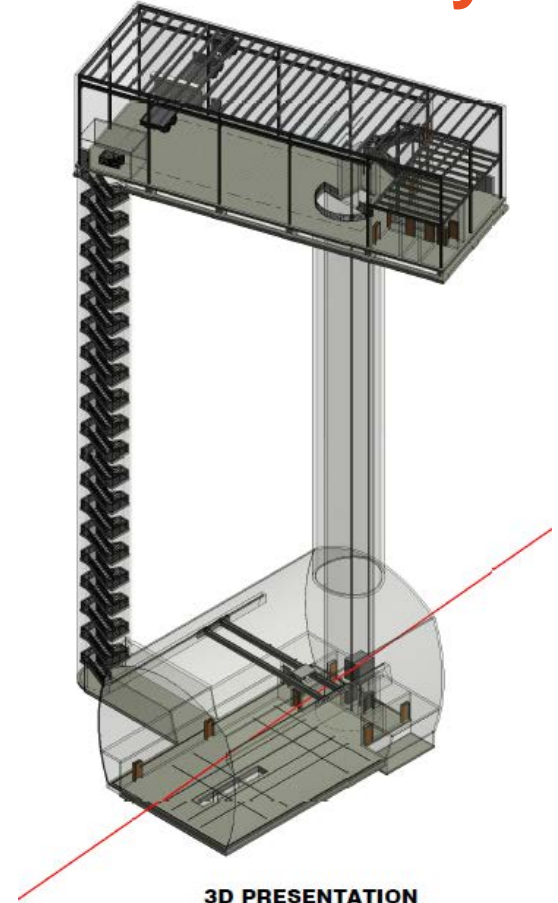


Ideas for the DUNE Near Detector Cavern Layout



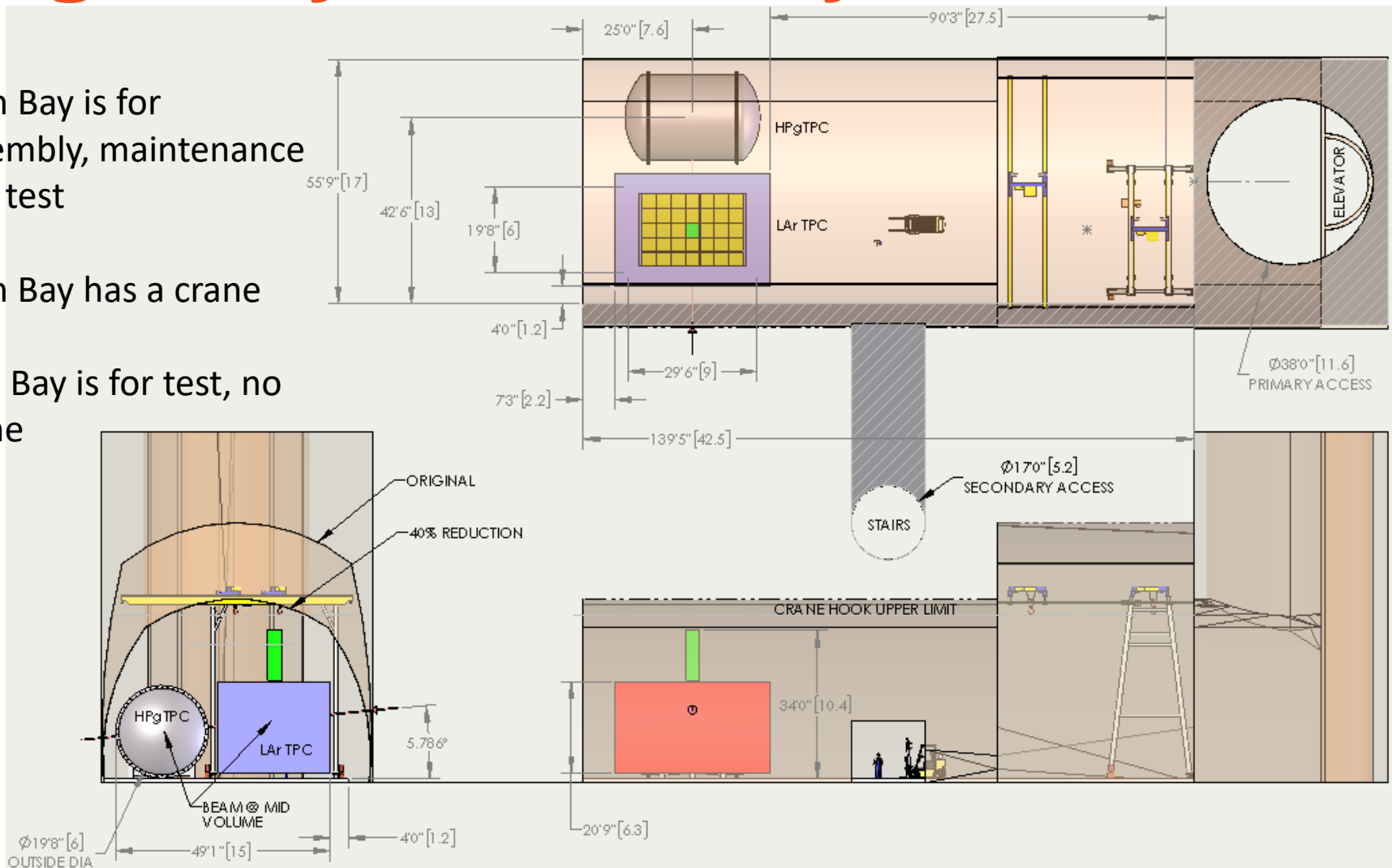
3D PRESENTATION

SCALE: N.T.S.



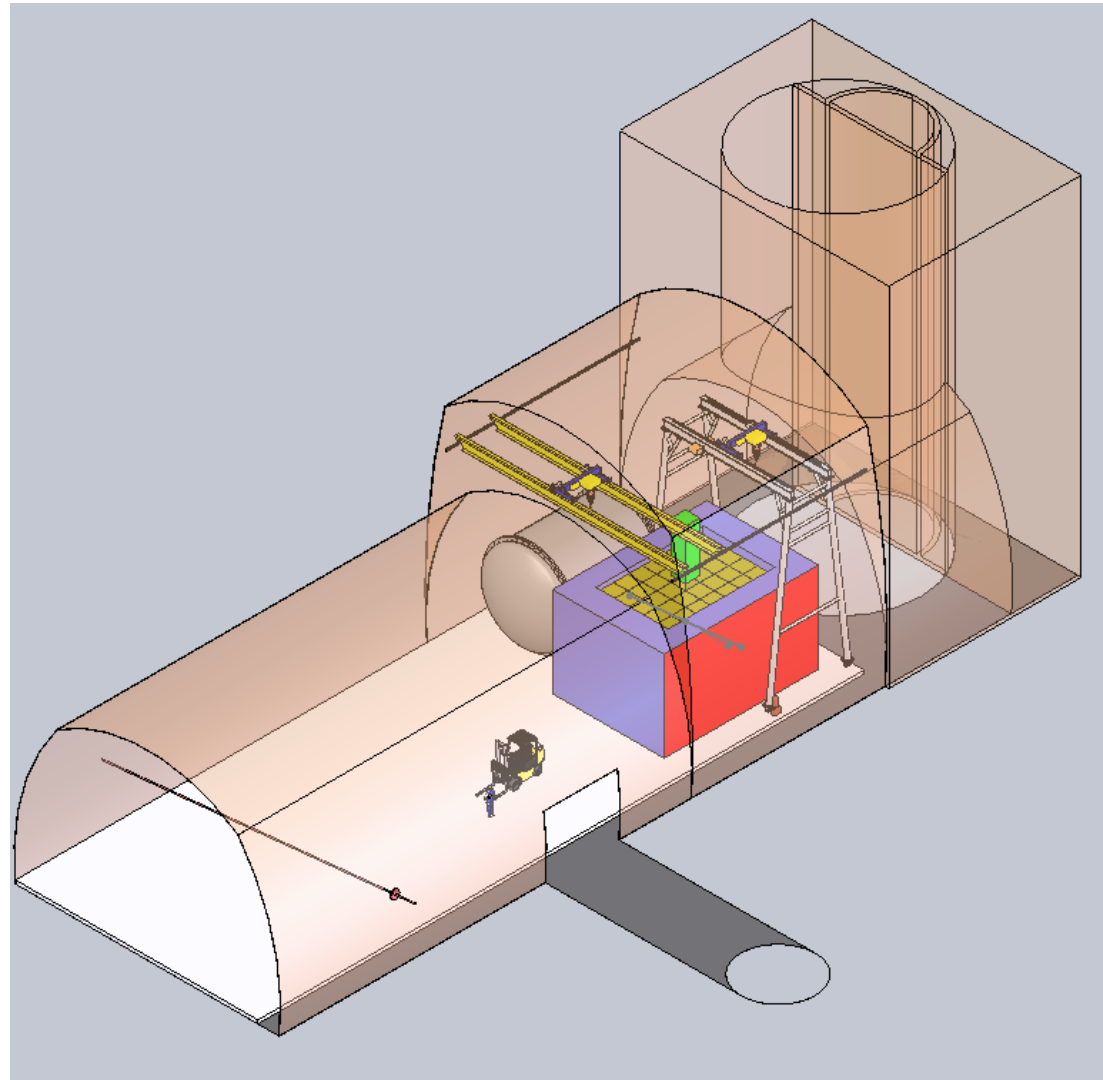
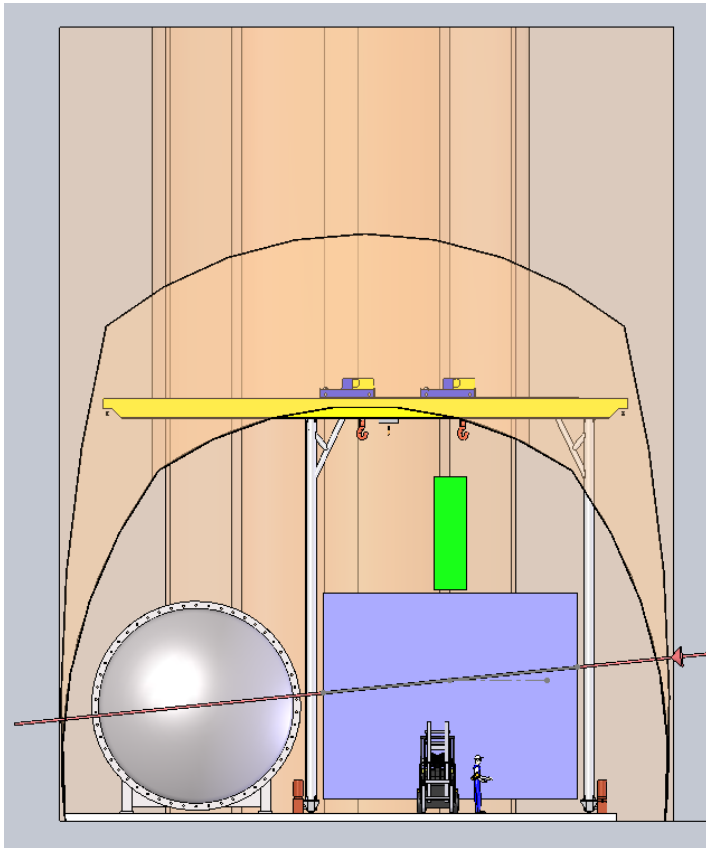
High Bay & Low Bays

- High Bay is for assembly, maintenance and test
- High Bay has a crane
- Low Bay is for test, no crane



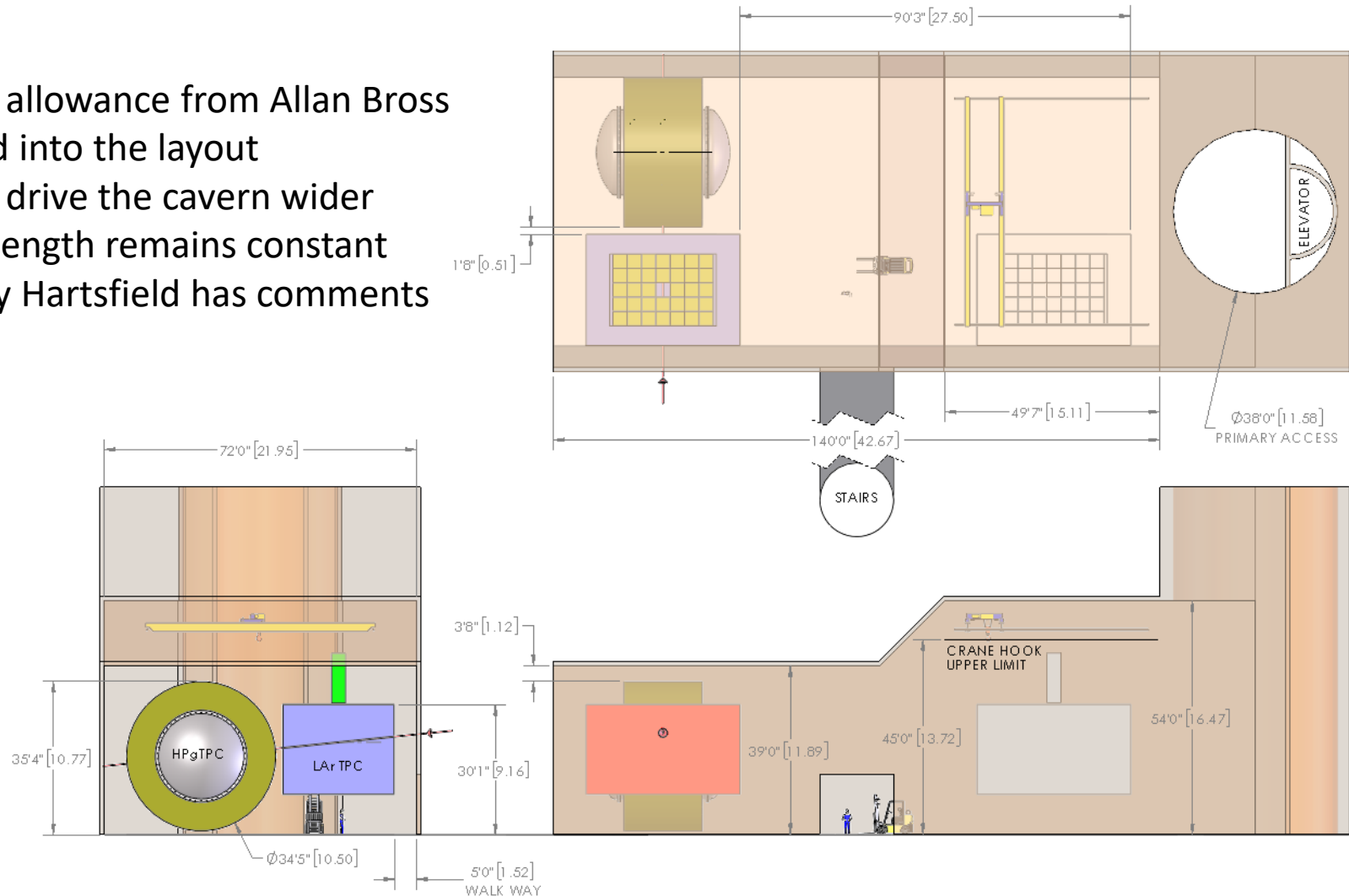
Floor space issues

- Magnet unknowns need definition



Enlarged Cavern

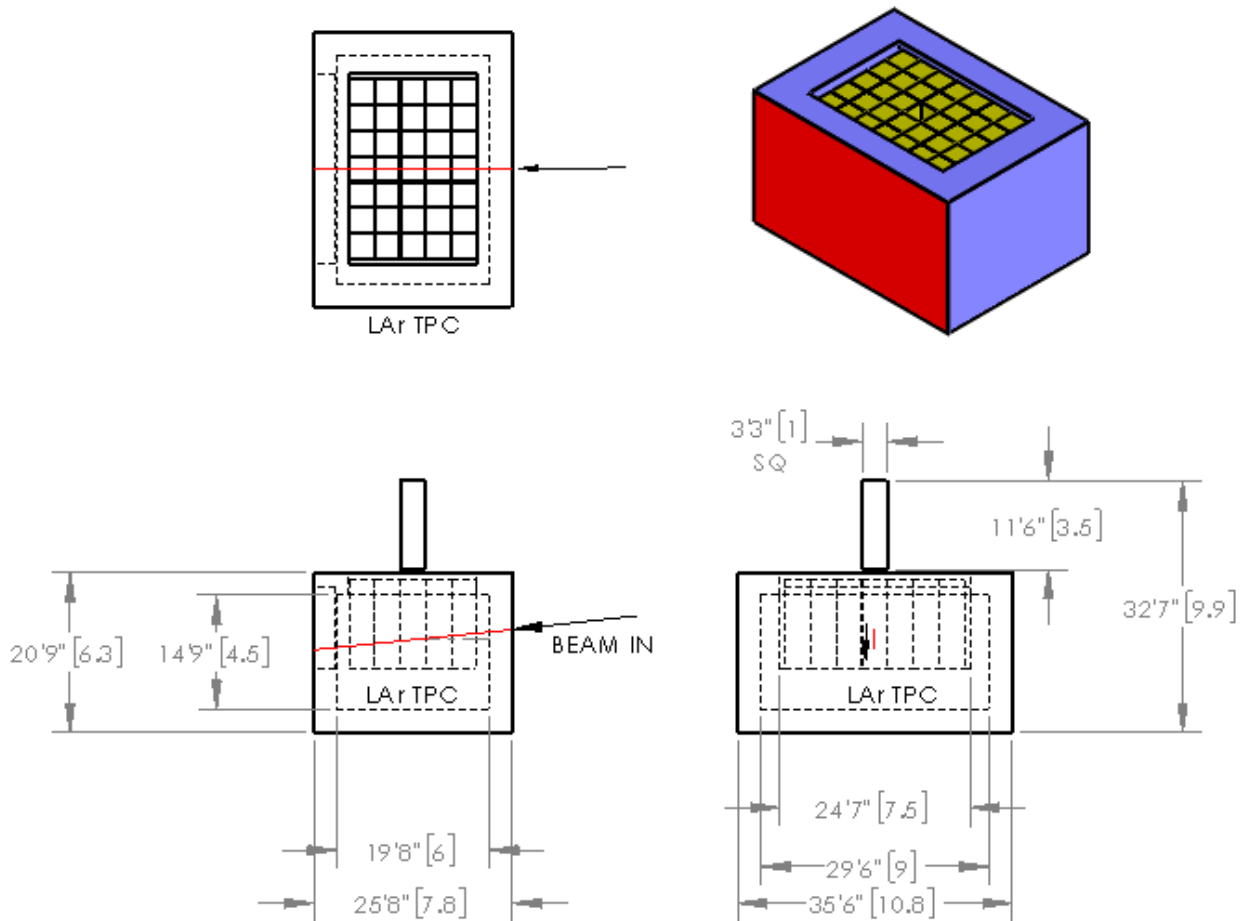
- Magnet allowance from Allan Bross included into the layout
- Magnet drive the cavern wider
- Cavern length remains constant
- Kennedy Hartsfield has comments



Supporting info

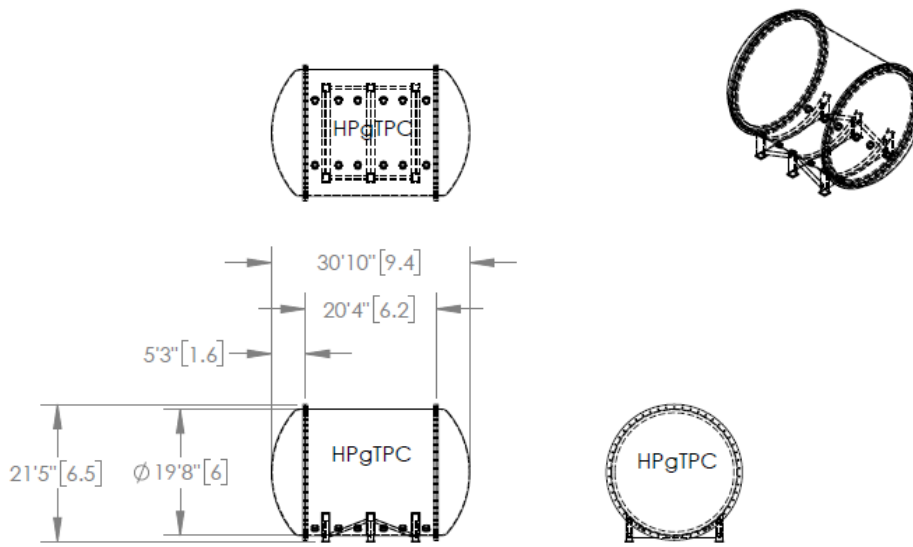


Current LAr TPC size



HPgTPC vessel

The current HPgTPC vessel



The current HPgTPC vessel with a possible Magnet

