



Introduction to the Fermilab Computing Sector (CS)

Elizabeth Sexton-Kennedy

Inaugural Meeting of the International Computing Advisory Committee

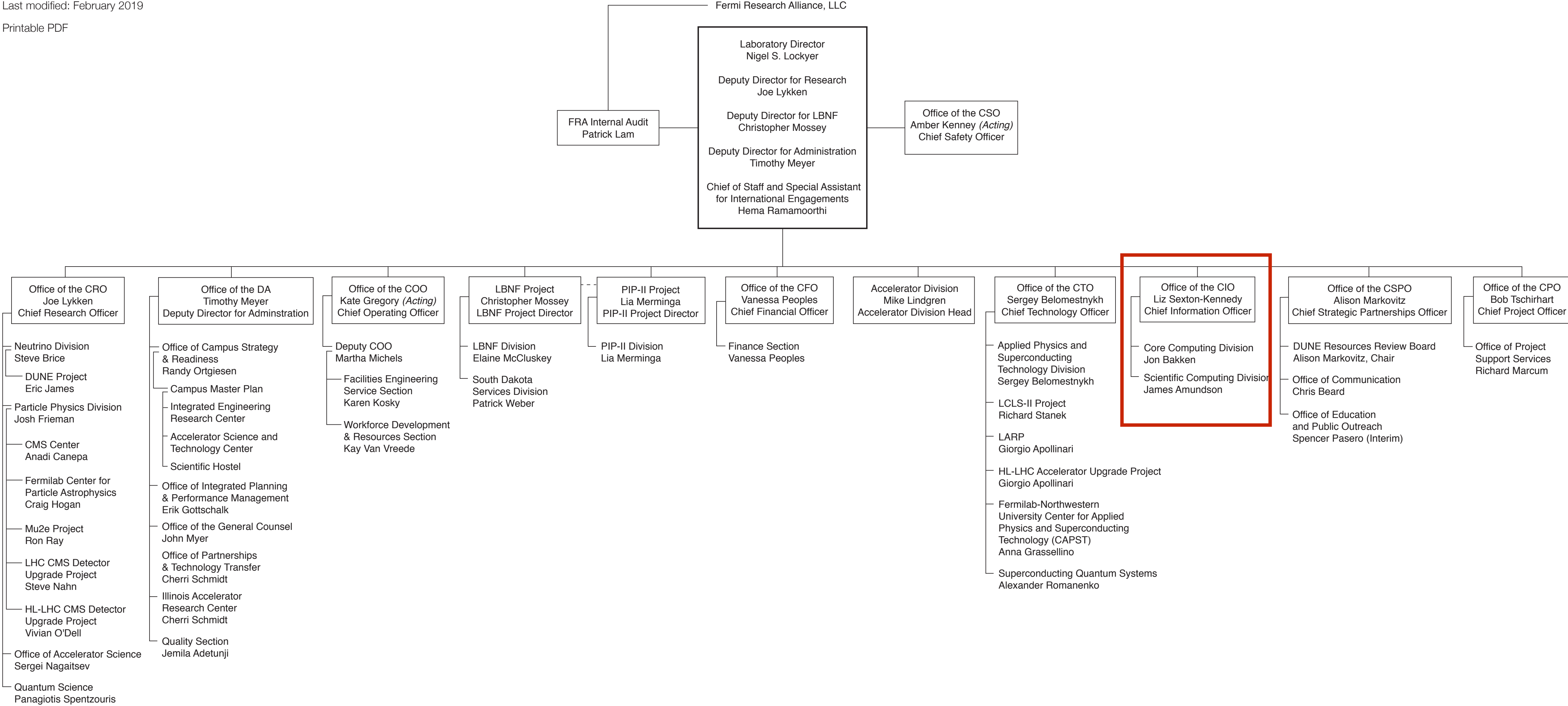
14 March 2019

Welcome and Thank You

Organizational Chart

Last modified: February 2019

Printable PDF



Fermilab Stakeholders

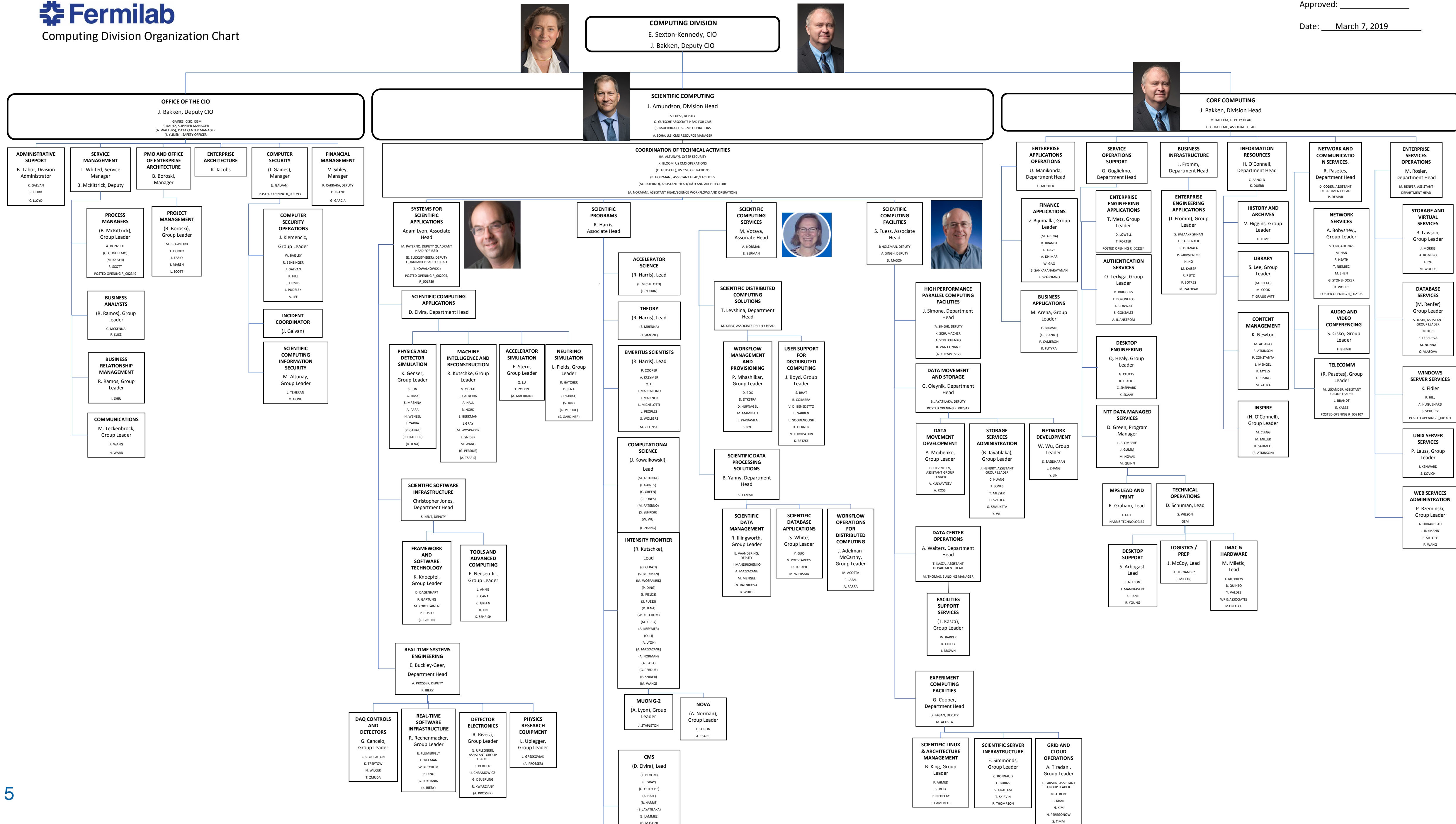
- There are many stakeholders to consider the interests of in making any decision or picking any direction/ strategy.

LAB Partners

FRA



International
Partners



Missions

- Deliver timely, innovative computing solutions and services that enable Fermilab to achieve its scientific mission, and efficiently execute the business of the laboratory...
 - Fermilab adopted the ITIL framework putting a focus on services both scientific and business. It guides us toward industry best practices
- The office of the CIO hosts those services that are common to both the business and scientific divisions.
 - Service management
 - **Computing Security**
 - Enterprise architecture
 - Project management
 - Financial Management
- Core Computing Division - IT arm of the lab
 - Enterprise Applications Ops
 - Service Ops Support
 - Business Infrastructure
 - Information Resources
 - Networking and Communication
 - Enterprise Service Ops
- Scientific Computing Division - mission computing; Jim will discuss more however the relevant quadrants are:
 - Systems for Scientific Applications
 - Scientific Computing Services
 - Scientific Computing Services

Question for the Committee

- The current organization was formed at a time when Fermilab was modernizing from paper to electronic systems.
- IT and mission are mixed in a way that is becoming uncomfortable.
- Would a different organization serve the lab better?
- We will be facing future resource constraints.