

# EARNED VALUE MANAGEMENT

AACE – Fermi Labs Workshop

May 17, 2019

# Agenda

Introductions – Rich Marcum, Fermi  
Don Giegerich, AACE

## PRESENTATIONS

- Principles & Guidelines of EVM
- EVM application on DOE Projects
- Adaptability of EVM

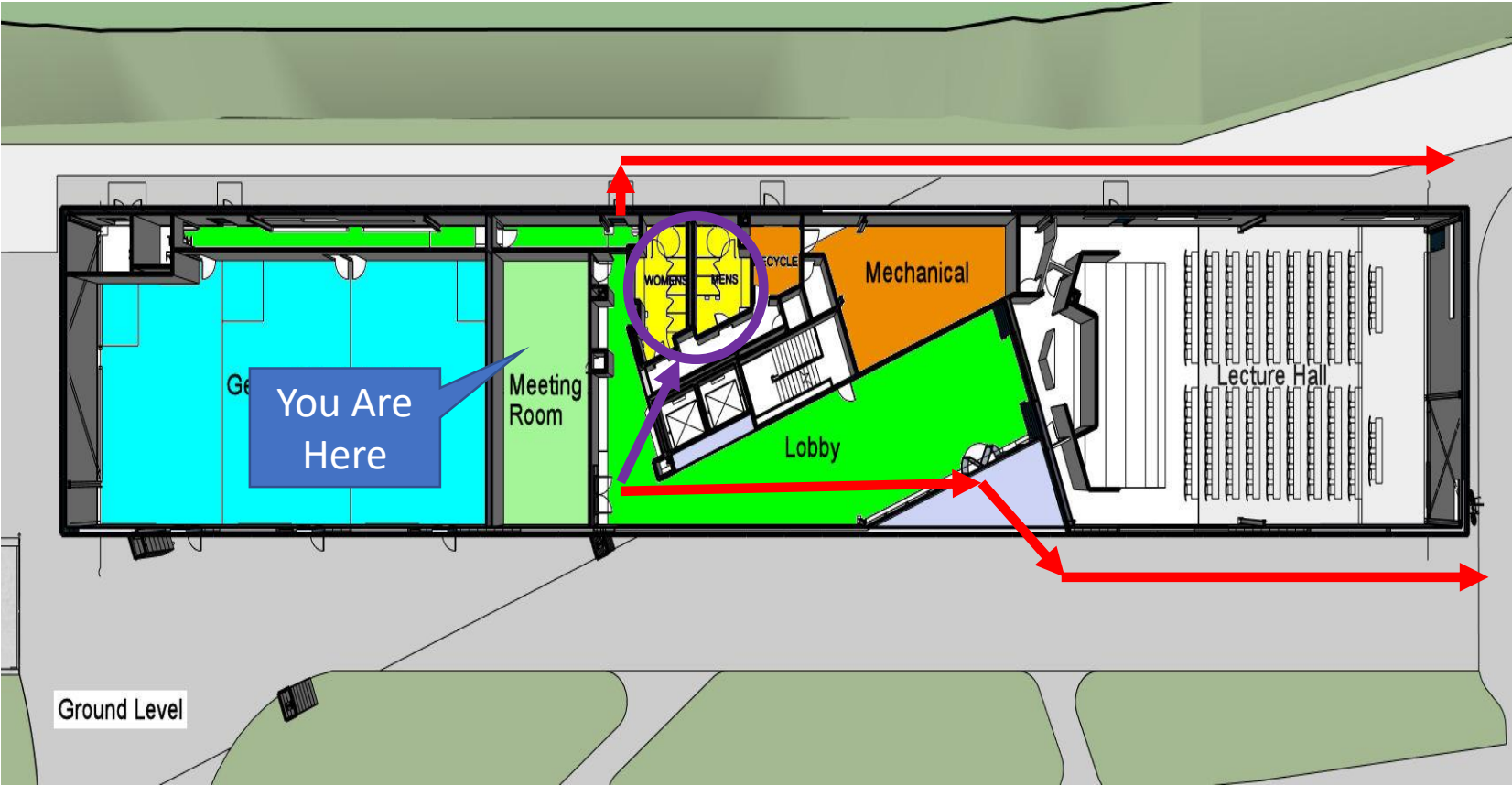
Panel Discussion

Closing – Pat Cotter, AACE

# Fire / Tornado Safety

• Tornado – Bathrooms

Fire – Parking Lot



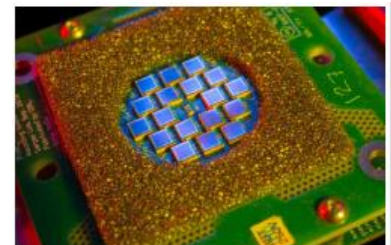
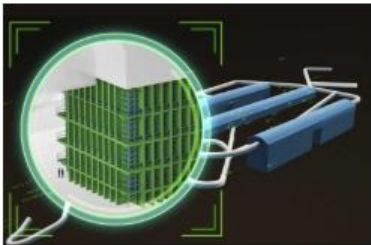
# Welcome to Fermi National Accelerator Laboratory (FNAL)

---

- Fermilab is America's premier particle physics and accelerator laboratory.
- Fermilab is the accelerator-based neutrino research capital of the world.
- Fermilab has close to 1,800 employees, comprised of scientists, engineers and support staff. Additionally, over 4,000 scientists from across the U.S. and over 50 countries use Fermilab's accelerators, detectors and computing facilities each year.
- Fermilab is continually evaluating the human, technical and financial resources we have available to meet our commitments to the U.S. strategic plan for particle physics and the physics community.

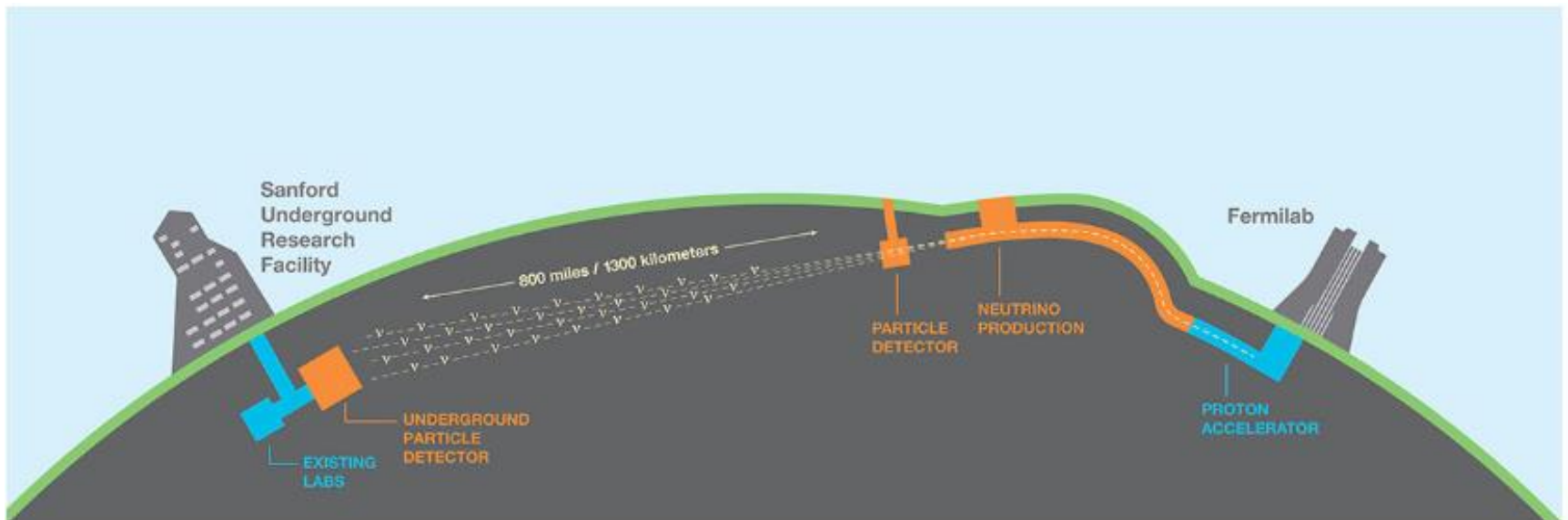
# FNAL: Current Fermilab Major Project Portfolio

- Long Base Neutrino Facility and Deep Underground Neutrino Experiment (LBNF/DUNE)
- Proton Improvement Plan (PIP-II)
- Compact Muon Solenoid (CMS) at CERN
  - US-HL-LHC CMS Detector Upgrade Project (DUP)
  - HL-LHC Accelerator Upgrade Project (AUP)
- Integrated Engineering Research Center (IERC)
- Muon to Electron conversion (Mu2e)



# FNAL: LBNF/DUNE Project

- Fermilab's flagship project is LBNF/DUNE, which will bring together scientists from around the globe to build the world's most advanced neutrino experiment, one that could change our understanding of the universe.



# FNAL: PIP-II Project

- Fermilab broke ground on PIP-II in March 2019. It will become the heart of the Fermilab accelerator complex, vastly improving what is already the most powerful high-energy particle beam for neutrino experiments. PIP-II will drive LBNF/DUNE and other research at the lab, supporting the long-term future of the U.S. high-energy physics program.

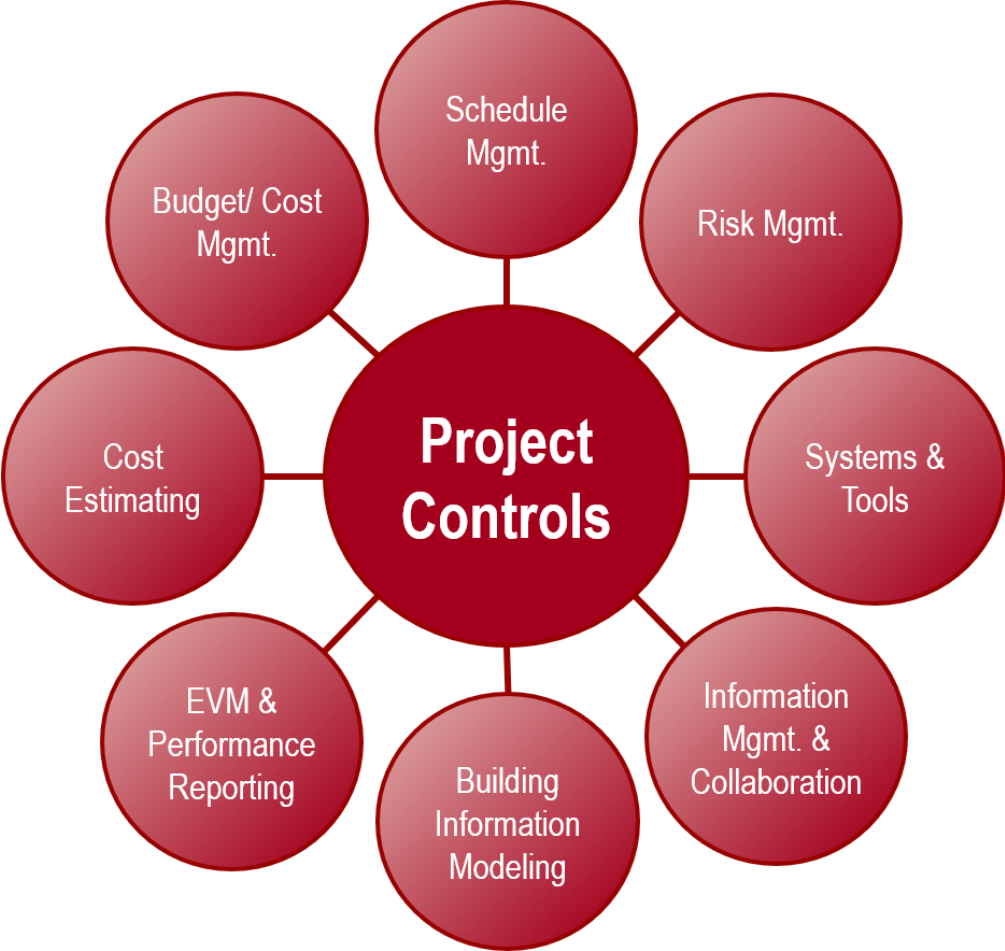


# AACE

- Project Controls Professional Association
- Chicago-Midwest Section
- Earned Value Management - Certification
- AACE local programs and activities
- Membership and participation
- Feedback encouraged



# PROJECT CONTROL ELEMENTS



# Project Control Process

