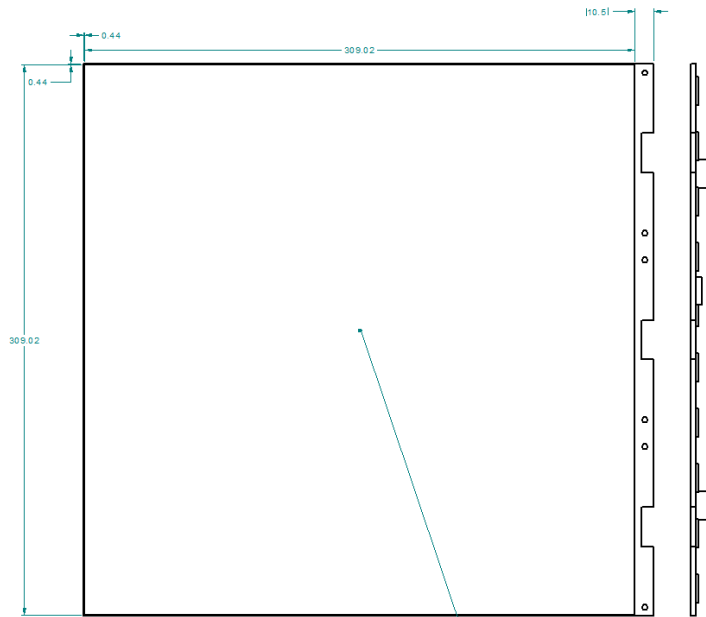
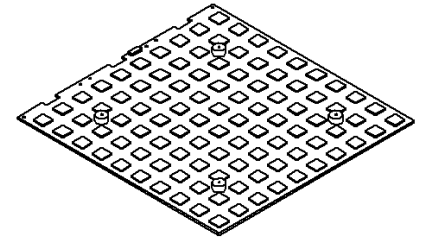


Mechanical Layout of Pixel Board

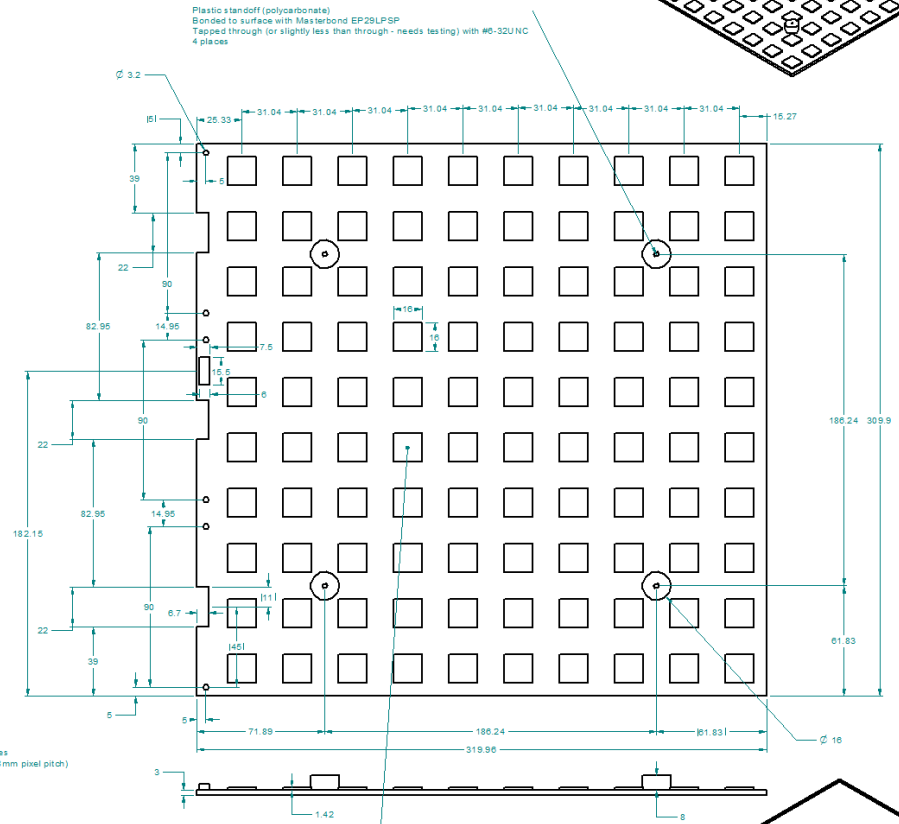
Knut Skarpaas

7/17/2019

See attached .PDF for full size drawing

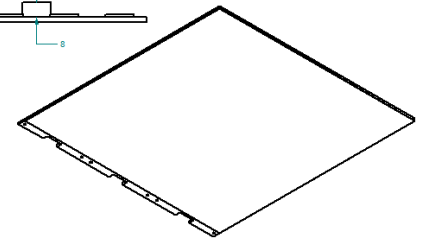


Edges of field of pixels shown here
 44mm to edge of PC board
 5mm between boards should give even field of 2.5mm squares
 8 by 8 of the 2.5mm metal pads centered on each ASIC (3.88mm pixel pitch)
 see additional drawing for more detail



Plastic standoff (polycarbonate)
 Bonded to surface with Masterbond EP20LPCP
 Tapped through (or slightly less than through - needs testing) with #6-32UNC
 4 places

Field of ASIC chips
 10 by 10 chips



DRAWN BY: JLD CHECKED BY: JLD DATE: 10/10/10 TITLE: Pixel Board Mechanical Concept PART NO: 10-10-10-10 REV: 1 DATE: 10/10/10	SCALE: 1:1 ESTIMATED MASS: CAD FILE NAME:	U.S. DEPARTMENT OF SLAC SLAC NATIONAL ACCELERATOR LABORATORY 2569 Kirt S. Krupar 10/10/10	U.S. DEPARTMENT OF ENERGY OFFICE OF SCIENCE NATIONAL SCIENTIFIC USER FACILITIES 2569 Kirt S. Krupar 10/10/10
NEXT ASSEMBLIES:	ESTIMATED MASS:	CAD FILE NAME:	Pixel Board Mechanical Concept

Detail of intersection of boards
(Pixel spacing consistent
between boards)

