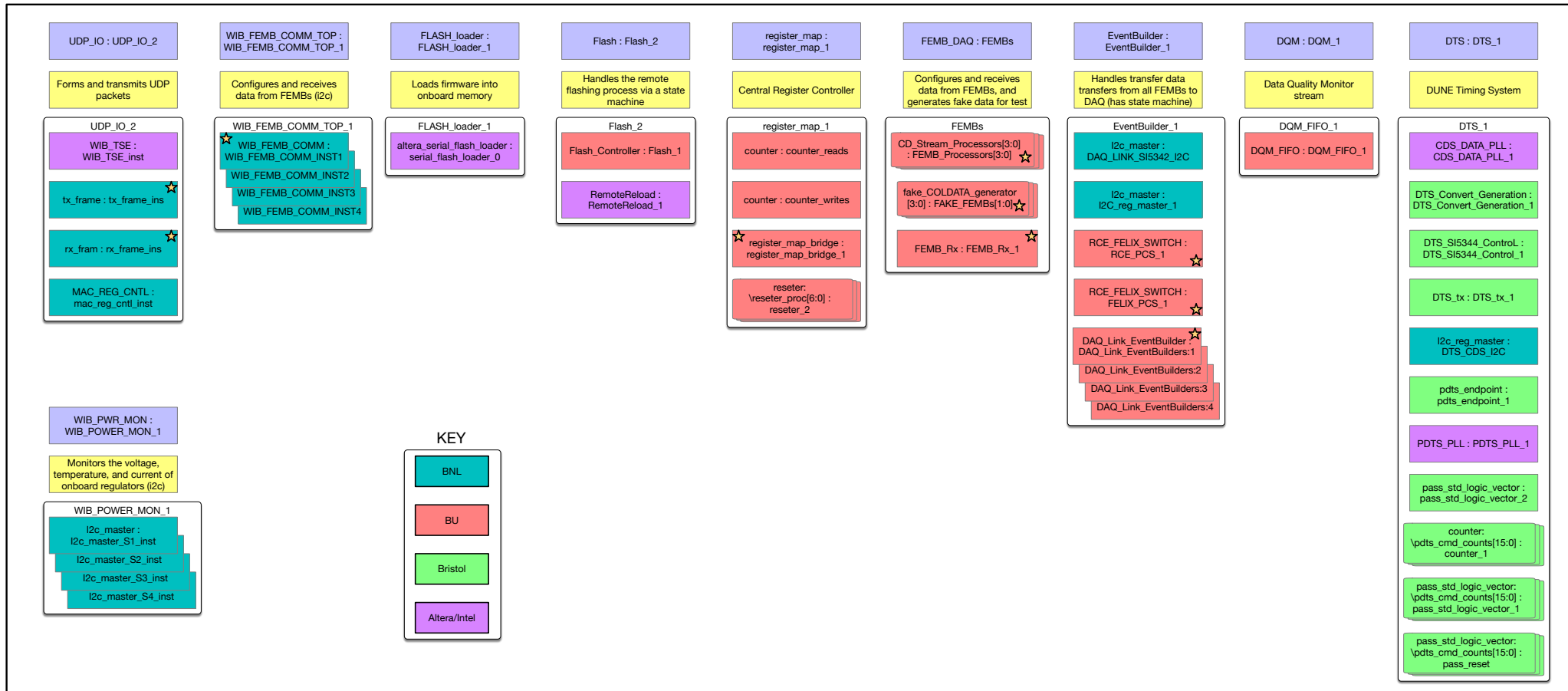


ICEBERG Firmware Effort

Goals:

- Test COLDATA functionality
- Test CRYO functionality
- Start of development of DUNE-relevant WIB firmware

WIB_TOP



Rivera's Diagram

High-Level Work Breakdown

- Porting of existing firmware from Altera to Xilinx
- Removal of legacy firmware (e.g., RCE interface, COLDATA simulator)
- Implementation of Fast Command Interface
 - **Not clear how this will be implemented end-to-end at ICEBERG**
- Update to I2C interface for COLDATA (does this change?)
- Software tools updates
- CRYO Interface
- Update to power and monitoring
- Update to control register mapping
- Timing (?)
- Firmware loading (will this still be only via JTAG?)
- Anything else?

Path Forward

- Would be nice to get volunteers to work on particular IPs
- Will need at least one (warm) test stand available---WIB available soon
- Timeline is early 2020 for COLDATA tests
- Early Spring 2020 for CRYO tests
- Will need to coordinate via git as things progress
- Updates at bi-weekly(?) WIB meetings