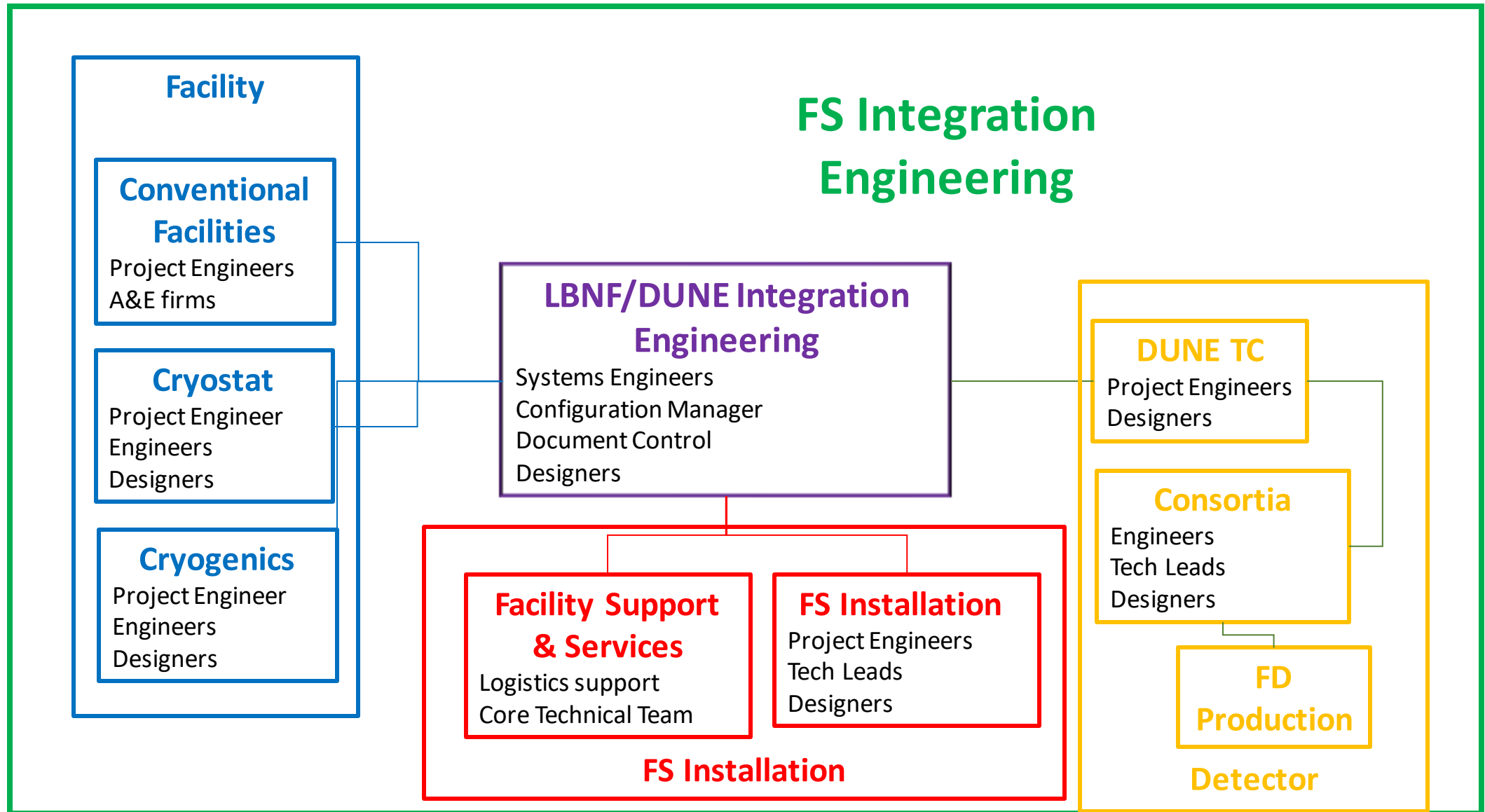


LBNF-DUNE-FS-Integration-Engineering

- Establish an ongoing forum to manage the FS integration, interfaces and planning between LBNF-DUNE-Integration
- We will create a new distribution list (next bullet) for Thursday integration meeting. (9CT, 10 ET, 1600 CERN), Does this time work or should we reschedule?
- K Zeug, J Freitag, D Mladenov, M Zhao, M Verzocchi, B Yu, V Guarino, D Warner, D Wenman, A Marchionni, B Miller, J Stewart, L Jakubec, T Shaw, D Montanari, J Fowler, S Kettell, E James, J Macier, M Nessi, P Weber, J Mateyack, D Newhart, G Lehman, A Thea
- CISC and Cal will be addressed as their systems become more advanced. How to integrate CISC and Cal will be assigned later?



Design and Interface contacts

- Design responsibilities*

- CE Mechanical Eng – M Zhao
- HV Mechanical Eng – V Guarino
- PD Eng – D Warner
- APA Mechanical Eng – D Wenman
- DAQ – G Lehman
- CISC and Cal Eng - ?
- Electrical – T Shaw
- Cryogenics – D Montanari
- Cryostat and cold boxes – D Mladenov
- Cleanroom and I&I – J Freitag

Tech Lead – M Verzocchi
Tech Lead – B Yu
Tech Lead – D Warner
Tech Lead – A Marchionni
Tech Lead – A Thea

- Interface responsibilities*

- Installation – J Freitag
- Detector Integration – K Zeug
- Electrical – T Shaw
- Cryogenics – D Montanari
- Cryostat – D Mladenov
- All others – J Fowler/D Mladenov

Tech Leads – B Miller J Stewart

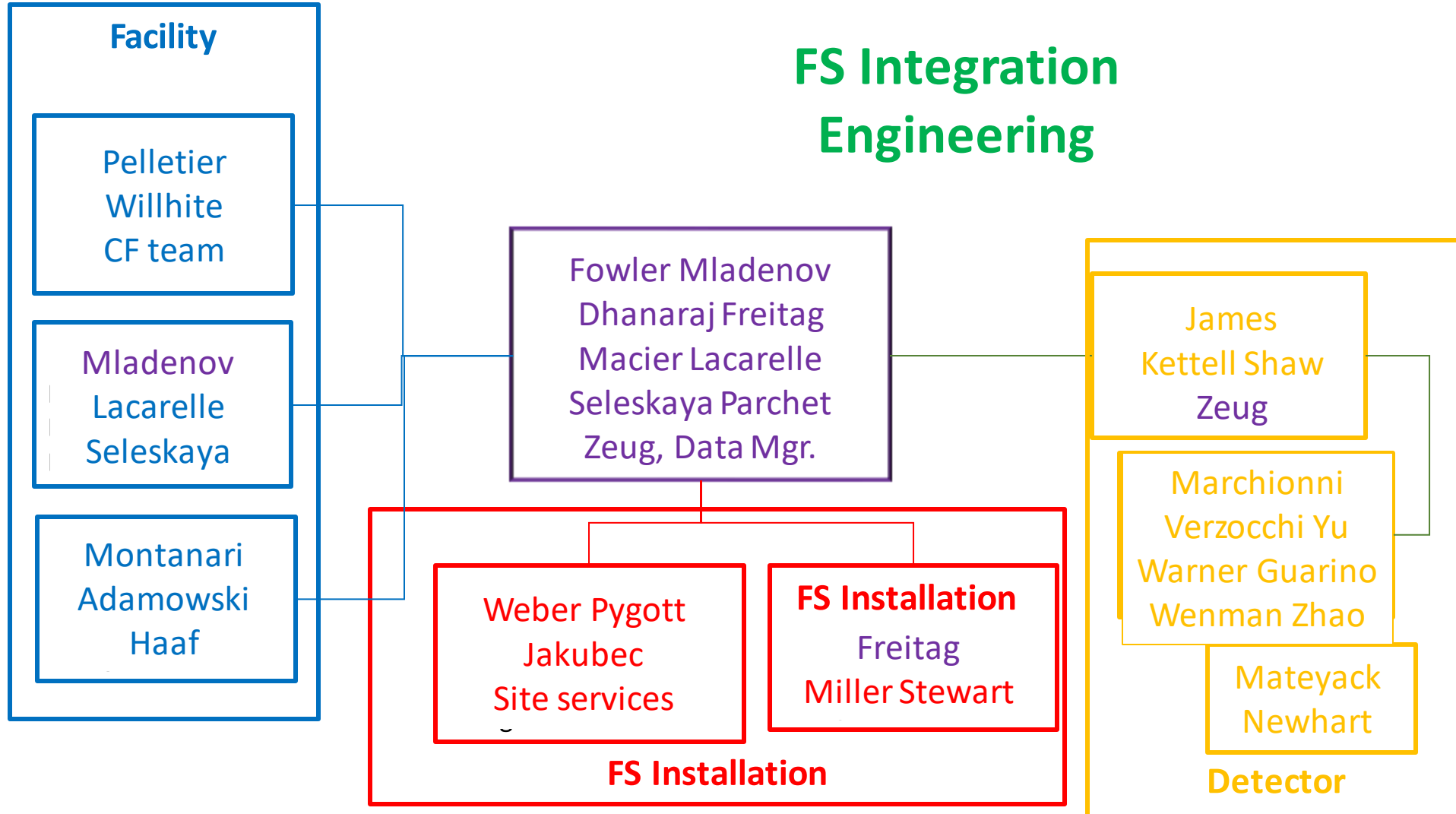
Tech Leads – B Miller J Stewart

- J Fowler/D Mladenov – Overall integration of all models

*Responsibilities:

- Each lead is expected to coordinate efforts within their team to ensure progress and quantify status
- Ensure adequate resource planning

FS Integration Engineering



Interface lead

- Interface lead engineers – detector, installation, facility infrastructure
- Responsibilities
 - oversight of all interfaces between elements within their working group
 - oversight of all interfaces between their elements and adjacent elements
 - Creation of documents or drawings to establish and control interfaces
 - Lead change efforts that may effect critical interfaces

Design lead

- Design lead
- Engineers for subsystems – CE, APA, HV, PD, DAQ, Cryogenics, Cryostat, Cold boxes, Electrical, Installation, (CISC later)
- Responsibilities
 - Oversight/monitor of all design of elements within their working group
 - Manage personnel available to accomplish designs of their elements
 - Review designs of adjacent elements that may effect their elements
 - Creation of documents or drawings for design of elements, analysis required
 - Lead design change efforts for their elements

